

5B/A150 1ST FLOOR RCP
1/4"=1'-0"

MARK	TYPE	MANUFACTURER	MODEL	DESCRIPTION	TYPE COMMENTS	URL
L1	CAN LIGHT	LITHONIA	LDN4	4" W BRUSH ALUM TRIM	-	http://tinyurl.com/5ctawayb
L1a	CAN LIGHT	LITHONIA	LDN4	4" W BRUSH ALUM - WALL WASH	-	http://tinyurl.com/5ctawayb
L2	2X2 LED FLAT PANEL	LITHONIA	CPX 2X2 320LM 80 CRI 30K SWL MIN10	-	TBD	TBD
L3	TRACK LIGHTING	JUNO LIGHTING	T620	BLACK	HEAD PER 2FT (SEE PLANS FOR LENGTH OF TRACK)	http://tinyurl.com/3wmsxhuf
L4	PENDANT	TBD	TBD	TBD	TBD	TBD
L5	PENDANT	TBD	TBD	TBD	TBD	TBD
L6	WALL SCONCE	STUFF BY ANDREW NEYER	PIPE LIGHT	BLACK	-	http://tinyurl.com/3dxuause

5B/A150 LIGHTING SCHEDULE

TYPE MARK	TYPE	WIDTH	HEIGHT	TYPE COMMENTS
DS3684	SINGLE ELIASON DOUBLE ACTION DOOR	3	7	HM FRAME W/ NO STOP (PT - 3)
DS4284	DOUBLE ELIASON DOUBLE ACTION DOOR	3.5	7	HM FRAME W/ NO STOP (PT - 3)

5A/A150 DOOR SCHEDULE - SIMPLE

LIGHTING NOTES

- ALL BULBS AS CLOSE TO 3000K (COLOR TEMP) AS POSSIBLE
- ALL BULBS TO BE LED
- EMERGENCY ILLUMINATION PER IBC 1008 (CONTRACTOR/ELECTRICIAN TO ASSURE THE FOLLOWING)
 - SEE OCCUPANCY ROOM SCHEDULE FOR THOSE SPACES THAT NEED EMERGENCY LIGHTING (ILLUMINATION) IN ADDITION, LANDINGS OUTSIDE MAJOR EXITS REQUIRE EMERGENCY LIGHTING AS WELL
 - EMERGENCY LIGHTING TO BE A MINIMUM 1 FOOT CANDLE THROUGHOUT DESIGNATED SPACES
 - THE EMERGENCY POWER SYSTEM SHALL PROVIDE POWER FOR A DURATION OF NOT LESS THAN 90 MINUTES AND SHALL CONSIST OF STORAGE BATTERIES, UNIT EQUIPMENT OR AN ON-SITE GENERATOR
 - EXIT SIGNS SHALL BE INTERNALLY OR EXTERNALLY ILLUMINATED PER IBC 1013.3
- IF THE AUTHORITY HAVING JURISDICTION (AHJ) REQUIRES IT, THE ELECTRICAL CONTRACTOR MUST SUBMIT PLANS TO DEMONSTRATE COMPLIANCE WITH EMERGENCY LIGHTING AND ENERGY CODE REQUIREMENTS. THE CONTRACTOR NEEDS TO PROVIDE THE ARCHITECT WITH COPIES OF ALL APPROVAL LETTERS

3B/A150 LIGHTING NOTES

2A/A150 W1 - FULL HEIGHT PARTITION NOT RATED - BASE
3"=1'-0"



Owner: Forage Kitchen
5352 King James Way
Fitchburg, WI 53719
eatforage.com

GC: Venture Construction Group
17500 W. Liberty Lane
New Berlin, WI 53146
vcginc.com

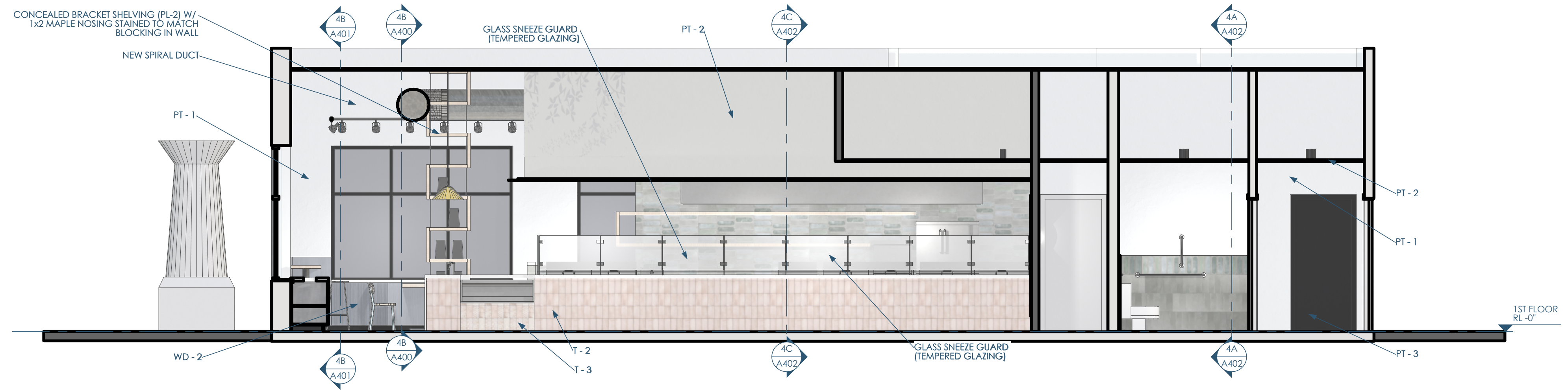
Architect: OpeningDesign
17 S Fairchild | FL 7
Madison, WI 53703
ryan@openingdesign.com | 773.425.6456

REFLECTED CEILING PLAN 04/26/2024

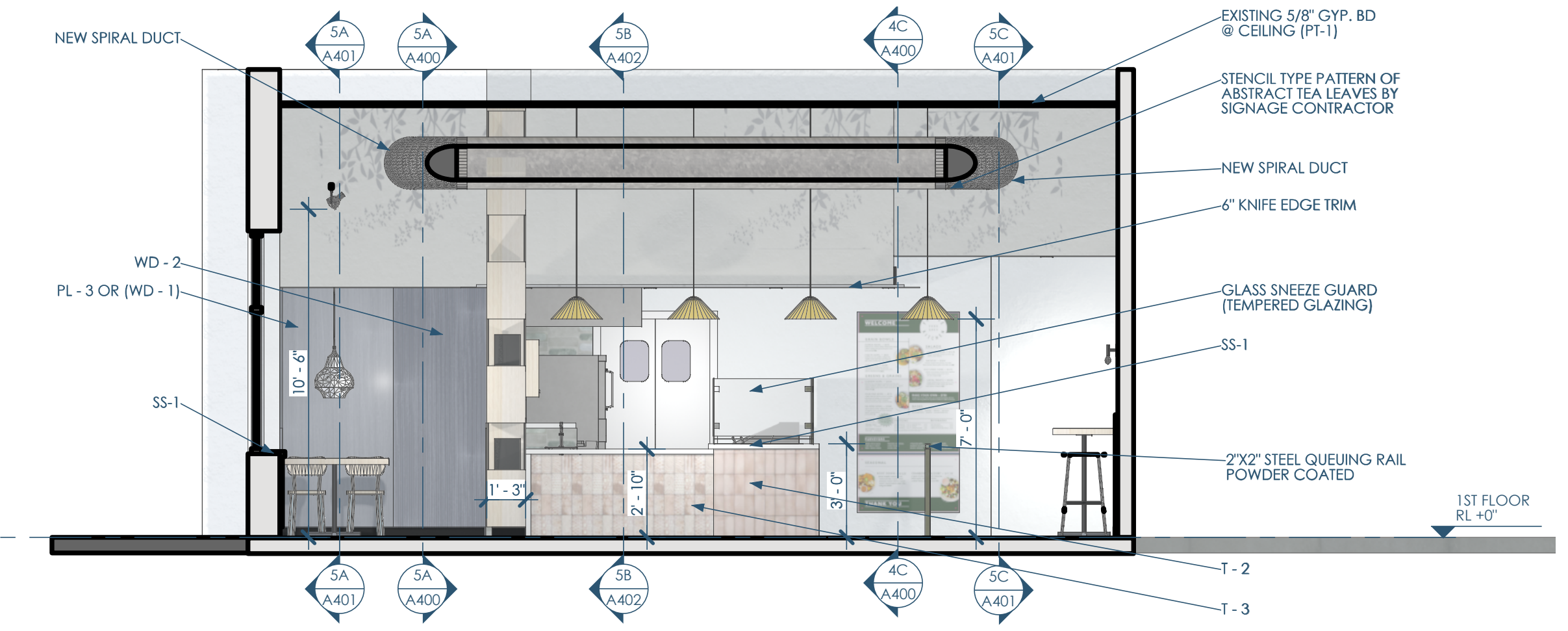
FK - PEWAUKEE
1390 CAPITAL DR - PEWAUKEE, WI 53072

A150

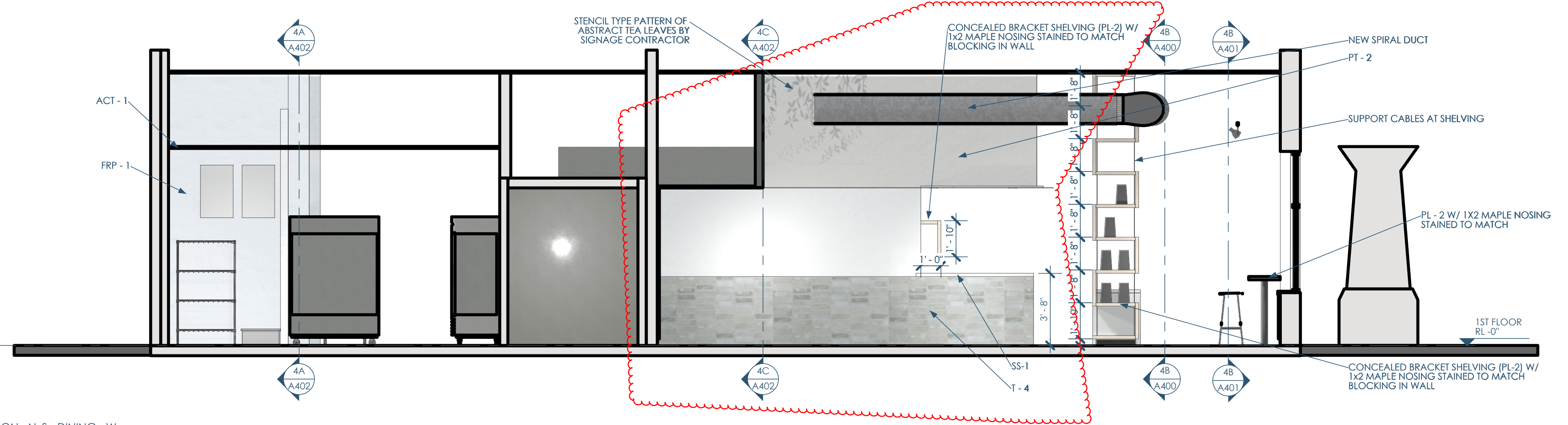
This project, like most OpeningDesign's projects, is open source (Attribution-ShareAlike 4.0 International) - freely available to any party for future use, assuming the terms such as Attribution and ShareAlike are honored.



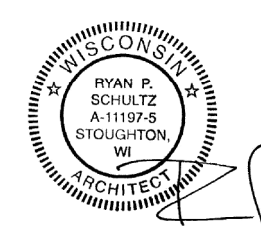
4C/A400 SECTION - N_S - LINE - E
1/4"=1'-0"



4B/A400 SECTION - E_W - POS - S
1/4"=1'-0"



5A/A400 SECTION - N_S - DINING - W
1/4"=1'-0"



Owner: Forage Kitchen
5352 King James Way
Fitchburg, WI 53719
eatforage.com

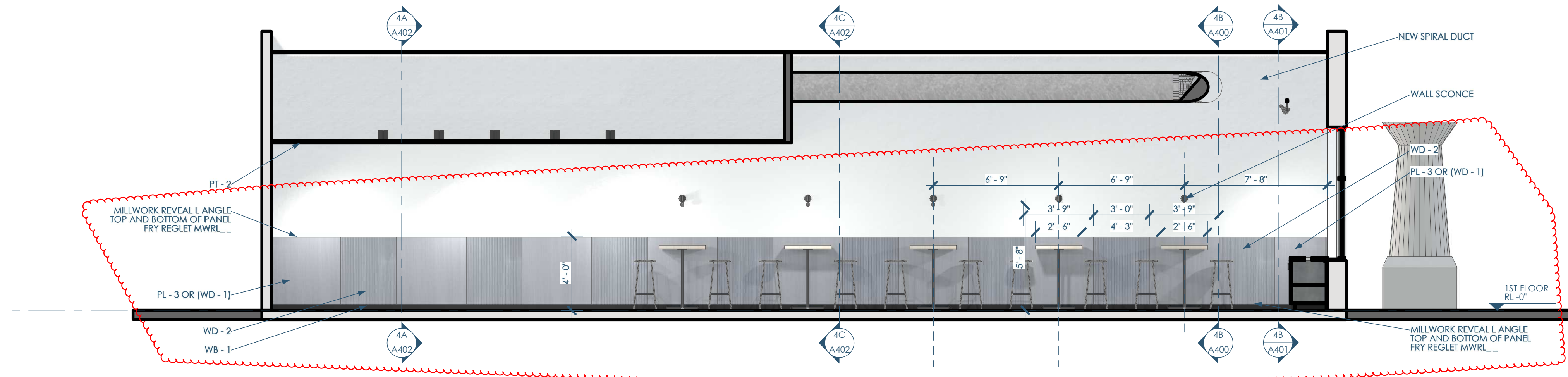
GC: Venture Construction Group
17500 W. Liberty Lane
New Berlin, WI 53146
vcginc.com

Architect: OpeningDesign
17 S Fairchild | FL 7
Madison, WI 53703
ryan@openingdesign.com | 773.425.6456

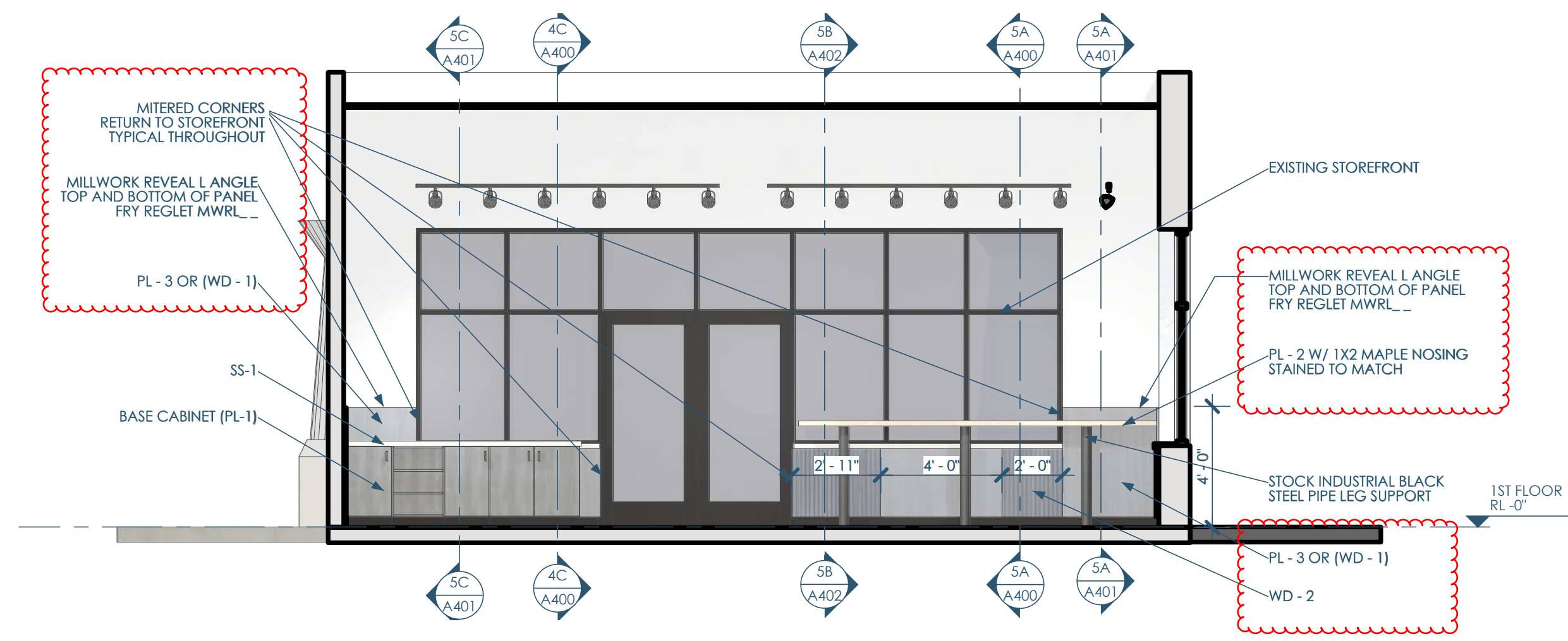
INTERIOR ELEVATIONS 04/26/2024
FK - PEWAUKEE
1390 CAPITAL DR - PEWAUKEE, WI 53072

A400

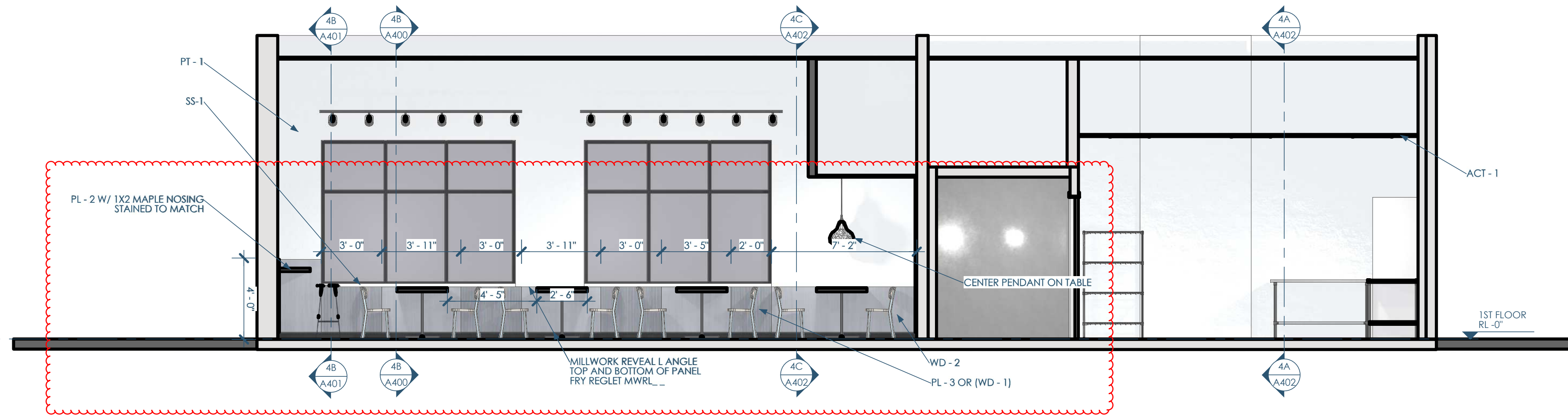
This project, like most OpeningDesign's projects, is open source. (Attribution-ShareAlike 4.0 International=CC-BY-SA 4.0)=freely available to any party for future use, assuming the terms such as Attribution and ShareAlike are honored.



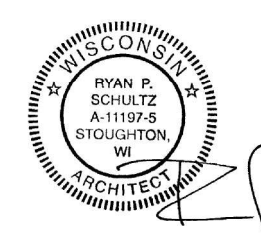
5C/A401 SECTION - N,S - LINE_WALL - W
1/4"=1'-0"



4B/A401 SECTION - E,W - POS - N
1/4"=1'-0"



5A/A401 SECTION - N,S - DINING - E
1/4"=1'-0"



Owner: Forage Kitchen
5352 King James Way
Fitchburg, WI 53719
eatforage.com

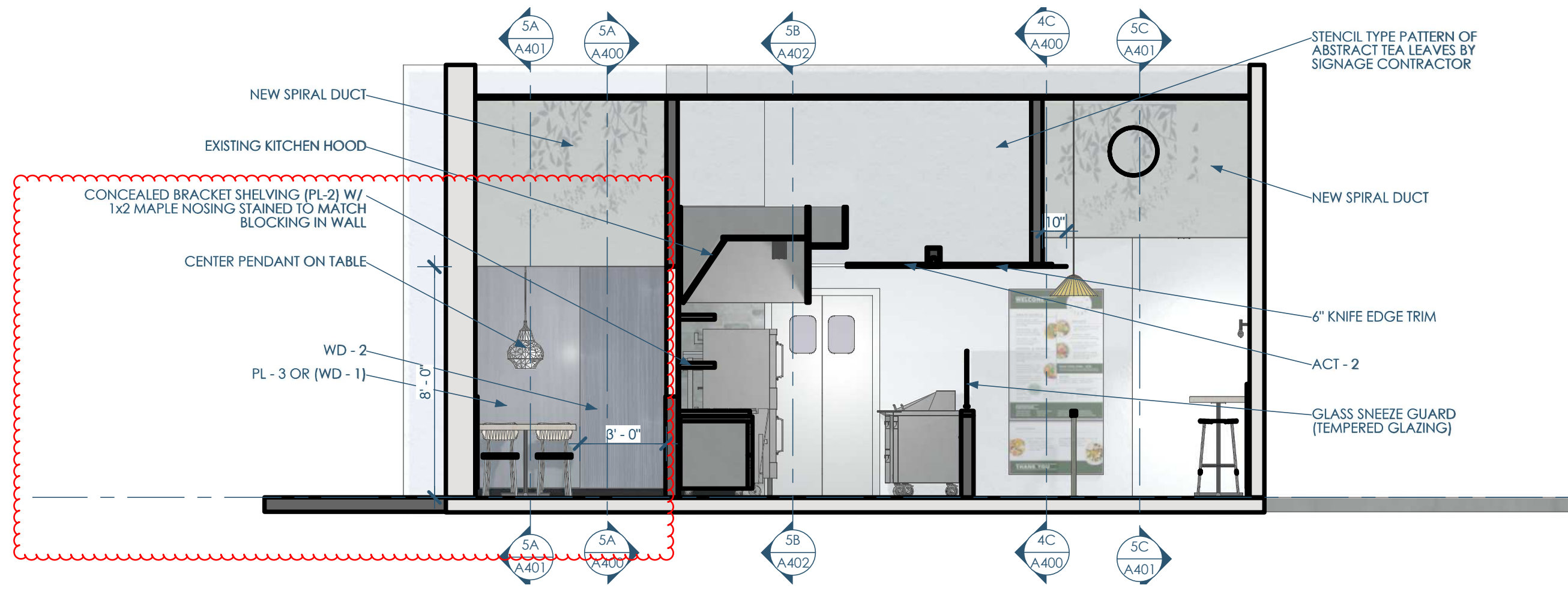
GC: Venture Construction Group
17500 W. Liberty Lane
New Berlin, WI 53146
vcginc.com

Architect: OpeningDesign
17 S Fairchild | FL 7
Madison, WI 53703
ryan@openingdesign.com | 773.425.6456

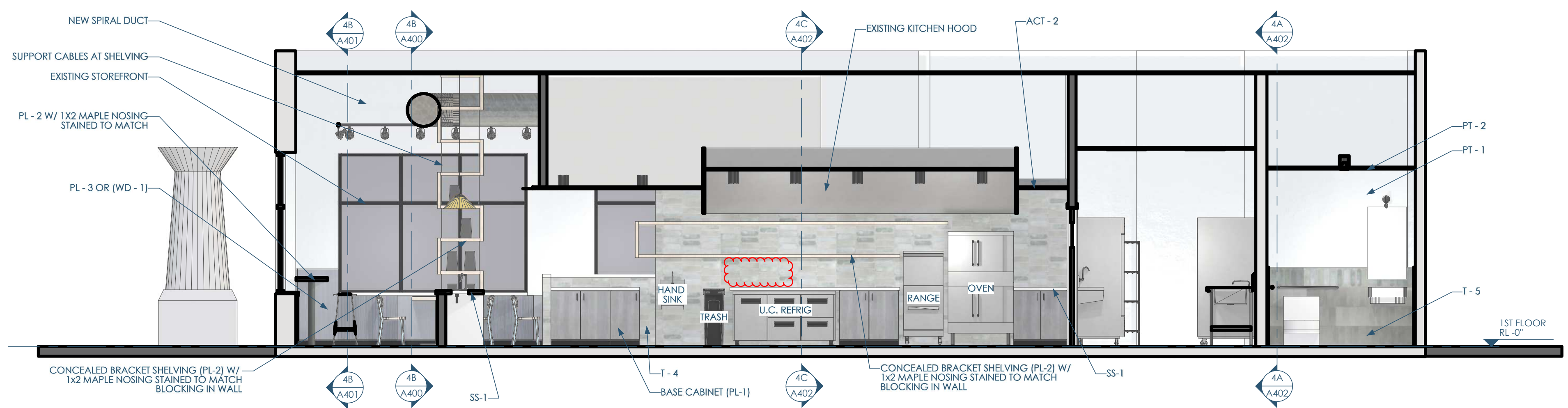
INTERIOR ELEVATIONS 04/26/2024
FK - PEWAUKEE
1390 CAPITAL DR - PEWAUKEE, WI 53072

A401

This project, like most OpeningDesign's projects, is open source. (Attribution-ShareAlike 4.0 International=CC-BY-SA 4.0)=freely available to any party for future use, assuming the terms such as Attribution and ShareAlike are honored.



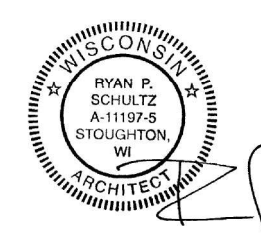
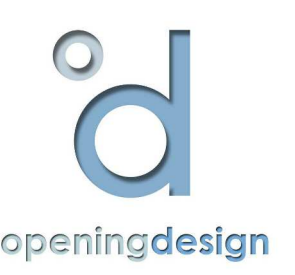
4C/A402 SECTION - E_W - HOOD - S
1/4"=1'-0"



5B/A402 SECTION - N_S - EMP - E
1/4"=1'-0"



4A/A402 SECTION - E_W - REST - N
1/4"=1'-0"



Owner: Forage Kitchen
5352 King James Way
Fitchburg, WI 53719
eatforage.com

GC: Venture Construction Group
17500 W. Liberty Lane
New Berlin, WI 53146
vcginc.com

Architect: OpeningDesign
17 S Fairchild | FL 7
Madison, WI 53703
ryan@openingdesign.com | 773.425.6456

INTERIOR ELEVATIONS 04/26/2024
FK - PEWAUKEE
1390 CAPITAL DR - PEWAUKEE, WI 53072

A402

This project, like most OpeningDesign's projects, is open source (Attribution-ShareAlike 4.0 International=CC-BY-SA 4.0)=freely available to any party for future use, assuming the terms such as Attribution and ShareAlike are honored.