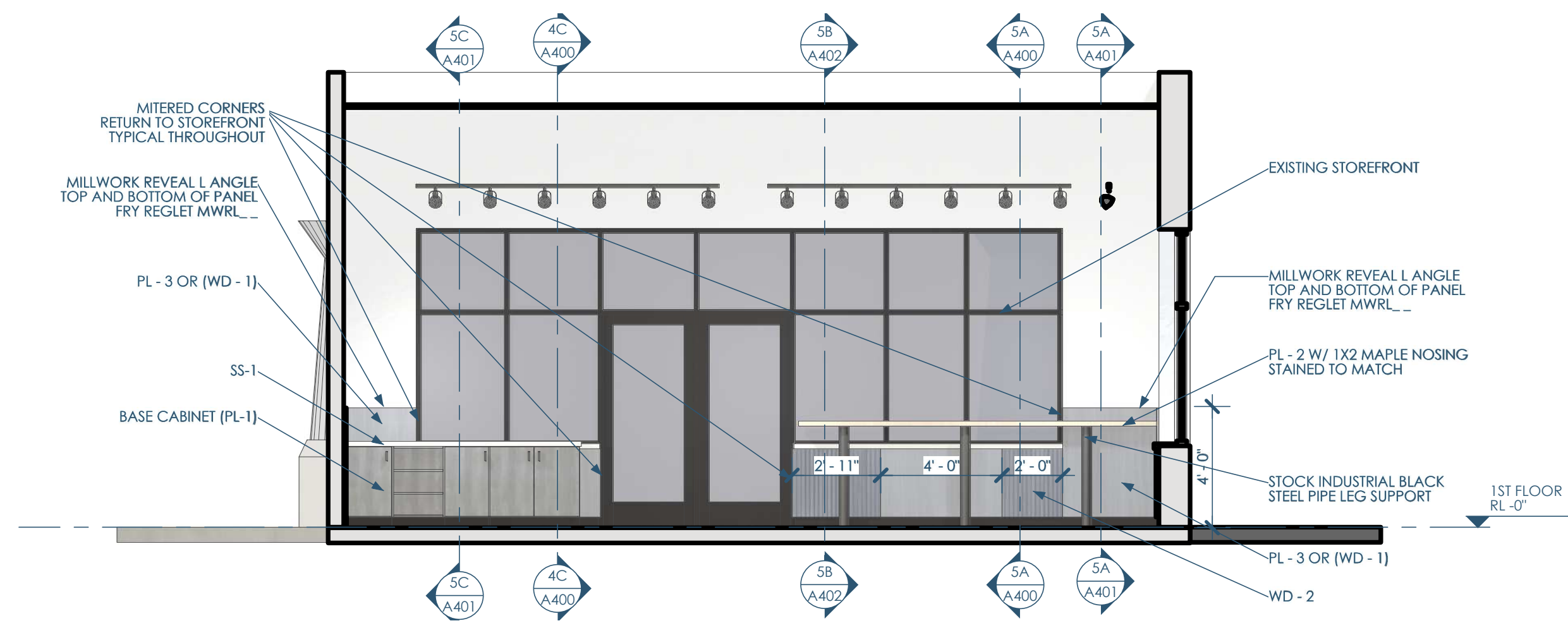
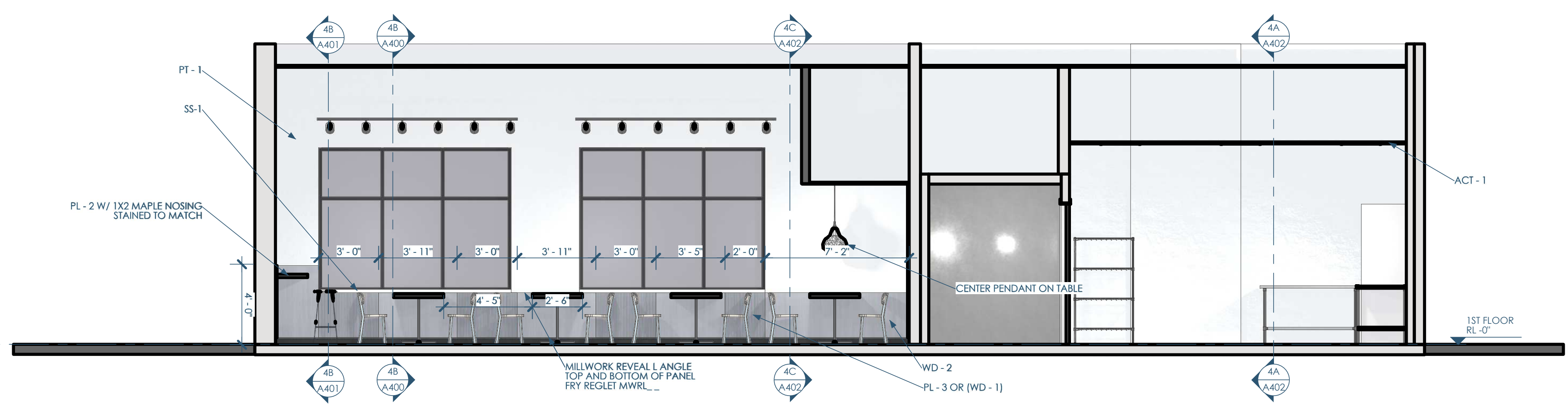


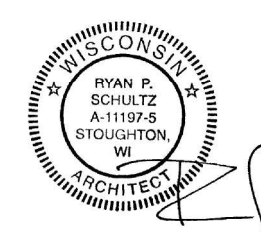
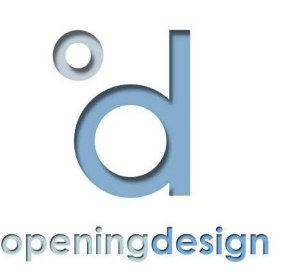
5C/A401 SECTION - N,S - LINE_WALL - W
1/4"=1'-0"



4B/A401 SECTION - E,W - POS - N
1/4"=1'-0"



5A/A401 SECTION - N,S - DINING - E
1/4"=1'-0"



Owner: Forage Kitchen
5352 King James Way
Fitchburg, WI 53719
eafforage.com

GC: Venture Construction Group
17500 W. Liberty Lane
New Berlin, WI 53146
vcginc.com

Architect: OpeningDesign
17 S Fairchild | FL 7
Madison, WI 53703
ryan@openingdesign.com | 773.425.6456

INTERIOR ELEVATIONS 04/26/2024
FK - PEWAUKEE
1390 CAPITAL DR - PEWAUKEE, WI 53072

A401

This project, like most OpeningDesign's projects, is open source. (Attribution-ShareAlike 4.0 International=CC-BY-SA 4.0)=freely available to any party for future use, assuming the terms such as Attribution and ShareAlike are honored.