

5B/A101 FLOOR PLAN - 1ST FLOOR
3/8"=1'-0"

TYPE MARK	CATEGORY	MANUFACTURER	PRODUCT	COLOR
ACT - 1	ACOUSTICAL TILE	ARMSTRONG	KITCHEN ZONE	TILE: WHITE, GRID: WHITE
ACT - 2	ACOUSTICAL TILE	ARMSTRONG	SUPRAFINE XL 9/16" GRID	TILE: WHITE, GRID: SILVER SATIN
CON - 1	CONCRETE	-	EXISTING	-
FRP - 1	FIBRE-REINFORCED PLASTIC	TBD	EXISTING	MATCH EXISTING
FRP - 2	FIBRE-REINFORCED PLASTIC	TBD	-	WHITE
PL - 1	PLASTIC LAMINATE	TBD	TBD	TBD (WOOD GRAIN)
PL - 2	PLASTIC LAMINATE	TBD	TBD	TBD (NATUP)
PT - 1	PAINT	TBD	TBD	TBD
PT - 2	PAINT	TBD	TBD	TBD
PT - 3	PAINT	TBD	TBD	ACCENT COLOR
SS-1	SOLID SURFACE	TBD	TBD	-
T - 1	TILE	EXISTING	EXISTING	EXISTING KITCHEN FLOOR TILE - PATCH AS NECESSARY
T - 2	TILE	IRIS CERAMICA	BE IN	-
T - 3	TILE	IRIS CERAMICA	BE IN	-
T - 4	TILE	IRIS CERAMICA	BI *	-
T - 5	TILE	IRIS CERAMICA	-	ACCENT: DECOR AVIO
WB - 1	RESILIENT FLOORING	JOHNSONITF	-	-
WD - 1	WOOD	-	-	CLEAR POLYURETHANE

5A/A101 FINISH KEY

updated finish key here:
<https://tinyurl.com/nhk4c33y>

NUMBER	NAME	AREA	FLOORING	WALLS	CEILING	WALL BASE	COMMENTS
100	WALK-IN COOLER	51	T - 1	EXISTING	EXISTING	EXISTING	-
101	DINING ROOM - EAST	298	CON - 1	WAINSCOTT: P-1 KNEEWALL: T-4 (SEE ELEVATIONS)	P-1	WB - 1	-
102	CORRIDOR - FRONT	182	CON - 1	WAINSCOTT: P-1 KNEEWALL: T-2 AND T-3 (SEE ELEVATIONS)	P-1 (GYP. BD)	WB - 1	-
103	FRONT OF HOUSE	340	LVS - 1	KNEEWALL: FRP - 1, EAST: T - 4	ACT - 2	WB - 1	-
104	DINING ROOM - WEST	185	CON - 1	WAINSCOTT: P-1, WALLS: PT - 1 (SEE ELEVATIONS)	P-1 (GYP. BD)	WB - 1	-
105	PREP AREA	237	T - 1	FRP - 1	ACT - 1	T - 1	-
106	RESTROOM - MENS	50	T - 6	WAINSCOTT: T - 5, WALLS: PT - 1	P-2 (GYP. BD)	WB - 1	-
107	RESTROOM - WOMENS	51	T - 6	WAINSCOTT: T - 5, WALLS: PT - 1	P-2 (GYP. BD)	WB - 1	-
108	CORRIDOR - BACK	127	CON - 1	WAINSCOTT: P-1, WALLS: PT - 1 (SEE ELEVATIONS)	P-2 (GYP. BD)	WB - 1	-

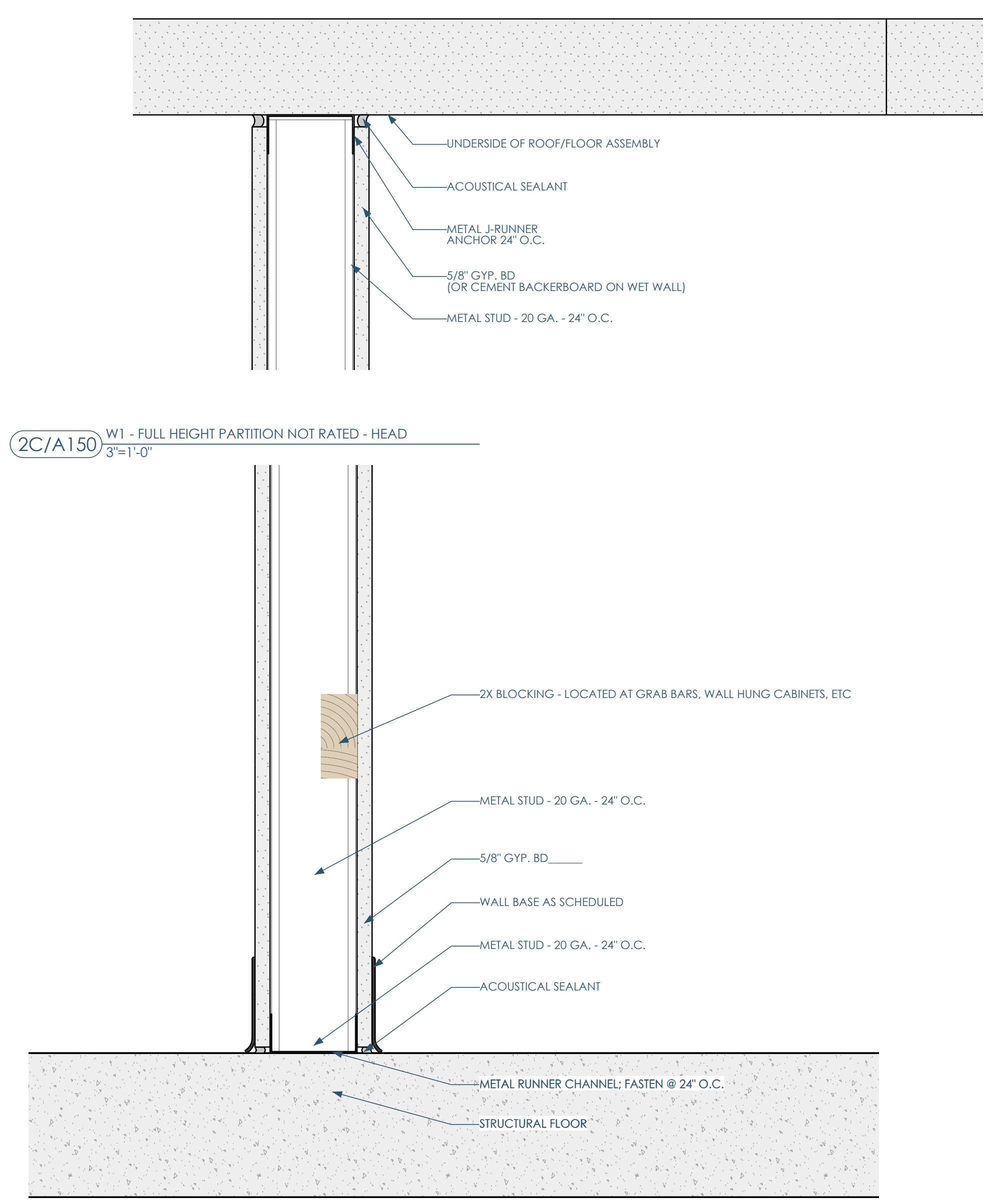
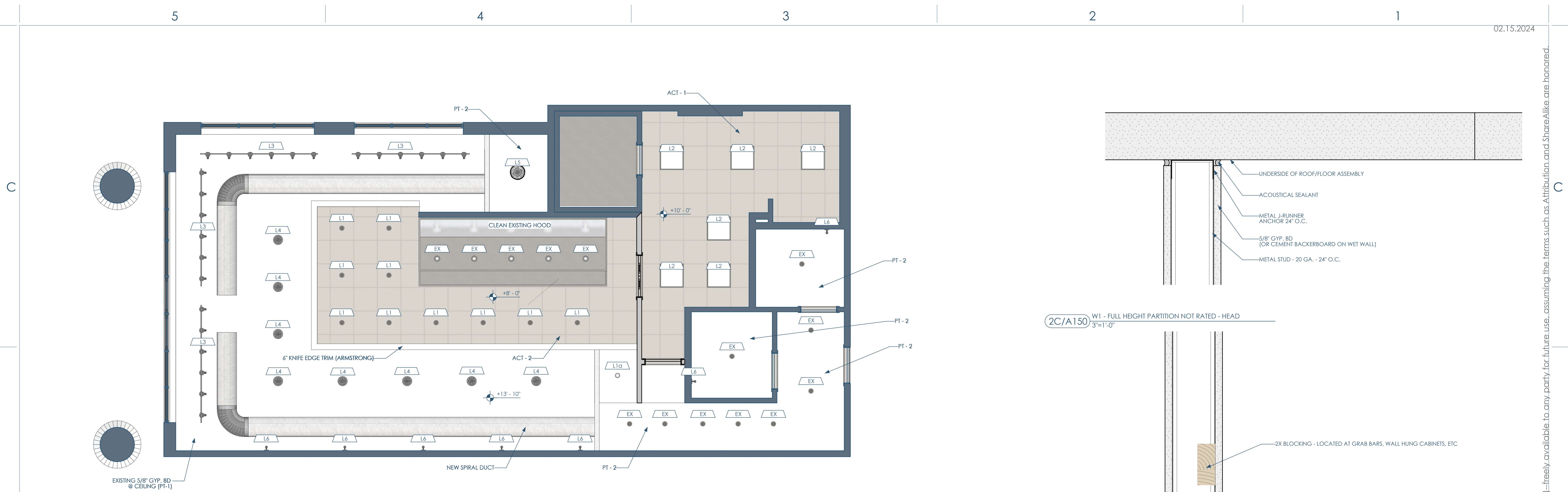
2A/A101 ROOM FINISH SCHEDULE

NUMBER	NAME	AREA	FUNCTION OF SPACE	AREA PER OCCUPANT	OCCUPANTS	EMERGENCY LIGHTING
100	WALK-IN COOLER	51	MECH. EQUIP / STORAGE	300	1	-
101	DINING ROOM - WEST	298	ASSEMBLY - UNCONCENTRATED	15	23	Y
102	CORRIDOR - FRONT	182	CIRCULATION	0	0	-
103	FRONT OF HOUSE	340	KITCHEN, COMMERCIAL	200	2	-
104	DINING ROOM - EAST	185	ASSEMBLY - UNCONCENTRATED	15	13	Y
105	PREP AREA	237	KITCHEN, COMMERCIAL	200	2	-
106	RESTROOM - MENS	50	CIRCULATION	0	0	-
107	RESTROOM - WOMENS	51	CIRCULATION	0	0	-
108	CORRIDOR - BACK	127	CIRCULATION	0	0	Y
	Sum:	1520			Sum: 410	

2AA/A101 ROOM SCHEDULE - OCCUPANCY



This project, like most Opening Design's projects, is open source. (Attribution-ShareAlike 4.0 International=CC BY-SA 4.0)=freely available to any party for future use, assuming the terms such as Attribution and ShareAlike are honored.



5B/A150 1ST FLOOR RCP
1/4"=1'-0"

MARK	TYPE	MANUFACTURER	MODEL	DESCRIPTION	TYPE COMMENTS	URL
L1	CAN LIGHT	LITHONIA	LDN4	4" W BRUSH ALUM TRIM	-	http://tinyurl.com/5ctawayb
L1a	CAN LIGHT	LITHONIA	LDN4	4" W BRUSH ALUM - WALL WASH	-	http://tinyurl.com/5ctawayb
L2	2X2 LED FLAT PANEL	LITHONIA	CPX 2X2 3200LM 80 CRI 30K SWL MIN10	-	TBD	TBD
L3	TRACK LIGHTING	JUNO LIGHTING	T620	BLACK	HEAD PER 2FT (SEE PLANS FOR LENGTH OF TRACK)	http://tinyurl.com/3wmsxhuf
L4	PENDANT	TBD	TBD	TBD	TBD	TBD
L5	PENDANT	TBD	TBD	TBD	TBD	TBD
L6	WALL SCONCE	STUFF BY ANDREW NEYER	PIPE LIGHT	BLACK	-	http://tinyurl.com/3dxuause

5B/A150 LIGHTING SCHEDULE

TYPE MARK	TYPE	WIDTH	HEIGHT	TYPE COMMENTS
DS3684	SINGLE ELIASON DOUBLE ACTION DOOR	3	7	HM FRAME W/ NO STOP (PT - 3)
DSD4284	DOUBLE ELIASON DOUBLE ACTION DOOR	3.5	7	HM FRAME W/ NO STOP (PT - 3)

5A/A150 DOOR SCHEDULE - SIMPLE

LIGHTING NOTES

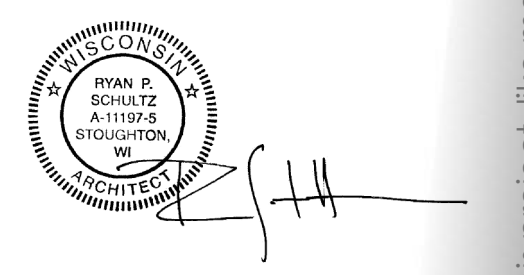
- ALL BULBS AS CLOSE TO 3000K (COLOR TEMP) AS POSSIBLE
- ALL BULBS TO BE LED
- EMERGENCY ILLUMINATION PER IBC 1008 (CONTRACTOR/ELECTRICIAN TO ASSURE THE FOLLOWING)
 - SEE OCCUPANCY ROOM SCHEDULE FOR THOSE SPACES THAT NEED EMERGENCY LIGHTING (ILLUMINATION) IN ADDITION, LANDINGS OUTSIDE MAJOR EXITS REQUIRE EMERGENCY LIGHTING AS WELL
 - EMERGENCY LIGHTING TO BE A MINIMUM 1 FOOT CANDLE THROUGHOUT DESIGNATED SPACES
 - THE EMERGENCY POWER SYSTEM SHALL PROVIDE POWER FOR A DURATION OF NOT LESS THAN 90 MINUTES AND SHALL CONSIST OF STORAGE BATTERIES, UNIT EQUIPMENT OR AN ON-SITE GENERATOR
 - EXIT SIGNS SHALL BE INTERNALLY OR EXTERNALLY ILLUMINATED PER IBC 1013.3
- IF THE AUTHORITY HAVING JURISDICTION (AHJ) REQUIRES IT, THE ELECTRICAL CONTRACTOR MUST SUBMIT PLANS TO DEMONSTRATE COMPLIANCE WITH EMERGENCY LIGHTING AND ENERGY CODE REQUIREMENTS. THE CONTRACTOR NEEDS TO PROVIDE THE ARCHITECT WITH COPIES OF ALL APPROVAL LETTERS

3B/A150 LIGHTING NOTES

2A/A150 W1 - FULL HEIGHT PARTITION NOT RATED - BASE
3"=1'-0"



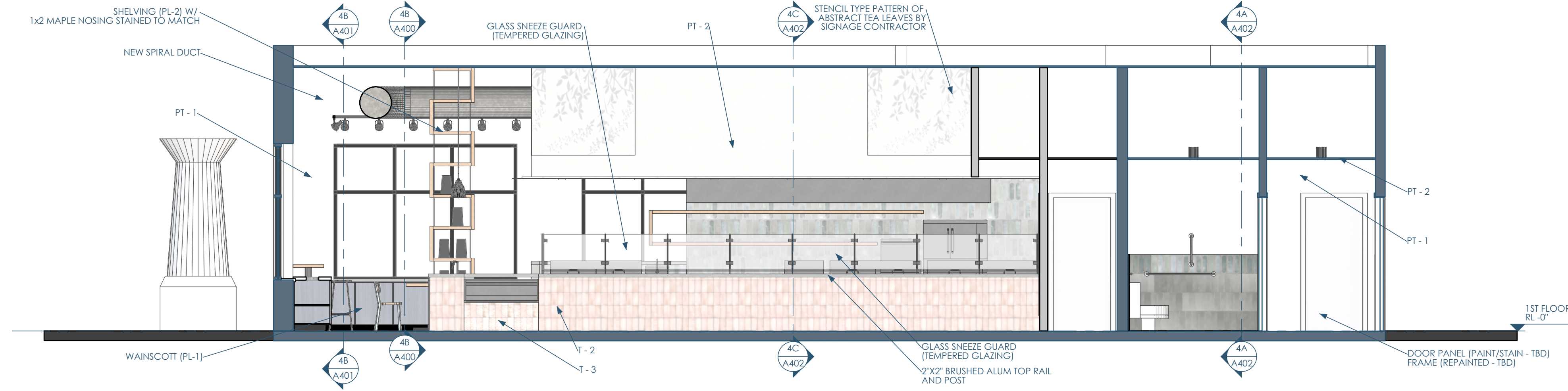
Architect: OpeningDesign
17 S Fairchild | FL 7
Madison, WI 53703
ryan@openingdesign.com | 773.425.6456



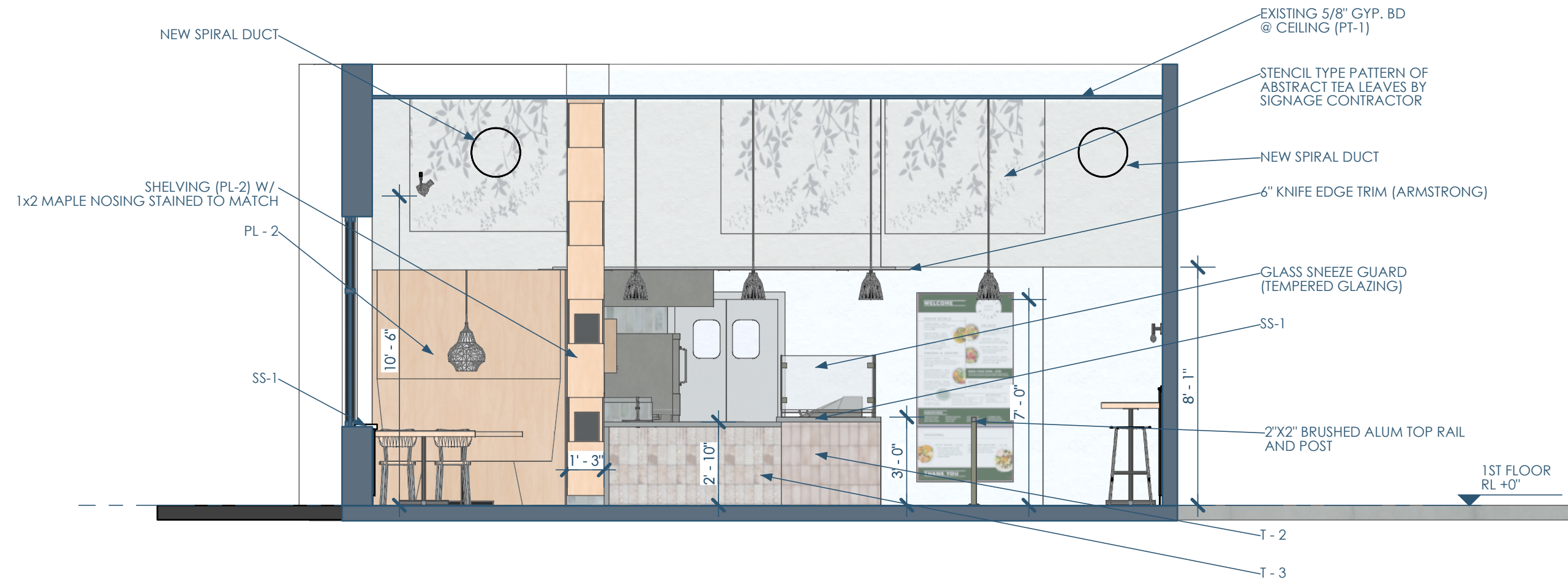
REFLECTED CEILING PLAN 02/15/2024
FK - PEWAUKEE
1390 CAPITAL DR - PEWAUKEE, WI 53072

A150

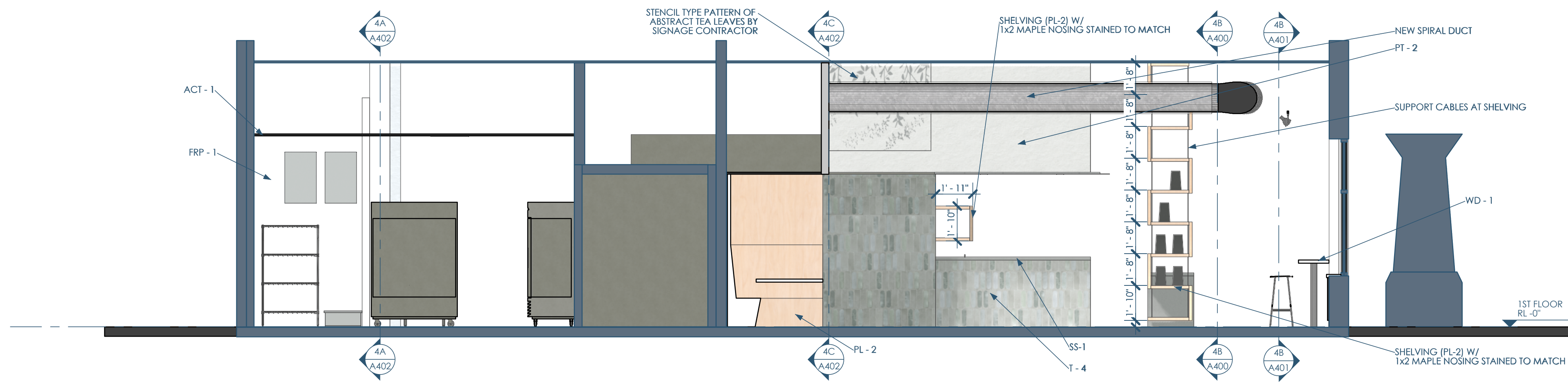
This project, like most OpeningDesign's projects, is open source (Attribution-ShareAlike 4.0 International) - freely available to any party for future use, assuming the terms such as Attribution and ShareAlike are honored.



4C/A400 SECTION - N,S - LINE - E
1/4"=1'-0"



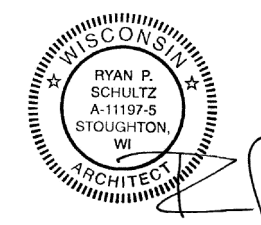
4B/A400 SECTION - E,W - POS - S
1/4"=1'-0"



5A/A400 SECTION - N,S - DINING - W
1/4"=1'-0"



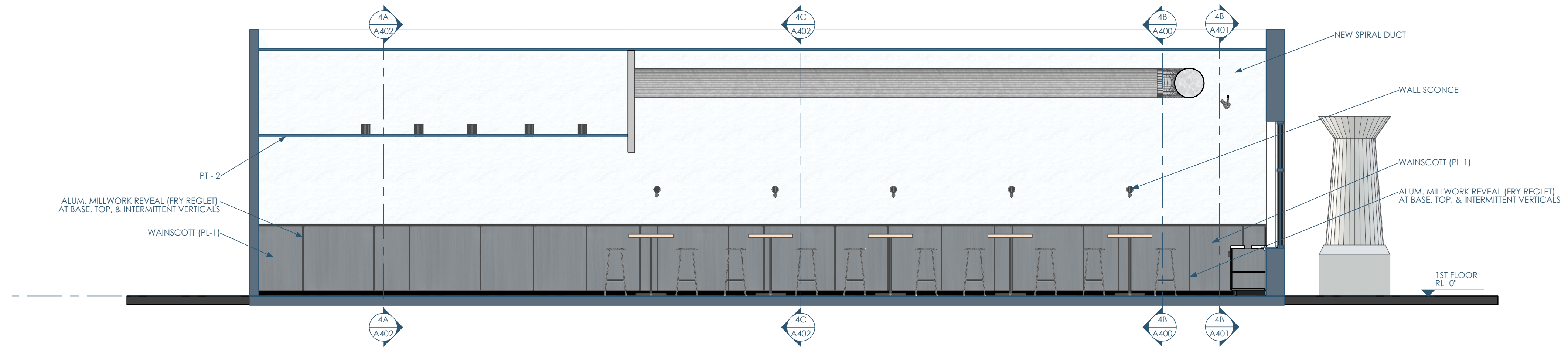
Architect: OpeningDesign
17 S Fairchild | FL 7
Madison, WI 53703
ryan@openingdesign.com | 773.425.6456



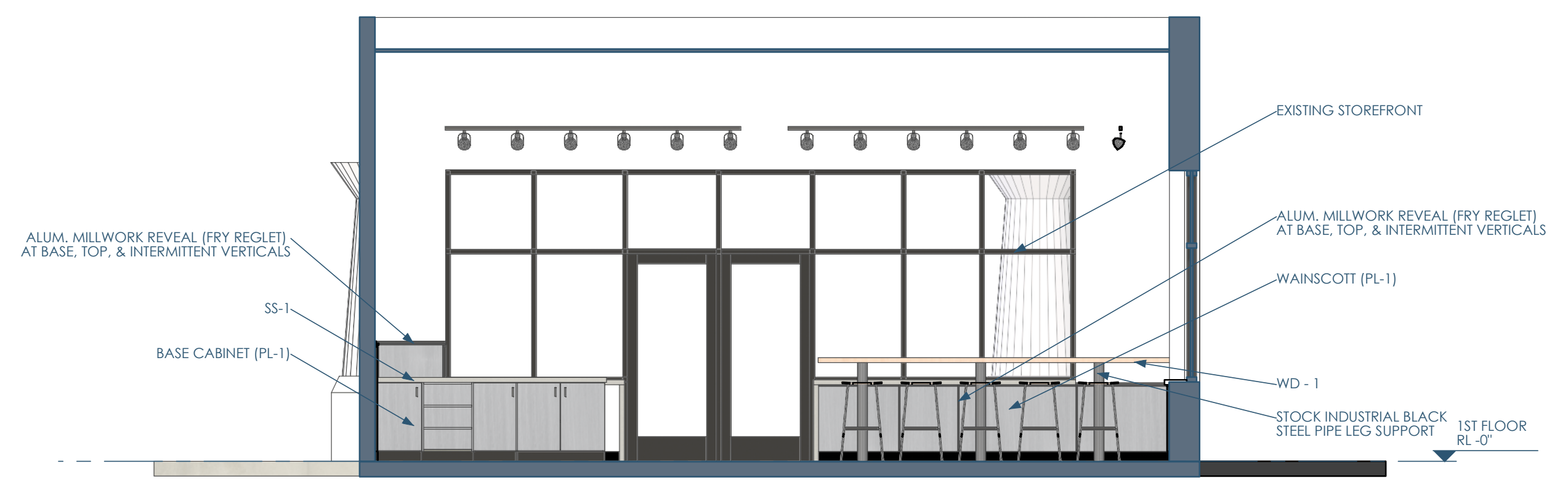
INTERIOR ELEVATIONS 02/15/2024
FK - PEWAUKEE
1390 CAPITAL DR - PEWAUKEE, WI 53072

A400

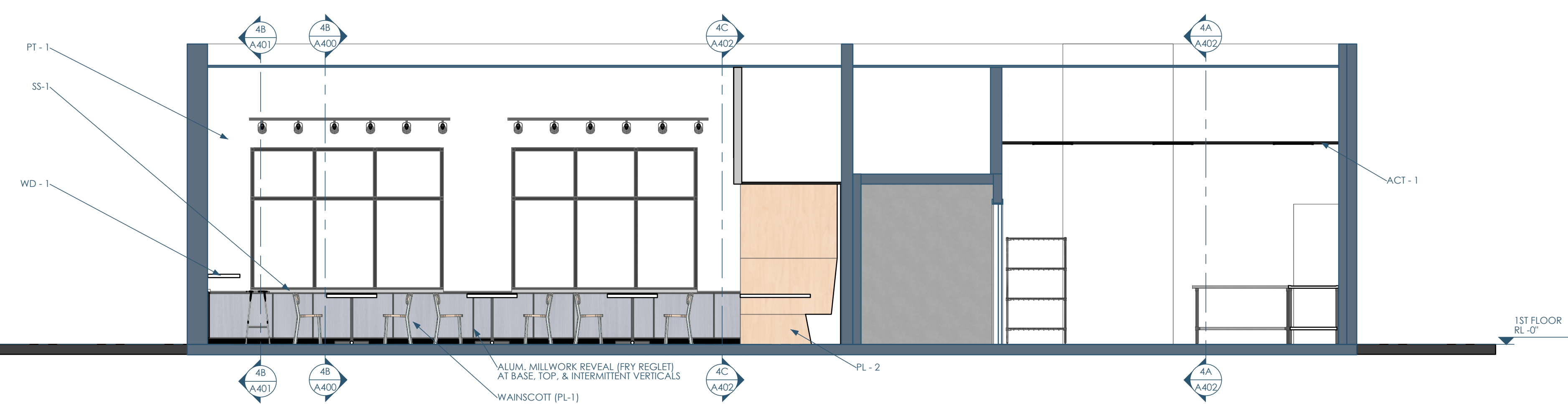
This project, like most OpeningDesign's projects, is open source. (Attribution-ShareAlike 4.0 International=CC-BY-SA 4.0)---freely available to any party for future use, assuming the terms such as Attribution and ShareAlike are honored.



5C/A401 SECTION - N_S - LINE_WALL - W
1/4"=1'-0"



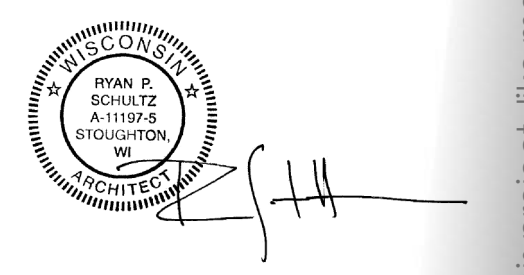
4B/A401 SECTION - E_W - POS - N
1/4"=1'-0"



5A/A401 SECTION - N_S - DINING - E
1/4"=1'-0"

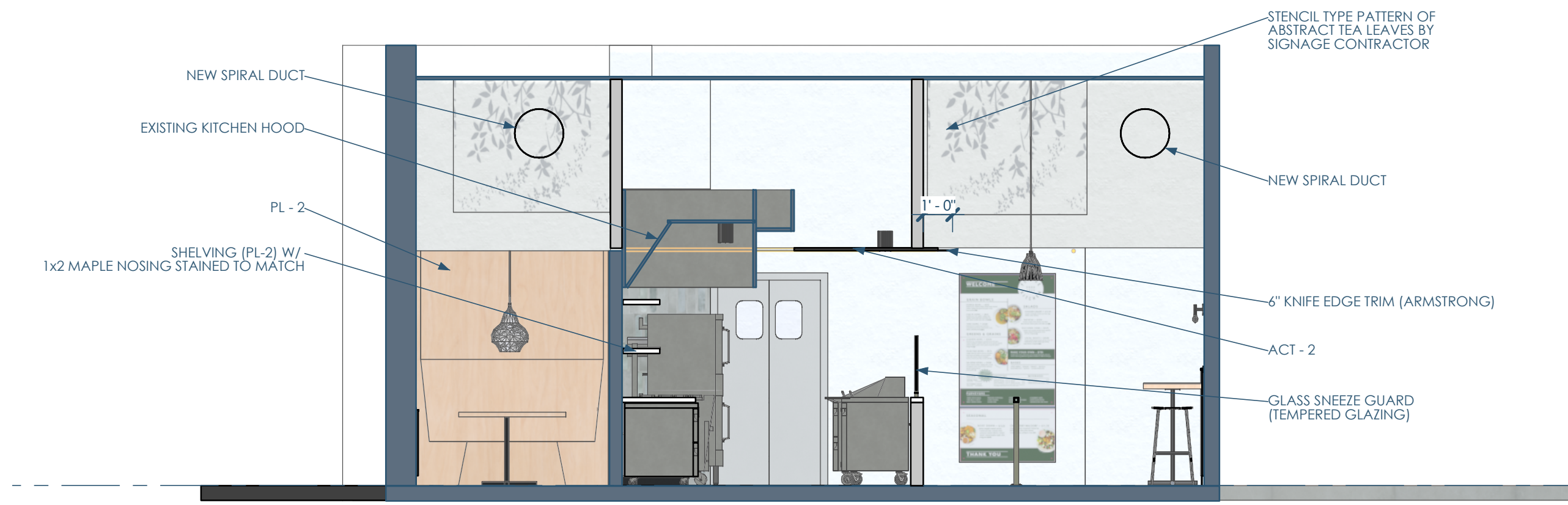


Architect: OpeningDesign
17 S Fairchild | FL 7
Madison, WI 53703
ryan@openingdesign.com | 773.425.6456

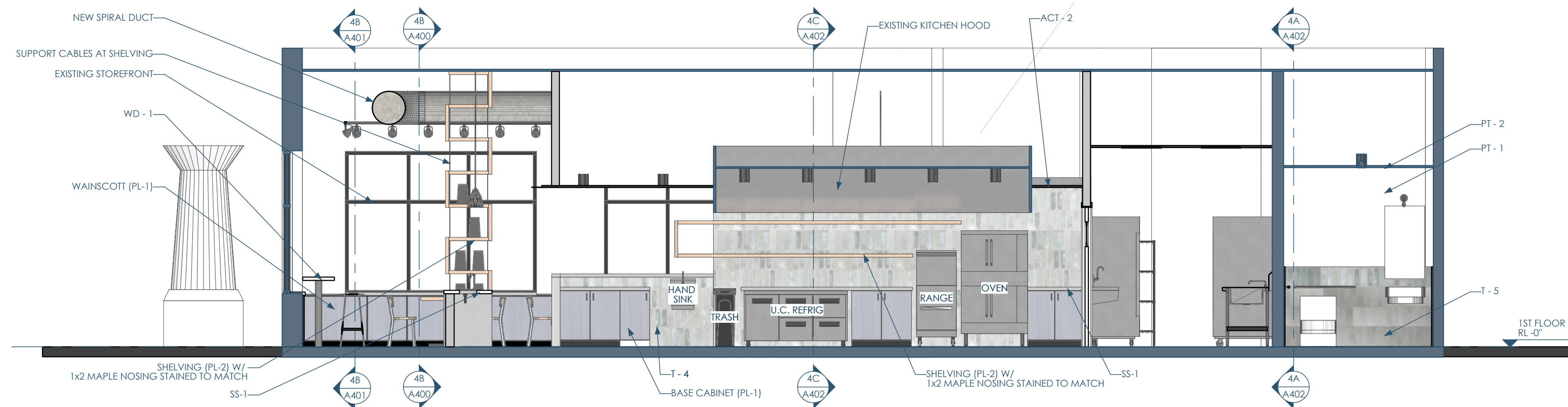


INTERIOR ELEVATIONS 02/15/2024
FK - PEWAUKEE
1390 CAPITAL DR - PEWAUKEE, WI 53072
A401

This project, like most OpeningDesign's projects, is open source (Attribution-ShareAlike 4.0 International=CC-BY-SA 4.0) - freely available to any party for future use, assuming the terms such as Attribution and ShareAlike are honored.



4C/A402 SECTION - E_W - HOOD - S
1/4"=1'-0"



5B/A402 SECTION - N_S - EMP - E
1/4"=1'-0"



4A/A402 SECTION - E_W - REST - N
1/4"=1'-0"

