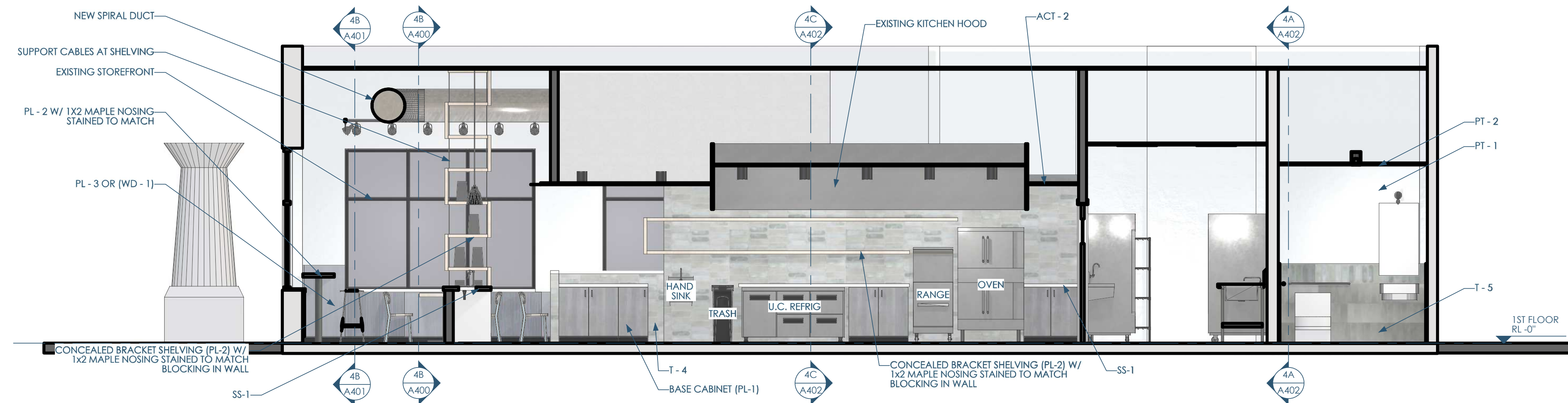
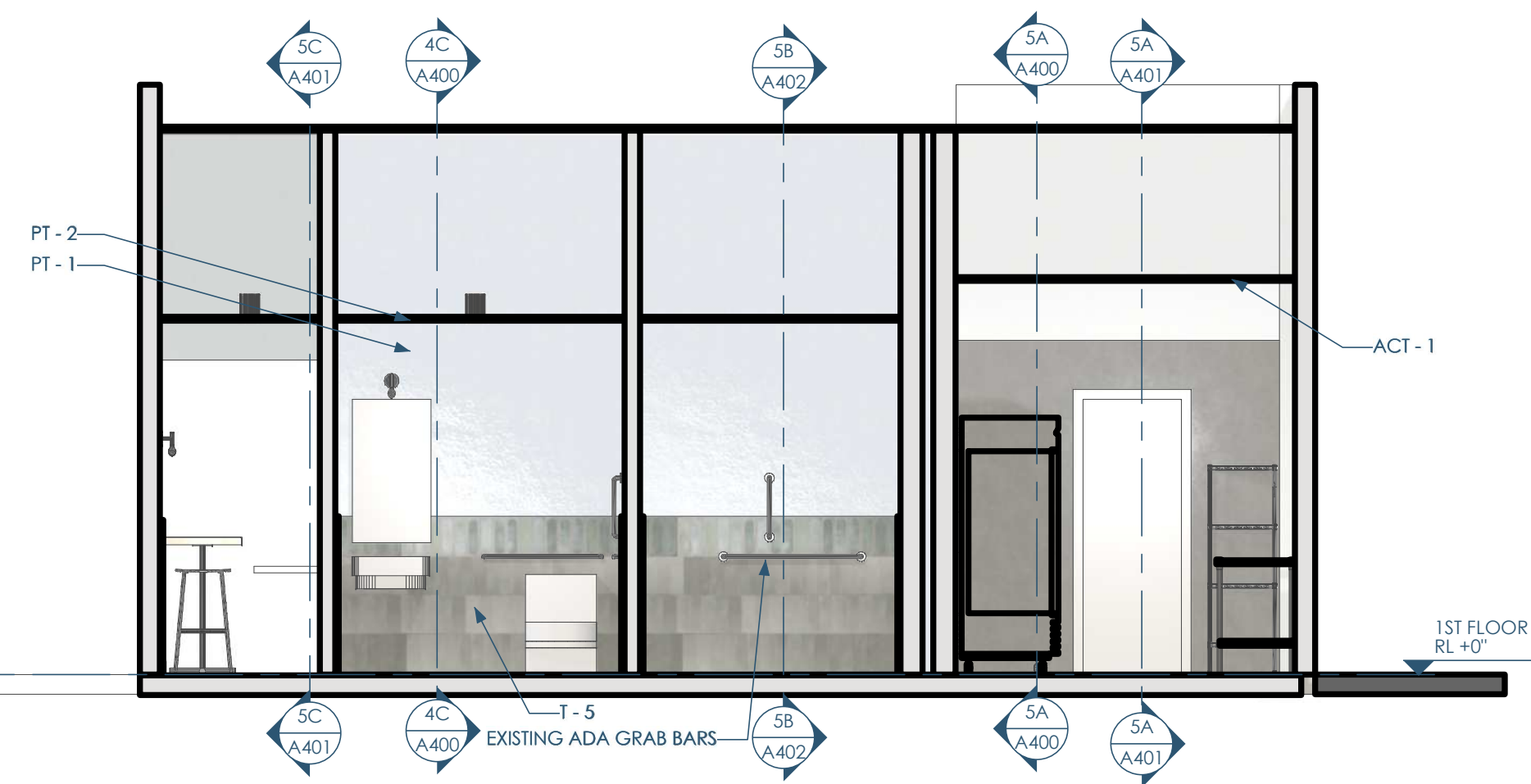




4C/A402 SECTION - E\_W - HOOD - S  
1/4"=1'-0"



5B/A402 SECTION - N\_S - EMP - E  
1/4"=1'-0"



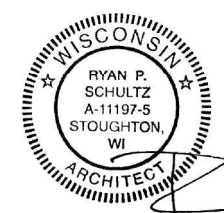
4A/A402 SECTION - E\_W - REST - N  
1/4"=1'-0"



Owner: Forage Kitchen  
5352 King James Way  
Fitchburg, WI 53719  
eatforage.com

GC: Venture Construction Group  
17500 W. Liberty Lane  
New Berlin, WI 53146  
vcginc.com

Architect: OpeningDesign  
17 S Fairchild | FL 7  
Madison, WI 53703  
ryan@openingdesign.com | 773.425.6456



Handwritten signature

This project, like most OpeningDesign's projects, is open source (Attribution-ShareAlike 4.0 International=CC-BY-SA 4.0)=freely available to any party for future use, assuming the terms such as Attribution and ShareAlike are honored.