

RENOVATION Wranglers
 Owner: Renovation Wranglers
 102 E 26th St
 Bryan, TX 77803
 kate@renovations.com | 979.450.9969

LKB ARCHITECTURE
 Architect of Record: LKB Architecture
 2929 Allen Pkwy Suite 200
 Houston, TX 77019
 lisa@lkbarchitecture.com | 713.425.3076

DUDLEY
 Structural: Dudley
 Firm # 18677
 6102 Imperial Loop Drive
 College Station, TX 77845
 colieka@dudleyeng.com | (979) 777-0720

amc ENGINEERS
 MEP: AMC Engineers
 Texas Firm #9441
 508 E Jackson St # 552
 Burnet, TX 78611
 info@amcengineers.com | 512.535.6427

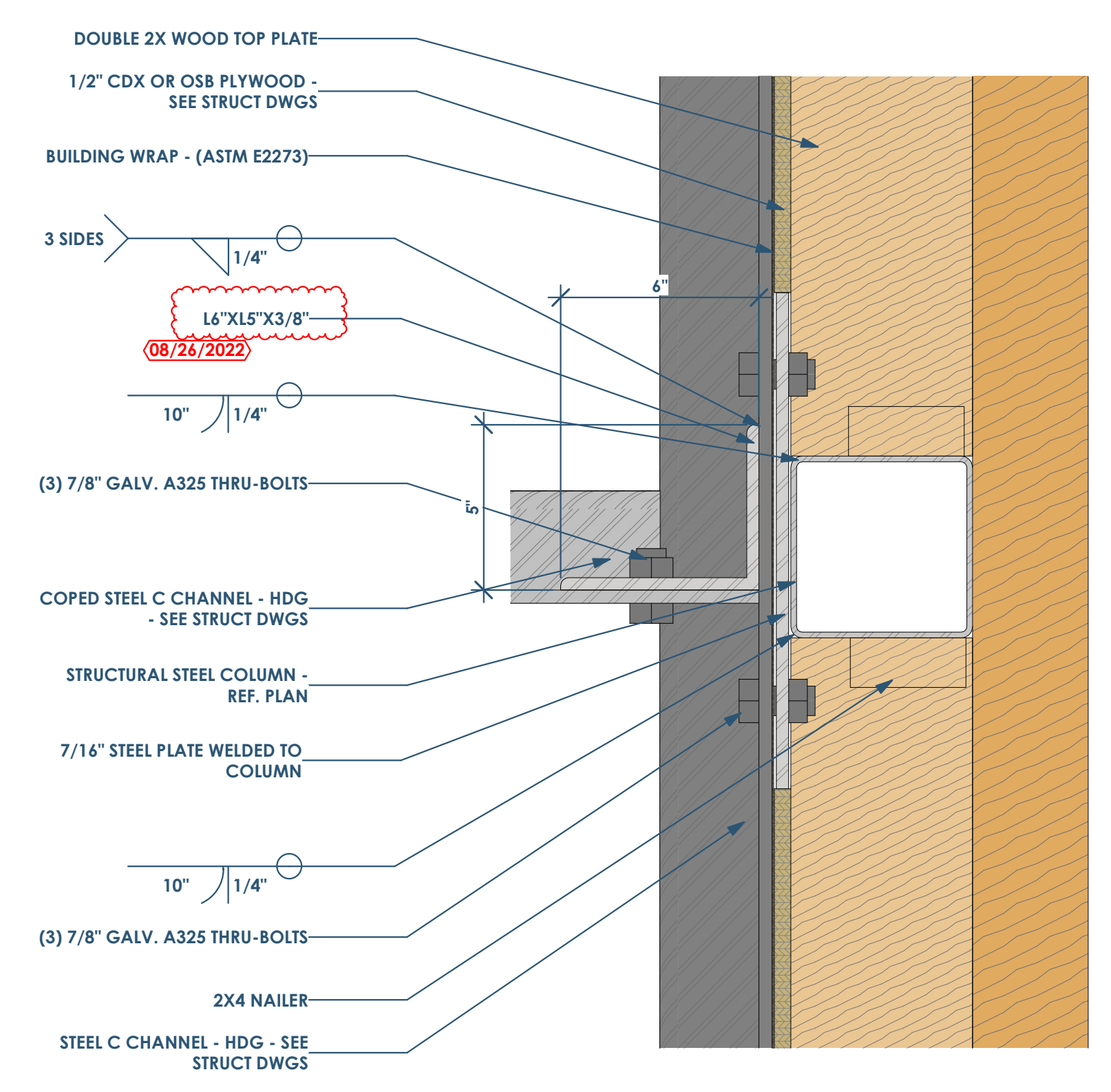
REGISTERED ARCHITECT
 LISA B. BIXLER
 22039
 STATE OF TEXAS

Lisa B. Bixler
 8.26.22

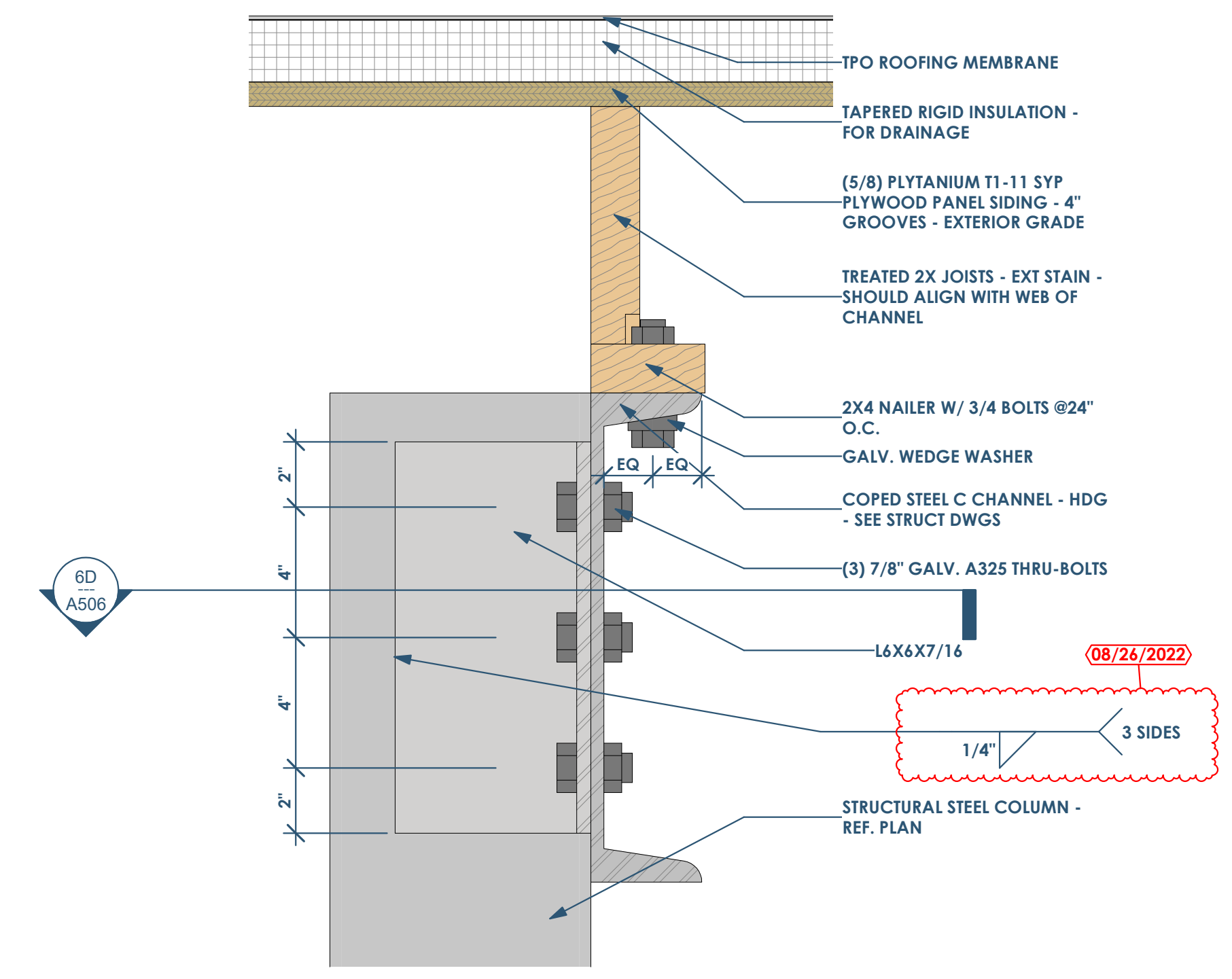
This project, like most OpeningDesign's projects, is open source. (Attribution-ShareAlike 4.0 International-CC BY-SA 4.0)-freely available to any party for future use, assuming the terms such as Attribution and ShareAlike are honored.

openingdesign
 Architect: OpeningDesign
 17 S Fairchild | FL 7
 Madison, WI 53703
 ryan@openingdesign.com | 773.425.6456

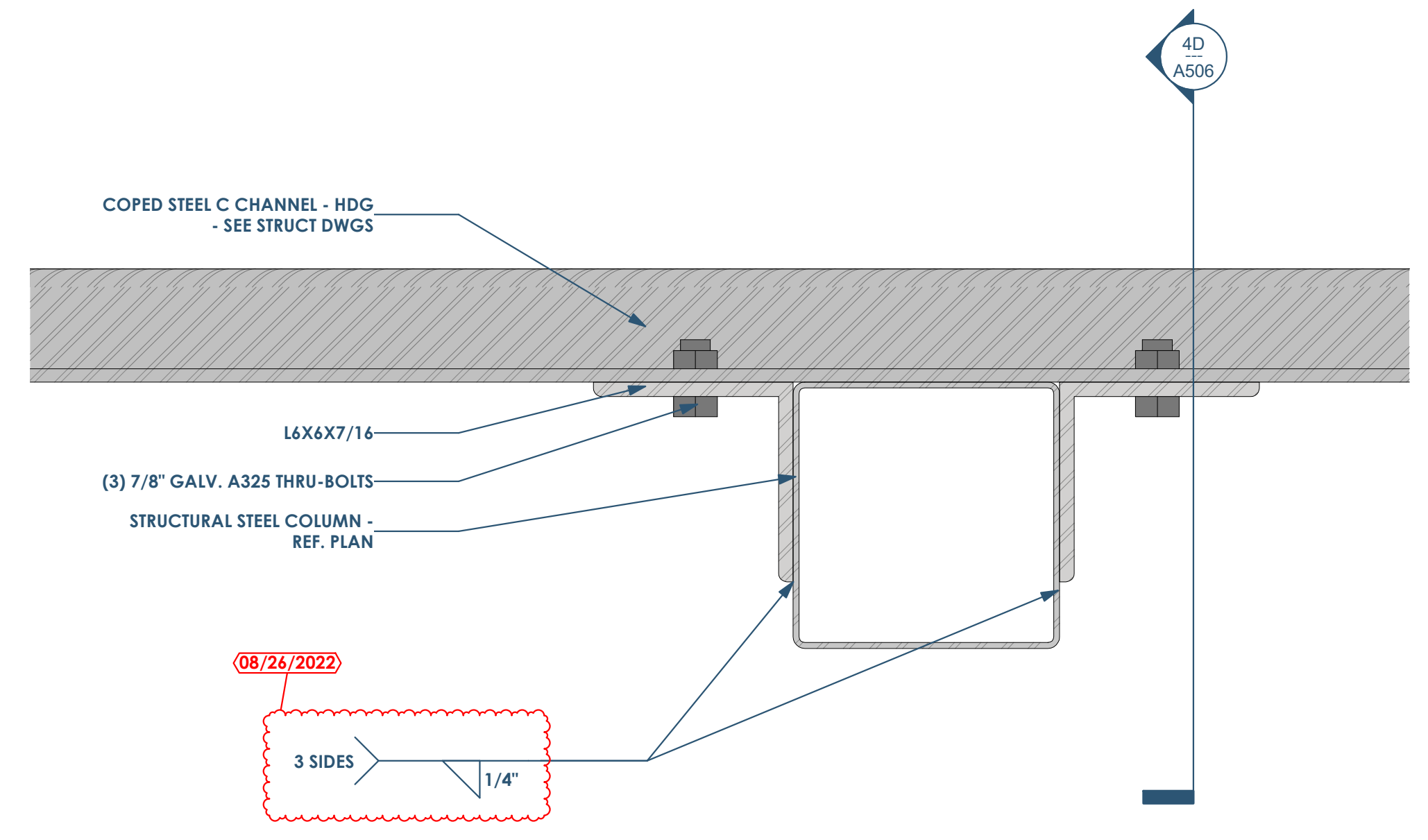
Date	Description
04/10/2022	Issued for Permit
08/26/2022	Permit Revisions



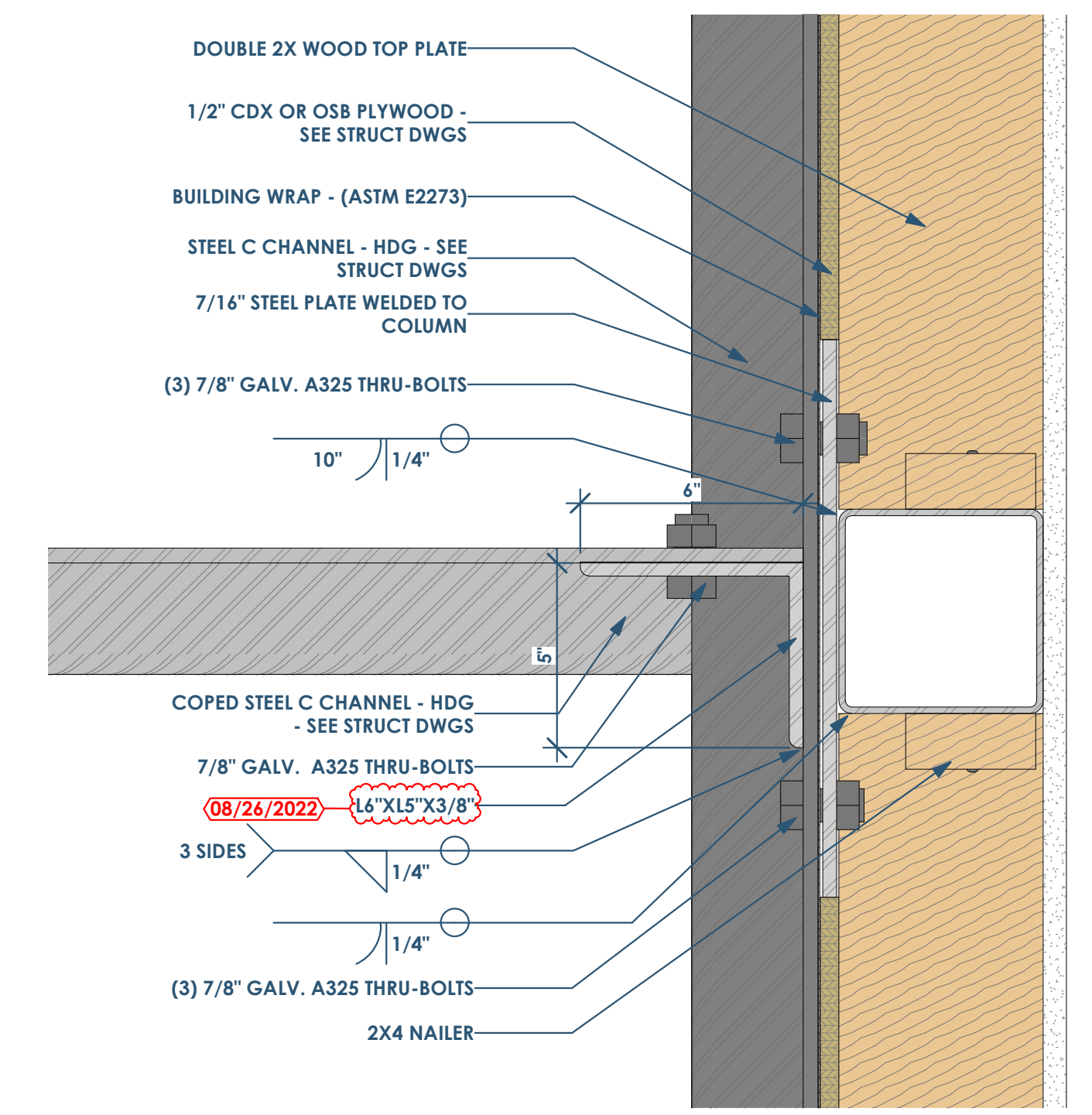
2D PLAN DETAIL C CHANEEL TO COLUMN AT WALL - ROOF
3" = 1'-0"



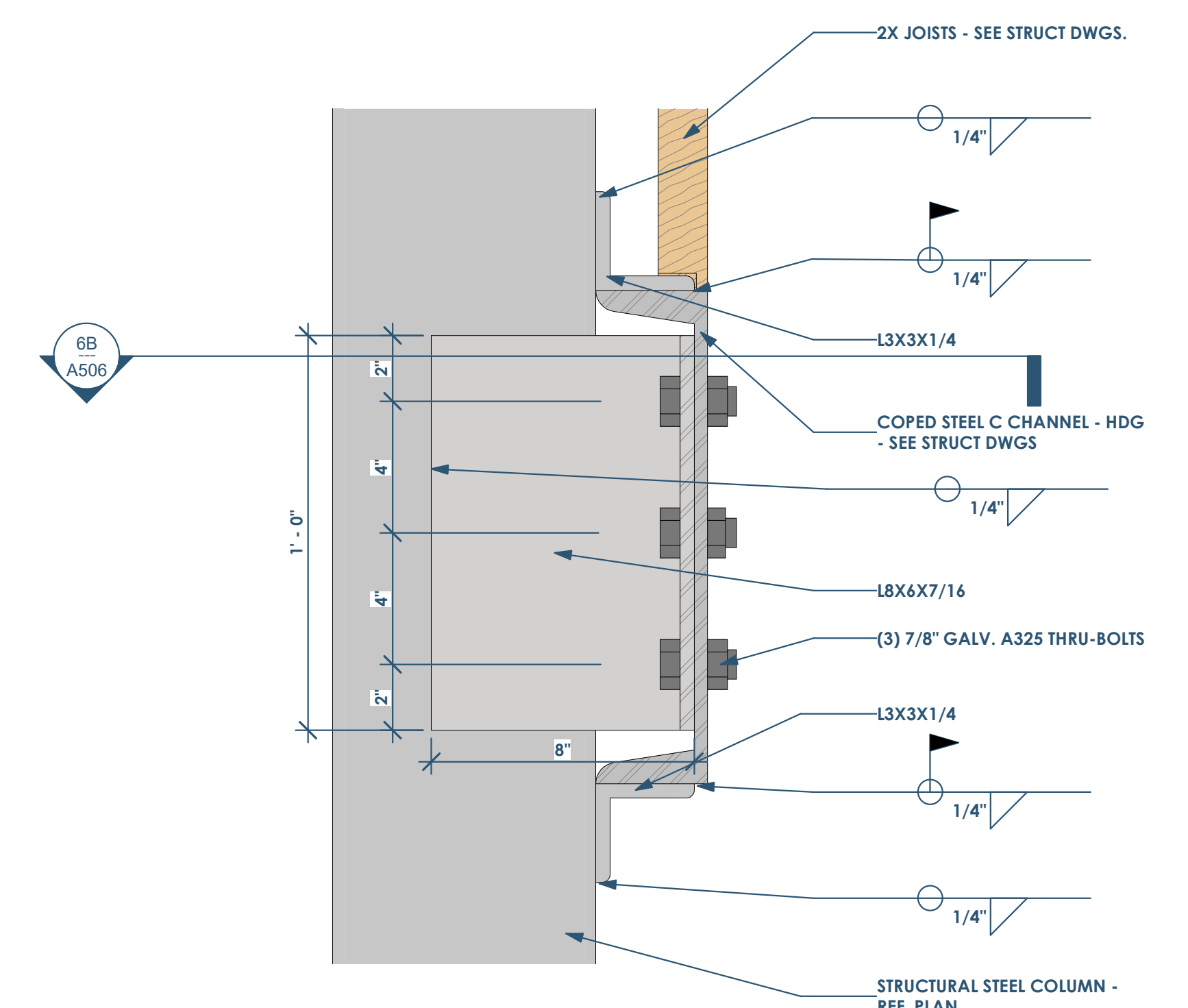
4D SECTION DETAIL C CHANNEL TO COLUMN - AT ROOF
3" = 1'-0"



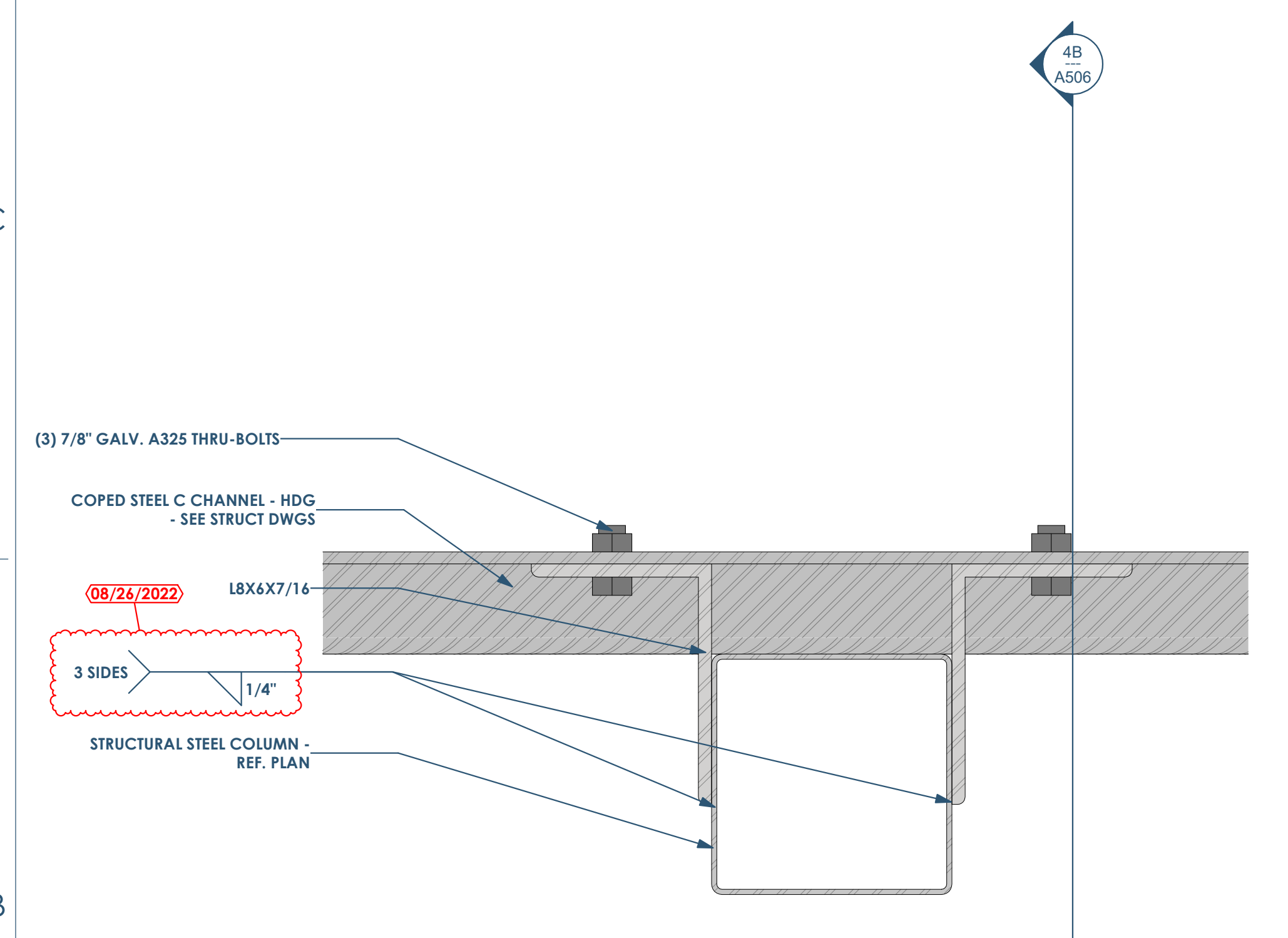
4D PLAN DETAIL C CHANEEL TO COLUMN - AT ROOF
3" = 1'-0"



2B PLAN DETAIL C CHANNEL TO COLUMN AT WALL - 3RD AND 2ND FLOORS
3" = 1'-0"



4B SECTION SECTION DETAIL C CHANNEL TO COLUMN - AT ROOF 2ND AND 3RD FLOORS
3" = 1'-0"



6B PLAN DETAIL C CHANNEL TO COLUMN - 3RD AND 2ND FLOORS
3" = 1'-0"