



Owner: Renovation Wranglers
102 E 26th St
Bryan, TX 77803
Kateneason@wranglers.com | 979.450.9969



ARCHITECTURE
Architect of Record: LKB Architecture
2929 Allen Pkwy Suite 200
Houston, TX 77019
isa@lkbarchitecture.com | 713.425.3076



STRUCTURAL: DUDLEY
Firm # 18677
6102 Imperial Loop Drive
College Station, TX 77845
corieka@dudleyeng.com | (979) 777-0720



MEP: AMC ENGINEERS
Texas Firm #9441
508 E Jackson St # 552
Burnet, TX 78611
info@amcengineers.com | 512.535.6427



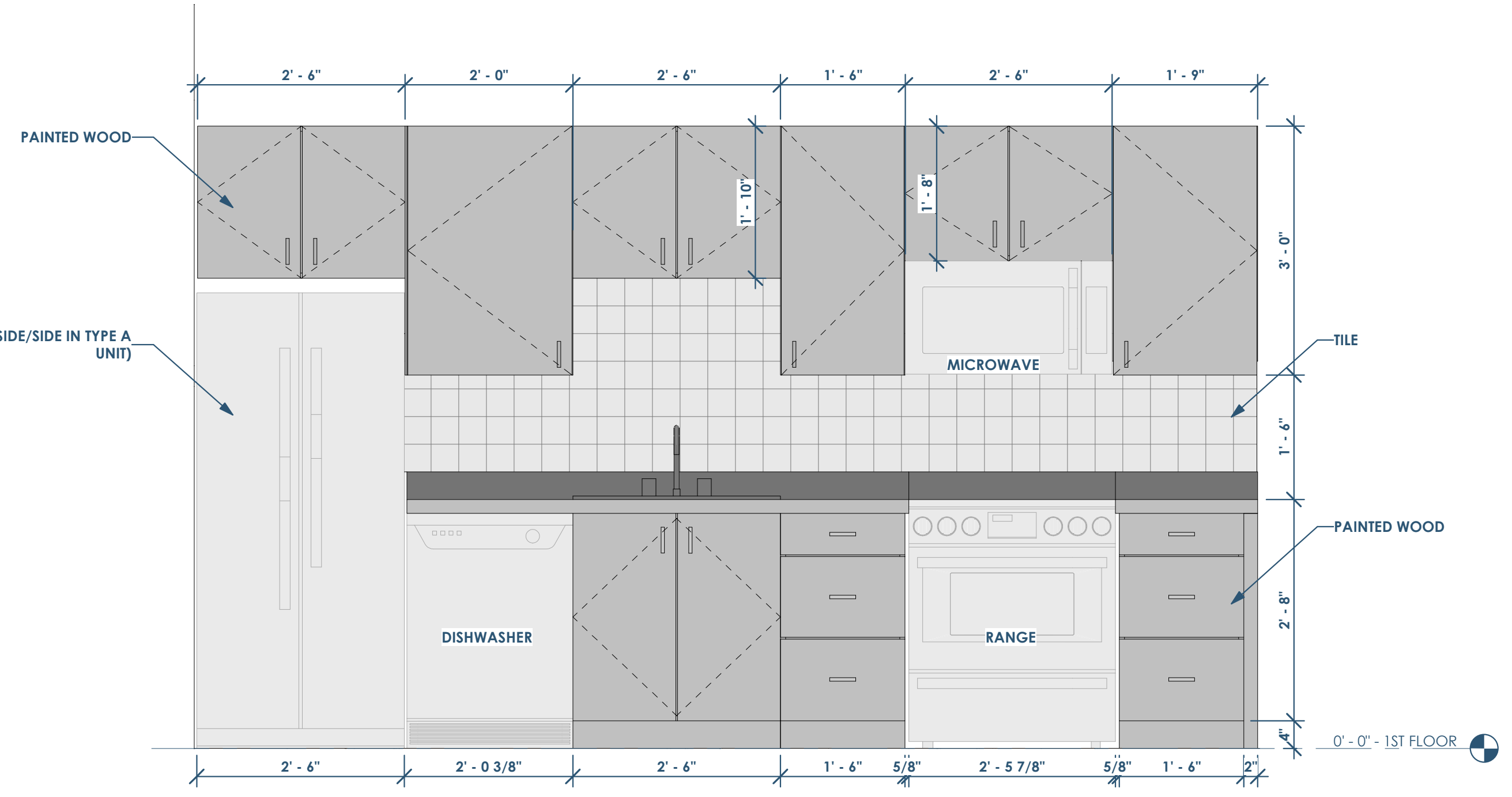
L. Bixler
8.26.22

This project, like most OpeningDesign's projects, is open source (Attribution-ShareAlike 4.0 International-CC BY-SA 4.0)-freely available to any party for future use, assuming the terms such as Attribution and ShareAlike are honored.

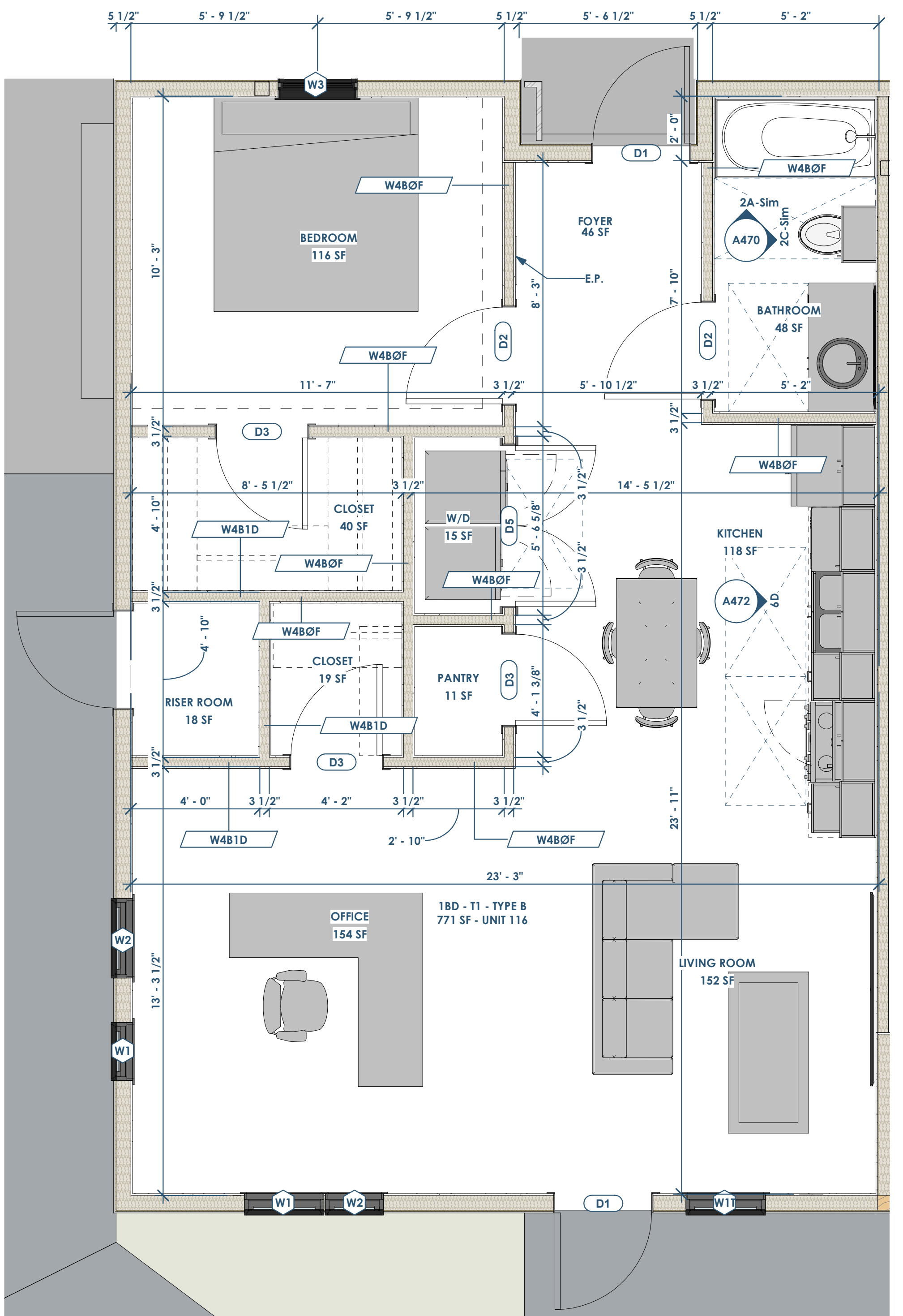


Architect: OpeningDesign
17 S Fairchild | FL 7
Madison, WI 53703
ryan@openingdesign.com | 773.425.6456

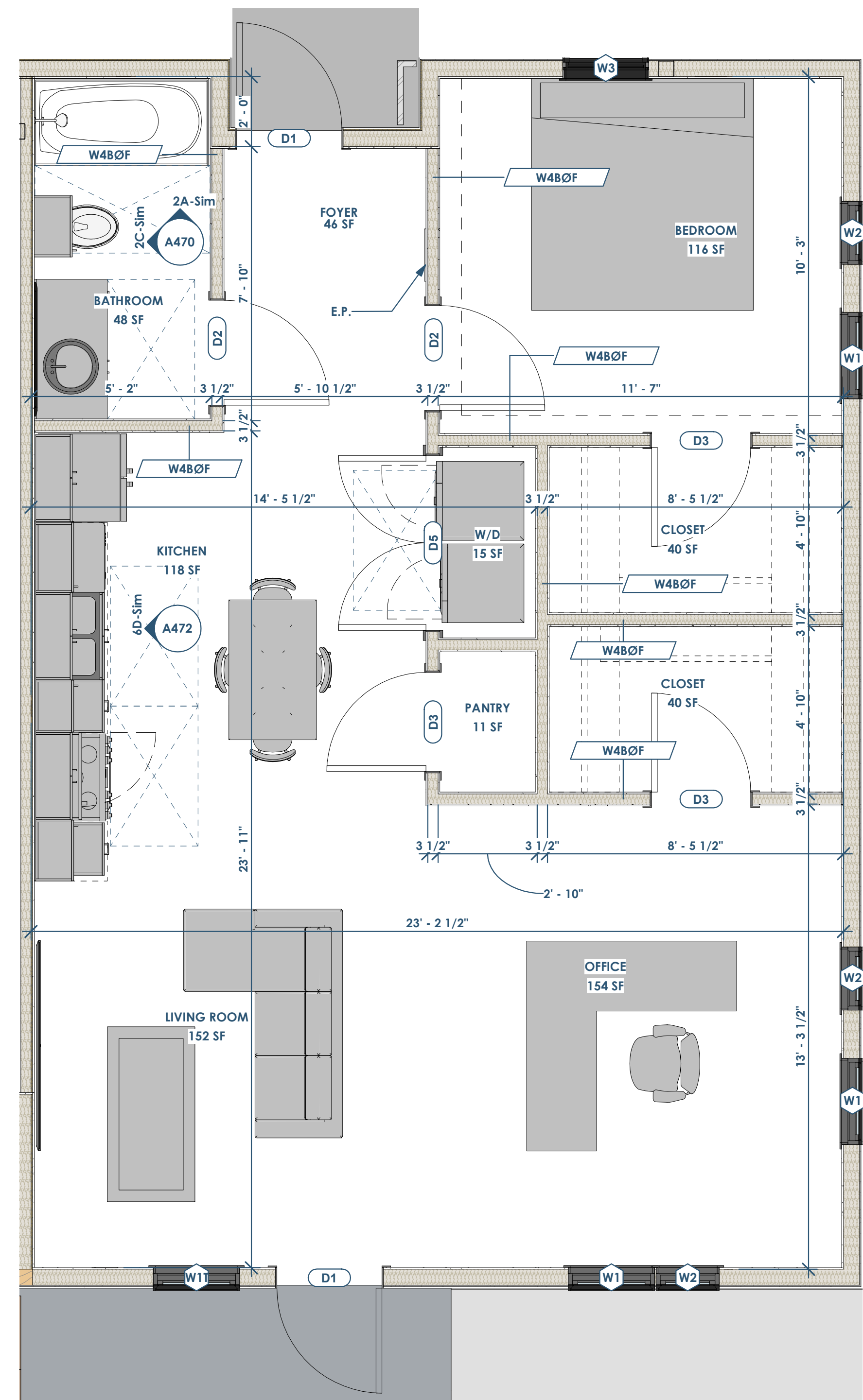
Date	Description
04/10/2022	Issued for Permit
08/26/2022	Permit Revisions



4D
A472 ELEVATION - END UNIT - KITCHEN
3/4" = 1'-0"



6A
A472 UNIT PLAN - END UNIT W/ RISER ROOM (TYPE B ADA UNIT - 1ST FLOOR ONLY)
3/8" = 1'-0"



4A
A472 UNIT PLAN - END UNIT (TYPE B ADA UNIT - 1ST FLOOR ONLY)
3/8" = 1'-0"

- FLOOR PLAN NOTES
- SEE A800 FOR PARTITION TYPES
 - SEE A600 FOR DOOR AND WINDOW TYPES
 - REFERENCE A751 FOR ACCESSIBILITY COMPLIANCE REQUIREMENTS
 - ALL FINISHES TO BE PROVIDED BY OWNER
 - MILLWORK AND APPLIANCES TO BE PROVIDED BY OWNER