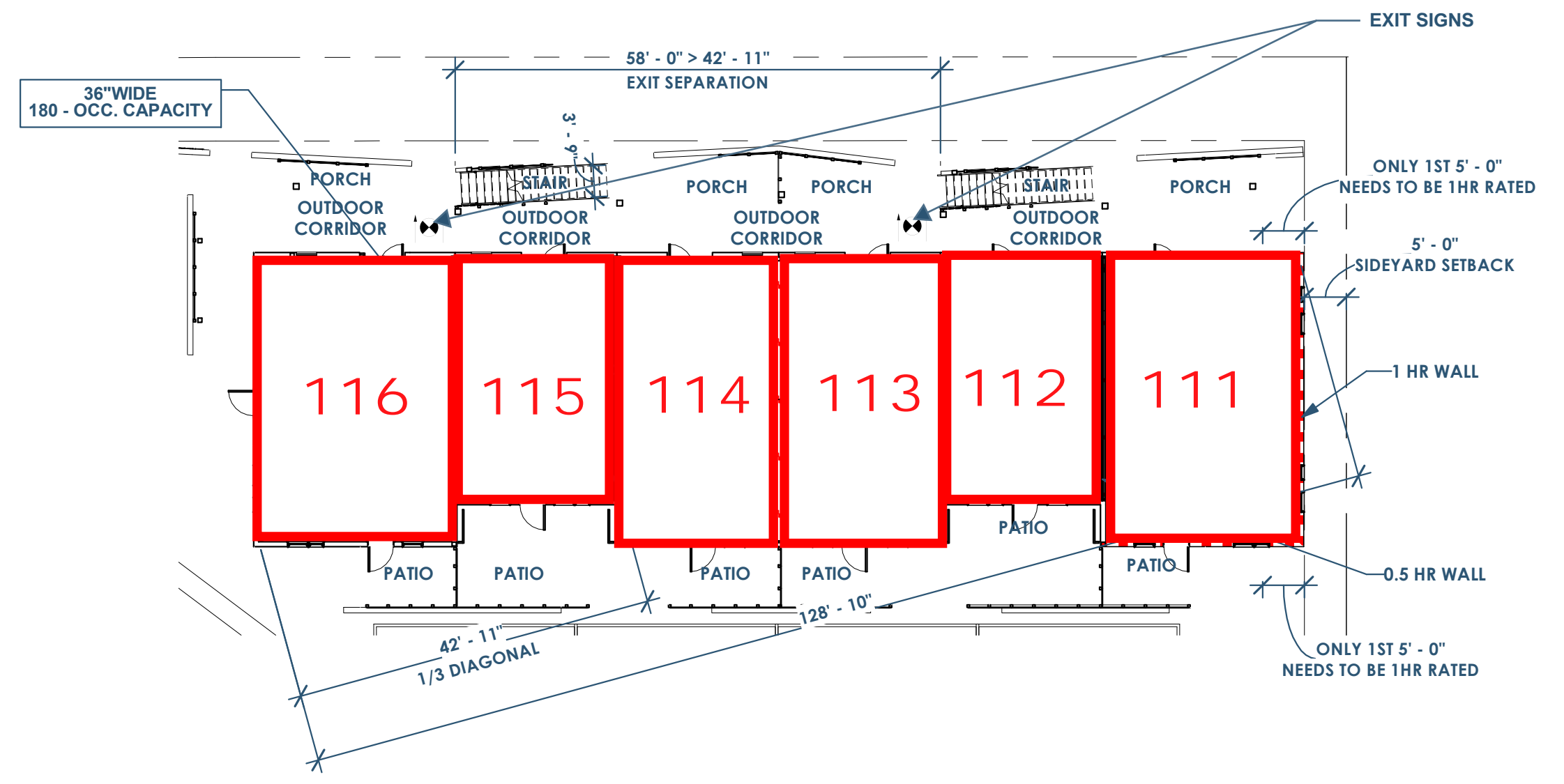
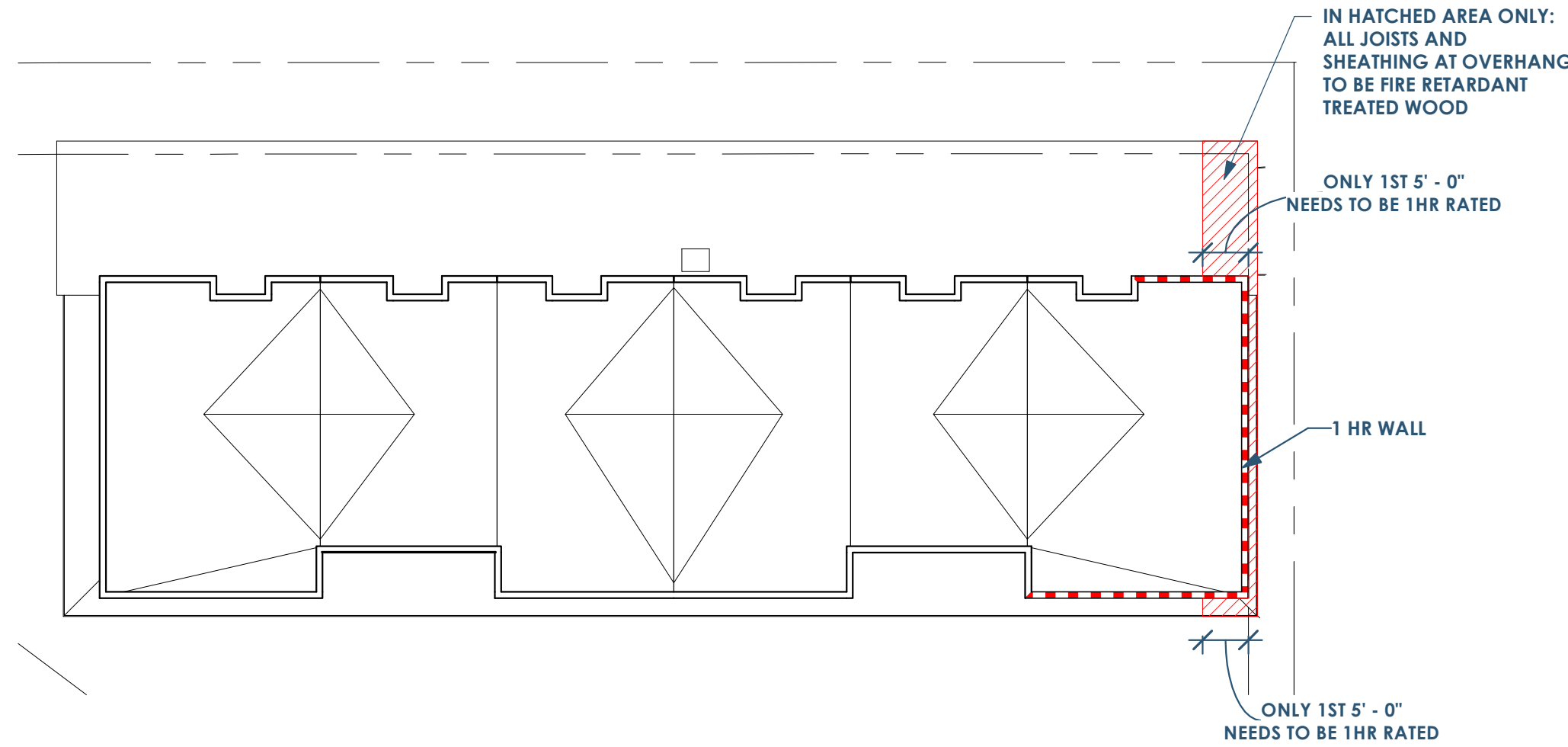


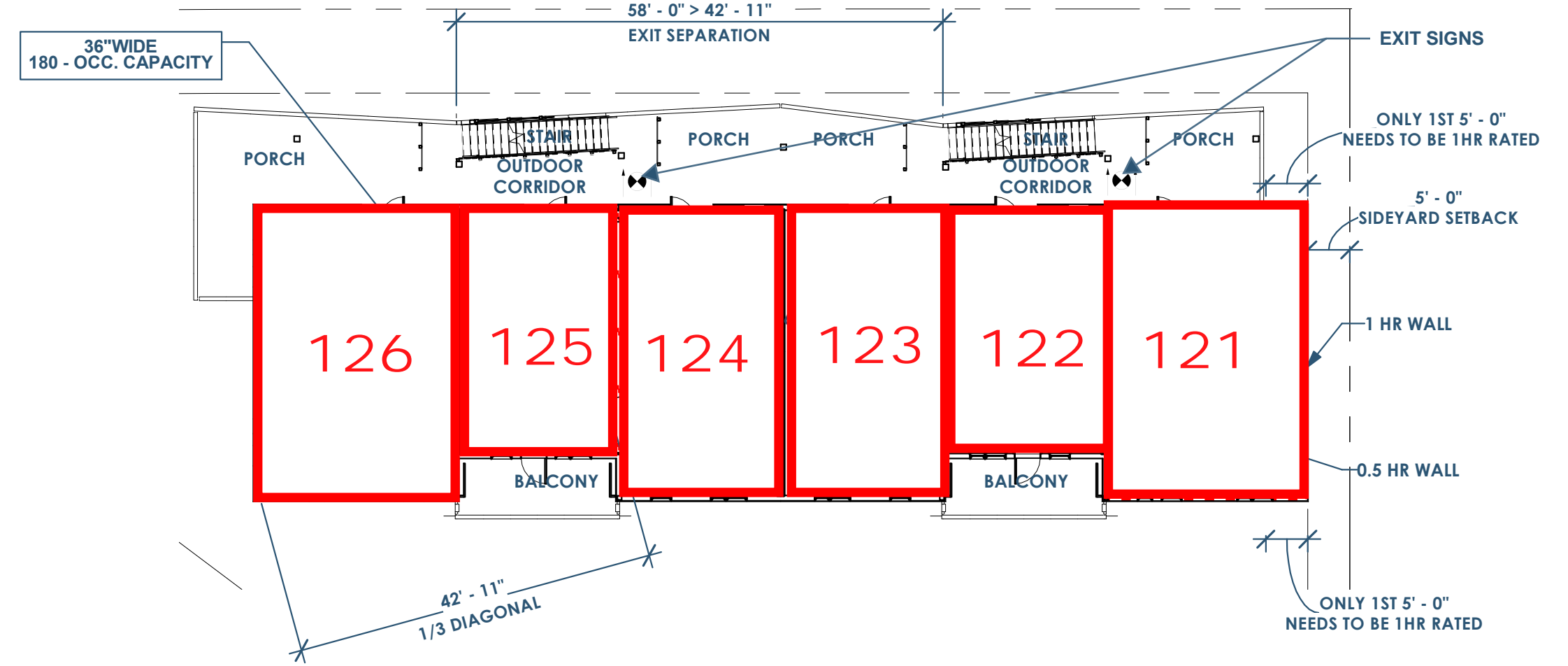
Main Address: 101 W 33rd Street



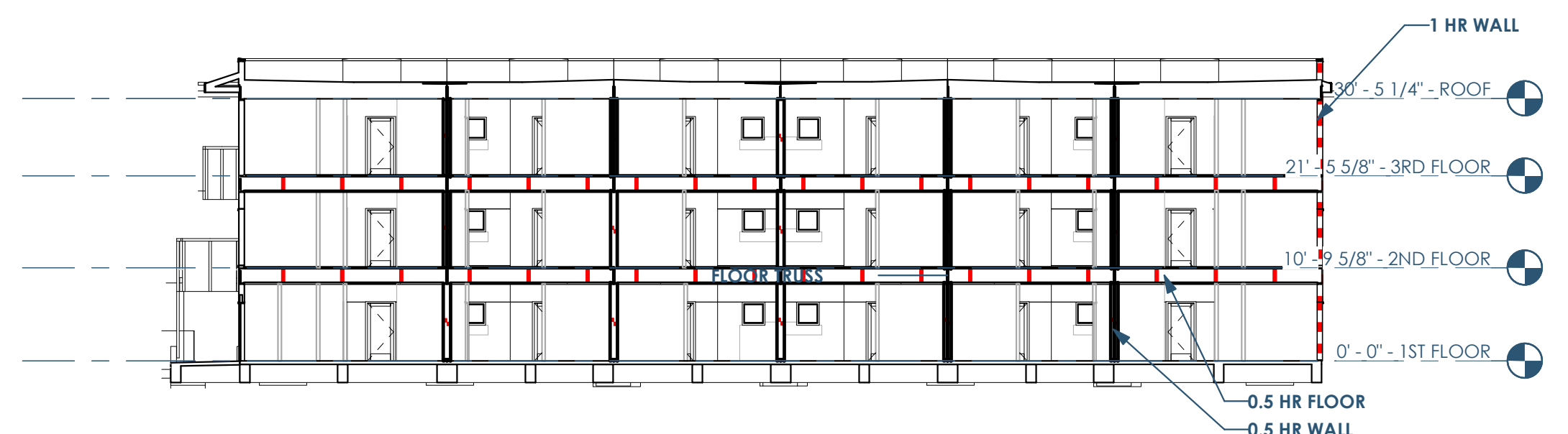
43 G001 LIFE SAFETY - 1ST FLOOR
1/16" = 1'-0"



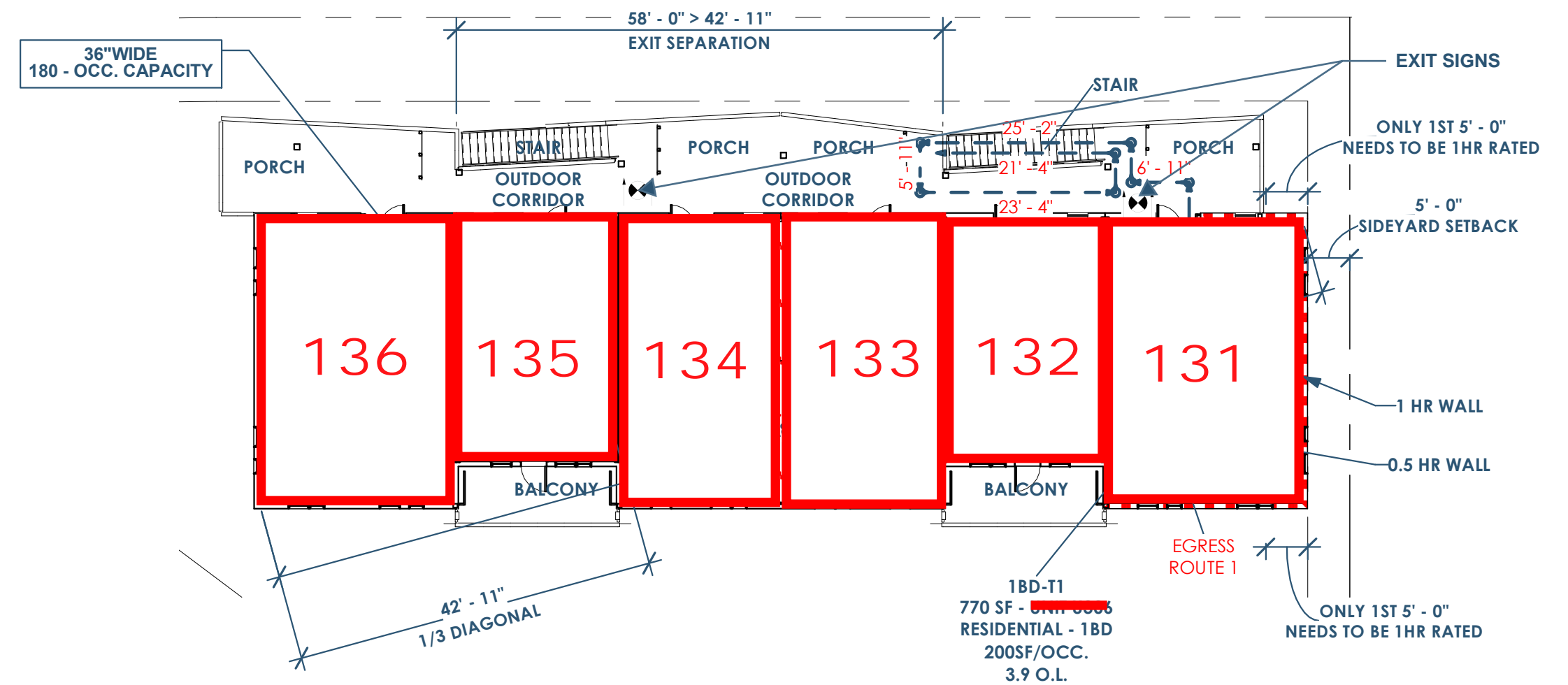
4D G001 LIFE SAFETY - ROOF
1/16" = 1'-0"



48 G001 LIFE SAFETY - 2ND FLOOR
1/16" = 1'-0"

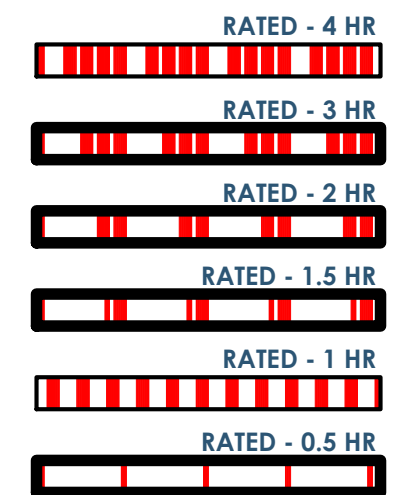


48 G001 LIFE SAFETY SECTION - EAST/WEST
1/16" = 1'-0"



54 G001 LIFE SAFETY - 3RD FLOOR
1/16" = 1'-0"

RATED WALLS/FLOORS LEGEND



EGRESS DATA	
EXIT ROUTE	DISTANCE
EGRESS ROUTE 1	141' - 4"

OCCUPANT LOAD (BASED ON TABLE 1004.1.2)						
Level	Name	Occupancy	Area	Function of Space	Area Allowance Per Occupant	Occupant Load
1ST FLOOR	OUTDOOR CORRIDOR	R-2	759 SF	CIRCULATION	200	3.8
1ST FLOOR	STAIR	R-2	84 SF	CIRCULATION	200	0.4
1ST FLOOR	STAIR	R-2	84 SF	CIRCULATION	200	0.4
1ST FLOOR	PATIO	R-2	84 SF	RESIDENTIAL	200	0.4
1ST FLOOR	PATIO	R-2	149 SF	RESIDENTIAL	200	0.7
1ST FLOOR	PATIO	R-2	98 SF	RESIDENTIAL	200	0.5
1ST FLOOR	PATIO	R-2	96 SF	RESIDENTIAL	200	0.5
1ST FLOOR	PATIO	R-2	141 SF	RESIDENTIAL	200	0.8
1ST FLOOR	PATIO	R-2	90 SF	RESIDENTIAL	200	0.4
1ST FLOOR	PORCH	R-2	145 SF	RESIDENTIAL	200	0.7
1ST FLOOR	PORCH	R-2	97 SF	RESIDENTIAL	200	0.5
1ST FLOOR	PORCH	R-2	94 SF	RESIDENTIAL	200	0.5
1ST FLOOR	PORCH	R-2	86 SF	RESIDENTIAL	200	0.4
1ST FLOOR	18D-T1	R-2	770 SF	RESIDENTIAL - 18D	200	3.9
1ST FLOOR	18D-T1	R-2	770 SF	RESIDENTIAL - 18D	200	3.9
1ST FLOOR	STUDIO - T1	R-2	615 SF	RESIDENTIAL - ST	200	3.1
1ST FLOOR	STUDIO - T1	R-2	615 SF	RESIDENTIAL - ST	200	3.1
1ST FLOOR	STUDIO - T2	R-2	522 SF	RESIDENTIAL - ST	200	2.6
1ST FLOOR	STUDIO - T2	R-2	522 SF	RESIDENTIAL - ST	200	2.6
1ST FLOOR: 19			5842 SF			29.2
2ND FLOOR	OUTDOOR CORRIDOR	R-2	613 SF	CIRCULATION	200	3.1
2ND FLOOR	STAIR	R-2	84 SF	CIRCULATION	200	0.4
2ND FLOOR	STAIR	R-2	84 SF	CIRCULATION	200	0.4
2ND FLOOR	BALCONY	R-2	123 SF	RESIDENTIAL	200	0.6
2ND FLOOR	BALCONY	R-2	123 SF	RESIDENTIAL	200	0.6
2ND FLOOR	PORCH	R-2	334 SF	RESIDENTIAL	200	1.7
2ND FLOOR	PORCH	R-2	107 SF	RESIDENTIAL	200	0.5
2ND FLOOR	PORCH	R-2	101 SF	RESIDENTIAL	200	0.5
2ND FLOOR	PORCH	R-2	131 SF	RESIDENTIAL	200	0.7
2ND FLOOR	18D-T1	R-2	770 SF	RESIDENTIAL - 18D	200	3.9
2ND FLOOR	18D-T1	R-2	770 SF	RESIDENTIAL - 18D	200	3.9
2ND FLOOR	STUDIO - T1	R-2	617 SF	RESIDENTIAL - ST	200	3.1
2ND FLOOR	STUDIO - T1	R-2	617 SF	RESIDENTIAL - ST	200	3.1
2ND FLOOR	STUDIO - T2	R-2	525 SF	RESIDENTIAL - ST	200	2.6
2ND FLOOR	STUDIO - T2	R-2	525 SF	RESIDENTIAL - ST	200	2.6
2ND FLOOR: 15			5524 SF			27.4
3RD FLOOR	OUTDOOR CORRIDOR	R-2	635 SF	CIRCULATION	200	3.2
3RD FLOOR	STAIR	R-2	84 SF	CIRCULATION	200	0.4
3RD FLOOR	STAIR	R-2	81 SF	CIRCULATION	200	0.4
3RD FLOOR	BALCONY	R-2	123 SF	RESIDENTIAL	200	0.6
3RD FLOOR	BALCONY	R-2	123 SF	RESIDENTIAL	200	0.6
3RD FLOOR	PORCH	R-2	224 SF	RESIDENTIAL	200	1.1
3RD FLOOR	PORCH	R-2	107 SF	RESIDENTIAL	200	0.5
3RD FLOOR	PORCH	R-2	101 SF	RESIDENTIAL	200	0.5
3RD FLOOR	PORCH	R-2	131 SF	RESIDENTIAL	200	0.7
3RD FLOOR	18D-T1	R-2	770 SF	RESIDENTIAL - 18D	200	3.9
3RD FLOOR	18D-T1	R-2	770 SF	RESIDENTIAL - 18D	200	3.9
3RD FLOOR	STUDIO - T1	R-2	618 SF	RESIDENTIAL - ST	200	3.1
3RD FLOOR	STUDIO - T1	R-2	618 SF	RESIDENTIAL - ST	200	3.1
3RD FLOOR	STUDIO - T2	R-2	525 SF	RESIDENTIAL - ST	200	2.6
3RD FLOOR	STUDIO - T2	R-2	525 SF	RESIDENTIAL - ST	200	2.6
3RD FLOOR: 15			5435 SF			27.2
Grand total: 49			16804 SF			84.0

This project, like most OpeningDesign's projects, is open source (Attribution-ShareAlike 4.0 International-CC BY-SA 4.0)-freely available to any party for future use, assuming the terms such as Attribution and ShareAlike are honored.

RENOVATION Wranglers
 Owner: Renovation Wranglers
 102 E 26th St
 Bryan, TX 77803
 kate@renovationwranglers.com | 979.450.9969

ARCHITECTURE
 Architect of Record: LKB Architecture
 2929 Allen Pkwy Suite 200
 Houston, TX 77019
 isa@lkbarchitecture.com | 713.425.3076

MEP
 Structural: Dudley
 4102 Imperial Loop Drive
 College Station, TX 77845
 (979) 777-0720

MEP: AMC ENGINEERS
 508 E Jackson St # 552
 Burnet, TX 78611
 info@amcengineers.com



Lisa B. Bixler
 6-10-22

openingdesign
 Architect: OpeningDesign
 17 S Fairchild | FL 7
 Madison, WI 53703
 ryan@openingdesign.com | 773.425.6456

Date	Description
06/10/2022	Issued for Permit