



A101 01 - FLOOR PLAN - 1ST FLOOR  
1/4" = 1'-0"

**RENOVATION**  
Wranglers  
Engineers  
Owner: Renovation Wranglers  
102 E 26th St  
Bryan, TX 77803  
Kateneason@wrangler.com | 979.450.9969

**LKB**  
ARCHITECTURE  
Architect of Record: LKB Architecture  
2929 Allen Pkwy Suite 200  
Houston, TX 77019  
isa@lkbarchitecture.com | 713.425.3076

**DUDLEY**  
Structural: Dudley  
6102 Imperial Loop Drive  
College Station, TX 77845  
(979) 777-0720

**amc**  
ENGINEERS  
MEP: AMC Engineers  
508 E Jackson St # 552  
Burnet, TX 78611  
info@amcengineers.com

This project, like most OpeningDesign's projects, is open source (Attribution-ShareAlike 4.0 International-CC BY-SA 4.0)-freely available to any party for future use, assuming the terms such as Attribution and ShareAlike are honored.

**openingdesign**  
Architect: OpeningDesign  
17 S Fairchild | FL 7  
Madison, WI 53703  
ryan@openingdesign.com | 773.425.6456

Date	Description
02.22.2022	Progress DD Set

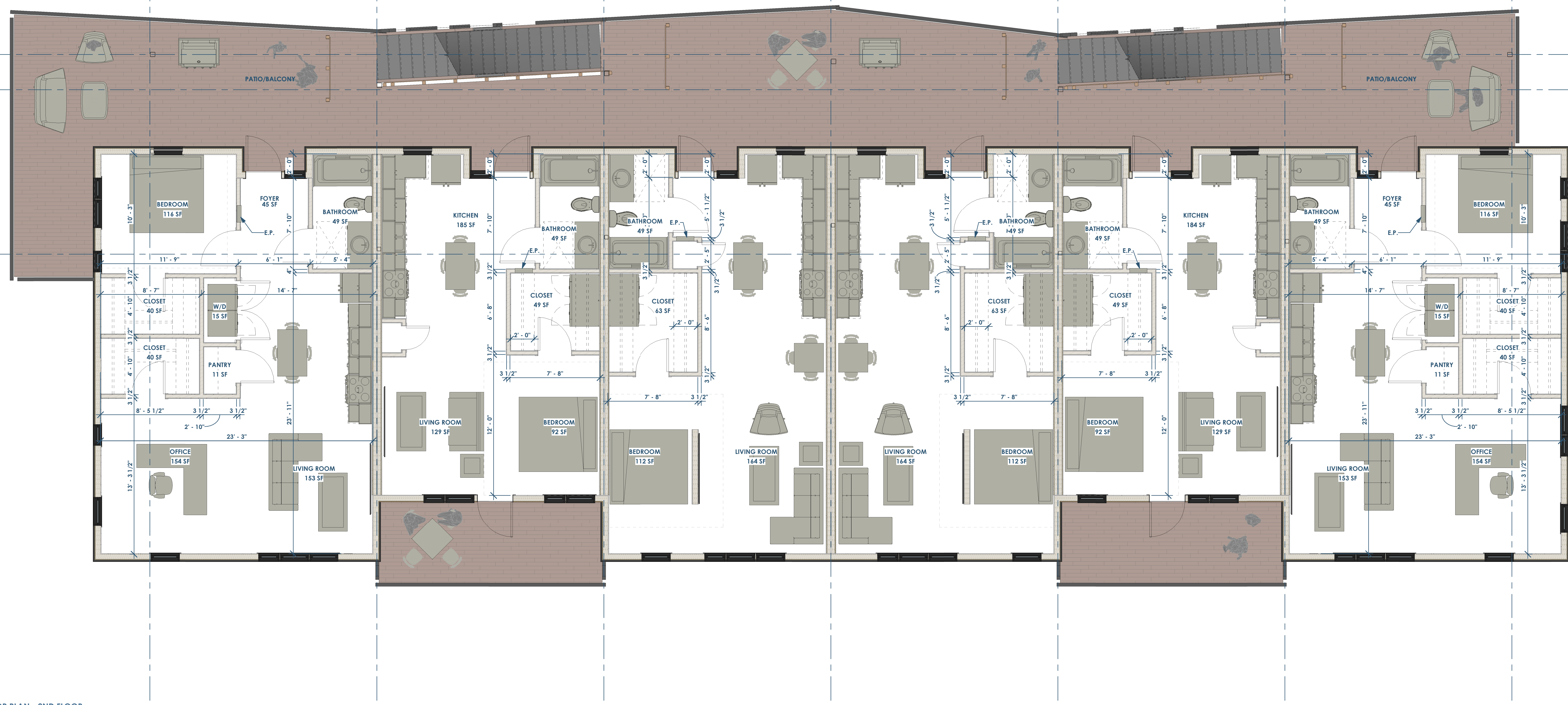
RENOVATION Wranglers  
Owner: Renovation Wranglers  
102 E 26th St  
Bryan, TX 77803  
Kateneason@time.com | 979.450.9969

LKB ARCHITECTURE  
Architect of Record: LKB Architecture  
2929 Allen Pkwy Suite 200  
Houston, TX 77019  
isa@lkbarchitecture.com | 713.425.3076

DUDLEY  
Structural: Dudley  
6102 Imperial Loop Drive  
College Station, TX 77845  
(979) 777-0720

amc ENGINEERS  
MEP: AMC Engineers  
508 E Jackson St # 552  
Burnet, TX 78611  
info@amcengineers.com

This project, like most OpeningDesign's projects, is open source (Attribution-ShareAlike 4.0 International-CC BY-SA 4.0)-freely available to any party for future use, assuming the terms such as Attribution and ShareAlike are honored.



01 - FLOOR PLAN - 2ND FLOOR  
1/4" = 1'-0"

openingdesign  
Architect: OpeningDesign  
17 S Fairchild | FL 7  
Madison, WI 53703  
ryan@openingdesign.com | 773.425.6456

Date	Description
02.22.2022	Progress DD Set

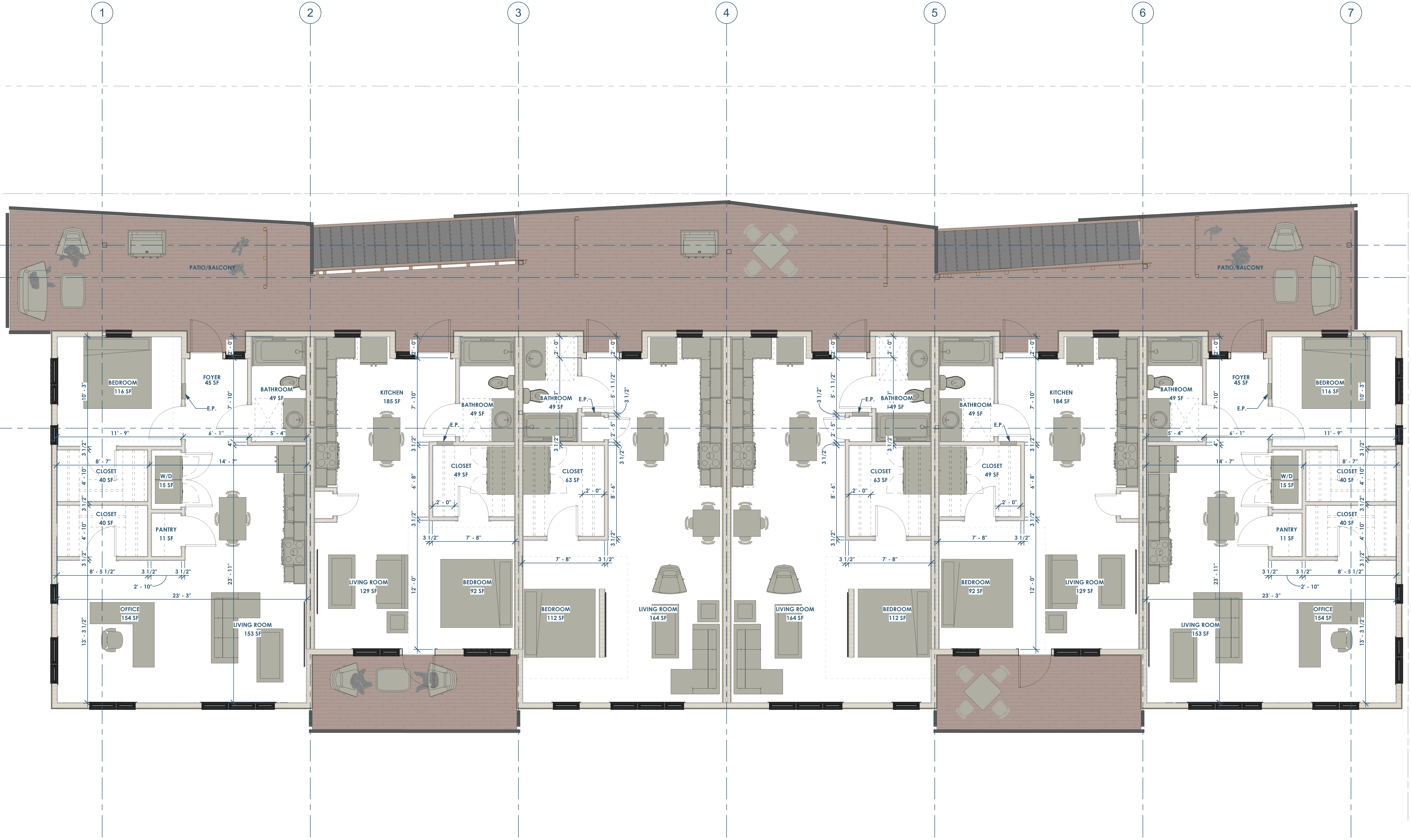
**RENOVATION**  
*Wranglers*  
ENGINEERS  
Owner: Renovation Wranglers  
102 E 26th St  
Bryan, TX 77803  
kate@renovations.com | 979.450.9969

**LKB**  
ARCHITECTURE  
Architect of Record: LKB Architecture  
2929 Allen Pkwy Suite 200  
Houston, TX 77019  
isa@lkbarchitecture.com | 713.425.3076

**DUDLEY**  
Structural: Dudley  
6102 Imperial Loop Drive  
College Station, TX 77845  
(979) 777-0720

**amc**  
ENGINEERS  
MEP: AMC Engineers  
508 E Jackson St # 552  
Burnet, TX 78611  
info@amcengineers.com

This project, like most OpeningDesign's projects, is open source (Attribution-ShareAlike 4.0 International-CC BY-SA 4.0)-freely available to any party for future use, assuming the terms such as Attribution and ShareAlike are honored.



**O1 - FLOOR PLAN - 3RD FLOOR**  
1/4" = 1'-0"

Date	Description
02.22.2022	Progress DD Set

RENOVATION  
Wranglers  
ENGINEERS  
Owner: Renovation Wranglers  
102 E 26th St  
Bryan, TX 77803  
kate@renovations.com | 979.450.9969

ARCHITECTURE  
Architect of Record: LKB Architecture  
2929 Allen Pkwy Suite 200  
Houston, TX 77019  
isa@lkbarchitecture.com | 713.425.3076

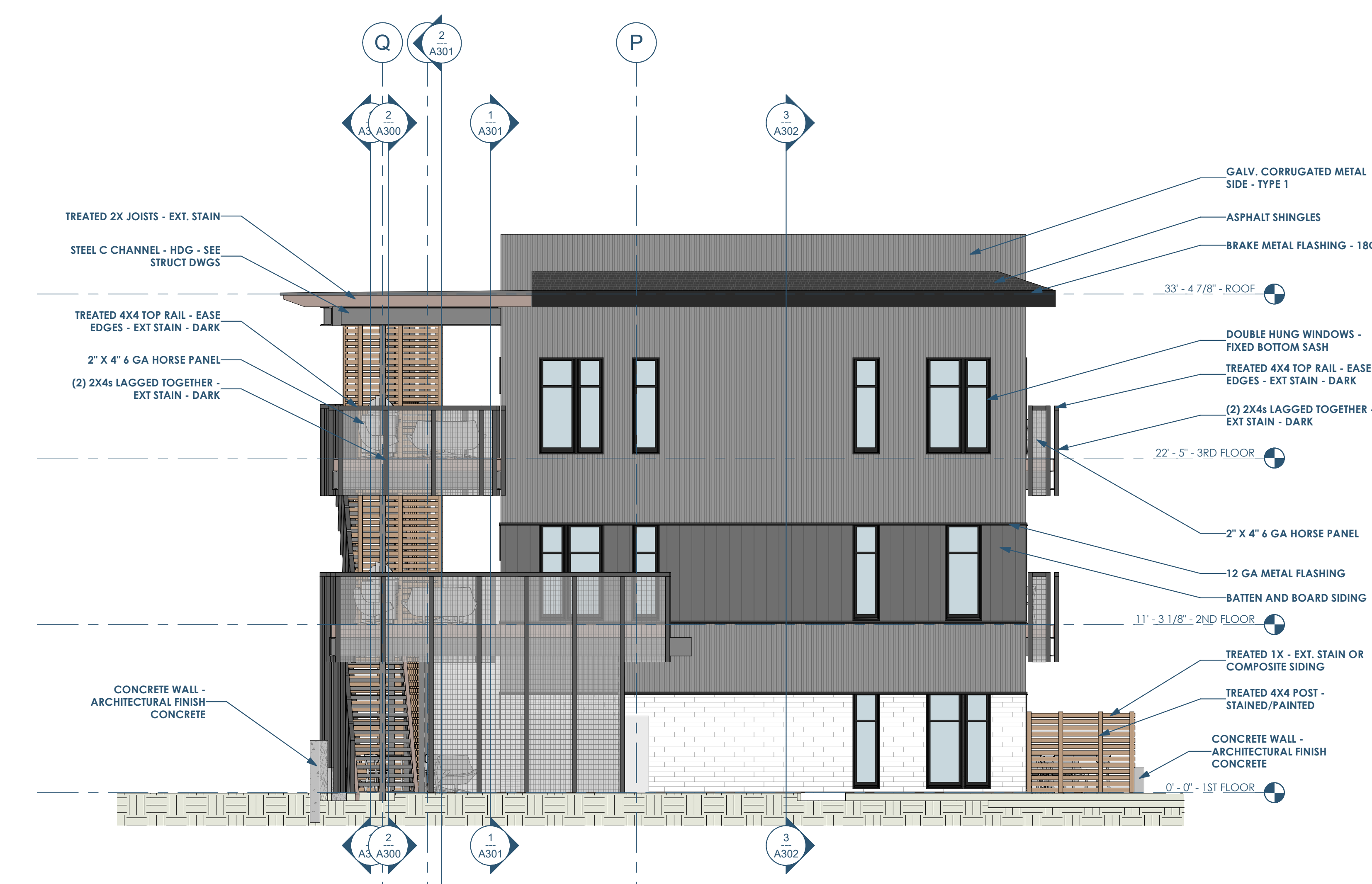
STRUCTURE  
DUDLEY  
Structural: Dudley  
4102 Imperial Loop Drive  
College Station, TX 77845  
(979) 777-0720

MEP: AMC ENGINEERS  
AMC ENGINEERS  
MEP: AMC Engineers  
508 E Jackson St # 552  
Burnet, TX 78611  
info@amcengineers.com

This project, like most OpeningDesign's projects, is open source (Attribution-ShareAlike 4.0 International-CC BY-SA 4.0)-freely available to any party for future use, assuming the terms such as Attribution and ShareAlike are honored.



1 A200 BUILDING ELEVATION - NORTH  
3/16" = 1'-0"



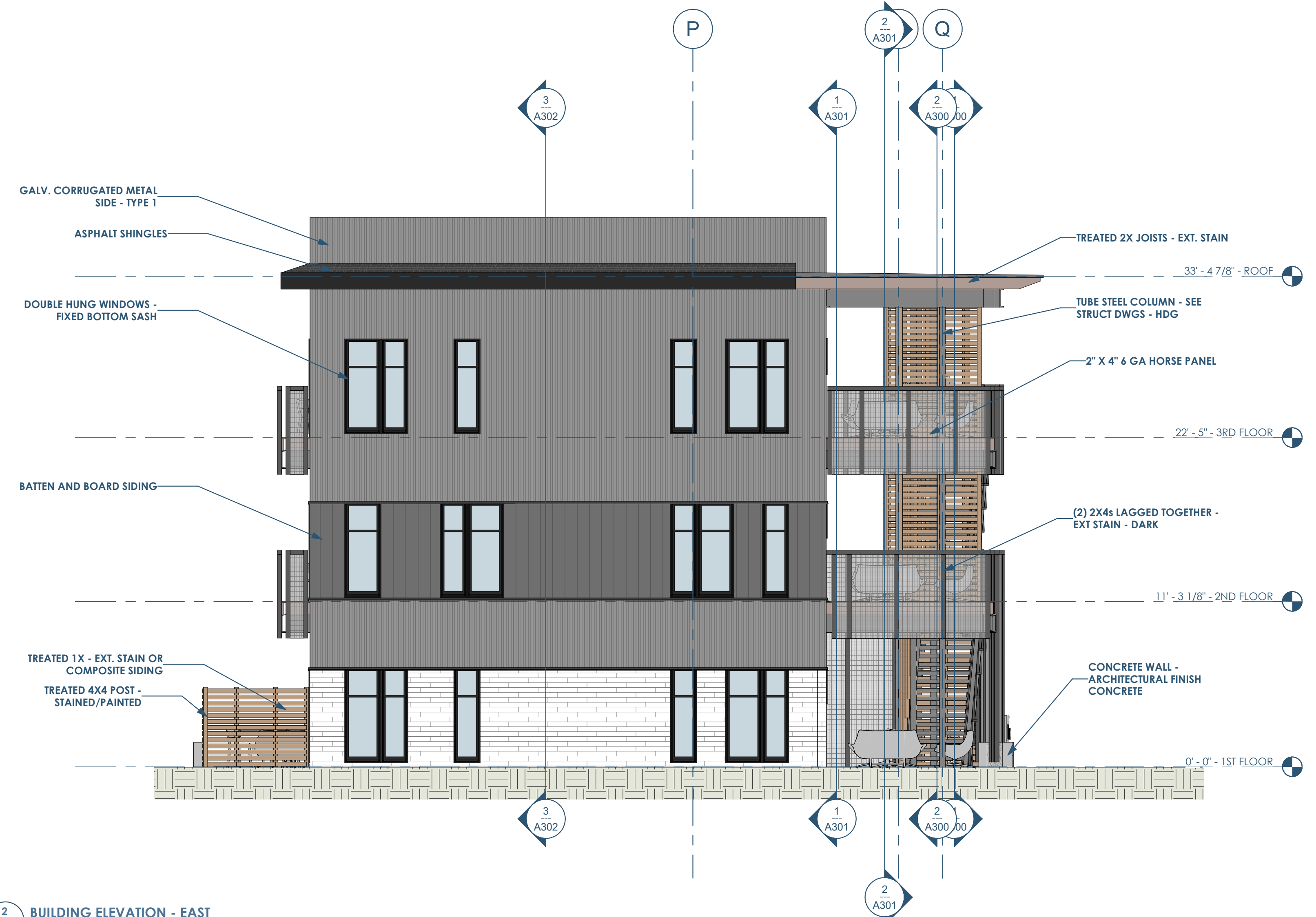
2 A200 BUILDING ELEVATION - WEST  
3/16" = 1'-0"

openingdesign  
Architect: OpeningDesign  
17 S Fairchild | FL 7  
Madison, WI 53703  
ryan@openingdesign.com | 773.425.6456

Date	Description
02.22.2022	Progress DD Set



1 BUILDING ELEVATION - SOUTH  
3/16" = 1'-0"



2 BUILDING ELEVATION - EAST  
3/16" = 1'-0"

**RENOVATION Wranglers**  
 Owner: Renovation Wranglers  
 102 E 26th St  
 Bryan, TX 77803  
 Katerneason@wranglers.com | 979.450.9969

**ARCHITECTURE**  
 Architect of Record: LKB Architecture  
 2929 Allen Pkwy Suite 200  
 Houston, TX 77019  
 isa@lkbarchitecture.com | 713.425.3076

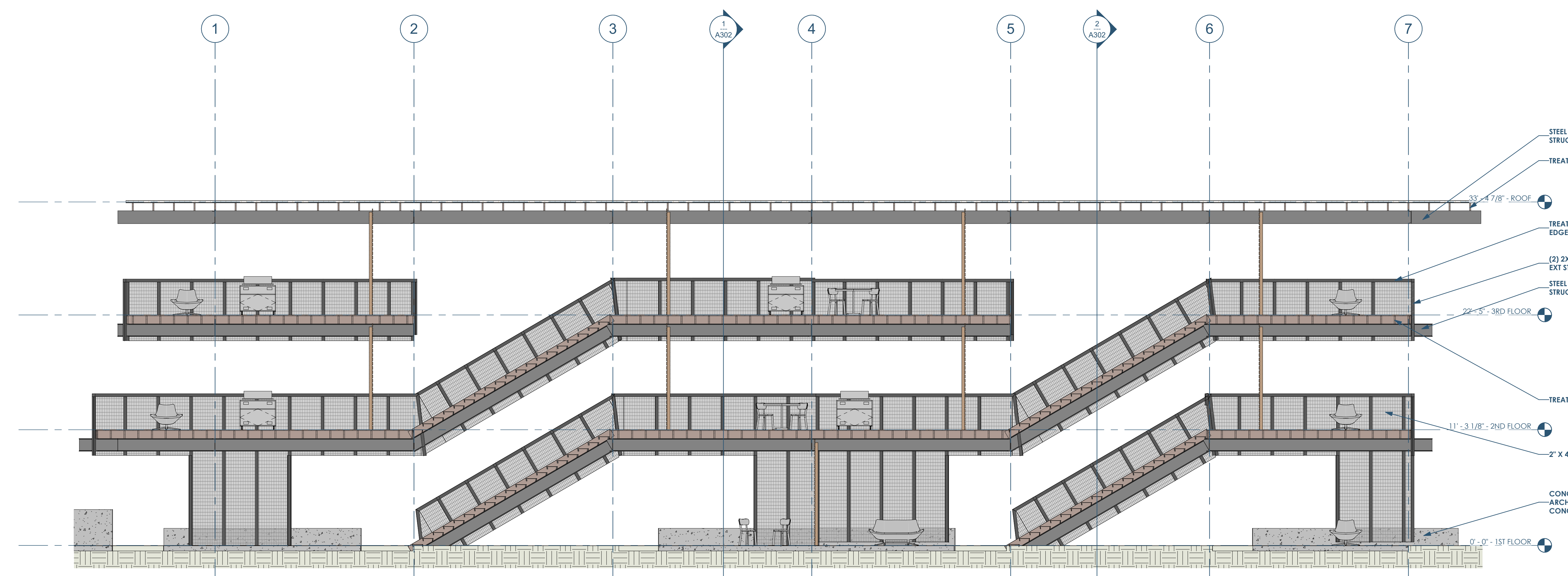
**DUDLEY**  
 Structural: Dudley  
 6102 Imperial Loop Drive  
 College Station, TX 77845  
 (979) 777-0720

**amc ENGINEERS**  
 MEP: AMC Engineers  
 508 E Jackson St # 552  
 Burnet, TX 78611  
 info@amcengineers.com

This project, like most OpeningDesign's projects, is open source (Attribution-ShareAlike 4.0 International-CC BY-SA 4.0) - freely available to any party for future use, assuming the terms such as Attribution and ShareAlike are honored.

**openingdesign**  
 Architect: OpeningDesign  
 17 S Fairchild | FL 7  
 Madison, WI 53703  
 ryan@openingdesign.com | 773.425.6456

Date	Description
02/22/2022	Progress DD Set



1 A300 BUILDING SECTION - THROUGH STAIRS - LOOKING NORTH  
 3/16" = 1'-0"



2 A300 BUILDING SECTION - THROUGH STAIRS - LOOKING SOUTH  
 3/16" = 1'-0"

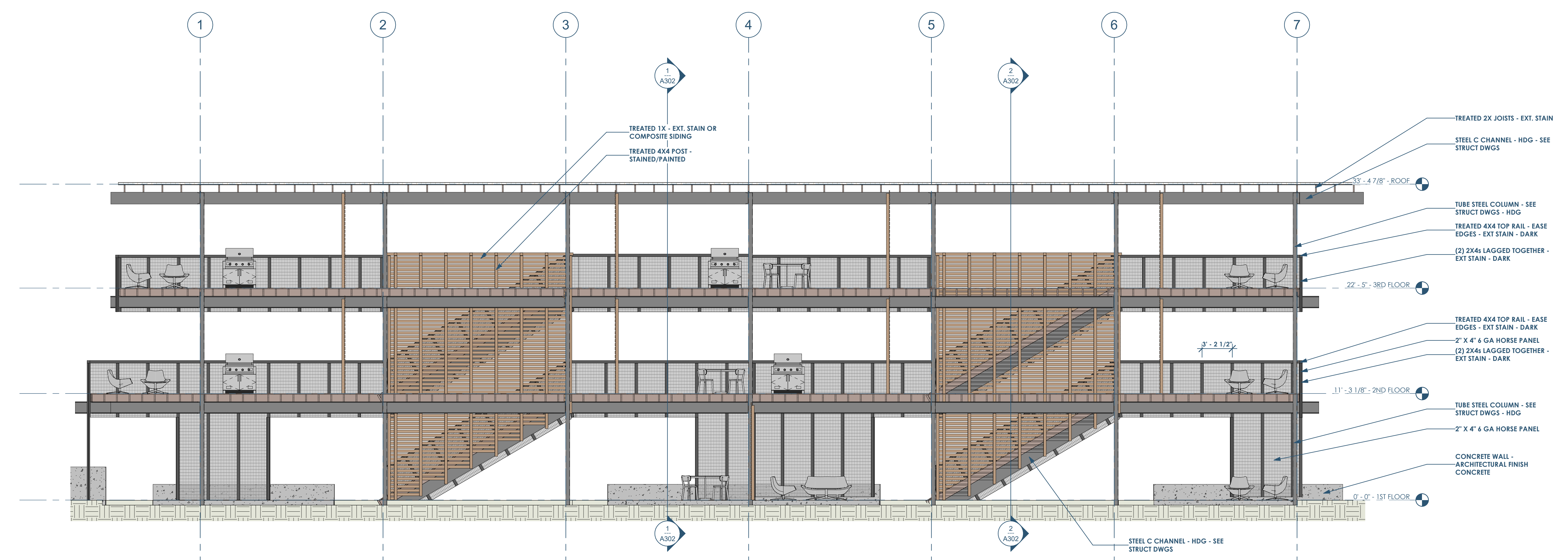
This project, like most OpeningDesign's projects, is open source (Attribution-ShareAlike 4.0 International-CC BY-SA 4.0)-freely available to any party for future use, assuming the terms such as Attribution and ShareAlike are honored.

Date	Description
02.22.2022	Progress DD Set

This project, like most OpeningDesign's projects, is open source (Attribution-ShareAlike 4.0 International-CC BY-SA 4.0)-freely available to any party for future use, assuming the terms such as Attribution and ShareAlike are honored.



1 A301 BUILDING SECTION - THRU BALCONY - LOOKING SOUTH  
3/16" = 1'-0"



2 A301 BUILDING SECTION - THRU BALCONY - LOOKING NORTH  
3/16" = 1'-0"

Date	Description
02.22.2022	Progress DD Set

**RENOVATION**  
Wranglers

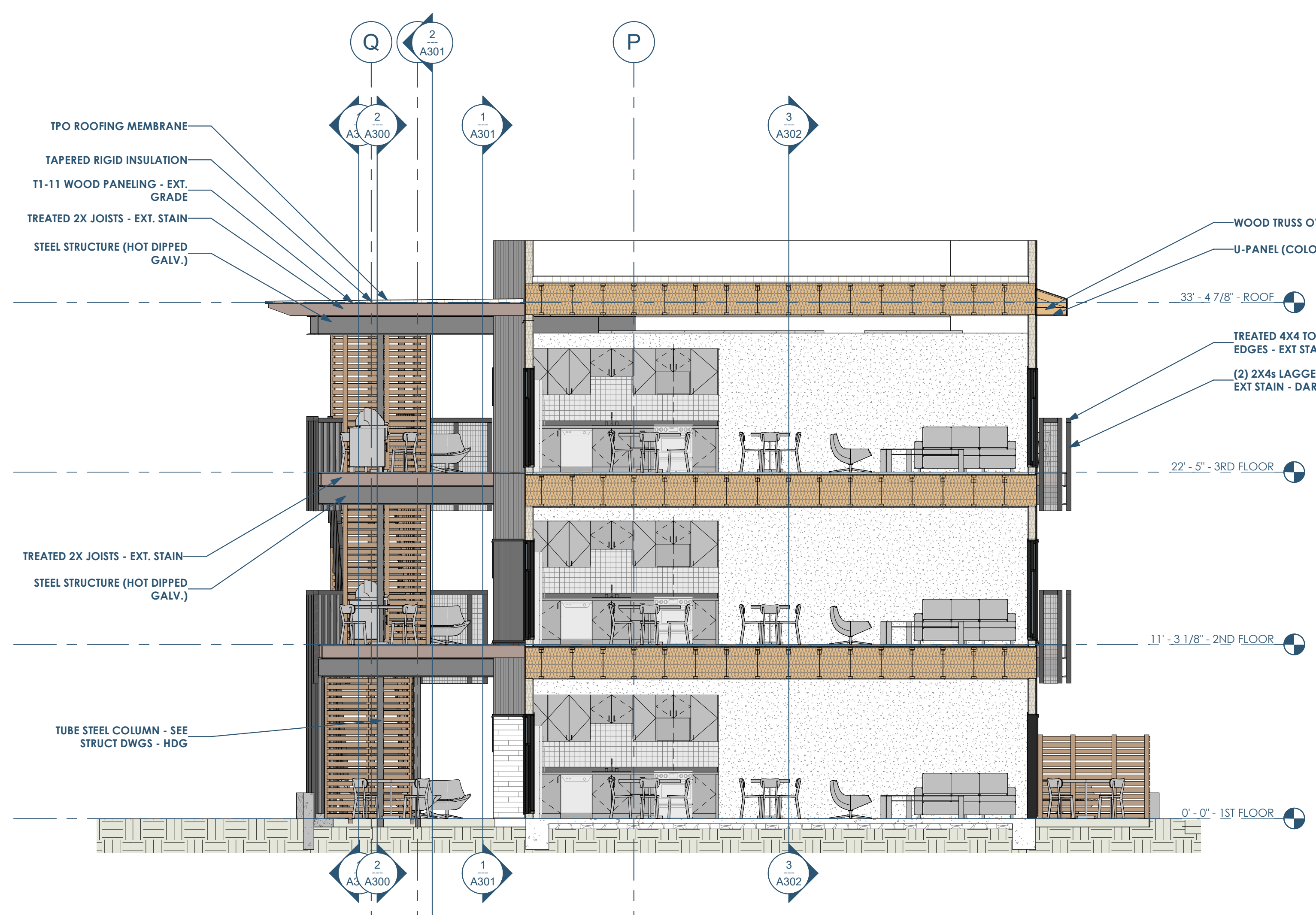
Owner: Renovation Wranglers  
102 E 26th St  
Bryan, TX 77803  
Kateneason@wranglers.com | 979.450.9969

**ARCHITECTURE**  
Architect of Record: LKB Architecture  
2929 Allen Pkwy Suite 200  
Houston, TX 77019  
isa@lkbarchitecture.com | 713.425.3076

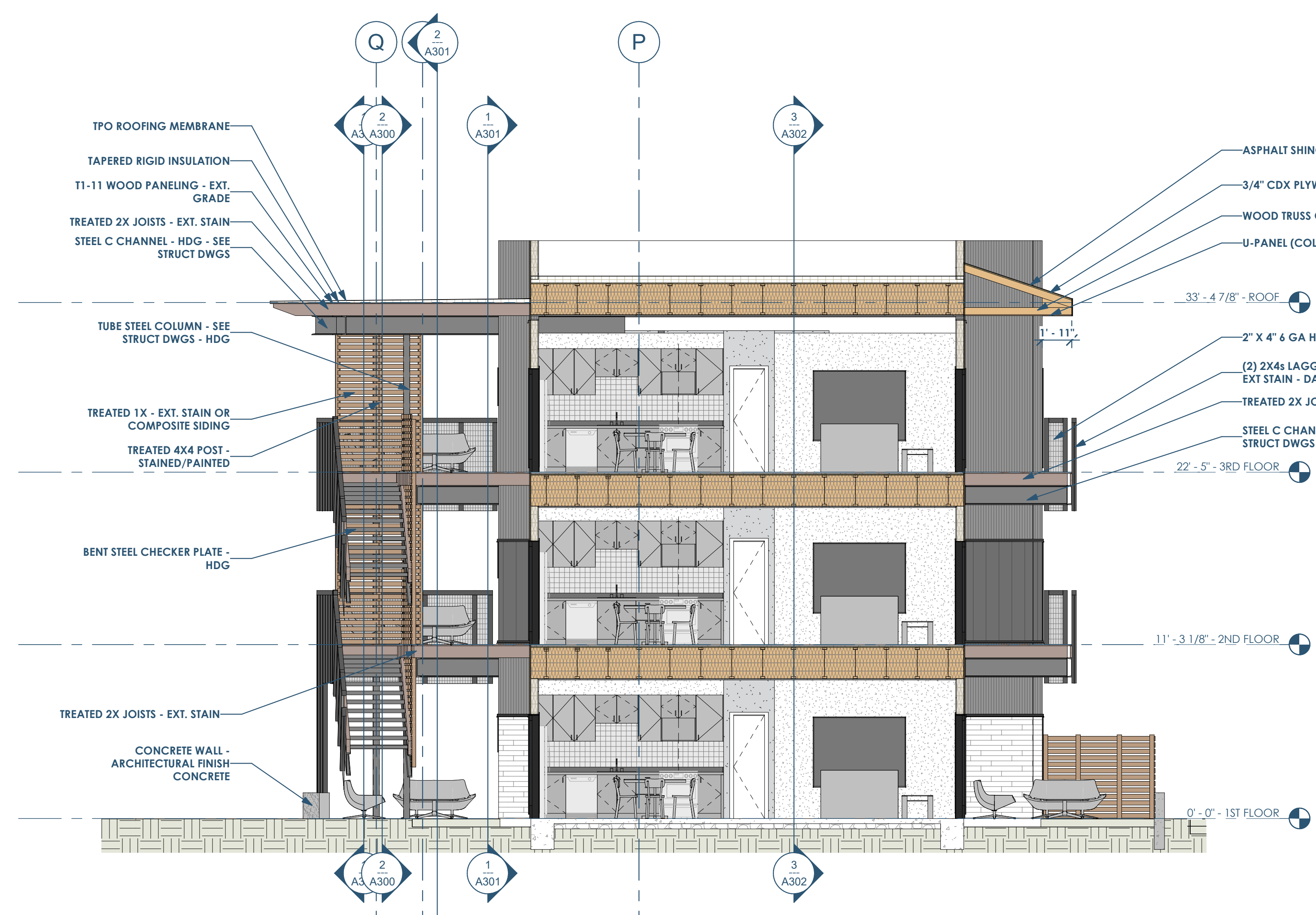
**DUDDLEY**  
Structural: Dudley  
4102 Imperial Loop Drive  
College Station, TX 77845  
(979) 777-0720

**amc**  
ENGINEERS  
MEP: AMC Engineers  
508 E Jackson St # 552  
Burnet, TX 78611  
info@amcengineers.com

This project, like most OpeningDesign's projects, is open source (Attribution-ShareAlike 4.0 International-CC BY-SA 4.0)-freely available to any party for future use, assuming the terms such as Attribution and ShareAlike are honored.



1 BUILDING SECTION - THRU LARGE STUDIO - LOOKING EAST  
3/16" = 1'-0"



2 BUILDING SECTION - THRU SMALL STUDIO - LOOKING EAST  
3/16" = 1'-0"



3 BUILDING SECTION - EAST/WEST - LOOKING SOUTH  
3/16" = 1'-0"

Date	Description
02.22.2022	Progress DD Set

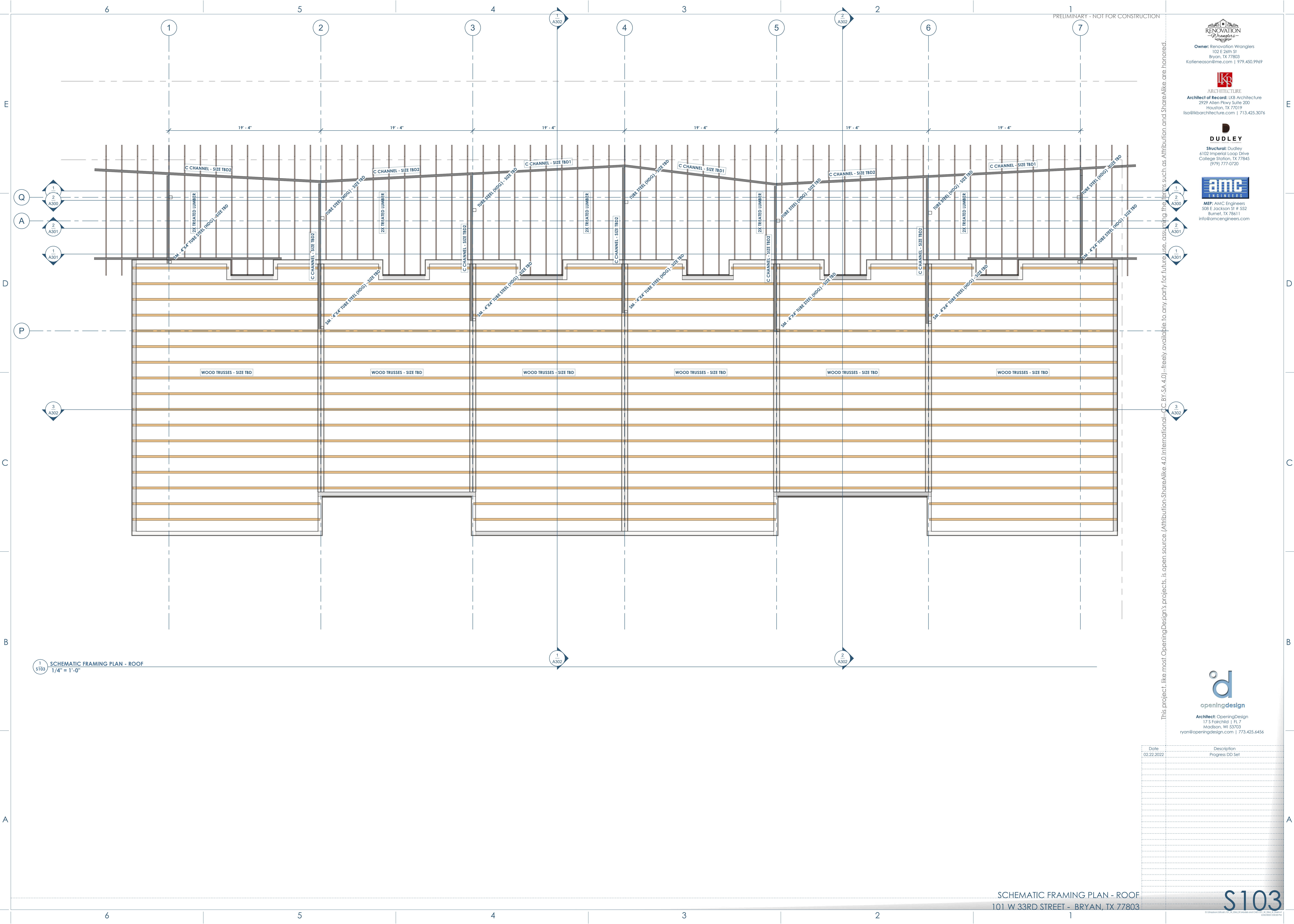




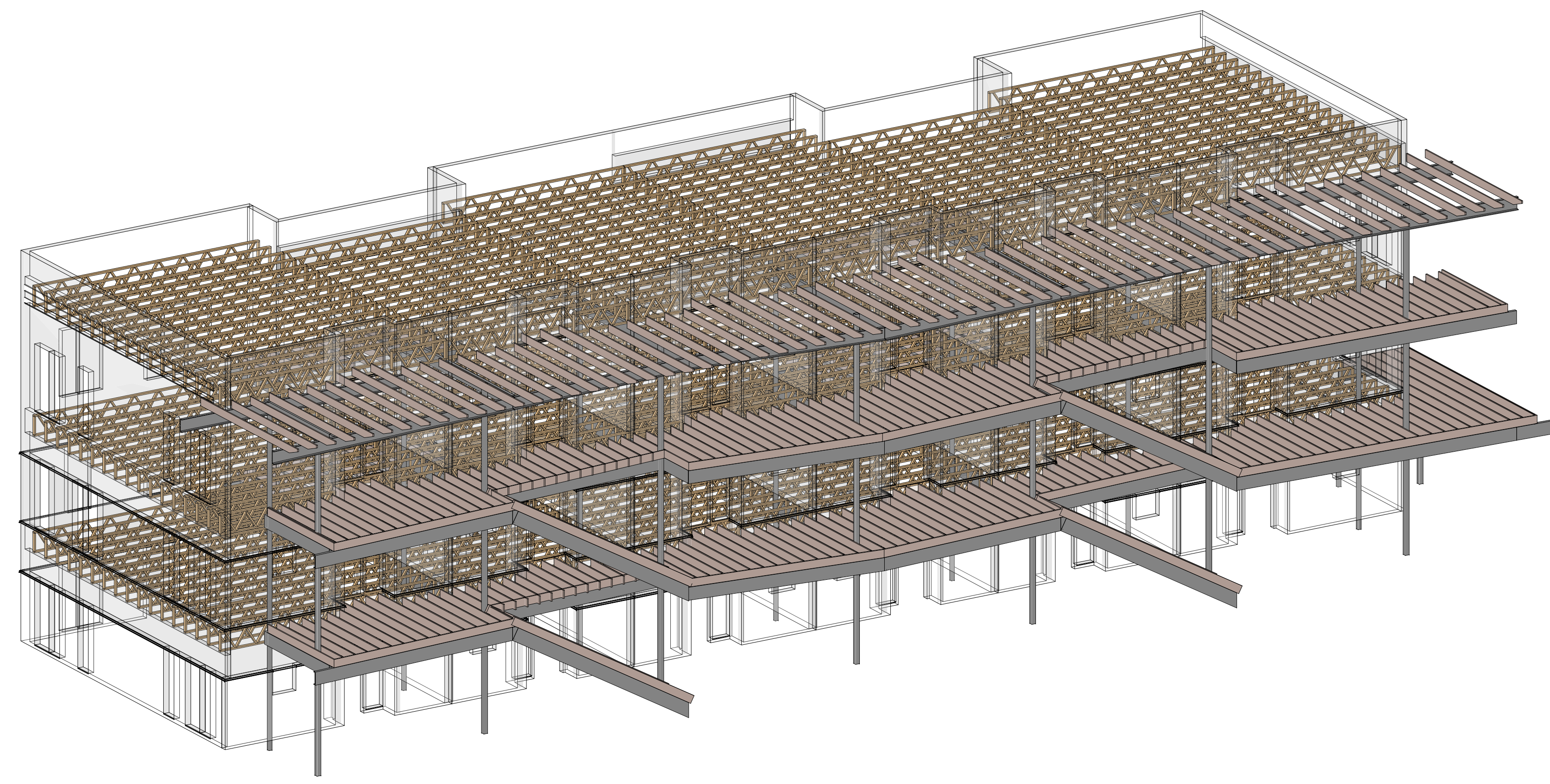




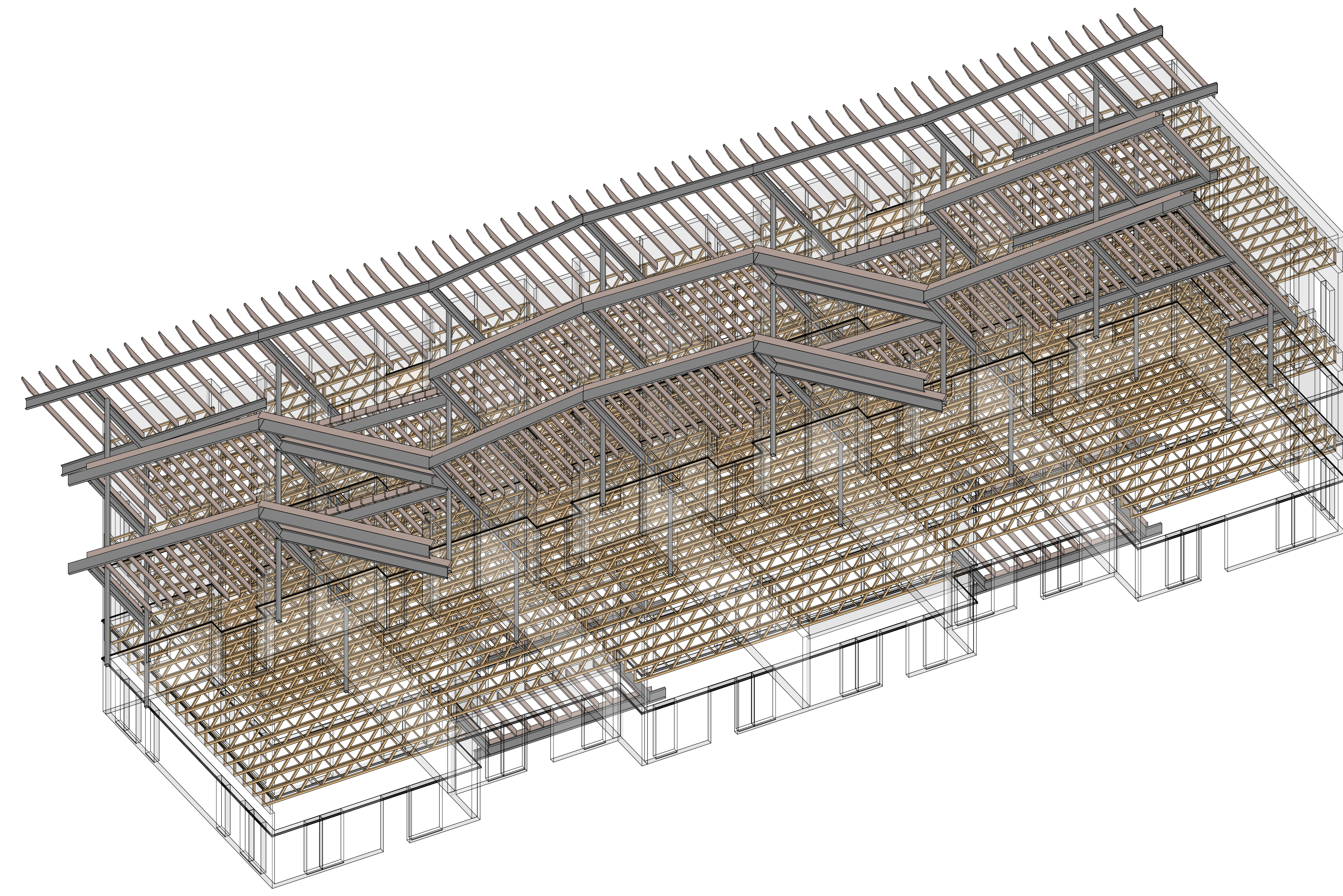
This project, like most OpeningDesign's projects, is open source (Attribution-ShareAlike 4.0 International - CC BY-SA 4.0) - freely available to any party for future use, assuming the terms such as Attribution and ShareAlike are honored.



1 S103 SCHEMATIC FRAMING PLAN - ROOF  
1/4" = 1'-0"



1 STRUCTURAL FRAMING - 3D - 1  
S900



2 STRUCTURAL FRAMING - 3D - 2  
S900

**RENOVATION Wranglers**  
Owner: Renovation Wranglers  
102 E 26th St  
Bryan, TX 77803  
kate@renovations.com | 979.450.9969

**LKB ARCHITECTURE**  
Architect of Record: LKB Architecture  
2929 Allen Pkwy Suite 200  
Houston, TX 77019  
isa@lkbarchitecture.com | 713.425.3076

**DUDLEY**  
Structural: Dudley  
6102 Imperial Loop Drive  
College Station, TX 77845  
(979) 777-0720

**amc ENGINEERS**  
MEP: AMC Engineers  
508 E Jackson St # 552  
Burnet, TX 78611  
info@amcengineers.com

This project, like most OpeningDesign's projects, is open source (Attribution-ShareAlike 4.0 International-CC BY-SA 4.0)—freely available to any party for future use, assuming the terms such as Attribution and ShareAlike are honored.

**openingdesign**  
Architect: OpeningDesign  
17 S Fairchild | FL 7  
Madison, WI 53703  
ryan@openingdesign.com | 773.425.6456

Date	Description
02.22.2022	Progress DD Set