

1
A101
O1 - FLOOR PLAN - 1ST FLOOR
3/16" = 1'-0"



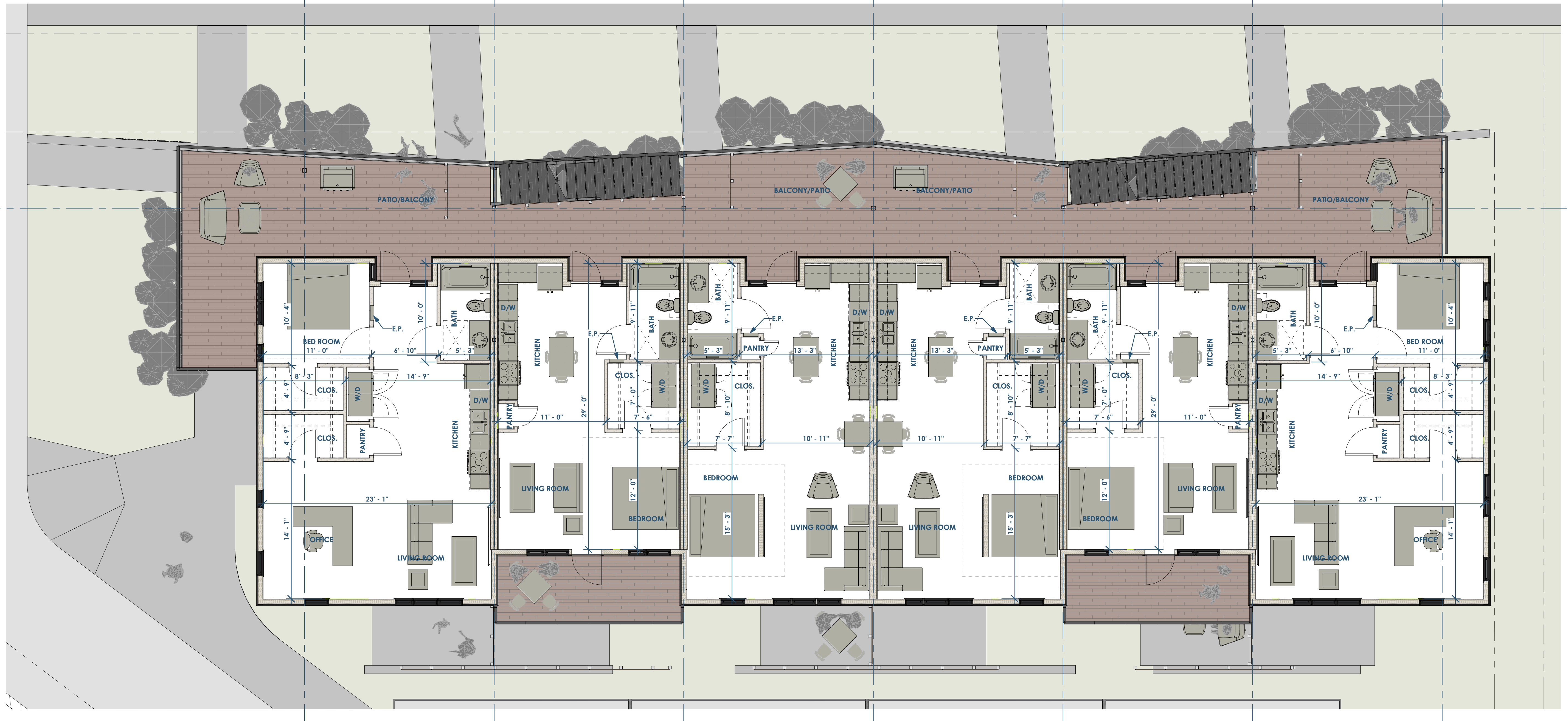
Owner: Ann Metzler
2291 Williams Point Dr.
Stoughton, WI
000-000-0000 | XXX@XXX.com

Architect: Ryan Schultz - Opening Design
17 S Fairchild St | Fl 7
Madison, WI 53703
ryan@openingdesign.com | 773.425.6456

FLOOR PLAN - 1ST - 02.07.2022
101 W 33RD STREET
BRYAN, TX 77803

A101

This project, like most Opening Design's projects, is open source. (Attribution-ShareAlike 4.0 International--CC BY-SA 4.0)--freely available to any party for future use, assuming the terms such as Attribution and ShareAlike are honored.



1
A102
O1 - FLOOR PLAN - 2ND FLOOR
3/16" = 1'-0"



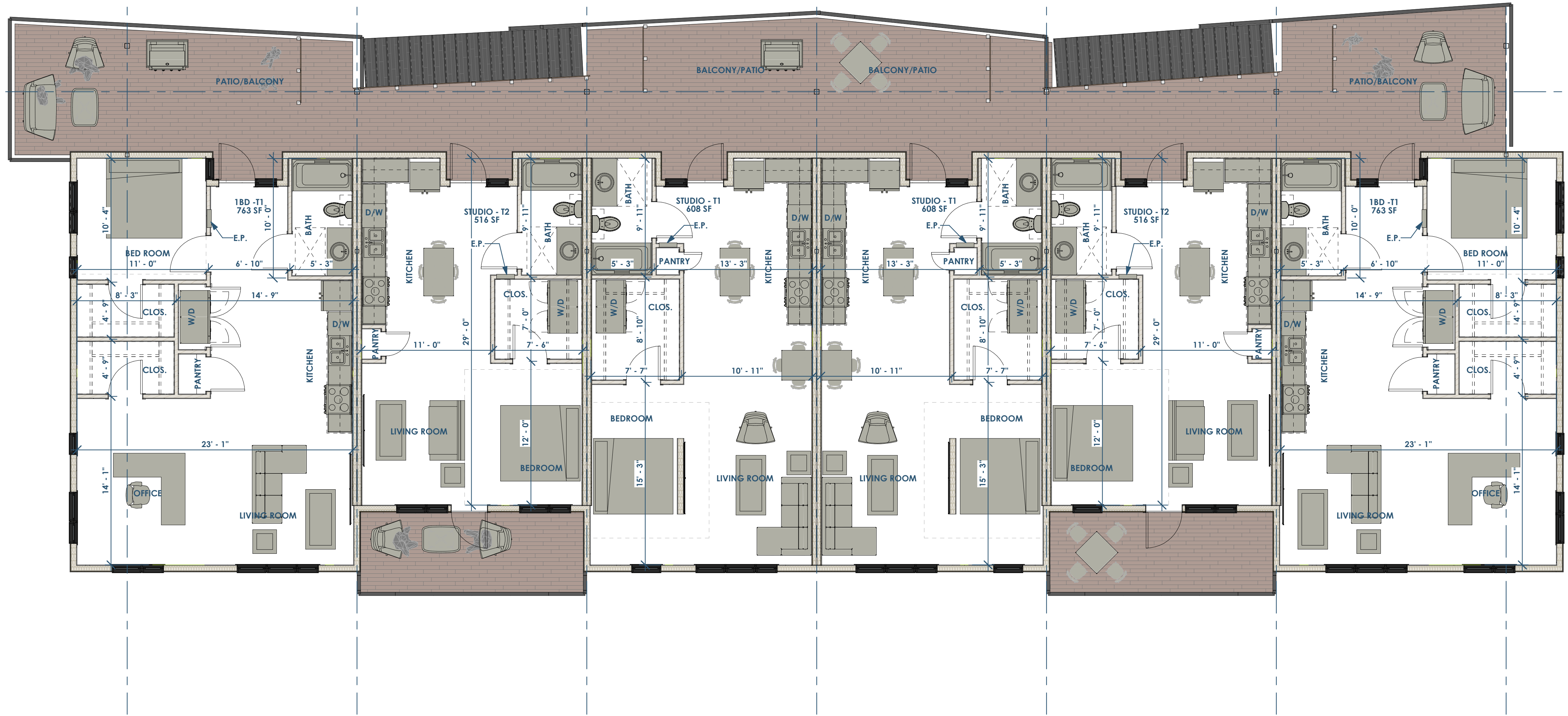
Owner: Ann Metzler
2291 Williams Point Dr.
Stoughton, WI
000-000-0000 | XXX@XXX.com

Architect: Ryan Schultz - OpeningDesign
17 S Fairchild St | Fl 7
Madison, WI 53703
ryan@openingdesign.com | 773.425.6456

FLOOR PLAN - 2ND - 02.07.2022
101 W 33RD STREET
BRYAN, TX 77803

A102

This project, like most OpeningDesign's projects, is open source. (Attribution-ShareAlike 4.0 International--CC BY-SA 4.0)--freely available to any party for future use, assuming the terms such as Attribution and ShareAlike are honored.



1
A103 O1 - FLOOR PLAN - 3RD FLOOR
3/16" = 1'-0"



Owner: Ann Metzler
2291 Williams Point Dr.
Stoughton, WI
000-000-0000 | XXX@XXX.com

Architect: Ryan Schultz - OpeningDesign
17 S Fairchild St | Fl 7
Madison, WI 53703
ryan@openingdesign.com | 773.425.6456

FLOOR PLAN - 3RD - 02.07.2022
101 W 33RD STREET
BRYAN, TX 77803

A103

This project, like most OpeningDesign's projects, is open source. (Attribution-ShareAlike 4.0 International--CC BY-SA 4.0)--freely available to any party for future use, assuming the terms such as Attribution and ShareAlike are honored.

5

4

3

2

1

NOT FOR CONSTRUCTION

C

B

A



1 BUILDING ELEVATION - NORTH
 Q1-A201 3/16" = 1'-0"



Owner: Renovation Wranglers
 102 E 26th St
 Bryan, TX 77803
 Kafeneason@me.com | 979.450.9969



Architect of Record: LKB Architecture
 2929 Allen Pkwy Suite 200
 Houston, TX 77019
 lisa@lkbarchitecture.com | 713.425.3076



Architect: Ryan Schultz - OpeningDesign
 17 S Fairchild St | Fl 7
 Madison, WI 53703
 ryan@openingdesign.com | 773.425.6456

BUILDING ELEVATION - NORTH - 02.07.2022

101 W 33RD STREET

BRYAN, TX 77803

Q1-A201

5

4

3

2

1

©\Desktop\Grlab\01_W_33rd_SPA\Model and CAD\01_W_33rd_SPA.dwg 2/7/2022 11:29:19 AM

This project, like most OpeningDesign's projects, is open source. (Attribution-ShareAlike 4.0 International) - CC BY-SA 4.0 - freely available to any party for future use, assuming the terms such as Attribution and ShareAlike are honored.

C

B

A



1 BUILDING ELEVATION - WEST
 Q1-A202 3/16" = 1'-0"



Owner: Renovation Wranglers
 102 E 26th St
 Bryan, TX 77803
 Kafieneason@me.com | 979.450.9969

Architect of Record: LKB Architecture
 2929 Allen Pkwy Suite 200
 Houston, TX 77019
 lisa@lkbarchitecture.com | 713.425.3076

Architect: Ryan Schultz - OpeningDesign
 17 S Fairchild St | Fl 7
 Madison, WI 53703
 ryan@openingdesign.com | 773.425.6456

BUILDING ELEVATION - WEST - 02.07.2022
 101 W 33RD STREET
 BRYAN, TX 77803

Q1-A202

This project, like most OpeningDesign's projects, is open source. (Attribution-ShareAlike 4.0 International) - CC BY-SA 4.0 - freely available to any party for future use, assuming the terms such as Attribution and ShareAlike are honored.

5

4

3

2

1

NOT FOR CONSTRUCTION

C

B

A



1 BUILDING ELEVATION - SOUTH
 Q1-A203 3/16" = 1'-0"



Owner: Renovation Wranglers
 102 E 26th St
 Bryan, TX 77803
 Kafeneason@me.com | 979.450.9969

Architect of Record: LKB Architecture
 2929 Allen Pkwy Suite 200
 Houston, TX 77019
 lisa@lkbarchitecture.com | 713.425.3076

Architect: Ryan Schultz - OpeningDesign
 17 S Fairchild St | Fl 7
 Madison, WI 53703
 ryan@openingdesign.com | 773.425.6456

BUILDING ELEVATION - SOUTH - 02.07.2022

101 W 33RD STREET
 BRYAN, TX 77803

Q1-A203

5

4

3

2

1

This project, like most OpeningDesign's projects, is open source. (Attribution-ShareAlike 4.0 International-CC BY-SA 4.0)-freely available to any party for future use, assuming the terms such as Attribution and ShareAlike are honored.

5

4

3

2

1

NOT FOR CONSTRUCTION

C

B

A



1 BUILDING ELEVATION - EAST
 Q1-A204 3/16" = 1'-0"



Owner: Renovation Wranglers
 102 E 26th St
 Bryan, TX 77803
 Kafieneason@me.com | 979.450.9969



ARCHITECTURE

Architect of Record: LKB Architecture
 2929 Allen Pkwy Suite 200
 Houston, TX 77019
 lisa@lkbarchitecture.com | 713.425.3076



Architect: Ryan Schultz - OpeningDesign
 17 S Fairchild St | Fl 7
 Madison, WI 53703
 ryan@openingdesign.com | 773.425.6456

BUILDING ELEVATION - EAST - 02.07.2022

101 W 33RD STREET

BRYAN, TX 77803

Q1-A204

5

4

3

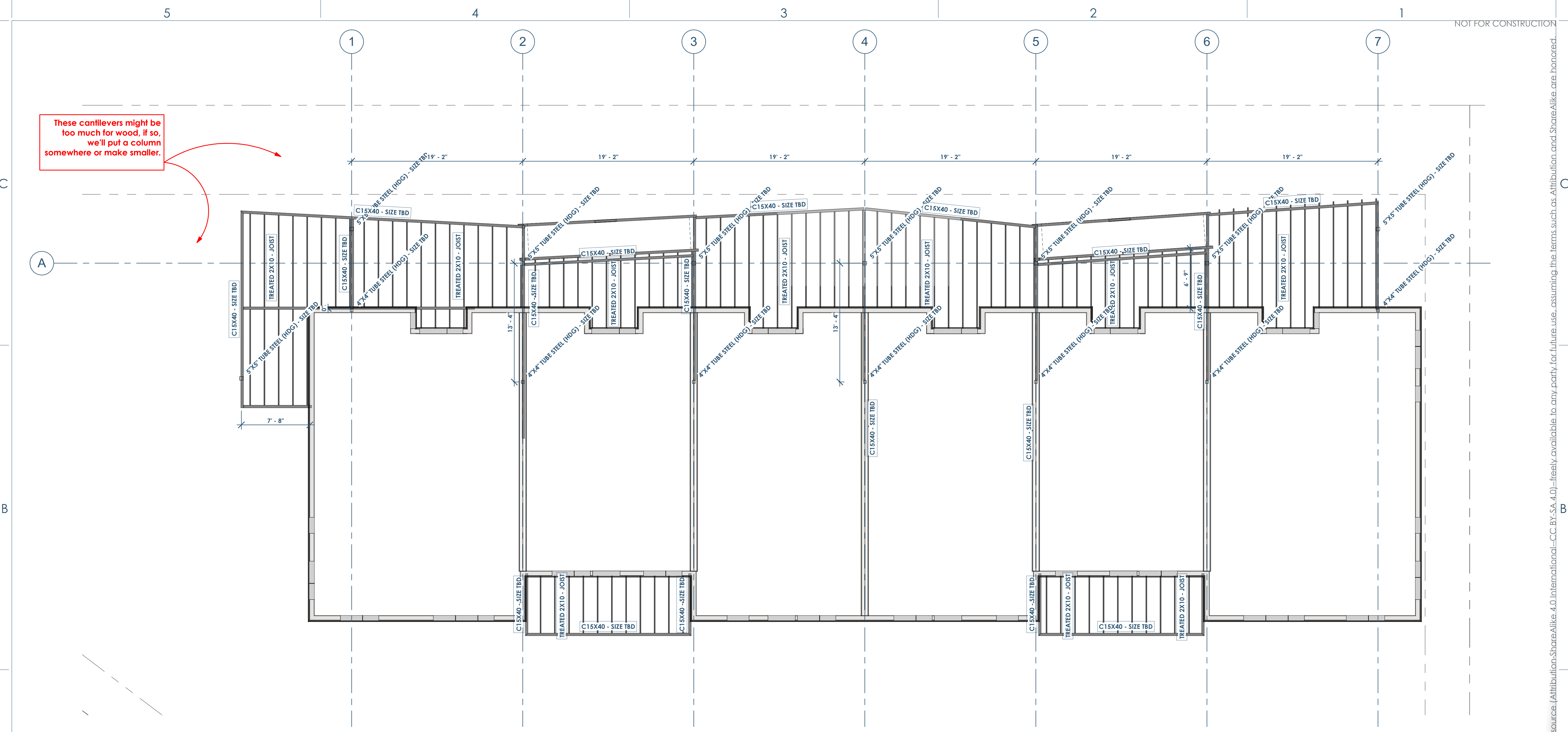
2

1

©\Desktop\Grlab\101_W_33rd_S\Models and CAD\01_01_W_33rd_S_Sheet.rvt 2/7/2022 11:25:39 AM

This project, like most OpeningDesign's projects, is open source. (Attribution-ShareAlike 4.0 International--CC BY-SA 4.0)--freely available to any party for future use, assuming the terms such as Attribution and ShareAlike are honored.

These cantilevers might be too much for wood, if so, we'll put a column somewhere or make smaller.



1 ST01 SCHEMATIC FRAMING PLAN - 2ND FLOOR
3/16" = 1'-0"



Owner: Renovation Wranglers
102 E 26th St
Bryan, TX 77803
katieneason@me.com | 979.450.9969

Architect of Record: LKB Architecture
2929 Allen Pkwy Suite 200
Houston, TX 77019
lisa@lkbarchitecture.com | 713.425.3076

Architect: Ryan Schultz - OpeningDesign
17 S Fairchild St | Fl 7
Madison, WI 53703
ryan@openingdesign.com | 773.425.6456

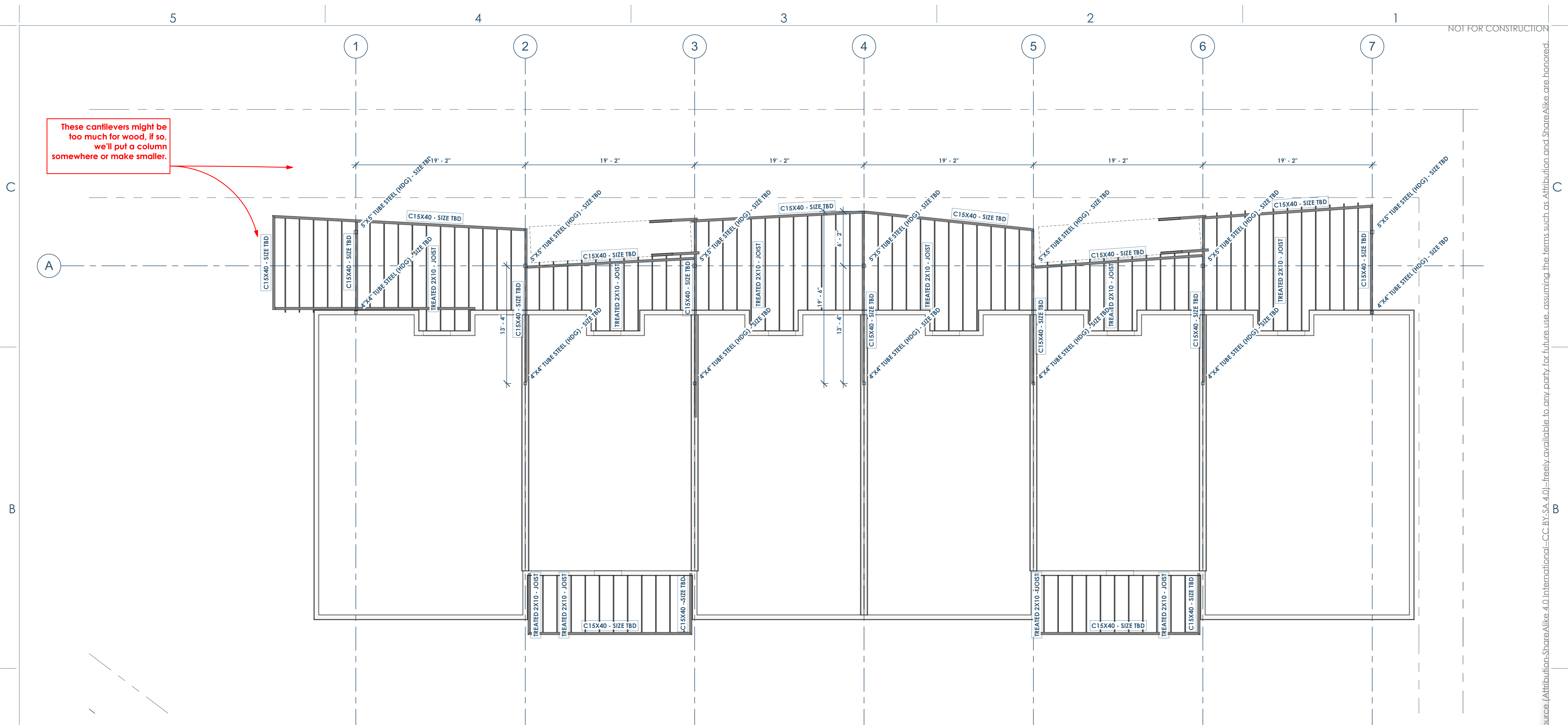
SCHEMATIC FRAMING PLAN - 2ND FLOOR - 02.07.2022

101 W 33RD STREET
BRYAN, TX 77803

S101

This project, like most OpeningDesign's projects, is open source. (Attribution-ShareAlike 4.0 International) - CC BY-SA 4.0 - freely available to any party for future use, assuming the terms such as Attribution and ShareAlike are honored.

These cantilevers might be too much for wood, if so, we'll put a column somewhere or make smaller.



1 S102 SCHEMATIC FRAMING PLAN - 3RD FLOOR
3/16" = 1'-0"



Owner: Renovation Wranglers
102 E 26th St
Bryan, TX 77803
katieneason@me.com | 979.450.9969

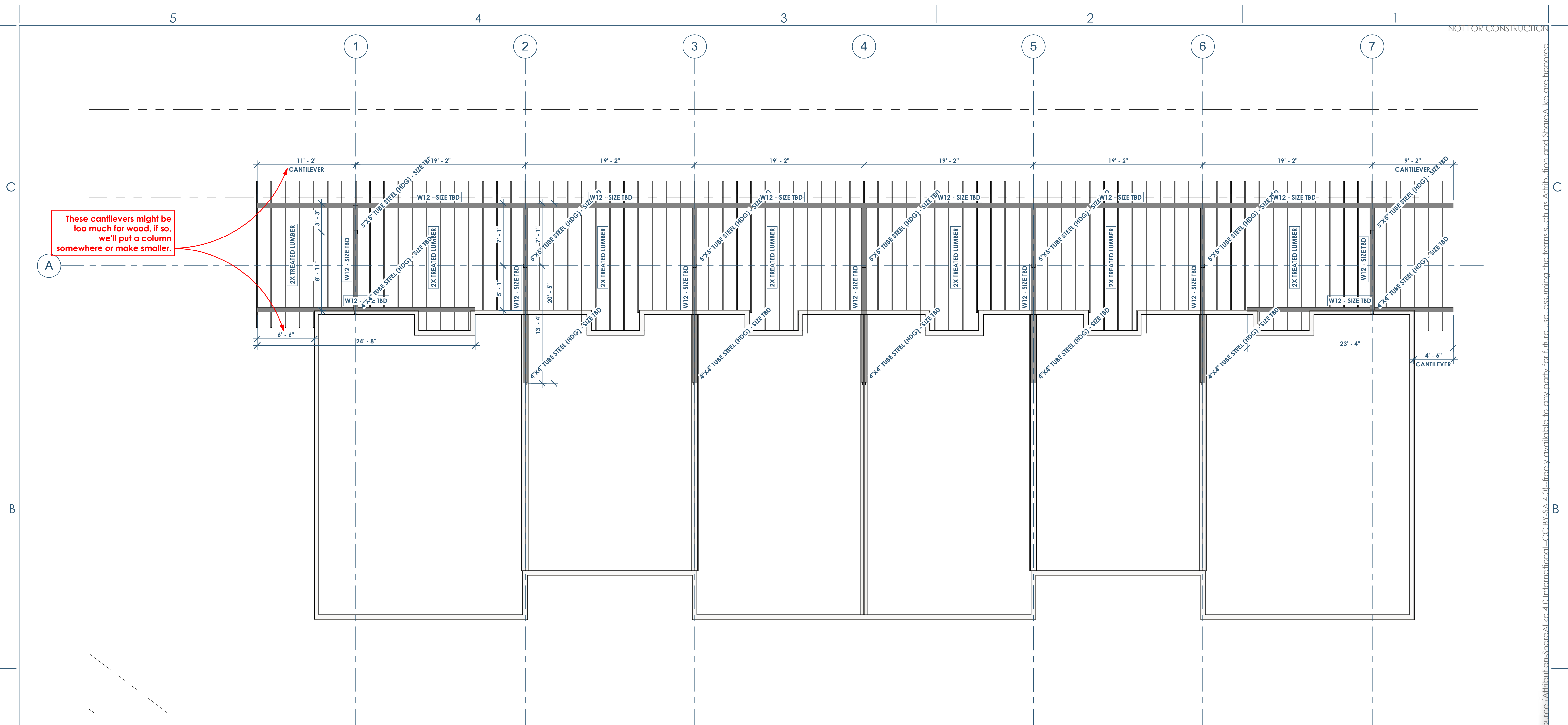
Architect of Record: LKB Architecture
2929 Allen Pkwy Suite 200
Houston, TX 77019
lisa@lkbarchitecture.com | 713.425.3076

Architect: Ryan Schultz - OpeningDesign
17 S Fairchild St | Fl 7
Madison, WI 53703
ryan@openingdesign.com | 773.425.6456

SCHEMATIC FRAMING PLAN - 3RD FLOOR - 02.07.2022
101 W 33RD STREET
BRYAN, TX 77803

S102

This project, like most OpeningDesign's projects, is open source. (Attribution-ShareAlike 4.0 International) - CC BY-SA 4.0 - freely available to any party for future use, assuming the terms such as Attribution and ShareAlike are honored.



1
S103
SCHEMATIC FRAMING PLAN - ROOF
3/16" = 1'-0"



Owner: Renovation Wranglers
102 E 26th St
Bryan, TX 77803
katieneason@me.com | 979.450.9969



Architect of Record: LKB Architecture
2929 Allen Pkwy Suite 200
Houston, TX 77019
lisa@lkbarchitecture.com | 713.425.3076



Architect: Ryan Schultz - Opening Design
17 S Fairchild St | Fl 7
Madison, WI 53703
ryan@openingdesign.com | 773.425.6456

SCHEMATIC FRAMING PLAN - ROOF - 02.07.2022

101 W 33RD STREET
BRYAN, TX 77803

S103

This project, like most OpeningDesign's projects, is open source. (Attribution-ShareAlike 4.0 International) - CC BY-SA 4.0 - freely available to any party for future use, assuming the terms such as Attribution and ShareAlike are honored.