

XHEZ.F-C-3012 - Through-penetration Firestop Systems

Design/System/Construction/Assembly Usage Disclaimer

- Authorities Having Jurisdiction should be consulted in all cases as to the particular requirements covering the installation and use of UL Certified products, equipment, system, devices, and materials.
- Authorities Having Jurisdiction should be consulted before construction.
- Fire resistance assemblies and products are developed by the design submitter and have been investigated by UL for compliance with applicable requirements. The published information cannot always address every construction nuance encountered in the field.
- When field issues arise, it is recommended the first contact for assistance be the technical service staff provided by the product manufacturer noted for the design. Users of fire resistance assemblies are advised to consult the general Guide Information for each product category and each group of assemblies. The Guide Information includes specifics concerning alternate materials and alternate methods of construction.
- Only products which bear UL's Mark are considered Certified.

XHEZ - Through-penetration Firestop Systems

XHEZ7 - Through-penetration Firestop Systems Certified for Canada

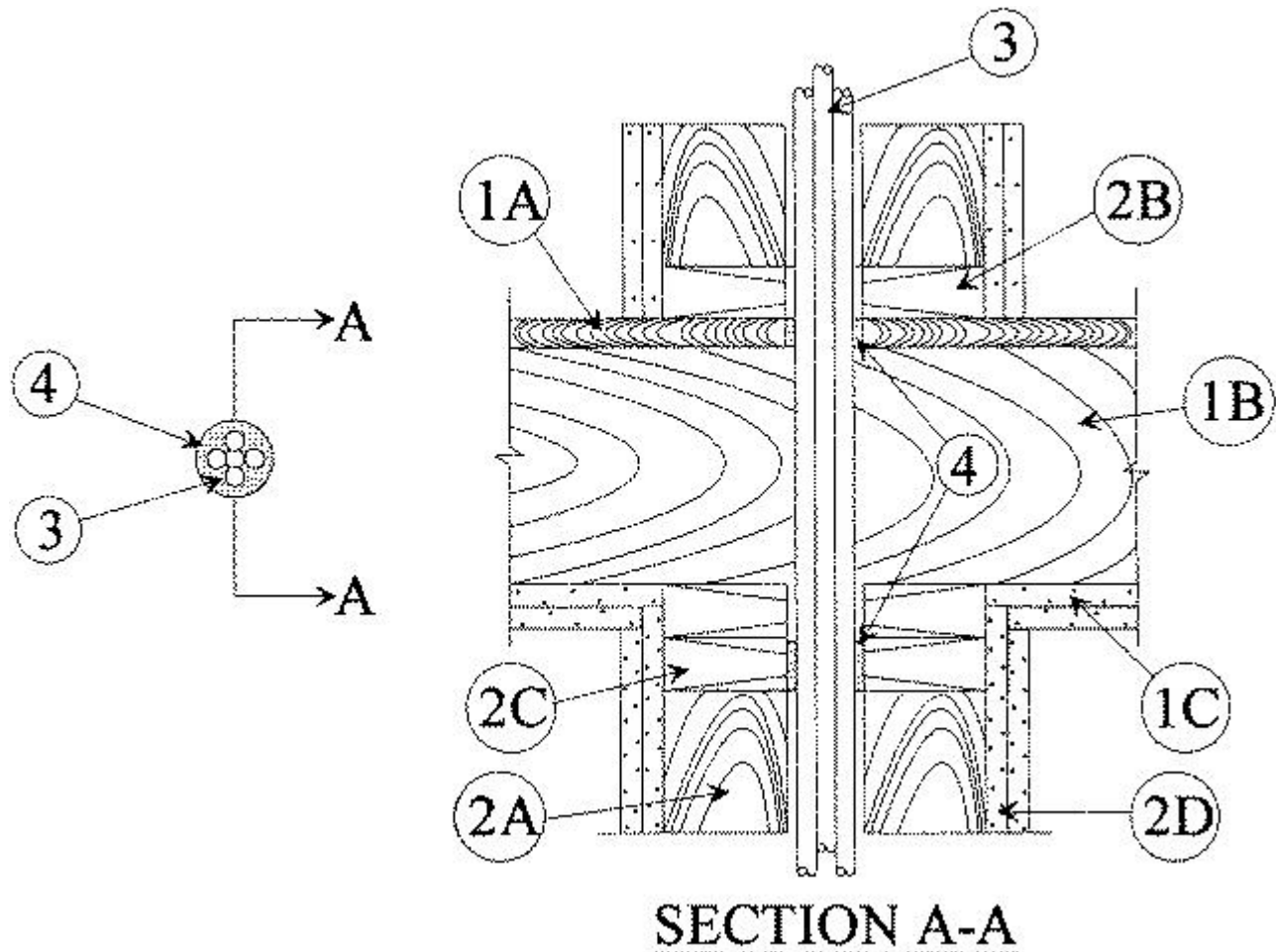
[See General Information for Through-penetration Firestop Systems](#)

[See General Information for Through-penetration Firestop Systems Certified for Canada](#)

System No. F-C-3012

April 06, 2018

ANSI/UL1479 (ASTM E814)	CAN/ULC S115
F Ratings — 1 and 2 Hr (See Item 1)	F Ratings — 1 and 2 Hr (See Item 1)
T Ratings — 0, 1 and 1-3/4 Hr (See Item 3)	FT Ratings — 0, 1 and 1-3/4 Hr (See Item 3)
	FH Ratings — 1 and 2 Hr (See Item 1)
	FTH Ratings — 0, 1 and 1-3/4 Hr (See Item 3)



1. Floor-Ceiling Assembly — The 1 or 2 hr fire-rated solid or trussed lumber joist floor-ceiling assembly shall be constructed of the materials and in the manner specified in the individual L500 Series Floor-Ceiling Designs in the UL Fire Resistance Directory. The general construction features of the floor-ceiling assembly are summarized below:

A. **Flooring System** — Lumber or plywood subfloor with finish floor of lumber, plywood or **Floor Topping Mixture*** as specified in the individual Floor-Ceiling Design. Max diam of opening for 1 or 2 hr assembly is 2-1/2 in. (64 mm) or 2 in. (51 mm), respectively.

B. **Wood Joists*** — Nom 10 in. (254 mm) deep (or deeper) lumber, steel or combination lumber and steel joists, trusses or **Structural Wood Members*** with bridging as required and with ends firestopped.

C. **Furring Channels** — (Not Shown) — (As required) - Resilient galvanized steel furring installed in accordance with the manner specified in the individual L500 Series Designs in the Fire Resistance Directory.

D. **Gypsum Board*** — Thickness, type, number of layers and fasteners shall be as specified in the individual Floor-Ceiling Design. Max diam of opening for 1 or 2 hr assembly is 2-1/2 in. (64 mm) or 2 in. (51 mm), respectively.

The F Rating of the firestop system is equal to the rating of the floor-ceiling assembly.

2. Chase Wall — (Optional) - The through penetrant (Item 3) may be routed through a fire-rated or non-rated single, double or staggered wood stud/gypsum wallboard chase wall. The chase wall shall be constructed to include the following construction features:

A. **Studs** — Nom 2 by 6 in. (51 by 152 mm) or double nom 2 by 4 in. (51 by 102 mm) lumber studs.

B. **Sole Plate** — Nom 2 by 6 in. (51 by 152 mm) or parallel 2 by 4 in. (51 by 102 mm) lumber plates, tightly butted. Max diam of opening for 1 or 2 hr rated assembly is 2-1/2 in. (64 mm) or 2 in. (51 mm), respectively.

C. **Top Plate** — The double top plate shall consist of two nom 2 by 6 in. (51 by 152 mm) or two sets of parallel 2 by 4 in. (51 by 102 mm) lumber plates, tightly butted. Max diam of opening for 1 or 2 hr rated assembly is 2-1/2 in. (64 mm)

or 2 in. (51 mm), respectively.

D. **Gypsum Board*** — One or two layers of min 1/2 in. (13 mm) gypsum board.

3. **Cables** — In 1 hr fire-rated assemblies, aggregate cross-sectional area of cables in opening to be max 45 percent of the cross-sectional area of the opening (max 2 in. (51 mm) diam bundle). Cables to be rigidly supported on both sides of floor assembly. Any combination of the following types and sizes of copper conductors may be used:

A. RG 59 coaxial cable with single copper conductor, cellular polyethylene cellular foam insulation and polyvinyl chloride (PVC) jacket.

B. Max 8/C No. 22 AWG telephone cable with polyvinyl chloride (PVC) jacketing.

C. Max 2/C No. 12 AWG cable with polyvinyl chloride (PVC) insulation and jacketing.

D. Max 3/C with ground No. 2/0 AWG aluminum or copper Type SER cable with polyvinyl chloride (PVC) insulation.

E. Max 3/C with ground No. 2/0 AWG Type NM cable with polyvinyl chloride (PVC) insulation.

F. Max 3/C No. 12 AWG MC (BX) cable with polyvinyl chloride (PVC) insulation.

G. Max 1 in. diam metal clad TEK cable with PVC jacket.

H. Max 4/C with ground No. 300 kcmil (or smaller) aluminum SER cable with PVC insulation and jacket.

I. **Through Penetrating Product*** - Any cables, **Metal-Clad Cable+** or **Armored Cable+** currently Classified under the **Through Penetrating Products** category.

See **Through Penetrating Product** (XHLY) category in the Fire Resistance Directory for names of manufacturers.

The T Rating is 1 and 1-3/4 hr for 1 and 2 hr rated assemblies, respectively, for cables 3A through 3G. The T Rating is 0 hr for cables 3H and 3I.

4. **Fill, Void or Cavity Material* — Sealant** — Min 3/4 in. (19 mm) thickness of fill material applied within the annulus, flush with top surface of floor or sole plate. Min 5/8 in. (16 mm) thickness of fill material also applied within the annulus, flush with bottom surface of ceiling or lower top plate.

HILTI CONSTRUCTION CHEMICALS, DIV OF HILTI INC — FS611A Sealant or FS-One Sealant or FS-ONE MAX Intumescent Sealant

*** Indicates such products shall bear the UL or cUL Certification Mark for jurisdictions employing the UL or cUL Certification (such as Canada), respectively.**

Last Updated on 2018-04-06

The appearance of a company's name or product in this database does not in itself assure that products so identified have been manufactured under UL's Follow-Up Service. Only those products bearing the UL Mark should be considered to be Certified and covered under UL's Follow-Up Service. Always look for the Mark on the product.

UL permits the reproduction of the material contained in the Online Certification Directory subject to the following conditions: 1. The Guide Information, Assemblies, Constructions, Designs, Systems, and/or Certifications (files) must be presented in their entirety and in a non-misleading manner, without any manipulation of the data (or drawings). 2. The statement "Reprinted from the Online Certifications Directory with permission from UL" must appear adjacent to the extracted material. In addition, the reprinted material must include a copyright notice in the following format: "© 2022 UL LLC"