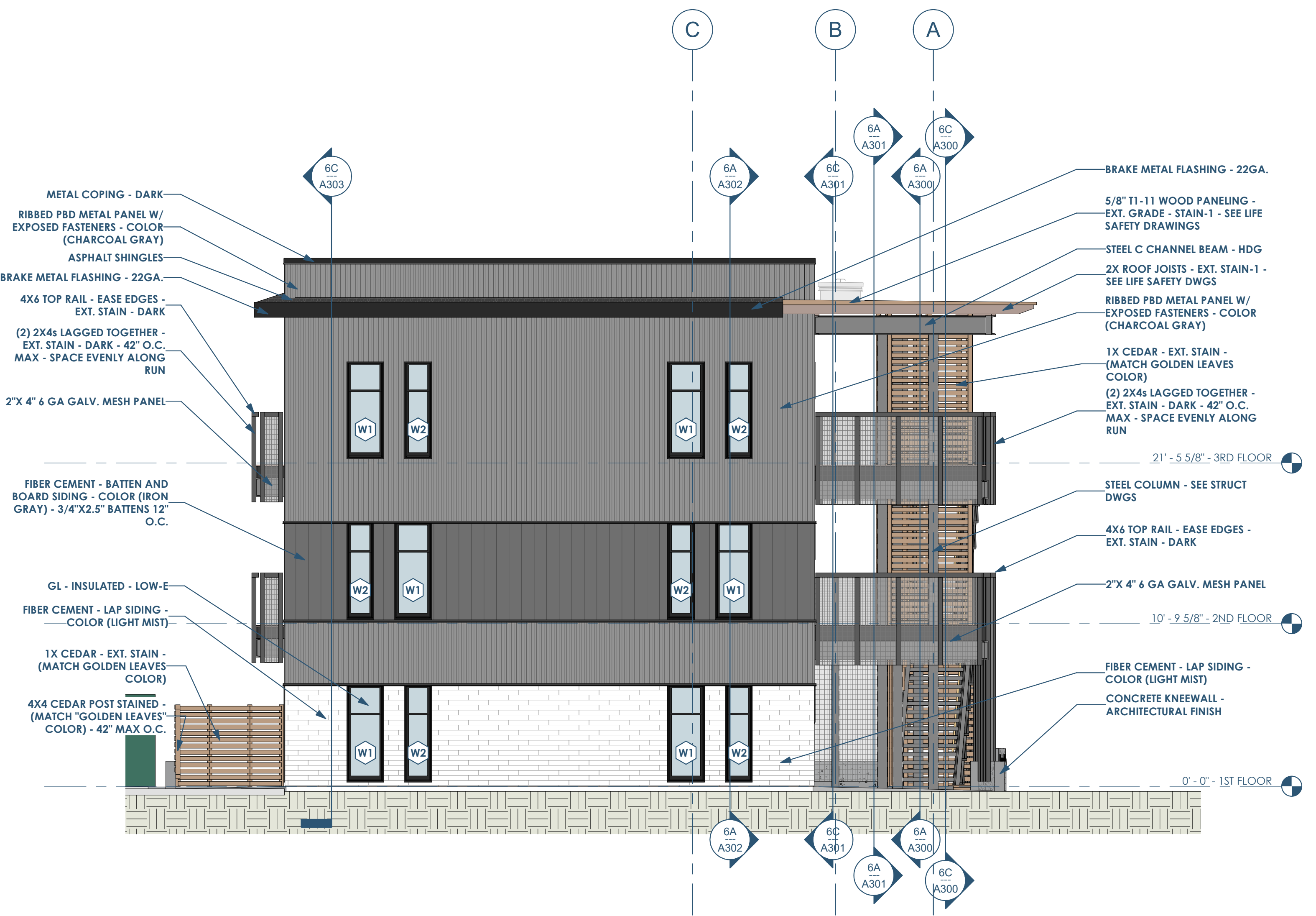


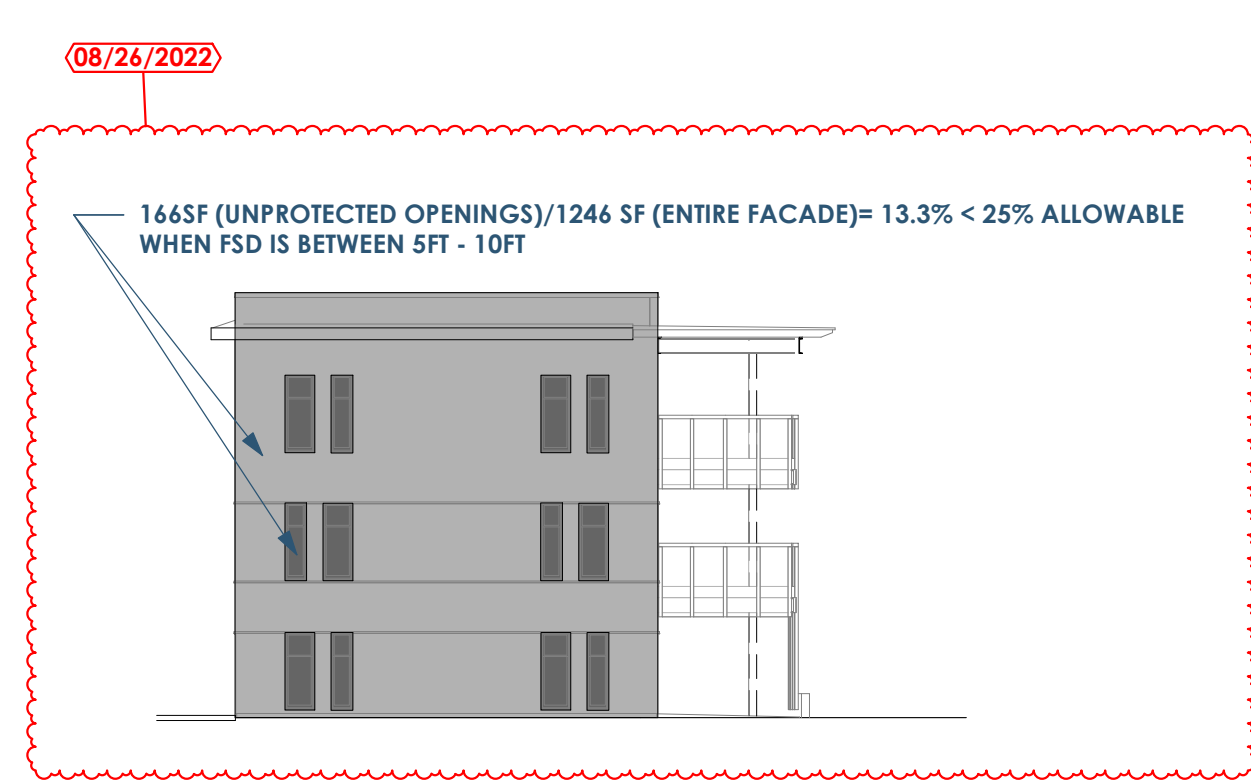


6C A201 BUILDING ELEVATION - SOUTH
3/16" = 1'-0"

SIMPLIFIED WINDOW SCHEDULE					
TYPE MARK	TYPE	COUNT	WIDTH	HEIGHT	TYPE COMMENTS
W1	SINGLE HUNG - TYPE 2	33	2' - 5 5/8"	6' - 4 7/8"	
W11	SINGLE HUNG - TYPE 2 - TEMPERED	13	2' - 5 5/8"	6' - 4 7/8"	TEMPERED GLAZING
W2	SINGLE HUNG - TYPE 1	28	1' - 9 5/8"	6' - 4 7/8"	TEMPERED GLAZING
W21	SINGLE HUNG - TYPE 1 - TEMPERED	3	1' - 9 5/8"	6' - 4 7/8"	TEMPERED GLAZING
W3	FIXED PICTURE - TYPE 1	18	2' - 5 1/2"	2' - 5 1/2"	
W4	CASEMENT - TYPE 1	1	2' - 5 5/8"	4' - 7"	ADA REACH REQUIREMENTS FOR TYPE A UNITS
W5	FIXED PICTURE - TYPE 2	1	2' - 5 5/8"	1' - 10"	



6A A201 BUILDING ELEVATION - EAST
3/16" = 1'-0"



2B A201 DIAGRAMMATIC ELEVATION - EAST
1/16" = 1'-0"

Renovation Wranglers
 Owner: Renovation Wranglers
 102 E 26th St
 Bryan, TX 77803
 kate@renovationwranglers.com | 979.450.9969

LKB ARCHITECTURE
 Architect of Record: LKB Architecture
 2929 Allen Pkwy Suite 200
 Houston, TX 77019
 isa@lkbarchitecture.com | 713.425.3076

DUDDLEY ARCHITECTURE
 Structural: Dudley
 Firm # 18677
 6102 Imperial Loop Drive
 College Station, TX 77845
 corieka@dudleyeng.com | (979) 777-0720

AMC ENGINEERS
 MEP: AMC Engineers
 Texas Firm #9441
 508 E Jackson St # 552
 Burnet, TX 78611
 info@amcengineers.com | 512.535.6427

REGISTERED ARCHITECT
 LISA B. BIXLER
 22039
 STATE OF TEXAS
 Lisa B. Bixler
 8.26.22

This project, like most OpeningDesign's projects, is open source. (Attribution-ShareAlike 4.0 International-CC BY-SA 4.0)-freely available to any party for future use, assuming the terms such as Attribution and ShareAlike are honored.

openingdesign
 Architect: OpeningDesign
 17 S Fairchild | FL 7
 Madison, WI 53703
 ryan@openingdesign.com | 773.425.6456

Date	Description
04/10/2022	Issued for Permit
08/26/2022	Permit Revisions