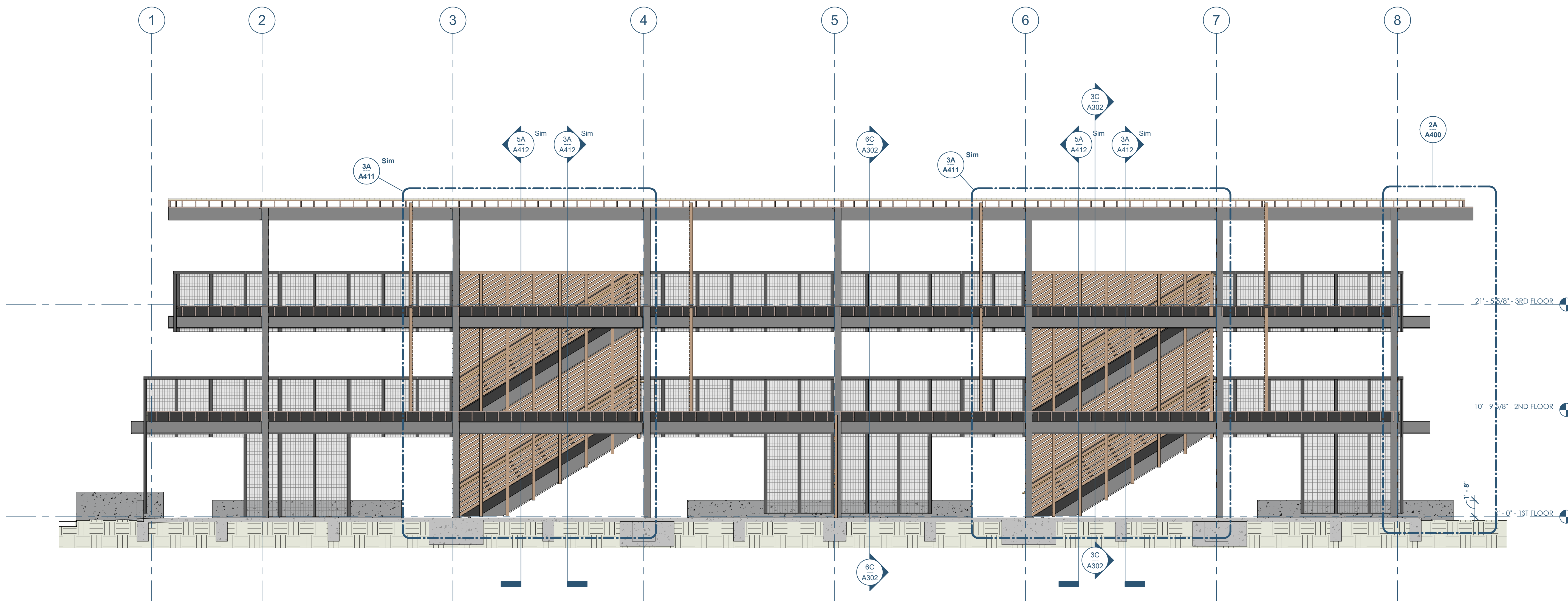




6C A301 BUILDING SECTION - THRU BALCONY - LOOKING SOUTH  
3/16" = 1'-0"



6A A301 BUILDING SECTION - THRU BALCONY - LOOKING NORTH  
3/16" = 1'-0"

Owner: Renovation Wranglers  
102 E 26th St  
Bryan, TX 77803  
Kateneas@rwr.com | 979.450.9969

ARCHITECTURE  
Architect of Record: LKB Architecture  
2929 Allen Pkwy Suite 200  
Houston, TX 77019  
isa@lkbarchitecture.com | 713.425.3076

STRUCTURAL: DUDLEY  
Firm # 18677  
6102 Imperial Loop Drive  
College Station, TX 77845  
corieka@dudleyeng.com | (979) 777-0720

MEP: AMC ENGINEERS  
Texas Firm #9441  
508 E Jackson St # 552  
Burnet, TX 78611  
info@amcengineers.com | 512.535.6427



*Lisa B. Bixler*  
8.26.22

This project, like most OpeningDesign's projects, is open source (Attribution-ShareAlike 4.0 International-CC BY-SA 4.0)-freely available to any party for future use, assuming the terms such as Attribution and ShareAlike are honored.

openingdesign  
Architect: OpeningDesign  
17 S Fairchild | FL 7  
Madison, WI 53703  
ryan@openingdesign.com | 773.425.6456

Date	Description
04/10/2022	Issued for Permit
08/26/2022	Permit Revisions