

RENOVATION
Wranglers
Engineers

Owner: Renovation Wranglers
102 E 26th St
Bryan, TX 77803
Kateneason@rwe.com | 979.450.9969

LKB
ARCHITECTURE

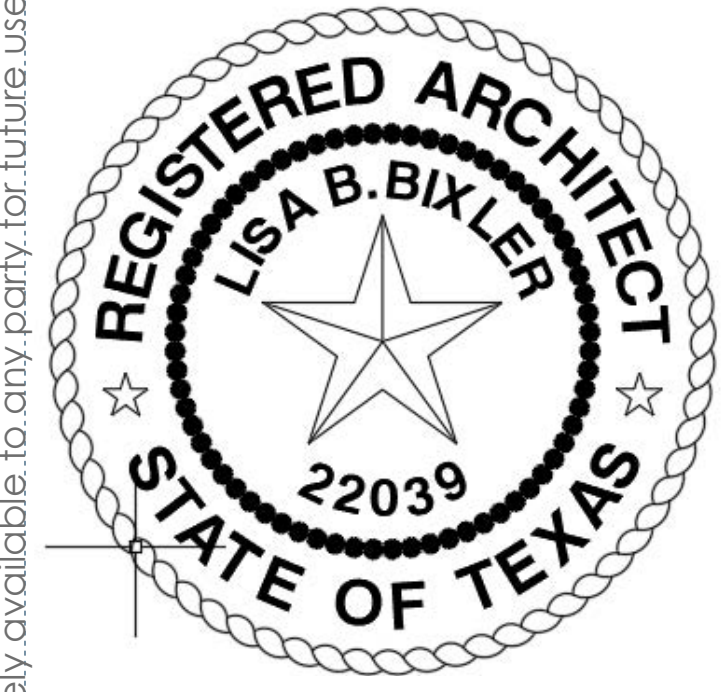
Architect of Record: LKB Architecture
2929 Allen Pkwy Suite 200
Houston, TX 77019
isa@lkbarchitecture.com | 713.425.3076

DUDLEY

Structural: Dudley
Firm# 18677
6102 Imperial Loop Drive
College Station, TX 77845
coofeka@dudleyeng.com | (979) 777-0720

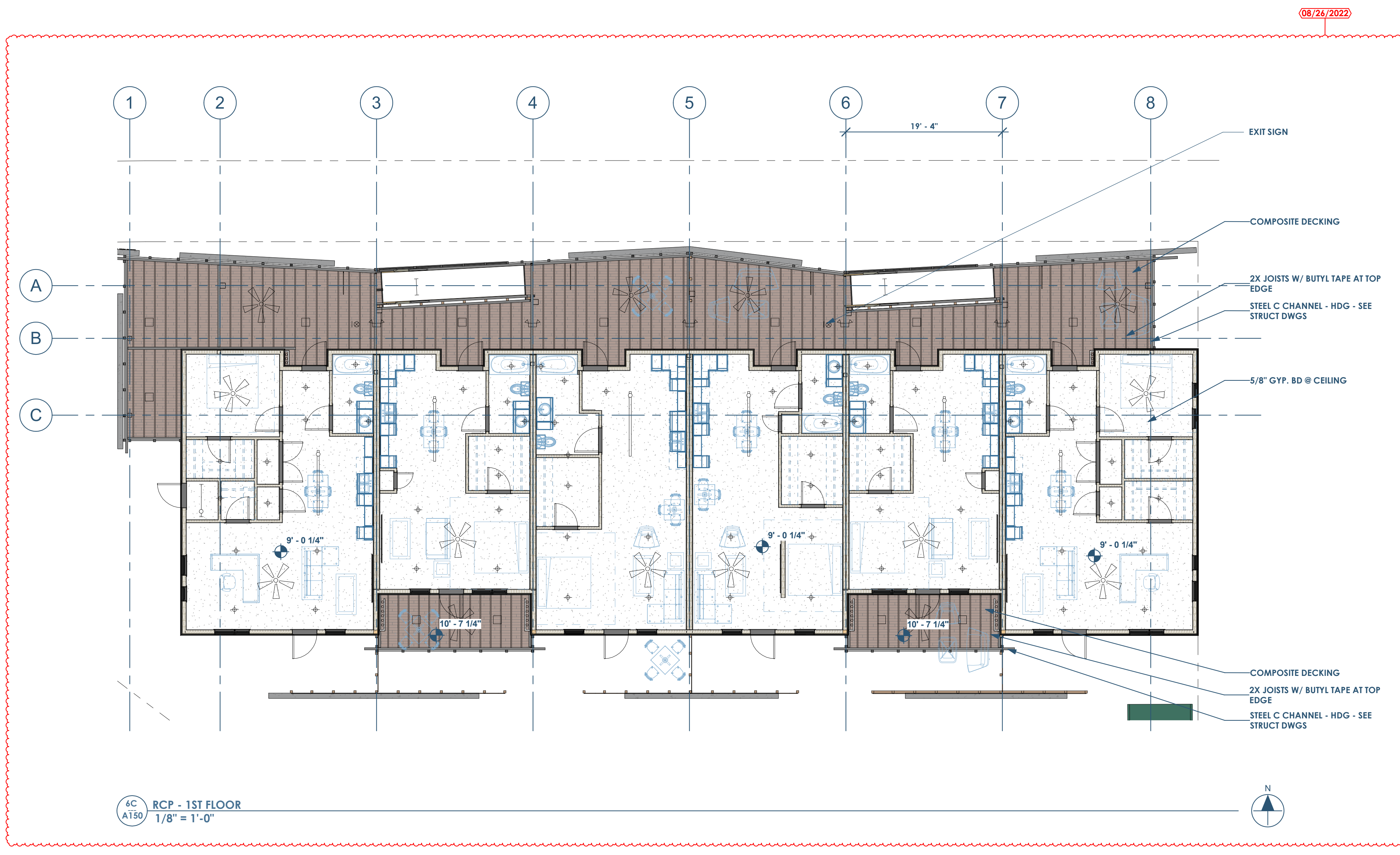
amc
ENGINEERS

MEP: AMC Engineers
Texas Firm #9441
508 E Jackson St # 552
Burnet, TX 78611
info@amcengineers.com | 512.535.6427

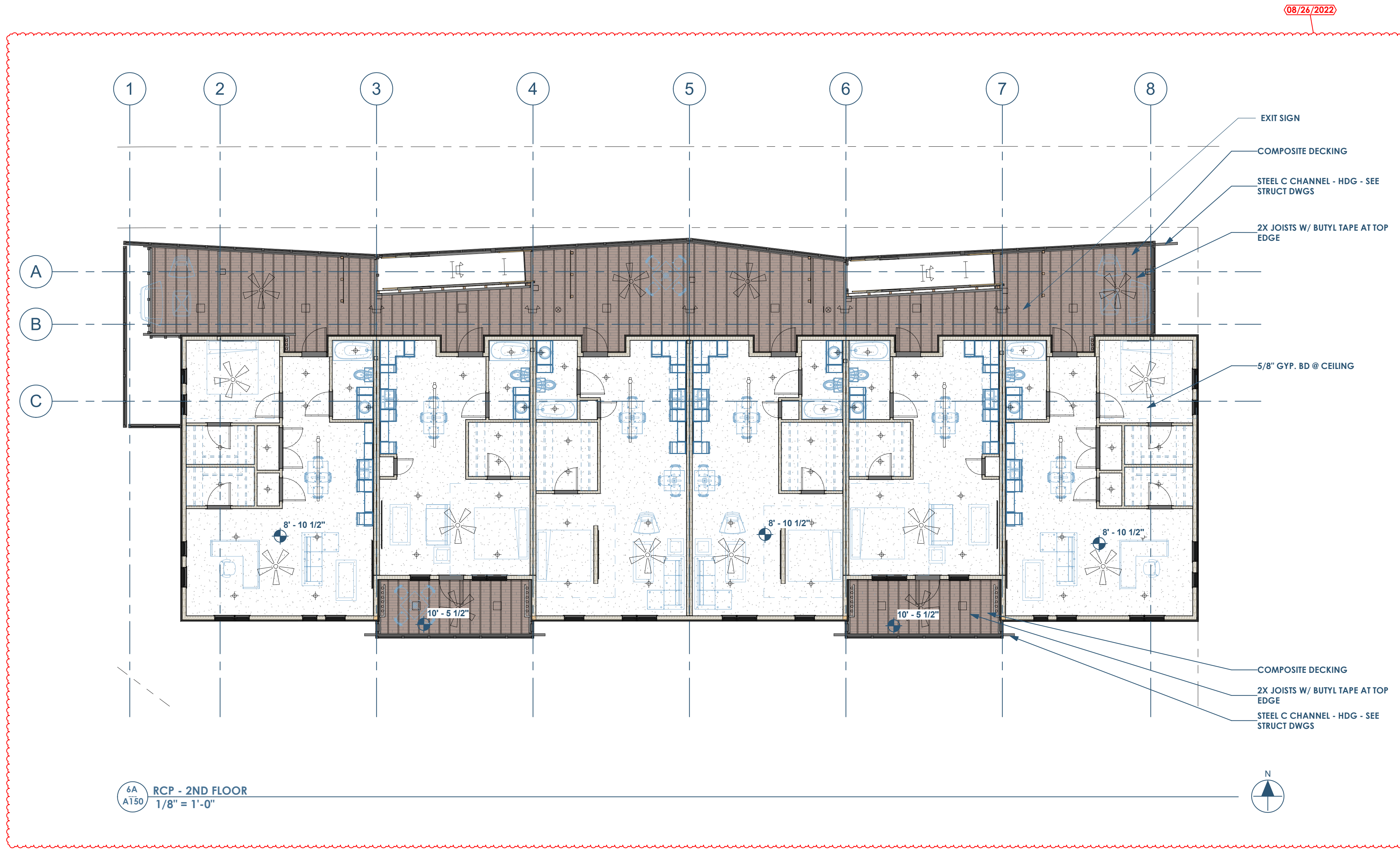


Lisa B. Bixler
8.26.22

This project, like most OpeningDesign's projects, is open source (Attribution-ShareAlike 4.0 International-CC BY-SA 4.0)-freely available to any party for future use, assuming the terms such as Attribution and ShareAlike are honored.



4C RCP - 1ST FLOOR
1/8" = 1'-0"



6A RCP - 2ND FLOOR
1/8" = 1'-0"

GENERAL NOTES - REFLECTED CEILING PLAN
• SEE E120 - E122 FOR LIGHTING PLAN DETAILS

Date	Description
04/10/2022	Issued for Permit
08/26/2022	Permit Revisions

openingdesign

Architect: OpeningDesign
17 S Fairchild | FL 7
Madison, WI 53703
ryan@openingdesign.com | 773.425.6456