

PARTITION TAG NOMENCLATURE

- 1ST LETTER = CORE MATERIAL**
 - W= WOOD
 - M=METAL
 - C=CONCRETE
 - B=MASONRY BLOCK
- 2ND LETTER = SIZE OF CORE**
 - WOOD: NOMINAL STUD SIZES (EX: 4 = 3 1/2")
 - METAL STUD: (EX 358 = 3 5/8")
 - CONCRETE: ACTUAL WALL THICKNESS (EX: 8 = 8")
 - MASONRY: NOMINAL BRICK MODULES (EX: 8 = 7 5/8")
- 3RD LETTER = LAYER MATERIAL**

	LAYER MATERIAL (3RD LETTER)						
	LAYER 3	LAYER 2	LAYER 1	CORE	LAYER 1	LAYER 2	LAYER 3
A=	-	-	5/8" GYP. BD OR CEMENT BACKERBOARD ON WET WALL	STUDS 16" O.C. (20 GA. IF METAL)	5/8" GYP. BD OR CEMENT BACKERBOARD ON WET WALL	-	-
B=	-	-	5/8" GYP. BD OR CEMENT BACKERBOARD ON WET WALL	STUDS 16" O.C. (20 GA. IF METAL) BATT INSULATION	5/8" GYP. BD OR CEMENT BACKERBOARD ON WET WALL	-	-
C=	-	-	5/8" GYP. BD OR CEMENT BACKERBOARD ON WET WALL	STUDS 16" O.C. (20 GA. IF METAL)	(PROVIDE 1/4" AIR GAP IF AGAINST CONCRETE OR MASONRY)	-	-
D=	-	-	5/8" GYP. BD OR CEMENT BACKERBOARD ON WET WALL	STUDS 16" O.C. (20 GA. IF METAL) BATT INSULATION	(PROVIDE 1/4" AIR GAP IF AGAINST CONCRETE OR MASONRY) - USE TREATED WOOD STUDS IF IN CONTACT WITH CONCRETE/MASONRY	-	-
G=	-	-	5/8" GYP. BD OR CEMENT BACKERBOARD ON WET WALL	SEE WALL STUD SCHEDULE - STRUCT. DWGS	1" AIR GAP (PART OF A DOUBLE STUD WALL)	-	-
H=	-	5/8" GYP. BD OR CEMENT BACKERBOARD ON WET WALL	SHEATHING - SEE STRUCT. DWGS	SEE WALL STUD SCHEDULE - STRUCT. DWGS	1" AIR GAP (PART OF A DOUBLE STUD WALL)	-	-
Q=	FIBER CEMENT - CLAPBOARD SIDING	DRAINAGE WRAP - ASTM 2273	SHEATHING - SEE STRUCT. DWGS	SEE WALL STUD SCHEDULE - STRUCT. DWGS	5/8" GYP. BD OR CEMENT BACKERBOARD ON WET WALL	-	-
R=	FIBER CEMENT - BATTEN AND BOARD SIDING	DRAINAGE WRAP - ASTM 2273	SHEATHING - SEE STRUCT. DWGS	SEE WALL STUD SCHEDULE - STRUCT. DWGS	5/8" GYP. BD OR CEMENT BACKERBOARD ON WET WALL & SHEATHING LAYER, IF AT PARTY WALL (SEE STRUCT DWGS)	-	-
S=	7/8" CORRUGATED METAL SIDING	DRAINAGE WRAP - ASTM 2273	SHEATHING - SEE STRUCT. DWGS	SEE WALL STUD SCHEDULE - STRUCT. DWGS	5/8" GYP. BD OR CEMENT BACKERBOARD ON WET WALL & SHEATHING LAYER, IF AT PARTY WALL (SEE STRUCT DWGS)	-	-
T=	FIBER CEMENT - CLAPBOARD SIDING	DRAINAGE WRAP - ASTM 2273	5/8" FIBERGLASS MAT GYPSUM SHEATHING	SEE WALL STUD SCHEDULE - STRUCT. DWGS	5/8" GYP. BD OR CEMENT BACKERBOARD ON WET WALL & SHEATHING LAYER, IF AT PARTY WALL (SEE STRUCT DWGS)	-	-
U=	FIBER CEMENT - BATTEN AND BOARD SIDING	DRAINAGE WRAP - ASTM 2273	5/8" FIBERGLASS MAT GYPSUM SHEATHING	SEE WALL STUD SCHEDULE - STRUCT. DWGS	5/8" GYP. BD OR CEMENT BACKERBOARD ON WET WALL & SHEATHING LAYER, IF AT PARTY WALL (SEE STRUCT DWGS)	-	-
V=	7/8" CORRUGATED METAL SIDING	DRAINAGE WRAP - ASTM 2273	5/8" FIBERGLASS MAT GYPSUM SHEATHING	SEE WALL STUD SCHEDULE - STRUCT. DWGS	5/8" GYP. BD OR CEMENT BACKERBOARD ON WET WALL & SHEATHING LAYER, IF AT PARTY WALL (SEE STRUCT DWGS)	-	-
W=	7/8" CORRUGATED METAL SIDING	DRAINAGE WRAP - ASTM 2273	SHEATHING - SEE STRUCT. DWGS	SEE WALL STUD SCHEDULE - STRUCT. DWGS	SHEATHING - SEE STRUCT. DWGS	DRAINAGE WRAP - ASTM 2273	7/8" CORRUGATED METAL SIDING
X=	7/8" CORRUGATED METAL SIDING	DRAINAGE WRAP - ASTM 2273	5/8" FIBERGLASS MAT GYPSUM SHEATHING	SEE WALL STUD SCHEDULE - STRUCT. DWGS	5/8" FIBERGLASS MAT GYPSUM SHEATHING	DRAINAGE WRAP - ASTM 2273	7/8" CORRUGATED METAL SIDING
Z=	-	-	16 GA PERFORATED GALV. STEEL	2.5" 12GA. STRUCTURAL METAL STUD - C/P90 GALV.	-	-	-

4TH NUMBER: FIRE RATING

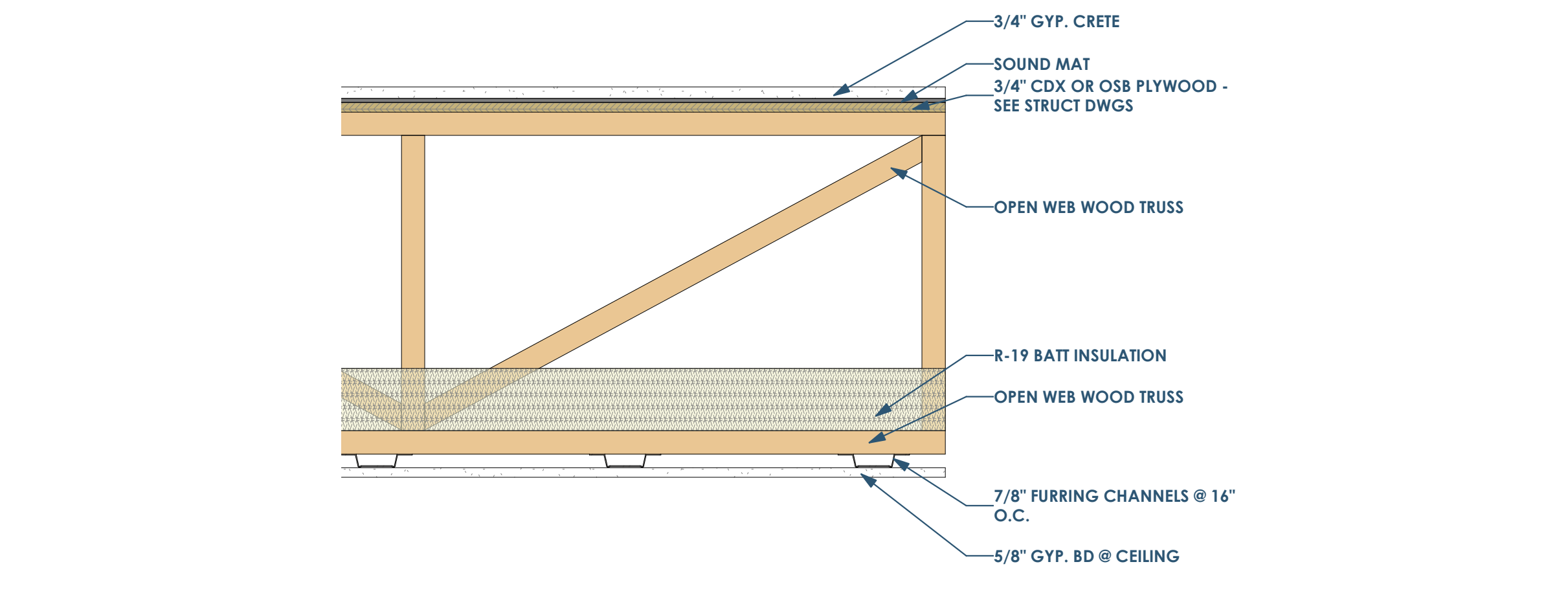
- 0=0 HOUR
- 1=1 HOUR
- 2=2 HOUR
- 3=3 HOUR
- 5=5/8 HOUR

5TH (AND BEYOND) LETTERS = MODIFIERS

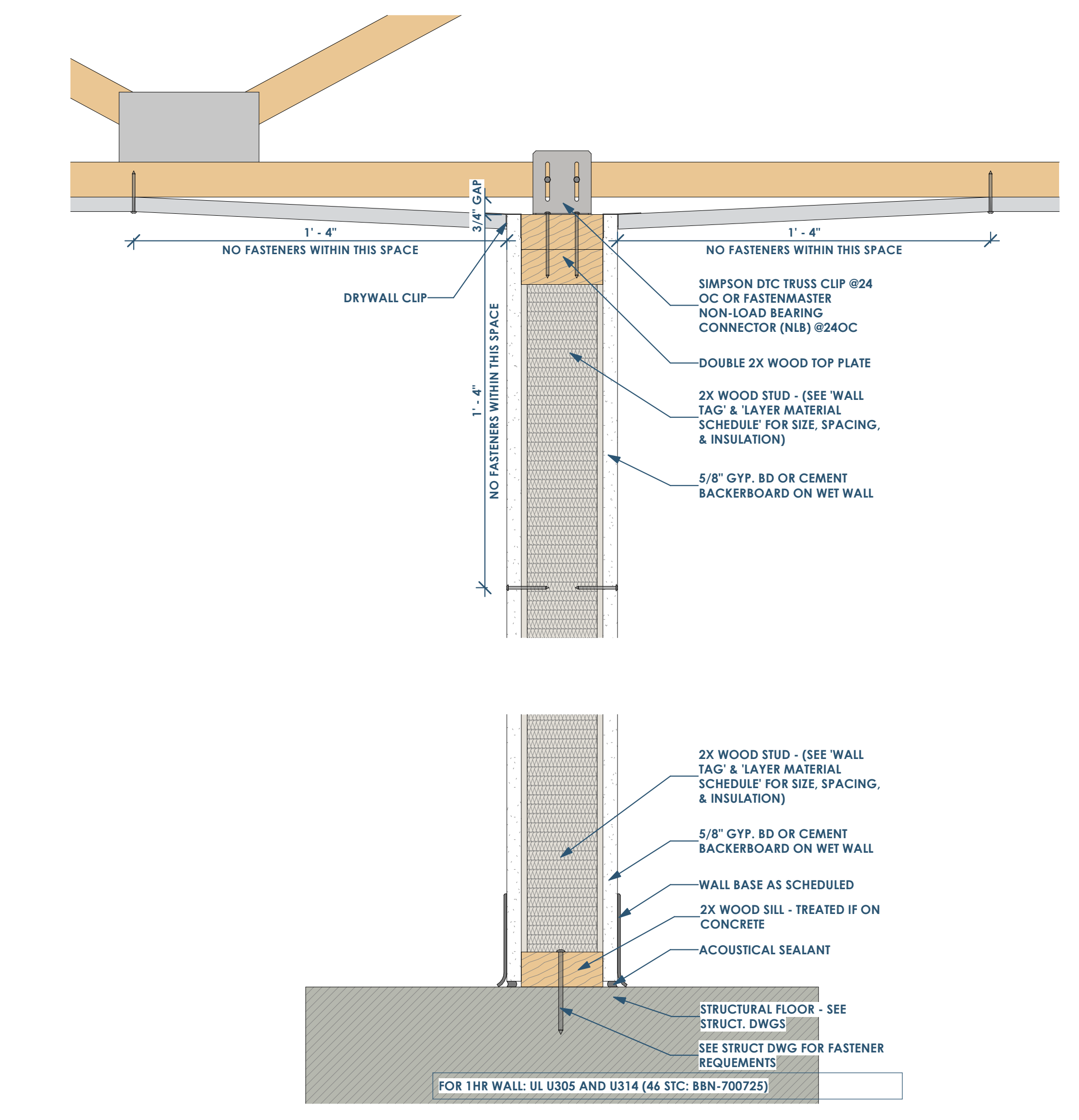
- A=PARTIAL HEIGHT PARTITION (WALL LAYER 1, 2, & 3 TO EXTEND 4" ABOVE FINISHED CEILING HEIGHT)
- B=PARTIAL HEIGHT WALL (WALL LAYER 1, 2, & 3 TO TERMINATE AT OR BELOW HUNG CEILING)
- D=FULL HEIGHT TO UNDERSIDE OF STRUCTURAL DECK/SHEATHING (CORE AND WALL LAYER 1, 2, & 3 TO TERMINATE AT STRUCTURAL DECK)
- F=FULL HEIGHT TO THE BOTTOM OF STRUCTURE
- K=KNEE WALL PARTITION
- R=FURRED OUT WALL

EXAMPLE: M358B0AR

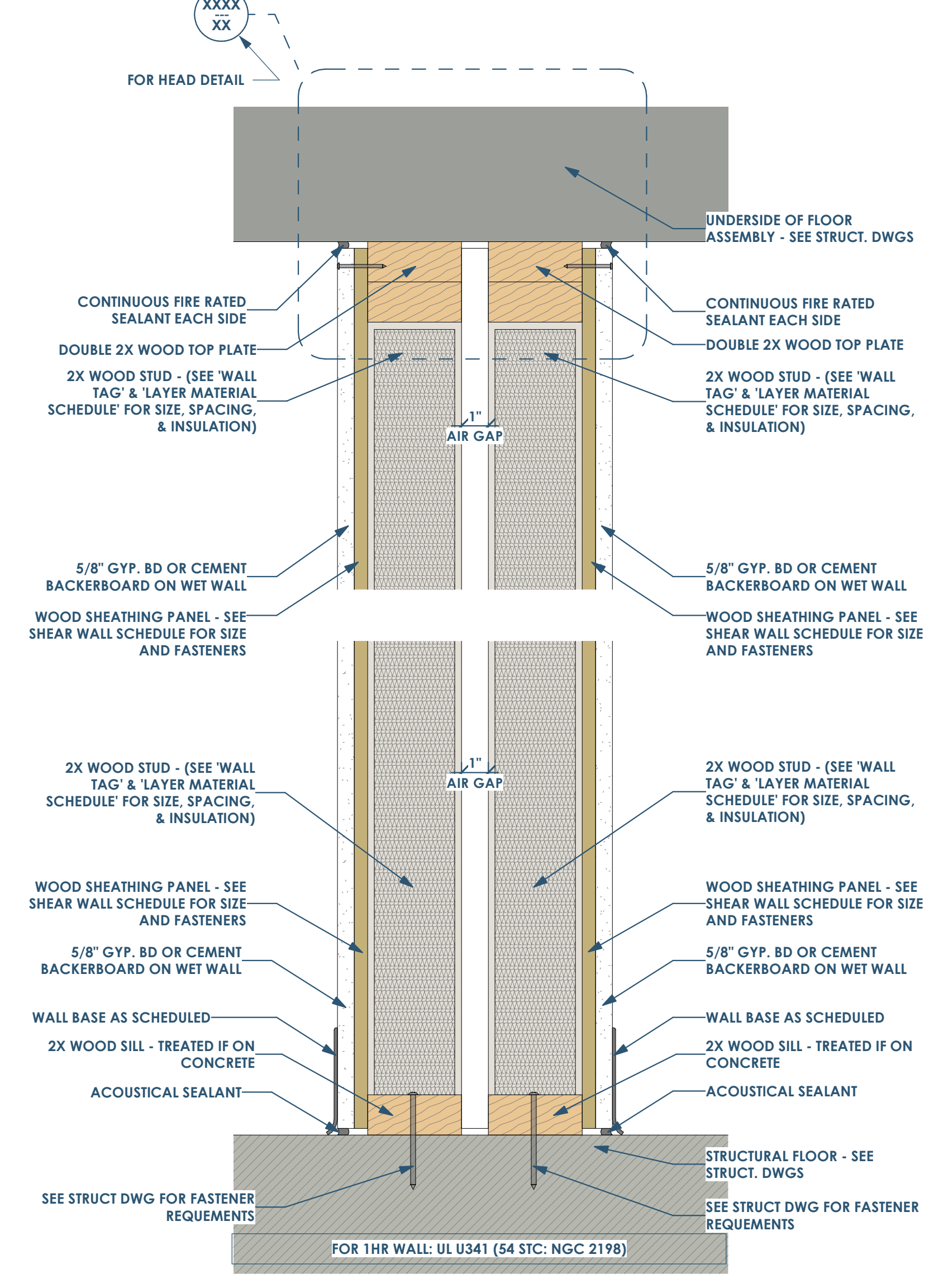
- M=METAL
- 358=3 5/8" METAL STUD
- B=20 GA METAL STUDS 16" O.C. W/ BATT INSULATION
- 0=0 HOUR
- A=PARTIAL HEIGHT PARTITION (WALL LAYER 1, 2, & 3 TO EXTEND 4" ABOVE FINISHED CEILING HEIGHT)
- R=FURRED OUT WALL



1 A800 FLOOR/CEILING ASSEMBLY - L521
1 1/2" = 1'-0"



4A A800 W/C/J/F FULL HEIGHT PARTITION
3\"/>



2 A800 W4(0)SD PARTY WALL - 1 HR RATED WALL (ONLY 1/2 HR IS REQUIRED)
3\"/>

This project, like most OpeningDesign's projects, is open source (Attribution-ShareAlike 4.0 International-CC BY-SA 4.0)-freely available to any party for future use, assuming the terms such as Attribution and ShareAlike are honored.

Date	Description
05.19.2022	Progress Set