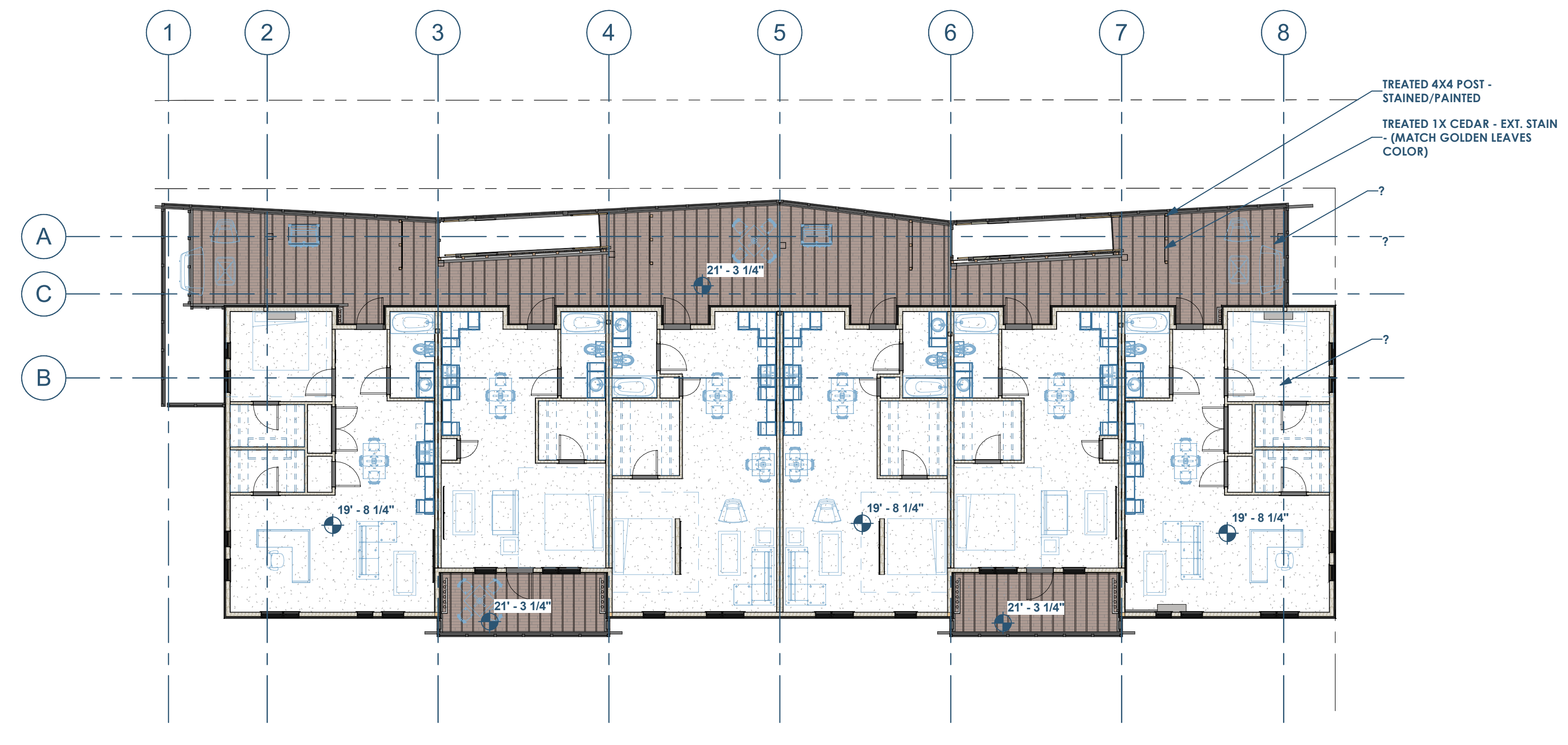
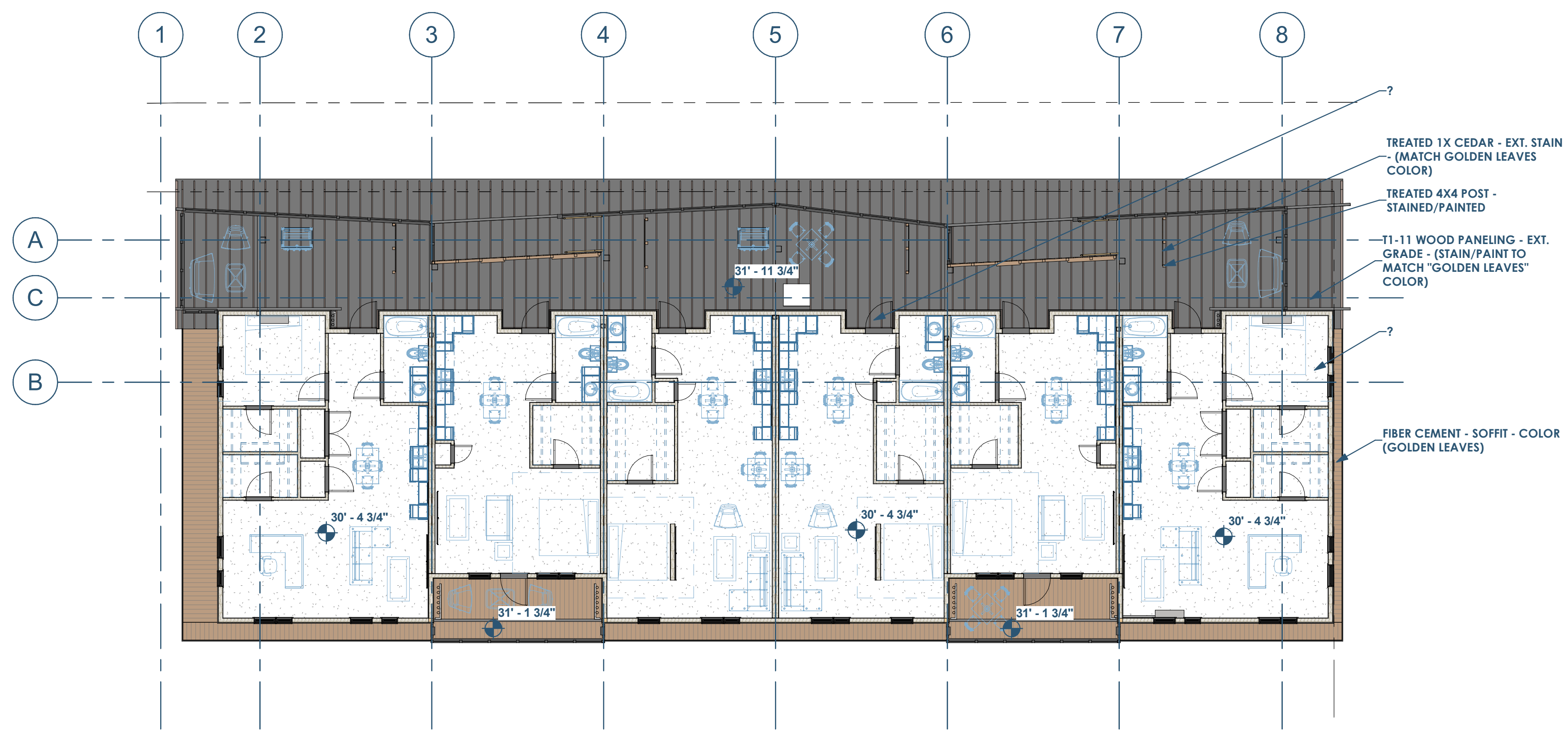


2 RCP - 1ST FLOOR  
A150  
1" = 10'-0"



1 RCP - 2ND FLOOR  
A150  
1" = 10'-0"



3 RCP - 3RD FLOOR  
A150  
1" = 10'-0"

This project, like most OpeningDesign's projects, is open source (Attribution-ShareAlike 4.0 International-CC BY-SA 4.0)-freely available to any party for future use, assuming the terms such as Attribution and ShareAlike are honored.

**RENOVATION**  
*Wranglers*  
Owner: Renovation Wranglers  
102 E 26th St  
Bryan, TX 77803  
kate@renovations.com | 979.450.9969

**LKB ARCHITECTURE**  
Architect of Record: LKB Architecture  
2929 Allen Pkwy Suite 200  
Houston, TX 77019  
isa@lkbarchitecture.com | 713.425.3076

**DUDDLEY**  
Structural: Dudley  
6102 Imperial Loop Drive  
College Station, TX 77845  
(979) 777-0720

**amc ENGINEERS**  
MEP: AMC Engineers  
508 E Jackson St # 552  
Burnet, TX 78611  
info@amcengineers.com

**openingdesign**  
Architect: OpeningDesign  
17 S Fairchild | FL 7  
Madison, WI 53703  
ryan@openingdesign.com | 773.425.6456

Date	Description
05.19.2022	Progress Set