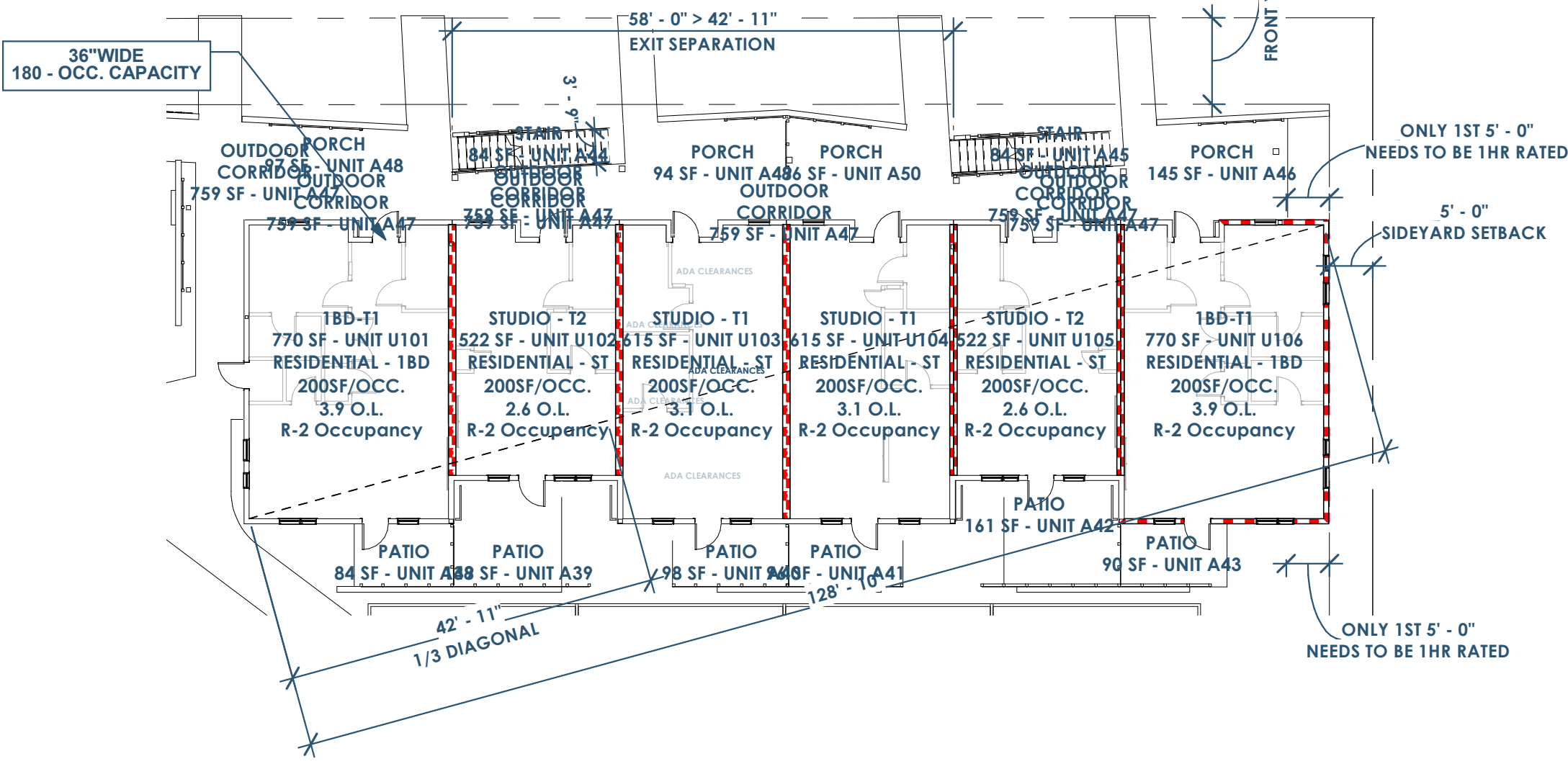
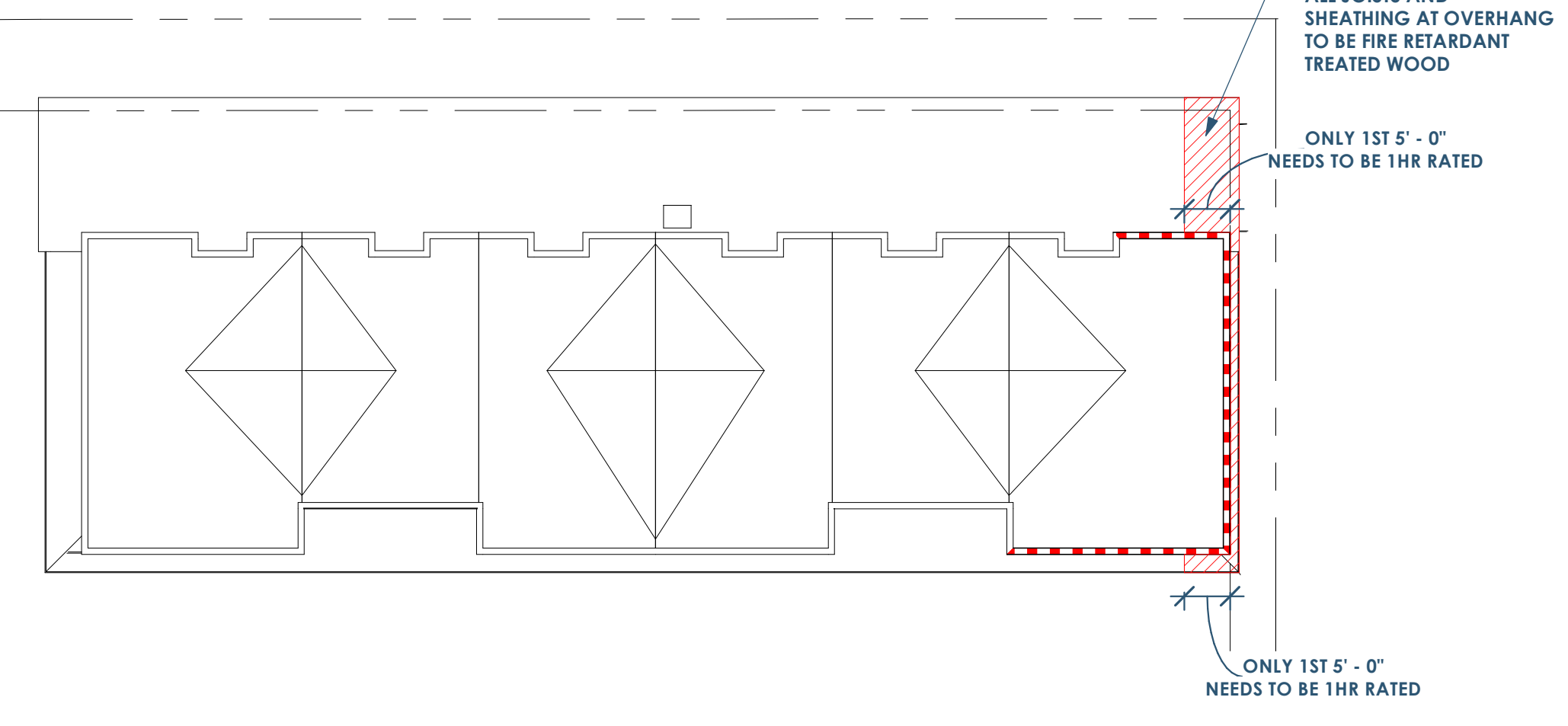


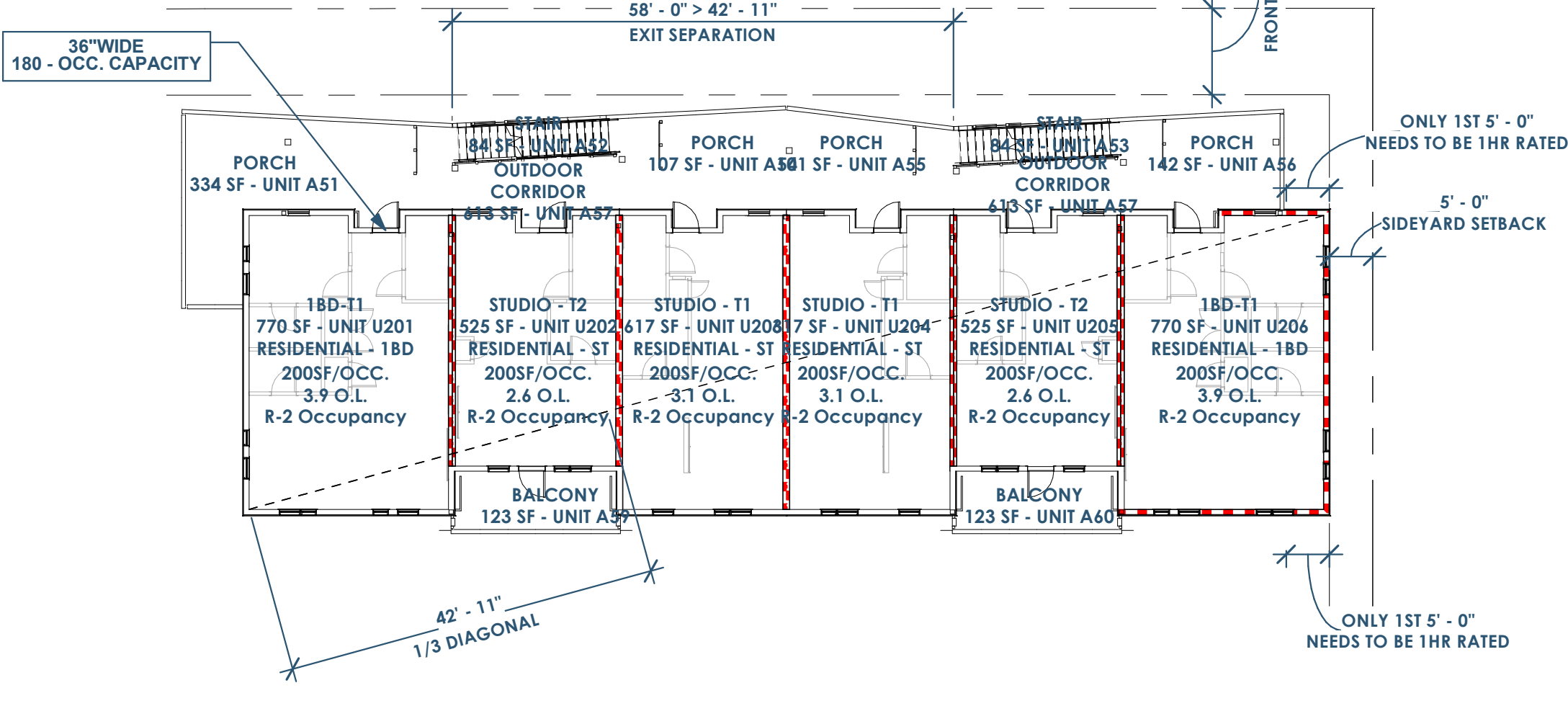
OCCUPANT LOAD (BASED ON TABLE 1004.1.2)						
Level	Name	Occupancy	Area	Function of Space	Area Allowance Per Occupant	Occupant Load
3RD FLOOR	OUTDOOR CORRIDOR	R-2	635 SF	CIRCULATION	200	3.2
3RD FLOOR	STAIR	R-2	84 SF	CIRCULATION	200	0.4
3RD FLOOR	STAIR	R-2	81 SF	CIRCULATION	200	0.4
3RD FLOOR	BALCONY	R-2	123 SF	RESIDENTIAL	200	0.6
3RD FLOOR	BALCONY	R-2	123 SF	RESIDENTIAL	200	0.6
3RD FLOOR	PORCH	R-2	224 SF	RESIDENTIAL	200	1.1
3RD FLOOR	PORCH	R-2	107 SF	RESIDENTIAL	200	0.5
3RD FLOOR	PORCH	R-2	101 SF	RESIDENTIAL	200	0.5
3RD FLOOR	PORCH	R-2	142 SF	RESIDENTIAL	200	0.7
3RD FLOOR	1BD-T1	R-2	770 SF	RESIDENTIAL - 1BD	200	3.9
3RD FLOOR	1BD-T1	R-2	770 SF	RESIDENTIAL - 1BD	200	3.9
3RD FLOOR	STUDIO - T1	R-2	618 SF	RESIDENTIAL - ST	200	3.1
3RD FLOOR	STUDIO - T1	R-2	618 SF	RESIDENTIAL - ST	200	3.1
3RD FLOOR	STUDIO - T2	R-2	525 SF	RESIDENTIAL - ST	200	2.6
3RD FLOOR	STUDIO - T2	R-2	525 SF	RESIDENTIAL - ST	200	2.6
3RD FLOOR: 15			5447 SF			27.2
2ND FLOOR	OUTDOOR CORRIDOR	R-2	613 SF	CIRCULATION	200	3.1
2ND FLOOR	STAIR	R-2	84 SF	CIRCULATION	200	0.4
2ND FLOOR	STAIR	R-2	84 SF	CIRCULATION	200	0.4
2ND FLOOR	BALCONY	R-2	123 SF	RESIDENTIAL	200	0.6
2ND FLOOR	BALCONY	R-2	123 SF	RESIDENTIAL	200	0.6
2ND FLOOR	PORCH	R-2	334 SF	RESIDENTIAL	200	1.7
2ND FLOOR	PORCH	R-2	107 SF	RESIDENTIAL	200	0.5
2ND FLOOR	PORCH	R-2	101 SF	RESIDENTIAL	200	0.5
2ND FLOOR	PORCH	R-2	142 SF	RESIDENTIAL	200	0.7
2ND FLOOR	1BD-T1	R-2	770 SF	RESIDENTIAL - 1BD	200	3.9
2ND FLOOR	1BD-T1	R-2	770 SF	RESIDENTIAL - 1BD	200	3.9
2ND FLOOR	STUDIO - T1	R-2	617 SF	RESIDENTIAL - ST	200	3.1
2ND FLOOR	STUDIO - T1	R-2	617 SF	RESIDENTIAL - ST	200	3.1
2ND FLOOR	STUDIO - T2	R-2	525 SF	RESIDENTIAL - ST	200	2.6
2ND FLOOR	STUDIO - T2	R-2	525 SF	RESIDENTIAL - ST	200	2.6
2ND FLOOR: 15			5537 SF			27.7
1ST FLOOR	OUTDOOR CORRIDOR	R-2	759 SF	CIRCULATION	200	3.8
1ST FLOOR	STAIR	R-2	84 SF	CIRCULATION	200	0.4
1ST FLOOR	STAIR	R-2	84 SF	CIRCULATION	200	0.4
1ST FLOOR	PATIO	R-2	84 SF	RESIDENTIAL	200	0.4
1ST FLOOR	PATIO	R-2	149 SF	RESIDENTIAL	200	0.7
1ST FLOOR	PATIO	R-2	98 SF	RESIDENTIAL	200	0.5
1ST FLOOR	PATIO	R-2	96 SF	RESIDENTIAL	200	0.5
1ST FLOOR	PATIO	R-2	141 SF	RESIDENTIAL	200	0.8
1ST FLOOR	PATIO	R-2	90 SF	RESIDENTIAL	200	0.4
1ST FLOOR	PORCH	R-2	145 SF	RESIDENTIAL	200	0.7
1ST FLOOR	PORCH	R-2	97 SF	RESIDENTIAL	200	0.5
1ST FLOOR	PORCH	R-2	94 SF	RESIDENTIAL	200	0.5
1ST FLOOR	PORCH	R-2	86 SF	RESIDENTIAL	200	0.4
1ST FLOOR	1BD-T1	R-2	770 SF	RESIDENTIAL - 1BD	200	3.9
1ST FLOOR	1BD-T1	R-2	770 SF	RESIDENTIAL - 1BD	200	3.9
1ST FLOOR	STUDIO - T1	R-2	615 SF	RESIDENTIAL - ST	200	3.1
1ST FLOOR	STUDIO - T1	R-2	615 SF	RESIDENTIAL - ST	200	3.1
1ST FLOOR	STUDIO - T2	R-2	522 SF	RESIDENTIAL - ST	200	2.6
1ST FLOOR	STUDIO - T2	R-2	522 SF	RESIDENTIAL - ST	200	2.6
1ST FLOOR: 19			5842 SF			29.2
Grand total: 49			18262 SF			84.1



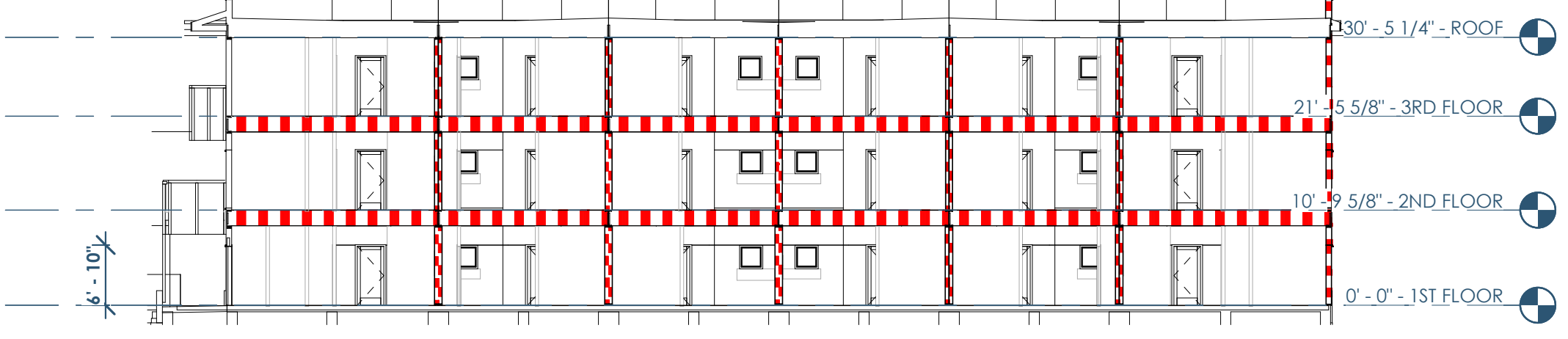
4B A001 LIFE SAFETY - 1ST FLOOR
1/16" = 1'-0"



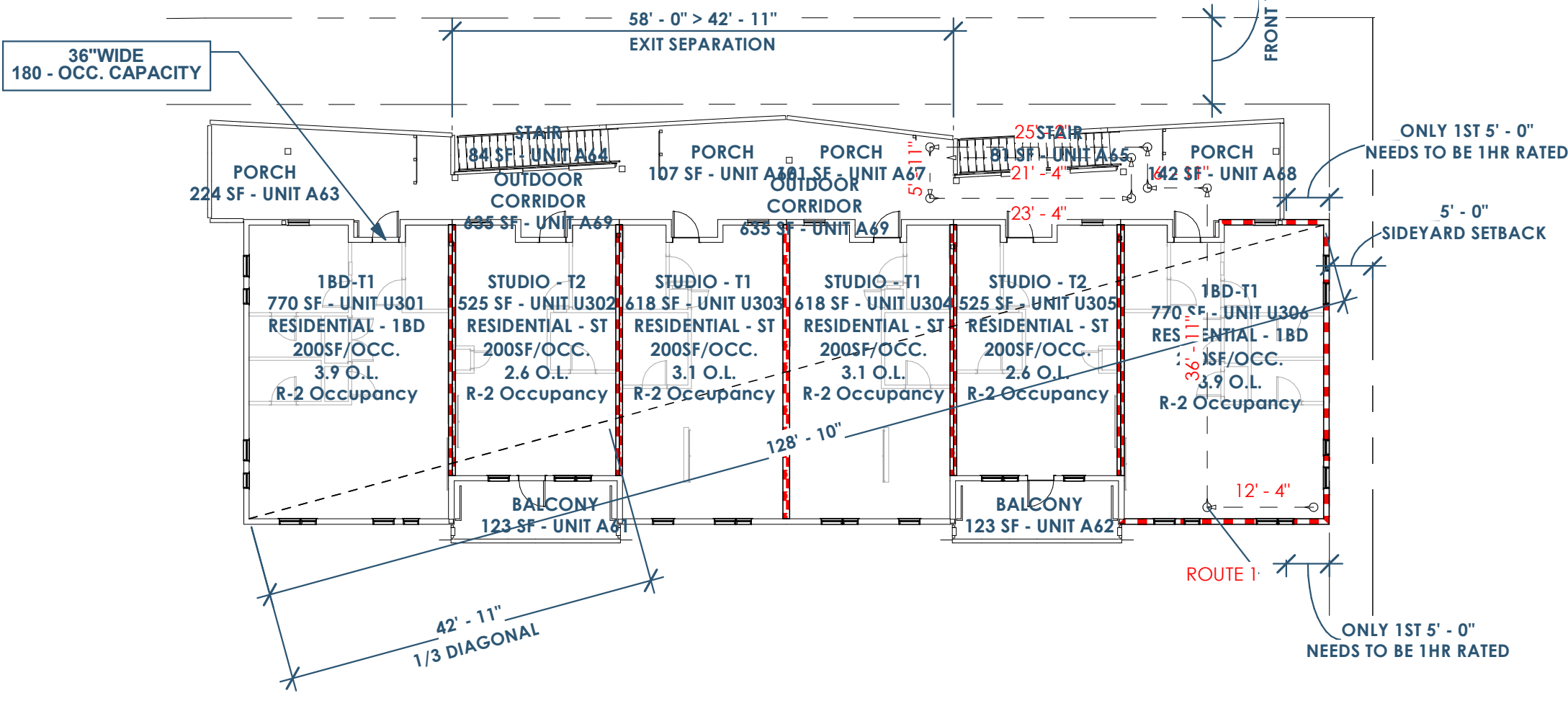
5 A001 LIFE SAFETY - ROOF
1/16" = 1'-0"



6C A001 LIFE SAFETY - 2ND FLOOR
1/16" = 1'-0"



1 A001 LIFE SAFETY SECTION - EAST/WEST
1/16" = 1'-0"



6A A001 LIFE SAFETY - 3RD FLOOR
1/16" = 1'-0"

RATED WALLS/FLOORS LEGEND

[Red/White Pattern]	RATED - 4 HR
[Red/White Pattern]	RATED - 3 HR
[Red/White Pattern]	RATED - 2 HR
[Red/White Pattern]	RATED - 1.5 HR
[Red/White Pattern]	RATED - 1 HR
[Red/White Pattern]	RATED - 0.5 HR

EGRESS DATA

EXIT ROUTE	DISTANCE
ROUTE 1	141' - 4"

RENOVATION Wranglers
Owner: Renovation Wranglers
102 E 26th St
Bryan, TX 77803
Katherine@wranglers.com | 979.450.9969

ARCHITECTURE
Architect of Record: UKB Architecture
2929 Allen Pkwy Suite 200
Houston, TX 77019
isa@ukbarchitecture.com | 713.425.3076

MEP ENGINEERS
MEP: AMC Engineers
508 E Jackson St # 552
Burnet, TX 78611
info@amcengineers.com

This project, like most OpeningDesign's projects, is open source (Attribution-ShareAlike 4.0 International-CC BY-SA 4.0)-freely available to any party for future use, assuming the terms such as Attribution and ShareAlike are honored.

openingdesign
Architect: OpeningDesign
17 S Fairchild | FL 7
Madison, WI 53703
ryan@openingdesign.com | 773.425.6456

Date	Description
05.19.2022	Progress Set