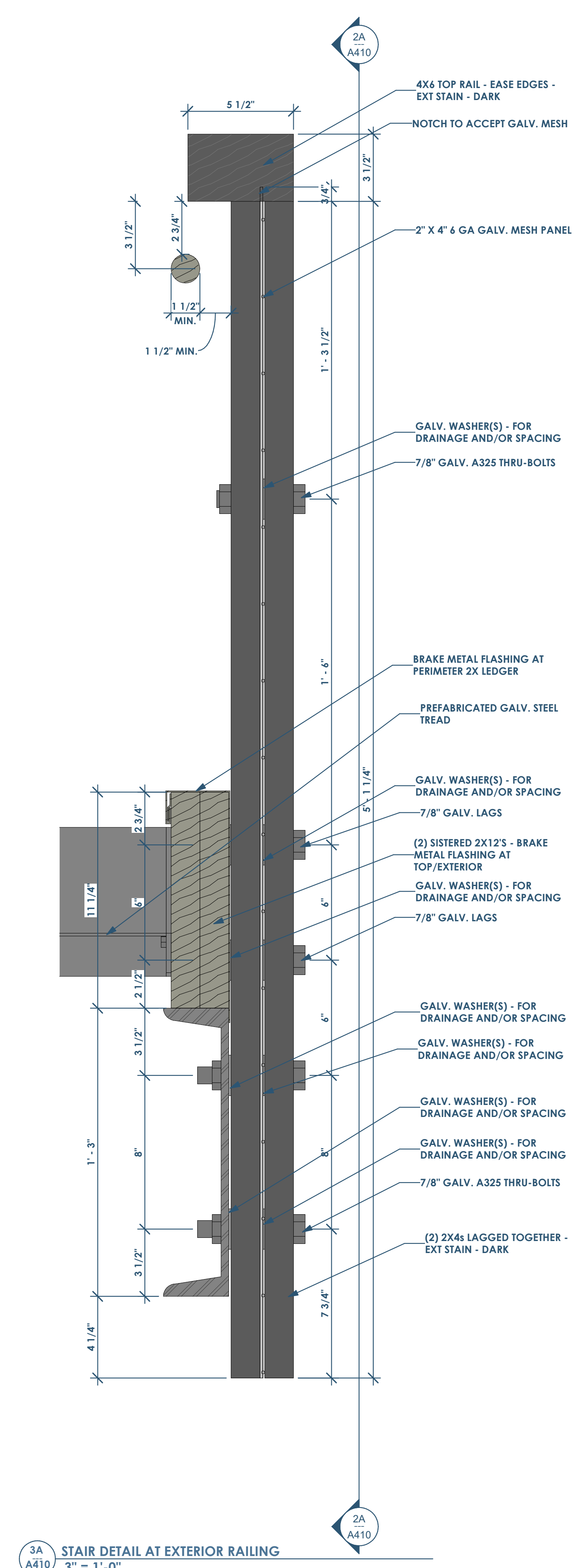
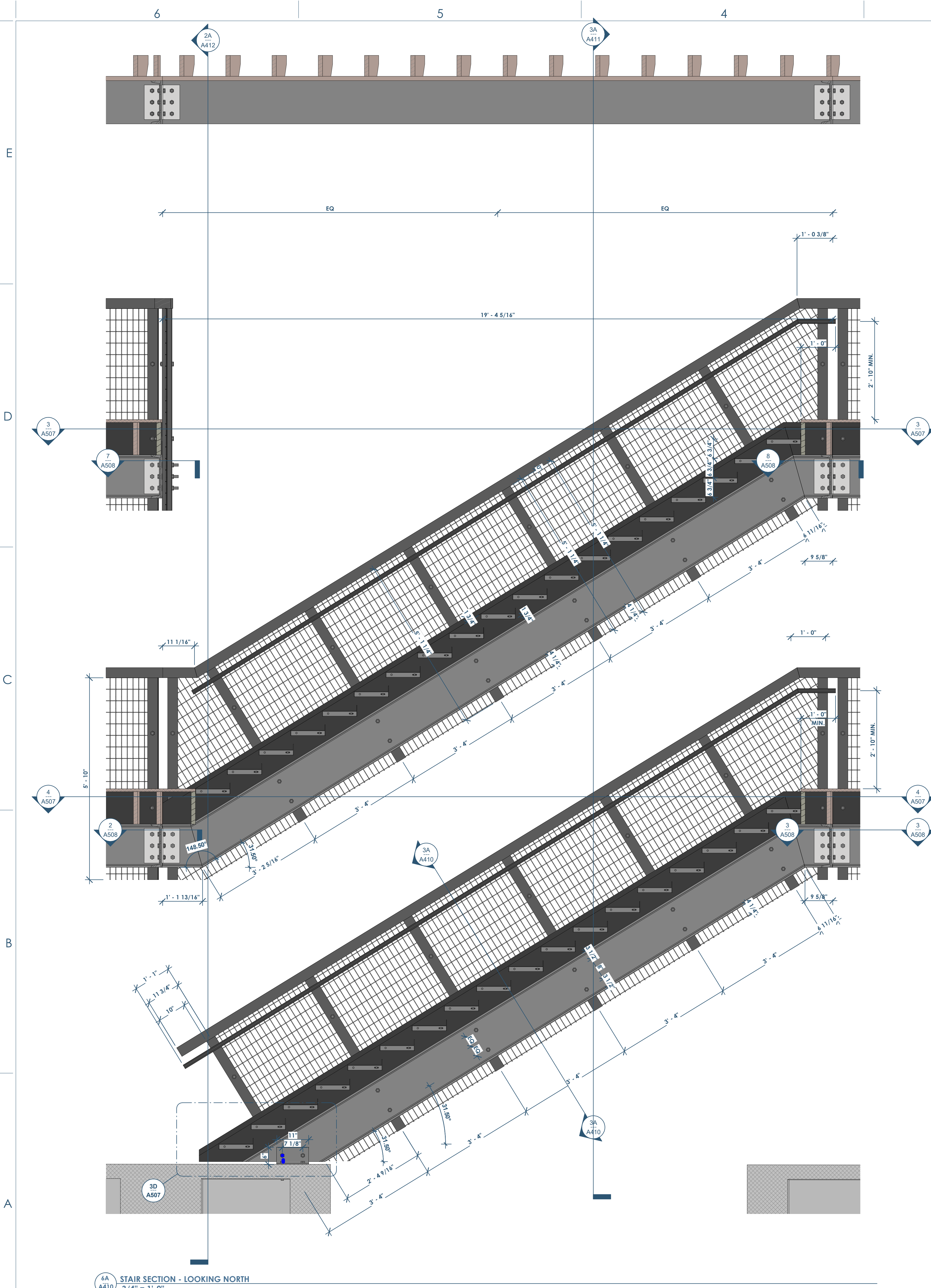


RENOVATION Wranglers
 Owner: Renovation Wranglers
 102 E 26th St
 Bryan, TX 77803
 Katerineasonline.com | 979.450.9969

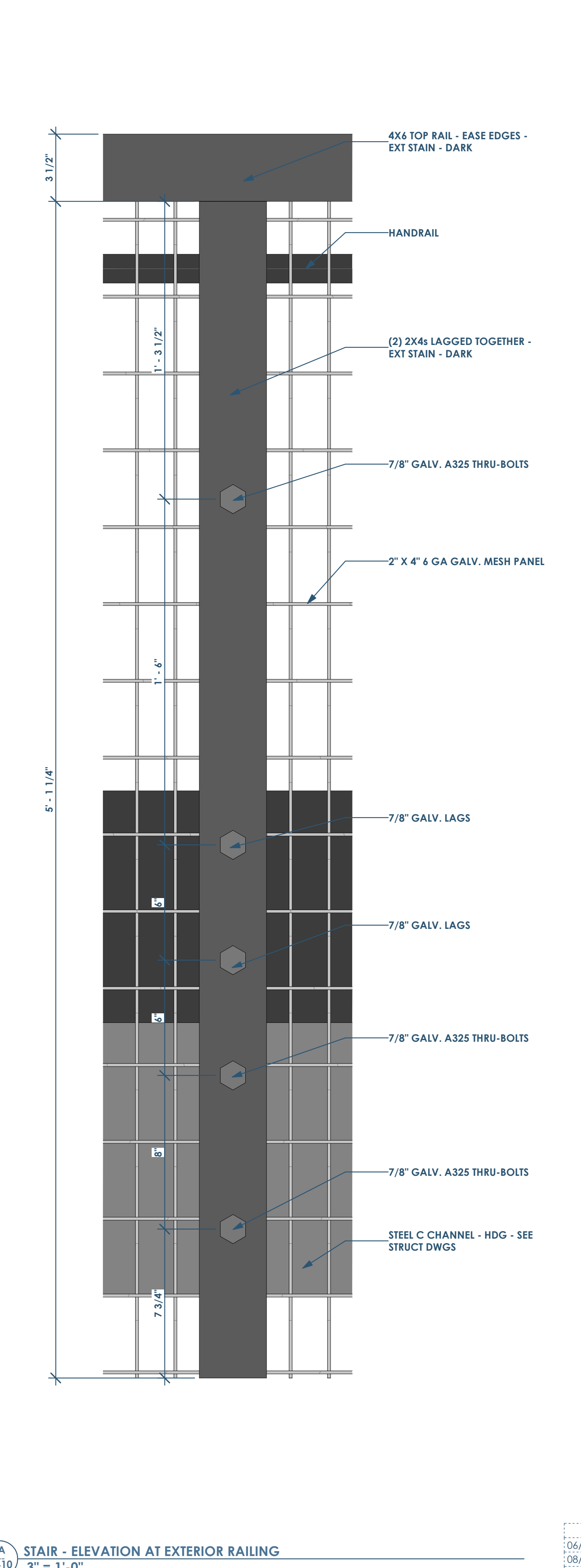
LKB ARCHITECTURE
 Architect of Record: LKB Architecture
 2929 Allen Pkwy Suite 200
 Houston, TX 77019
 isa@lkbarchitecture.com | 713.425.3076

DUDLEY
 Structural: Dudley
 Firm # 18677
 6102 Imperial Loop Drive
 College Station, TX 77845
 coofeka@dudleyeng.com | (979) 777-0720

amc ENGINEERS
 MEP: AMC Engineers
 Texas Firm #9441
 508 E Jackson St # 552
 Bunes, TX 78611
 info@amcengineers.com | 512.535.6427



3A A410 STAIR DETAIL AT EXTERIOR RAILING
3\"/>



2A A410 STAIR - ELEVATION AT EXTERIOR RAILING
3\"/>

6A A410 STAIR SECTION - LOOKING NORTH
3/4\"/>

This project, like most OpeningDesign's projects, is open source. (Attribution-ShareAlike 4.0 International-CC BY-SA 4.0) -freely available to any party for future use, assuming the terms such as Attribution and ShareAlike are honored.

Date	Description
04/10/2022	Issued for Permit
08/26/2022	Permit Revisions
10/21/2022	Stair Details - Progress Set

openingdesign
 Architect: OpeningDesign
 17 S Fairchild | FL 7
 Madison, WI 53703
 ryan@openingdesign.com | 773.425.6456

Owner: Renovation Wranglers
102 E 26th St
Bryan, TX 77803
Kateneason@me.com | 979.450.9969

ARCHITECTURE
Architect of Record: LKB Architecture
2929 Allen Pkwy Suite 200
Houston, TX 77019
isa@lkbarchitecture.com | 713.425.3076

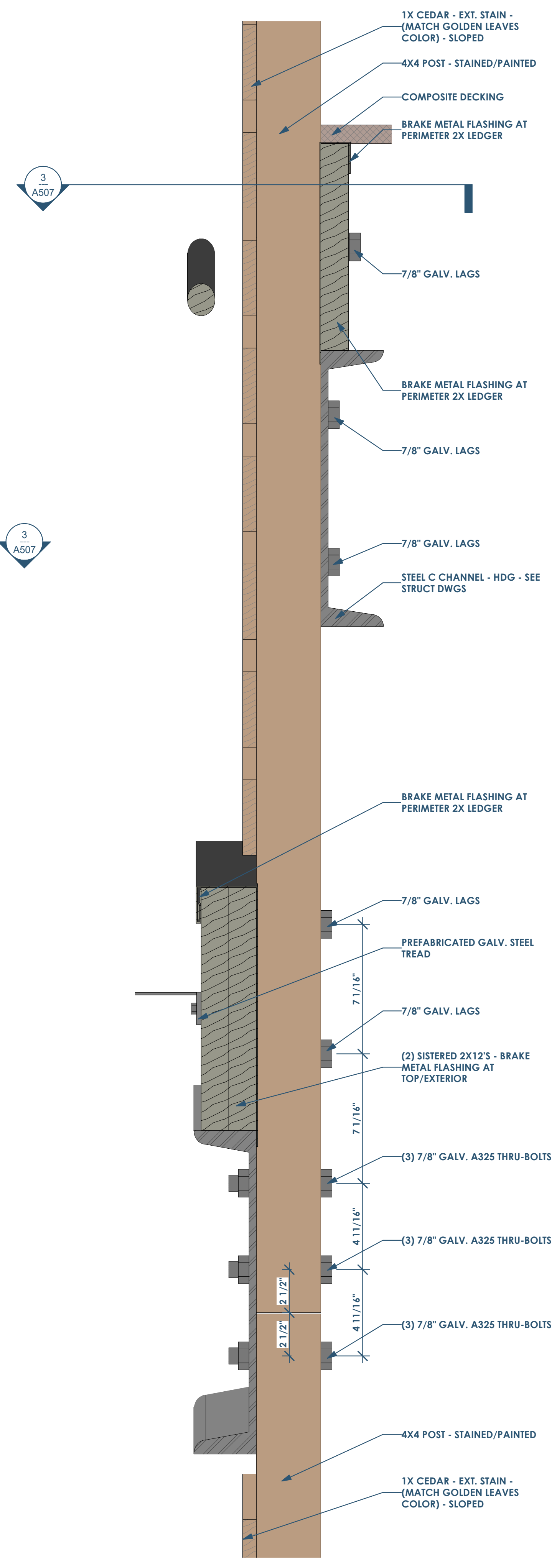
STRUCTURAL
Structural: Dudley
Firm# 18677
6102 Imperial Loop Drive
College Station, TX 77845
corleka@dudleyeng.com | (979) 777-0720

MEP: AMC Engineers
Texas Firm #9441
508 E Jackson St # 552
Bunnet, TX 78611
info@amcengineers.com | 512.535.6427

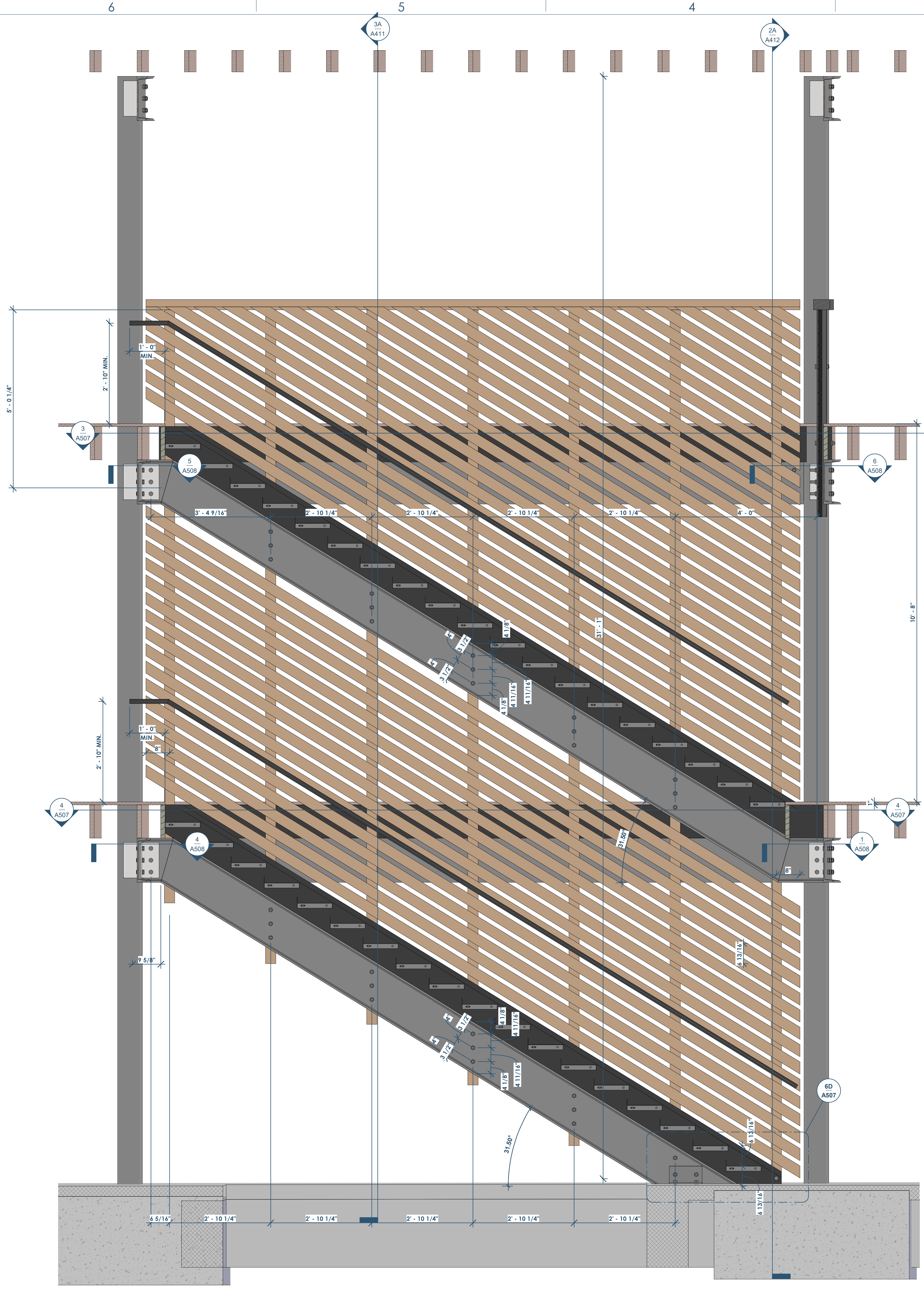
This project, like most OpeningDesign's projects, is open source (Attribution-ShareAlike 4.0 International-CC BY-SA 4.0)-freely available to any party for future use, assuming the terms such as Attribution and ShareAlike are honored.

openingdesign
Architect: OpeningDesign
17 S Fairchild | FL 7
Madison, WI 53703
ryan@openingdesign.com | 773.425.6456

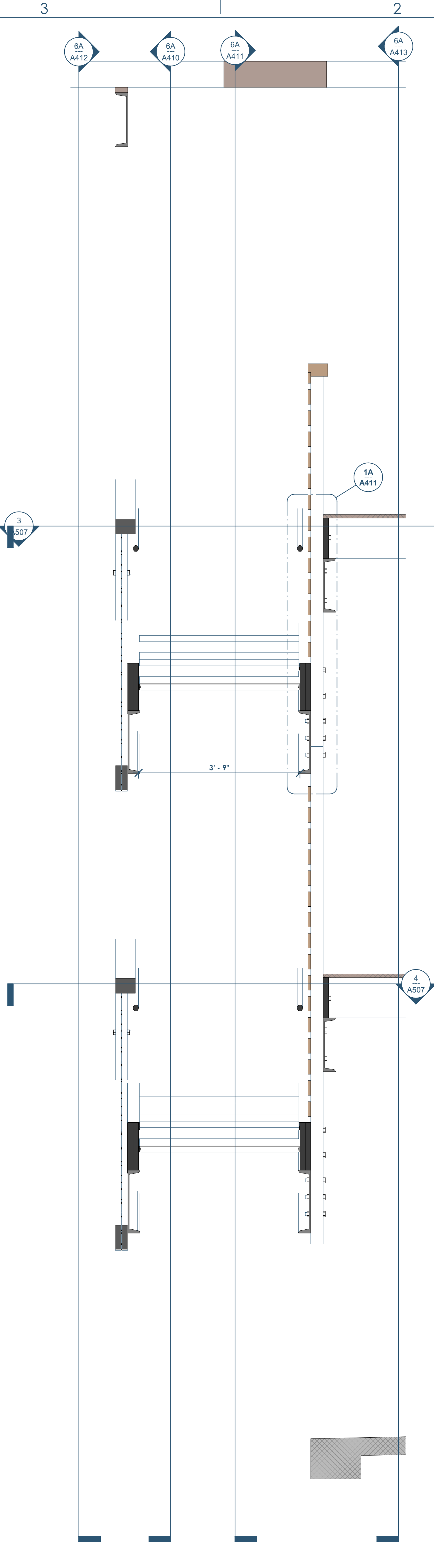
Date	Description
04/10/2022	Issued for Permit
08/26/2022	Permit Revisions
10/21/2022	Stair Details - Progress Set



1A A411 STAIR DETAIL - LOOKING WEST
3" = 1'-0"



6A A411 STAIR SECTION - LOOKING SOUTH
3/4" = 1'-0"



3A A411 STAIR SECTION - LOOKING WEST
3/4" = 1'-0"

RENOVATION
Phantoms
 Owner: Renovation Wranglers
 102 E 26th St
 Bryan, TX 77803
 Katerineasonline.com | 979.450.9969

LKB
 ARCHITECTURE
 Architect of Record: LKB Architecture
 2929 Allen Pkwy Suite 200
 Houston, TX 77019
 isa@lkbarchitecture.com | 713.425.3076

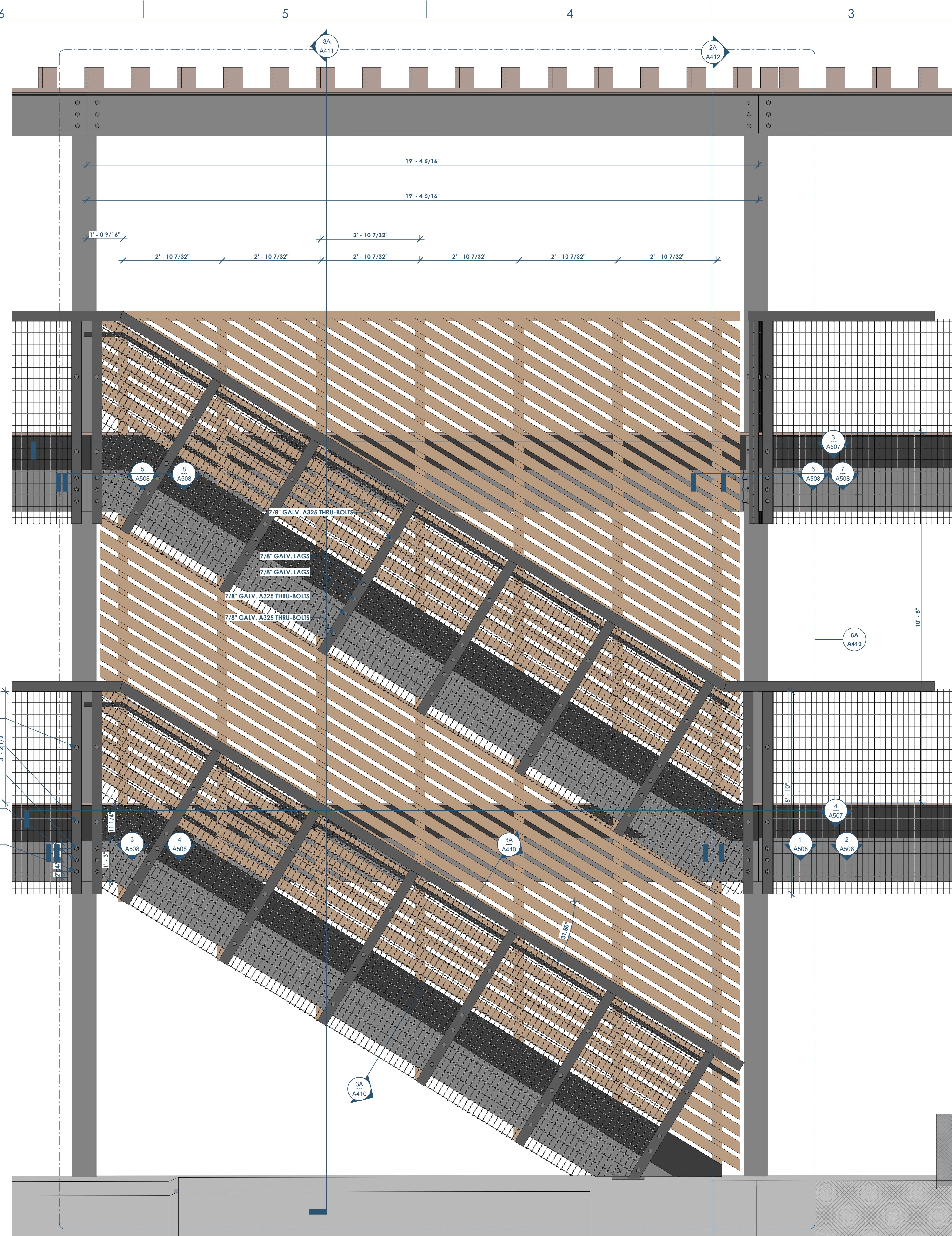
DUDDLEY
 Structural: Dudley
 Firm # 18677
 6102 Imperial Loop Drive
 College Station, TX 77845
 corieka@dudleyeng.com | (979) 777-0720

amc
 ENGINEERS
 MEP: AMC Engineers
 Texas Firm #9441
 508 E Jackson St # 552
 Burnet, TX 78611
 info@amcengineers.com | 512.535.6427

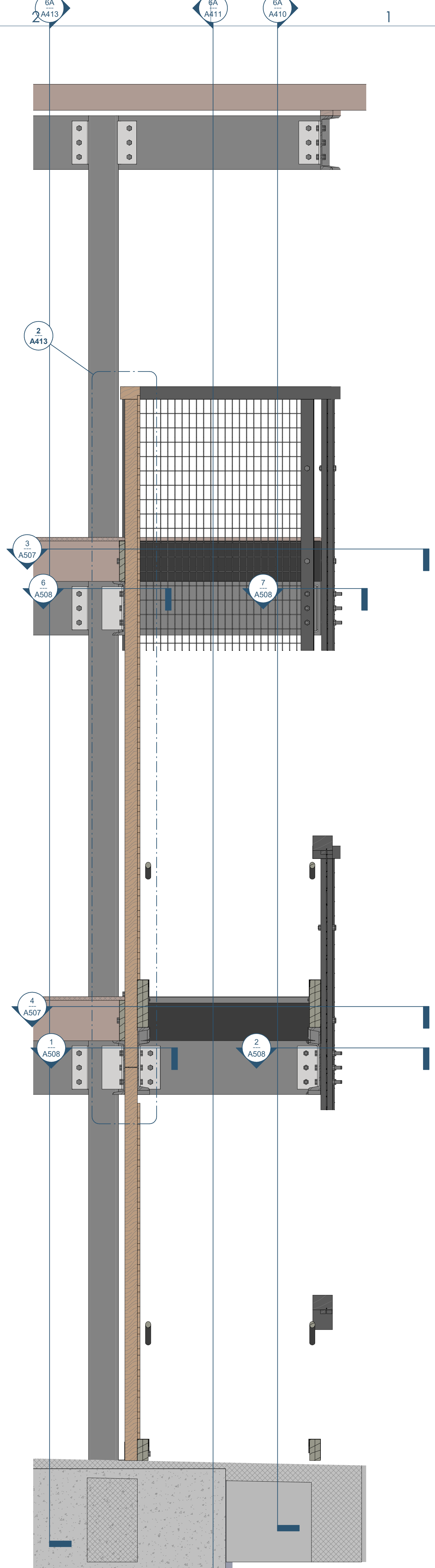
This project, like most OpeningDesign's projects, is open source. (Attribution-ShareAlike 4.0 International-CC BY-SA 4.0)-freely available to any party for future use, assuming the terms such as Attribution and ShareAlike are honored.

openingdesign
 Architect: OpeningDesign
 17 S Fairchild | FL 7
 Madison, WI 53703
 ryan@openingdesign.com | 773.425.6456

Date	Description
04/10/2022	Issued for Permit
08/26/2022	Permit Revisions
10/21/2022	Stair Details - Progress Set



6A A412 STAIR ELEVATION - LOOKING SOUTH
3/4" = 1'-0"



2A A412 STAIR SECTION - LOOKING EAST
3/4" = 1'-0"

Owner: Renovation Wranglers
102 E 26th St
Bryan, TX 77803
Kateneason@time.com | 979.450.9969

ARCHITECTURE
Architect of Record: LKB Architecture
2929 Allen Pkwy Suite 200
Houston, TX 77019
isa@lkbarchitecture.com | 713.425.3076

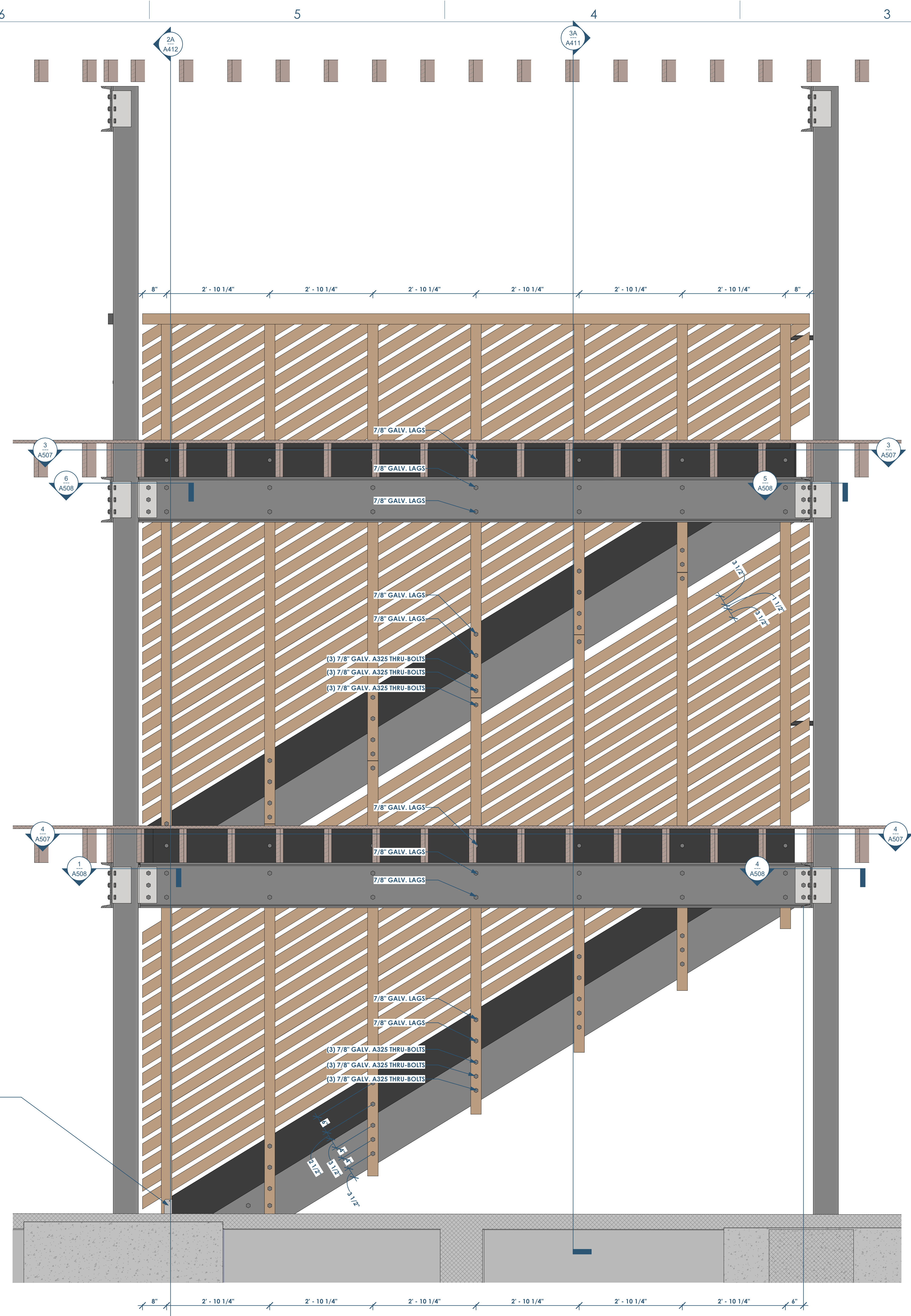
STRUCTURAL
Structural: Dudley
Firm# 18677
6102 Imperial Loop Drive
College Station, TX 77845
corleka@dudleyeng.com | (979) 777-0720

MEP
MEP: AMC Engineers
Texas Firm #9441
508 E Jackson St # 552
Burnet, TX 78611
info@amcengineers.com | 512.535.6427

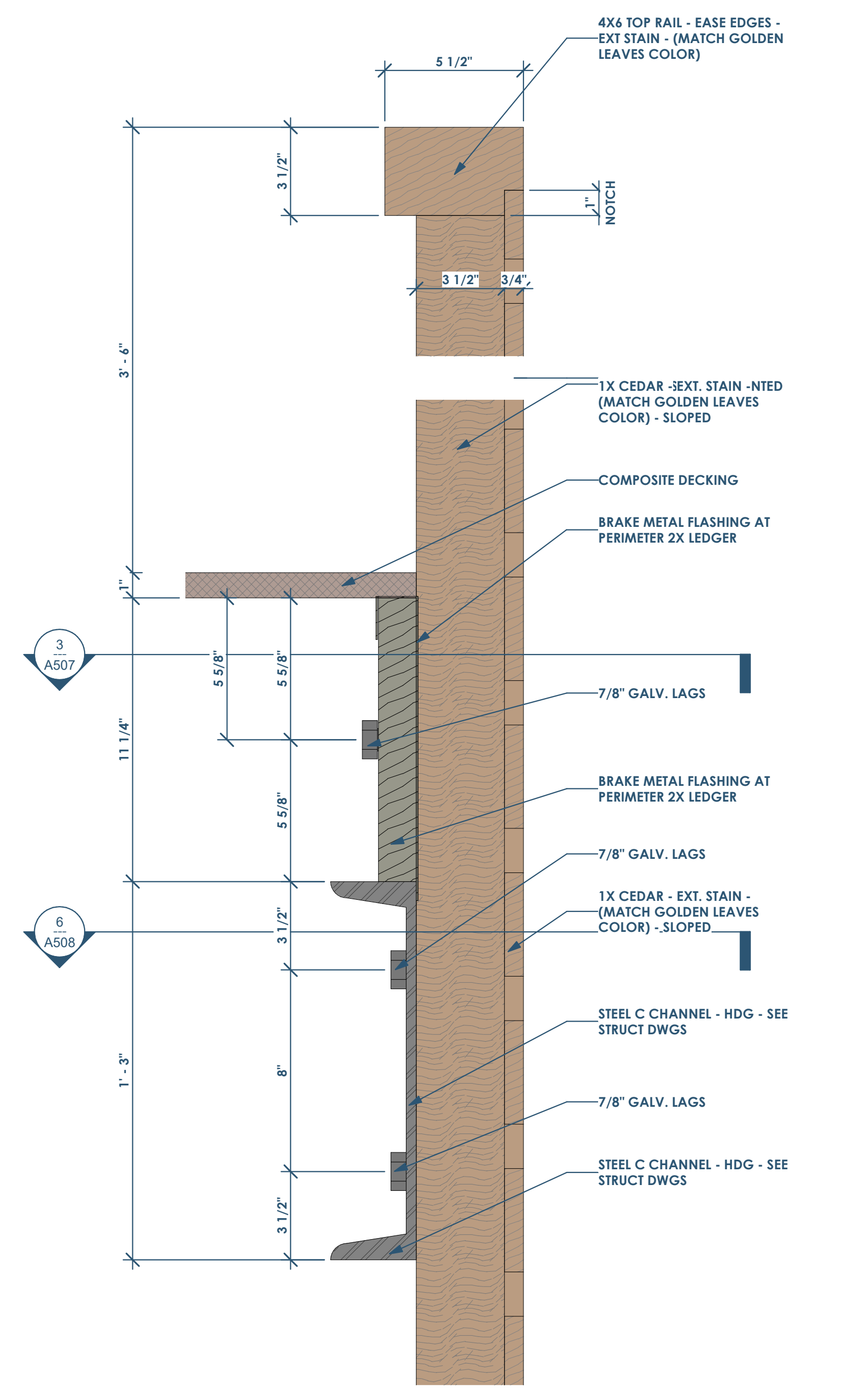
This project, like most OpeningDesign's projects, is open source (Attribution-ShareAlike 4.0 International-CC BY-SA 4.0)-freely available to any party for future use, assuming the terms such as Attribution and ShareAlike are honored.

openingdesign
Architect: OpeningDesign
17 S Fairchild | FL 7
Madison, WI 53703
ryan@openingdesign.com | 773.425.6456

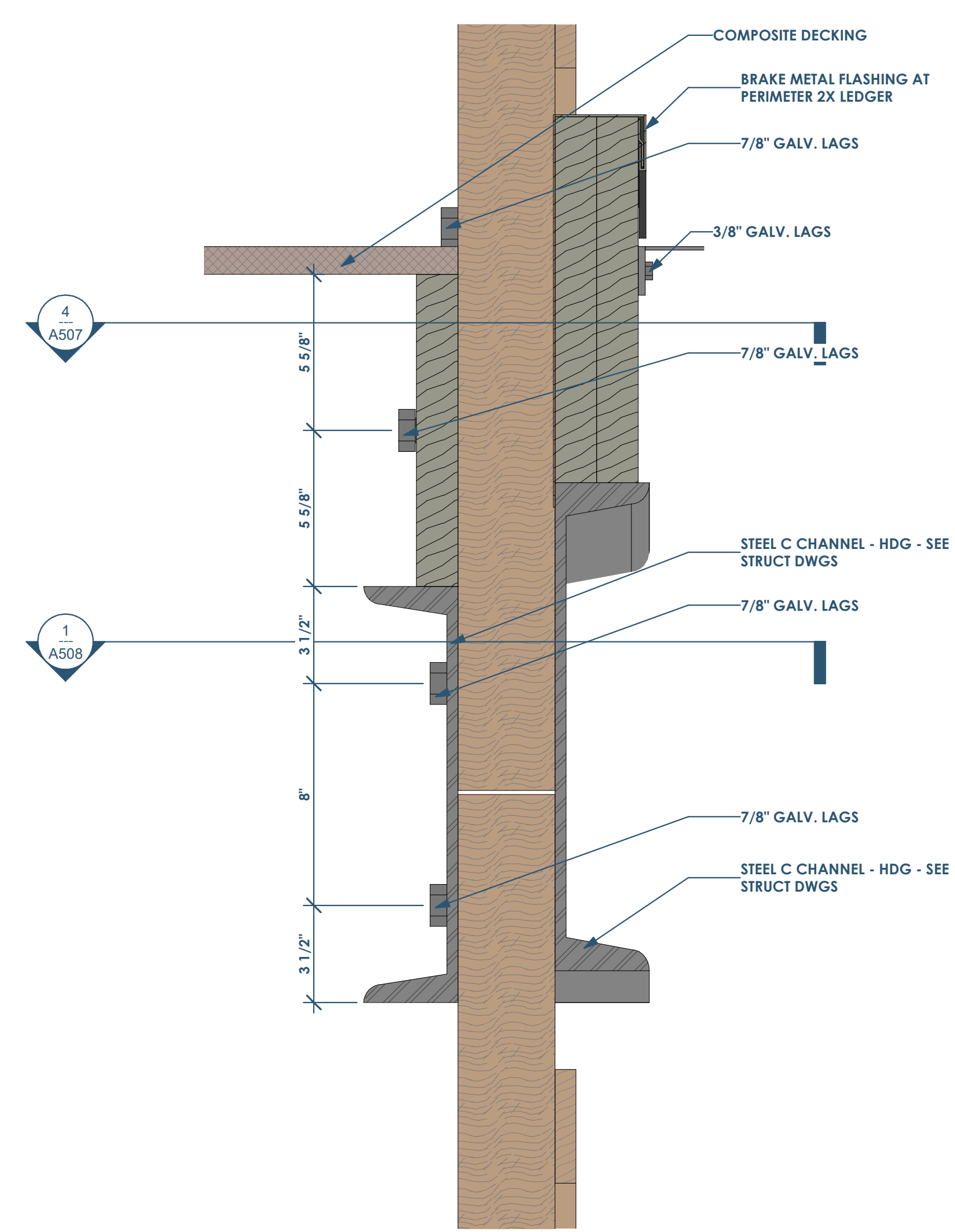
Date	Description
10/21/2022	Stair Details - Progress Set



6A A413 STAIR SECTION - AT BALCONY - LOOKING NORTH
3/4" = 1'-0"



2 A413 STAIR DETAIL - LOOKING EAST
3\"/>



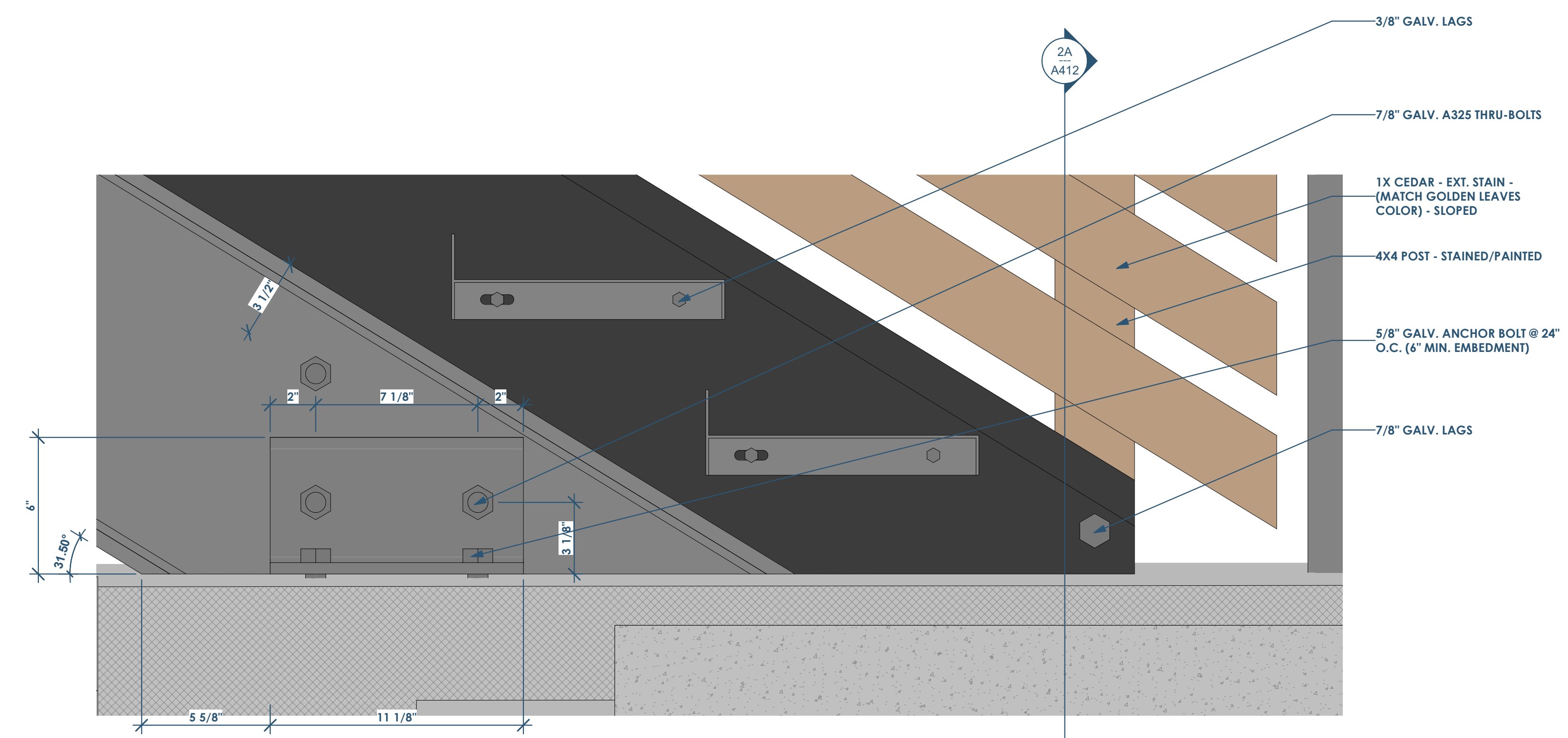
1 A507 STAIR DETAIL - LOOKING WEST
3\"/>

RENOVATION Wranglers
 Owner: Renovation Wranglers
 102 E 26th St
 Bryan, TX 77803
 Katerineasonline.com | 979.450.9969

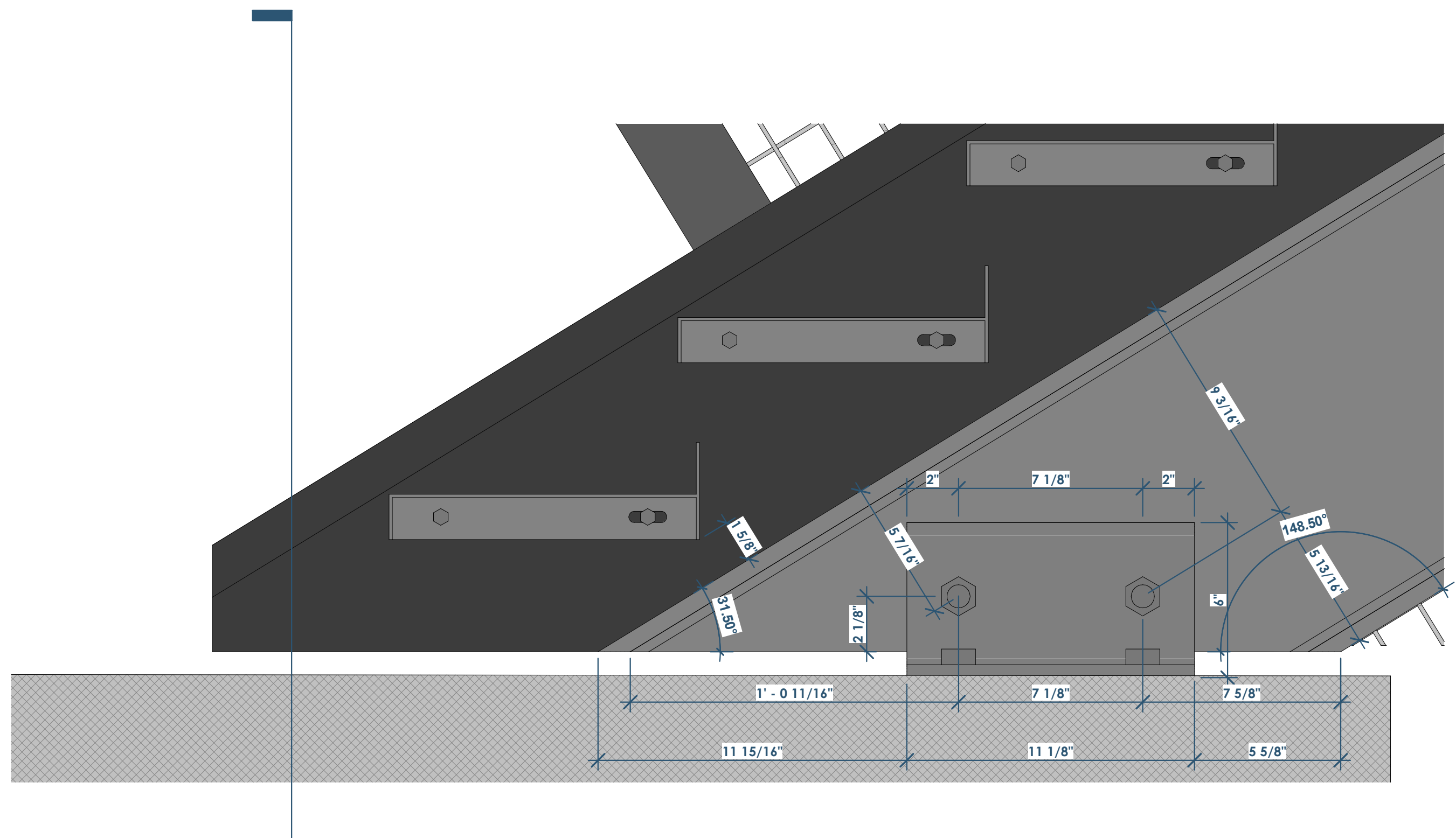
LKB ARCHITECTURE
 Architect of Record: LKB Architecture
 2929 Allen Pkwy Suite 200
 Houston, TX 77019
 isa@lkbarchitecture.com | 713.425.3076

DUDDLEY
 Structural: Dudley
 Firm # 18677
 6102 Imperial Loop Drive
 College Station, TX 77845
 corieka@dudleyeng.com | (979) 777-0720

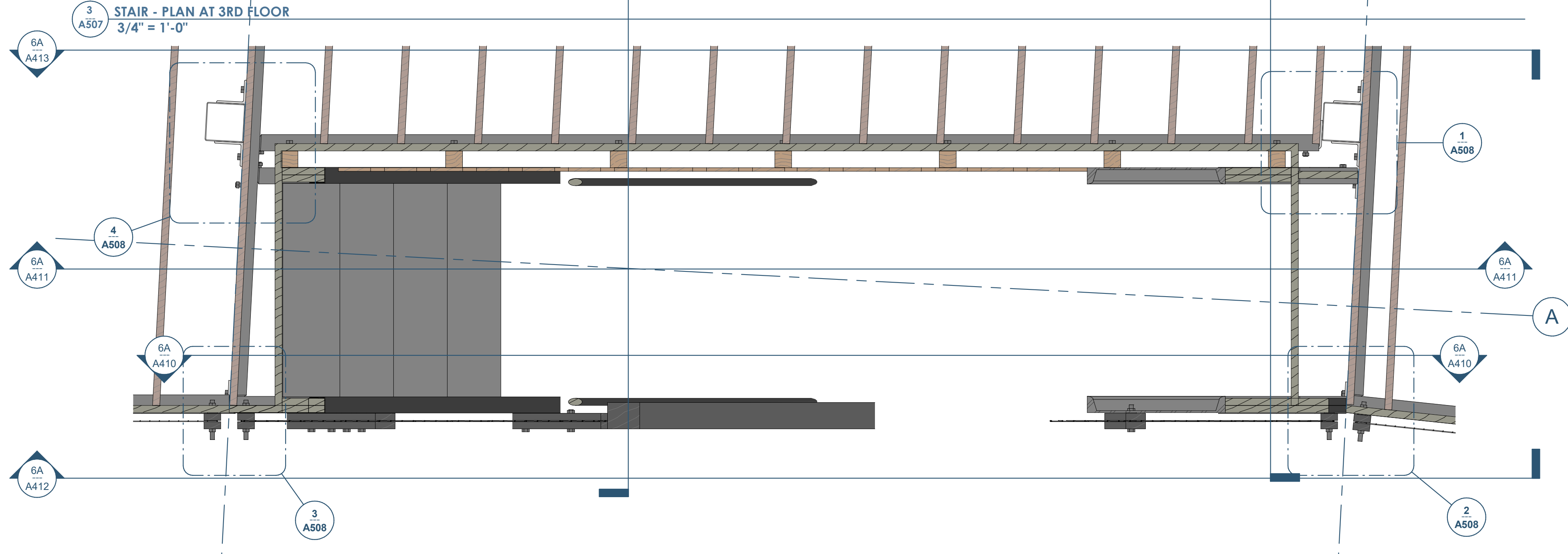
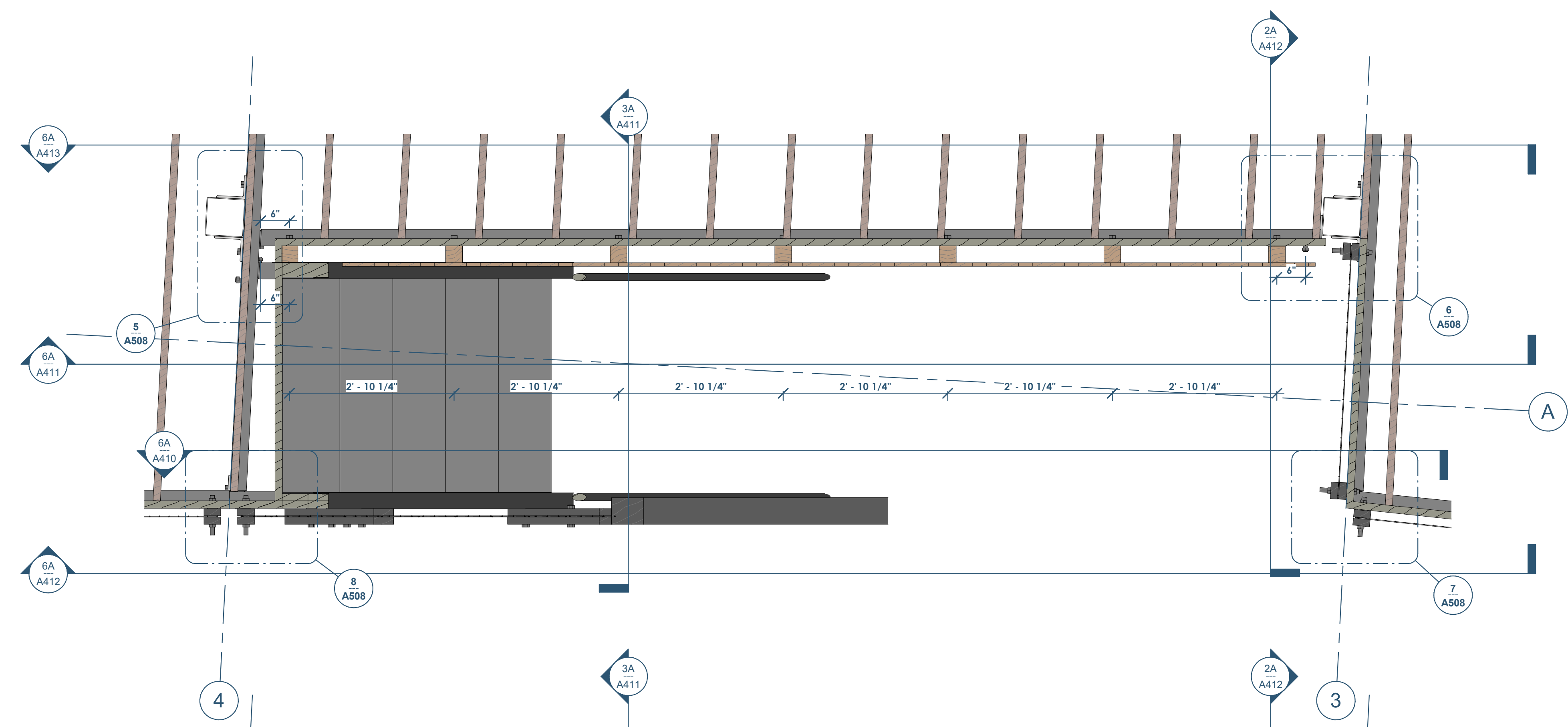
amc ENGINEERS
 MEP: AMC Engineers
 Texas Firm #9441
 508 E Jackson St # 552
 Burnet, TX 78611
 info@amcengineers.com | 512.535.6427



3D A507 STAIR DETAIL AT BASE OF STAIR - LOOKING SOUTH
3" = 1'-0"



3D A507 STAIR DETAIL AT BASE OF STAIR - LOOKING NORTH
3" = 1'-0"



3A A411 STAIR - PLAN AT 3RD FLOOR
3/4" = 1'-0"

3A A411 STAIR - PLAN AT 2ND FLOOR
3/4" = 1'-0"



3A A411 STAIR - 3D - PERSPECTIVE

This project, like most OpeningDesign's projects, is open source (Attribution-ShareAlike 4.0 International-CC BY-SA 4.0)-freely available to any party for future use, assuming the terms such as Attribution and ShareAlike are honored.

openingdesign
 Architect: OpeningDesign
 17 S Fairchild | FL 7
 Madison, WI 53703
 ryan@openingdesign.com | 773.425.6456

Date	Description
10/21/2022	Stair Details - Progress Set

RENOVATION
Wranglers
ENGINEERS

Owner: Renovation Wranglers
102 E 26th St
Bryan, TX 77803
Kateneason@rwr.com | 979.450.9969

LKB
ARCHITECTURE

Architect of Record: LKB Architecture
2929 Allen Pkwy Suite 200
Houston, TX 77019
isa@lkbarchitecture.com | 713.425.3076

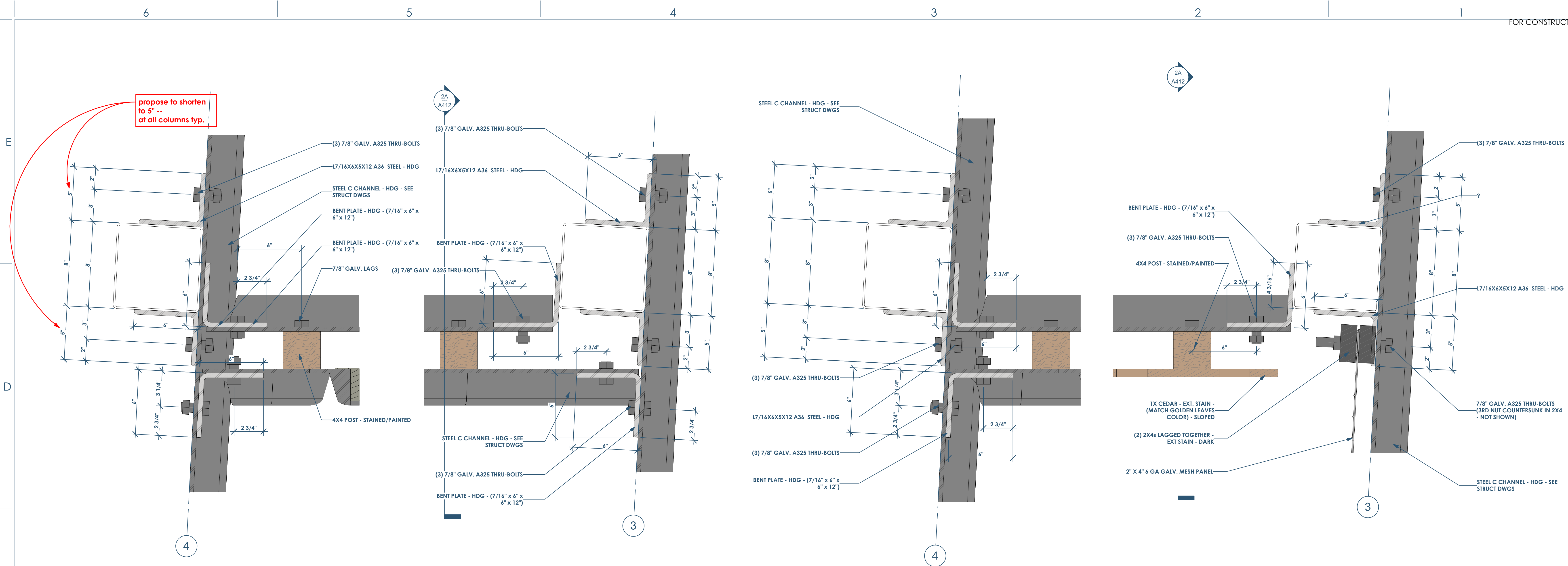
DUDDLEY
STRUCTURAL

Structural: Dudley
Firm # 18677
6102 Imperial Loop Drive
College Station, TX 77845
corleka@dudleyeng.com | (979) 777-0720

amc
ENGINEERS

MEP: AMC Engineers
Texas Firm #9441
508 E Jackson St # 552
Burnet, TX 78611
info@amcengineers.com | 512.535.6427

This project, like most OpeningDesign's projects, is open source (Attribution-ShareAlike 4.0 International-CC BY-SA 4.0)-freely available to any party for future use, assuming the terms such as Attribution and ShareAlike are honored.

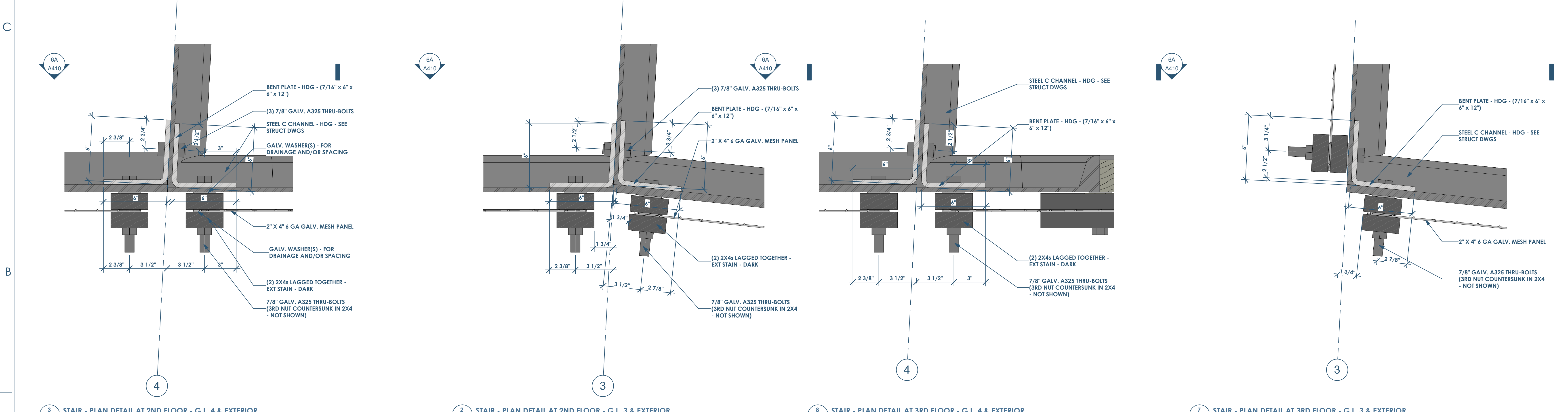


4 A508 STAIR - PLAN DETAIL AT 2ND FLOOR - G.L. 4 & COLUMN 3" = 1'-0"

1 A508 STAIR - PLAN DETAIL AT 2ND FLOOR - G.L. 3 & COLUMN 3" = 1'-0"

5 A508 STAIR - PLAN DETAIL AT 3RD FLOOR - G.L. 4 & COLUMN 3" = 1'-0"

4 A508 STAIR - PLAN DETAIL AT 3RD FLOOR - G.L. 3 & COLUMN 3" = 1'-0"



3 A508 STAIR - PLAN DETAIL AT 2ND FLOOR - G.L. 4 & EXTERIOR 3" = 1'-0"

2 A508 STAIR - PLAN DETAIL AT 2ND FLOOR - G.L. 3 & EXTERIOR 3" = 1'-0"

8 A508 STAIR - PLAN DETAIL AT 3RD FLOOR - G.L. 4 & EXTERIOR 3" = 1'-0"

7 A508 STAIR - PLAN DETAIL AT 3RD FLOOR - G.L. 3 & EXTERIOR 3" = 1'-0"

Date	Description
10/21/2022	Stair Details - Progress Set

openingdesign

Architect: OpeningDesign
17 S Fairchild | FL 7
Madison, WI 53703
ryan@openingdesign.com | 773.425.6456