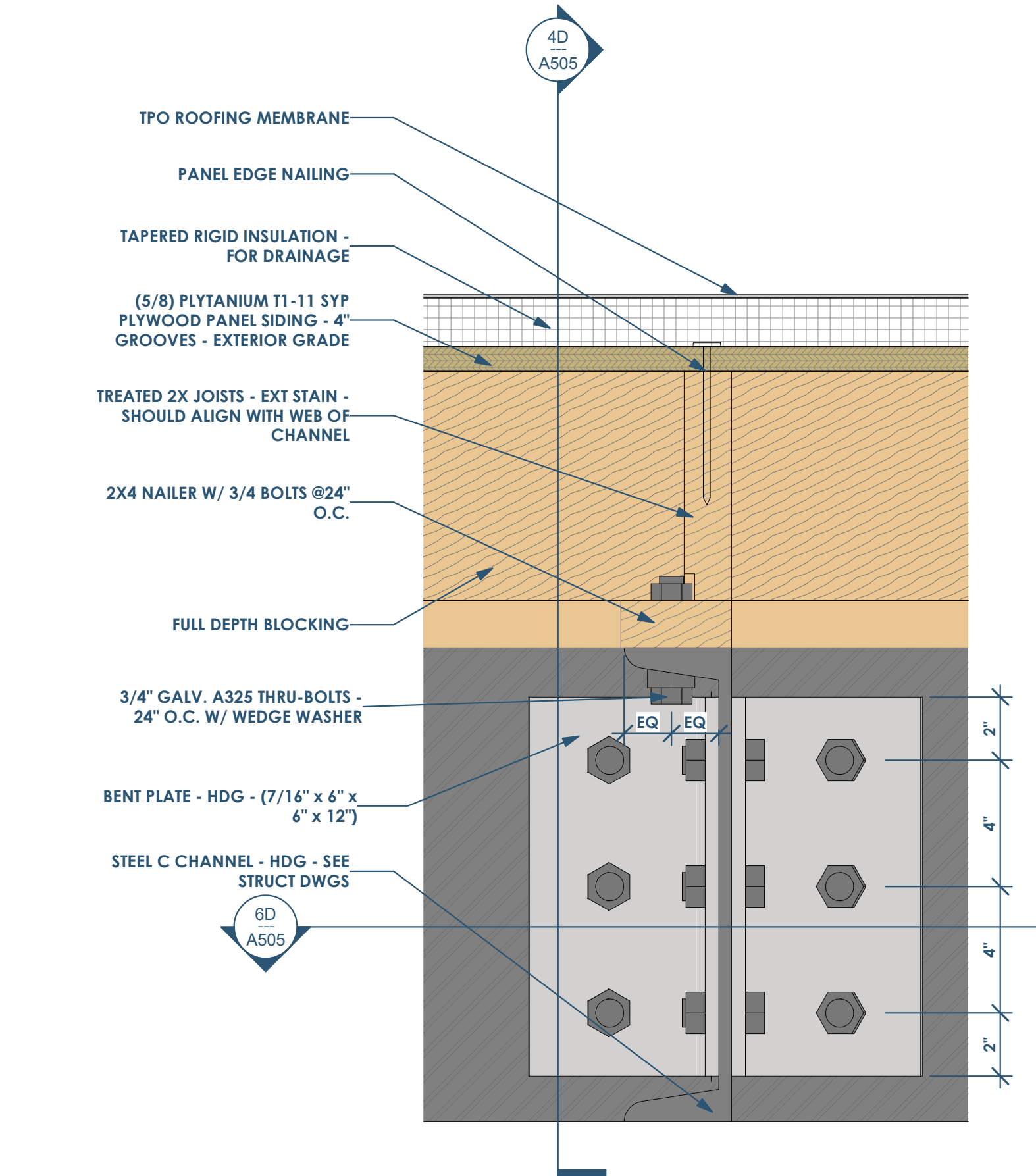
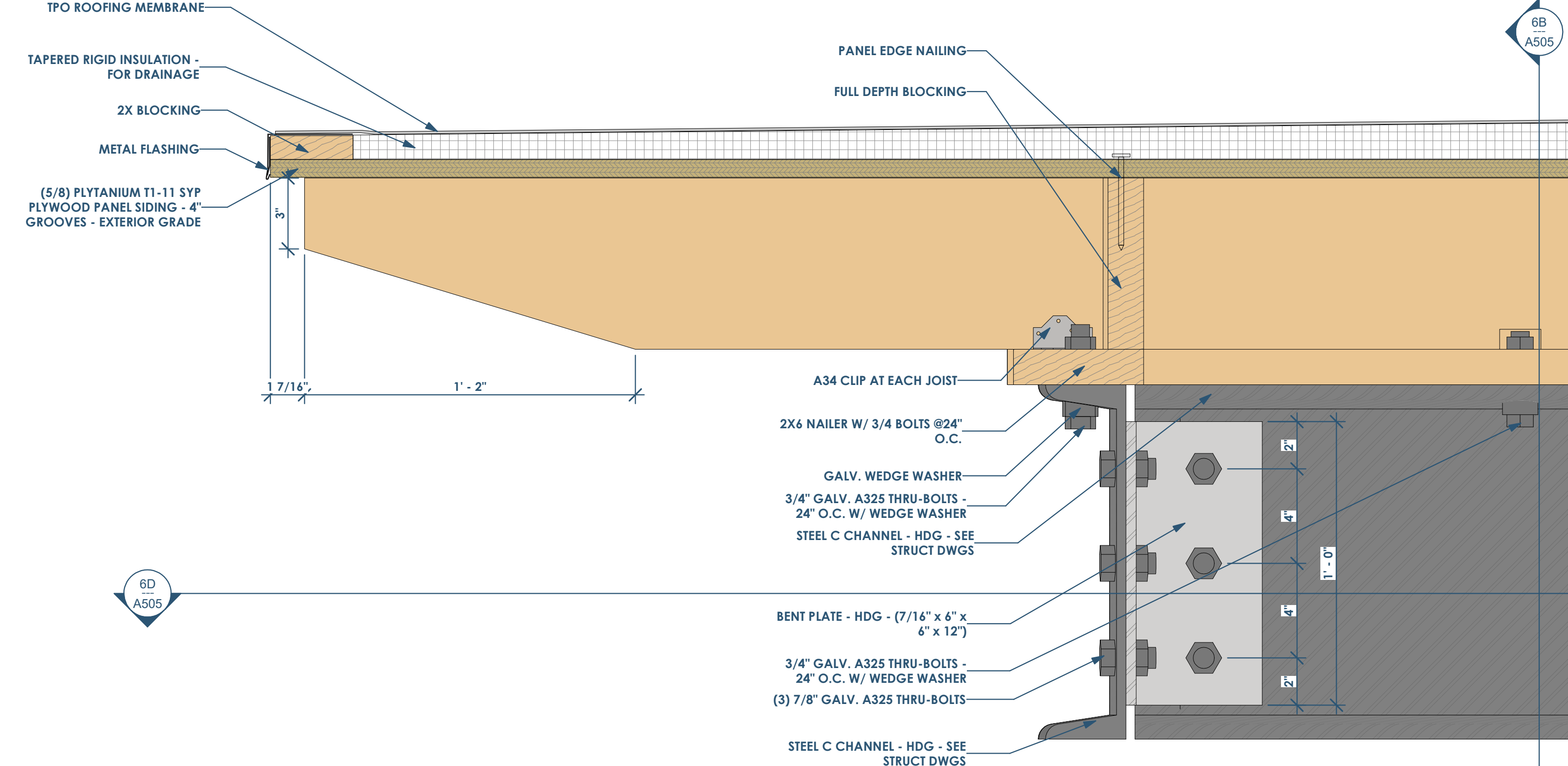


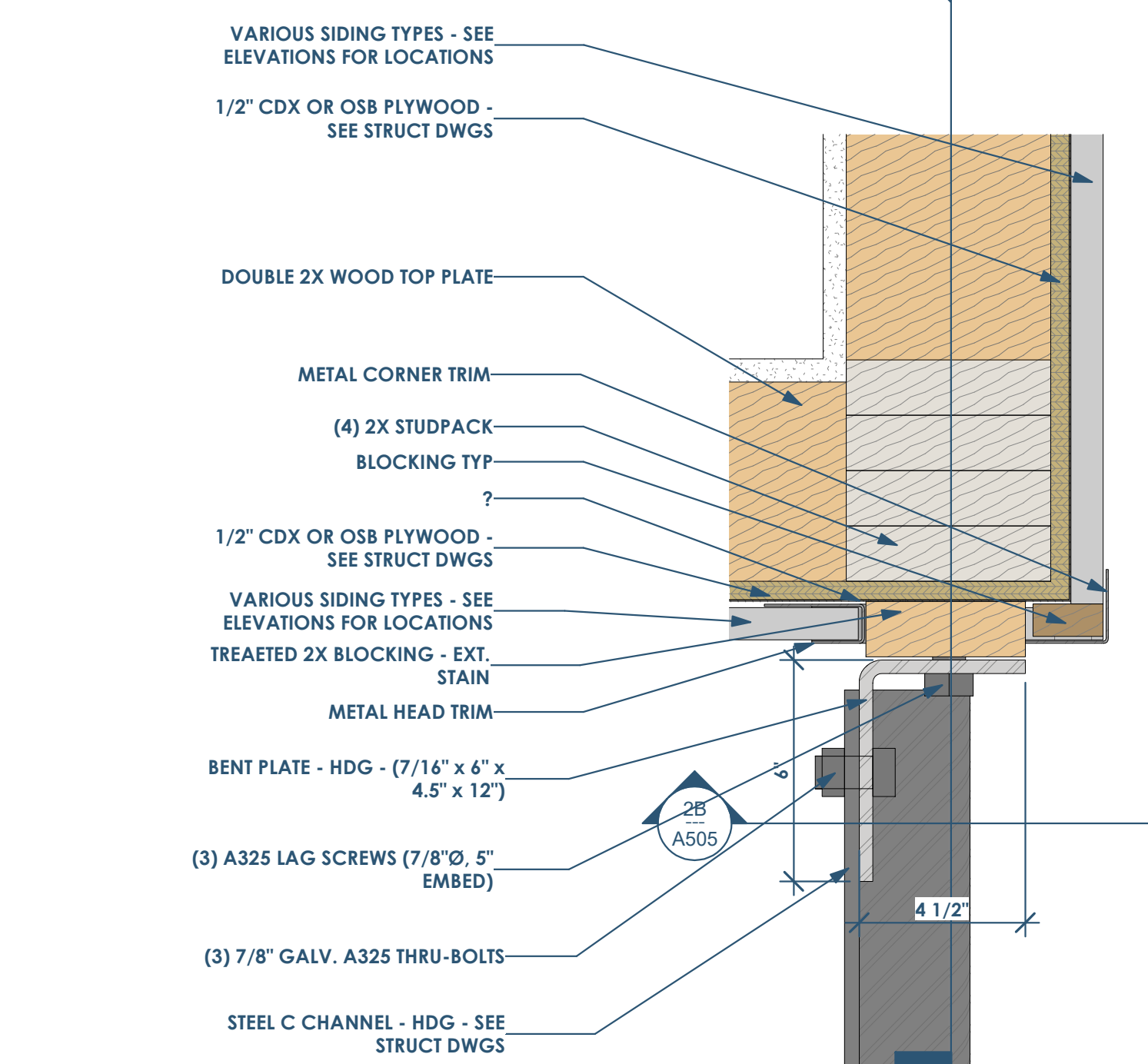
4D A505 DETAIL - ROOF - C CHANNEL PLAN  
3" = 1'-0"



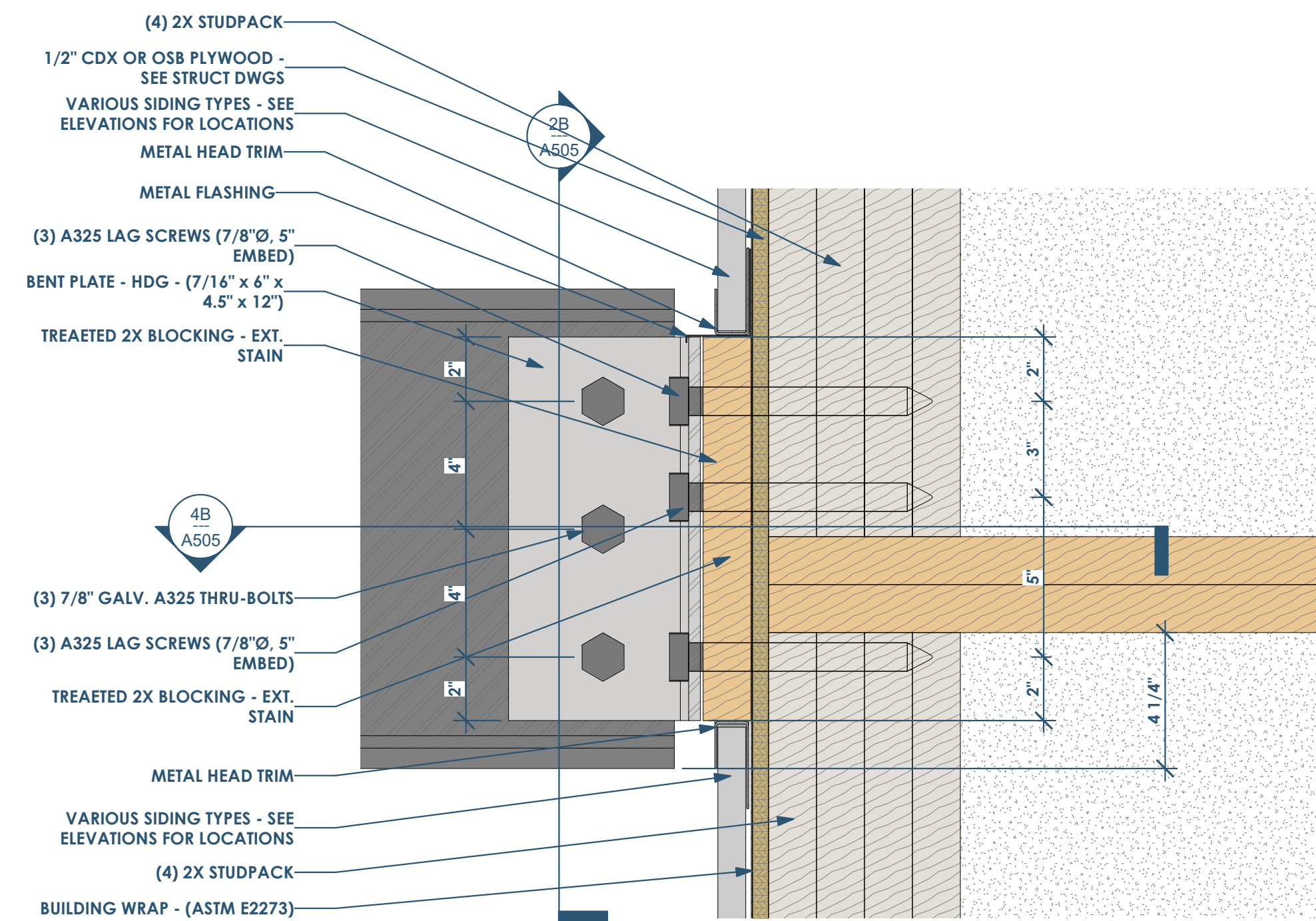
6D A505 DETAIL - ROOF - C CHANNEL SECTION 1  
3" = 1'-0"



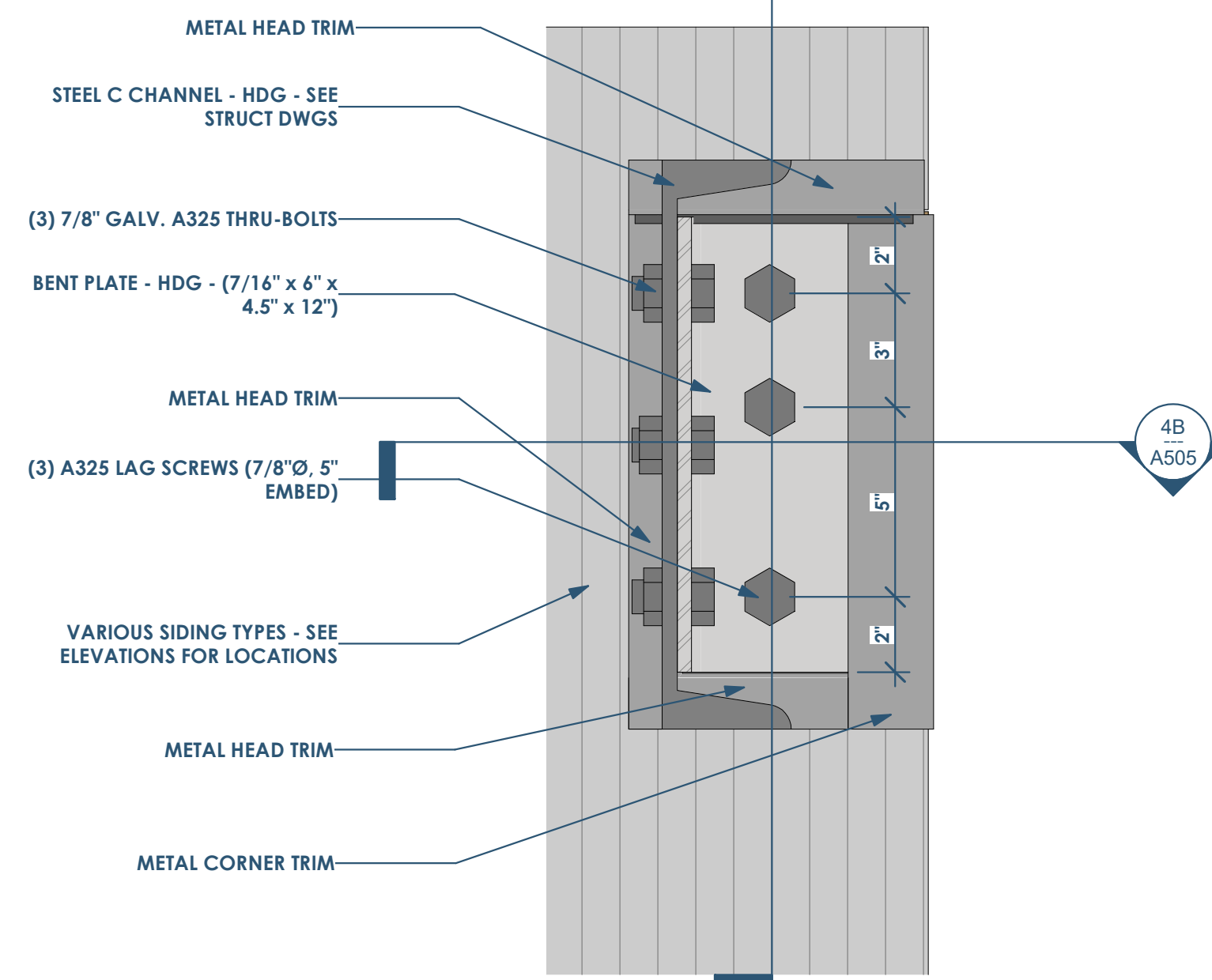
4D A505 DETAIL - ROOF - C CHANNEL SECTION 2  
3" = 1'-0"



4B A505 DETAIL - ROOF 2 - C CHANNEL SECTION 1  
3" = 1'-0"



4A A505 DETAIL - ROOF 2 - C CHANNEL SECTION 2  
3" = 1'-0"



2B A505 DETAIL - ROOF 2 - C CHANNEL - SECTION 2  
3" = 1'-0"



Owner: Renovation Wranglers  
102 E 26th St  
Bryan, TX 77803  
katheneason@me.com | 979.450.9969

ARCHITECTURE  
Architect of Record: LKB Architecture  
2929 Allen Pkwy Suite 200  
Houston, TX 77019  
lisa@lkbarchitecture.com | 713.425.3076

STRUCTURE  
Structural: Dudley  
Firm # 18677  
6102 Imperial Loop Drive  
College Station, TX 77845  
cooleka@dudleyeng.com | (979) 777-0720

MEP: AMC Engineers  
Texas Firm #9441  
508 E Jackson St # 552  
Bumel, TX 78611  
info@amcengineers.com | 512.535.6427

This project, like most OpeningDesign's projects, is open source. (Attribution-ShareAlike.4.0 International-CC BY-SA 4.0)-freely available to any party for future use, assuming the terms such as Attribution and ShareAlike are honored.

openingdesign  
Architect: OpeningDesign  
17 S Fairchild | FL 7  
Madison, WI 53703  
ryan@openingdesign.com | 773.425.6456

Date	Description
04/10/2022	Issued for Permit
08/26/2022	Permit Revisions