

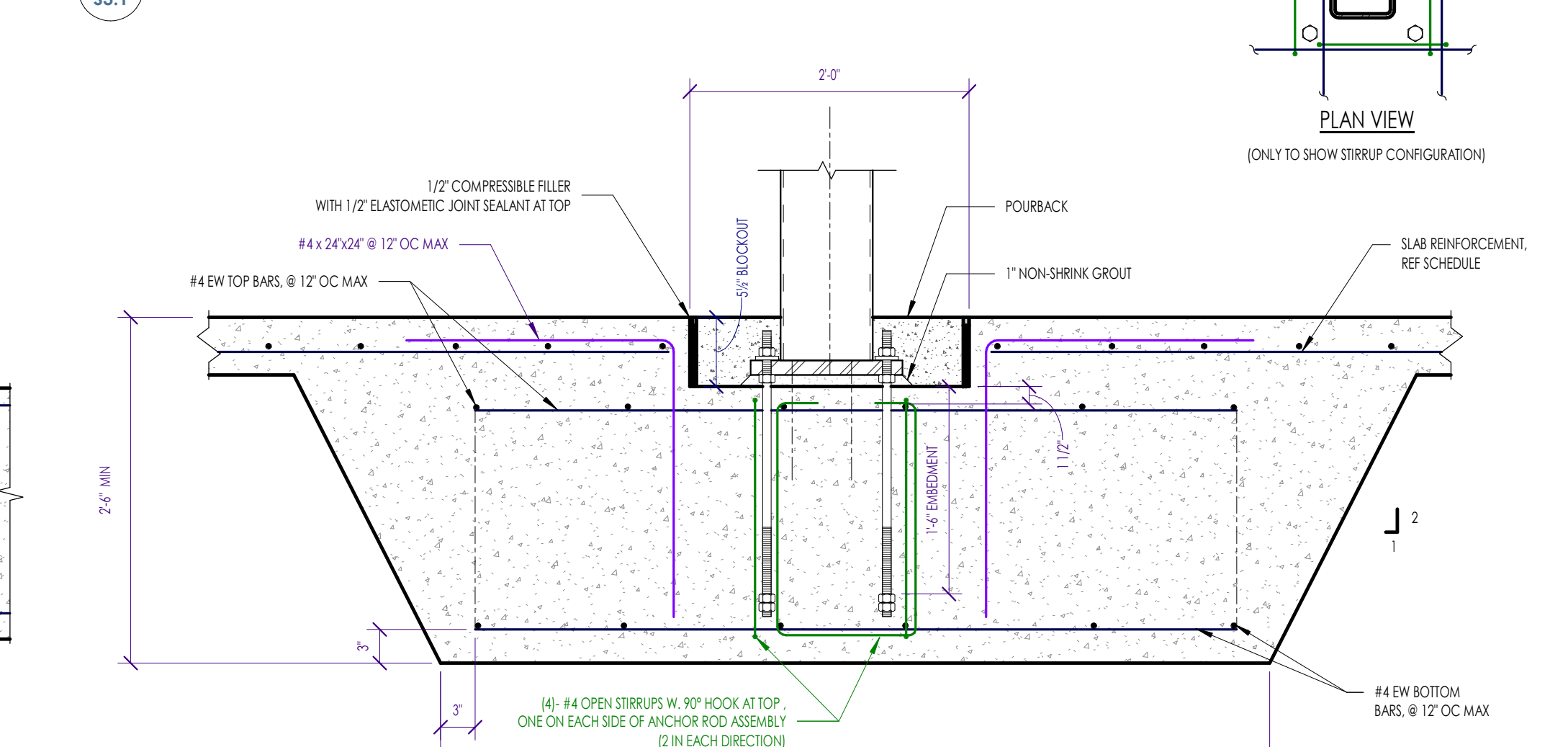
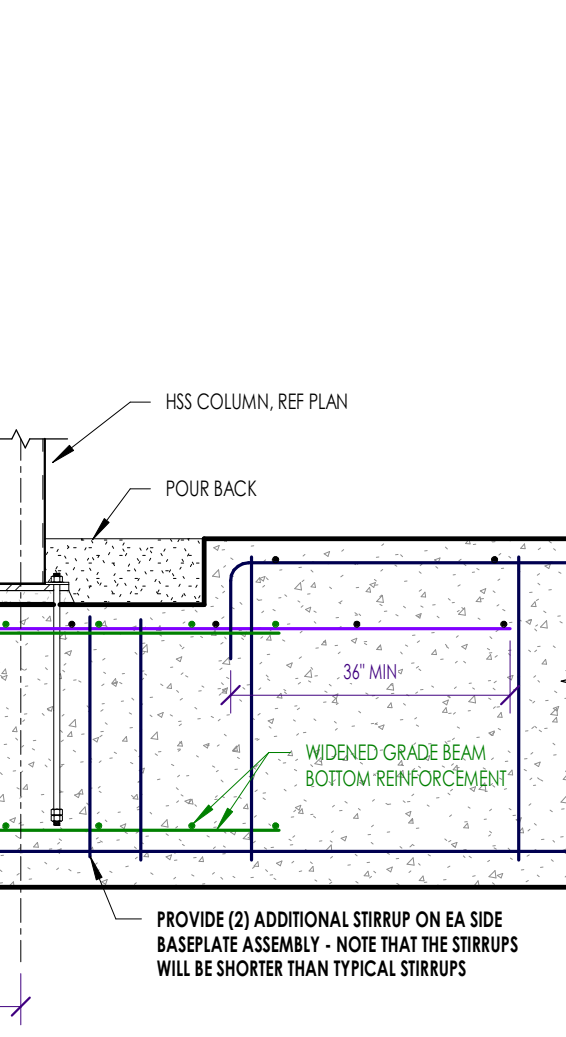
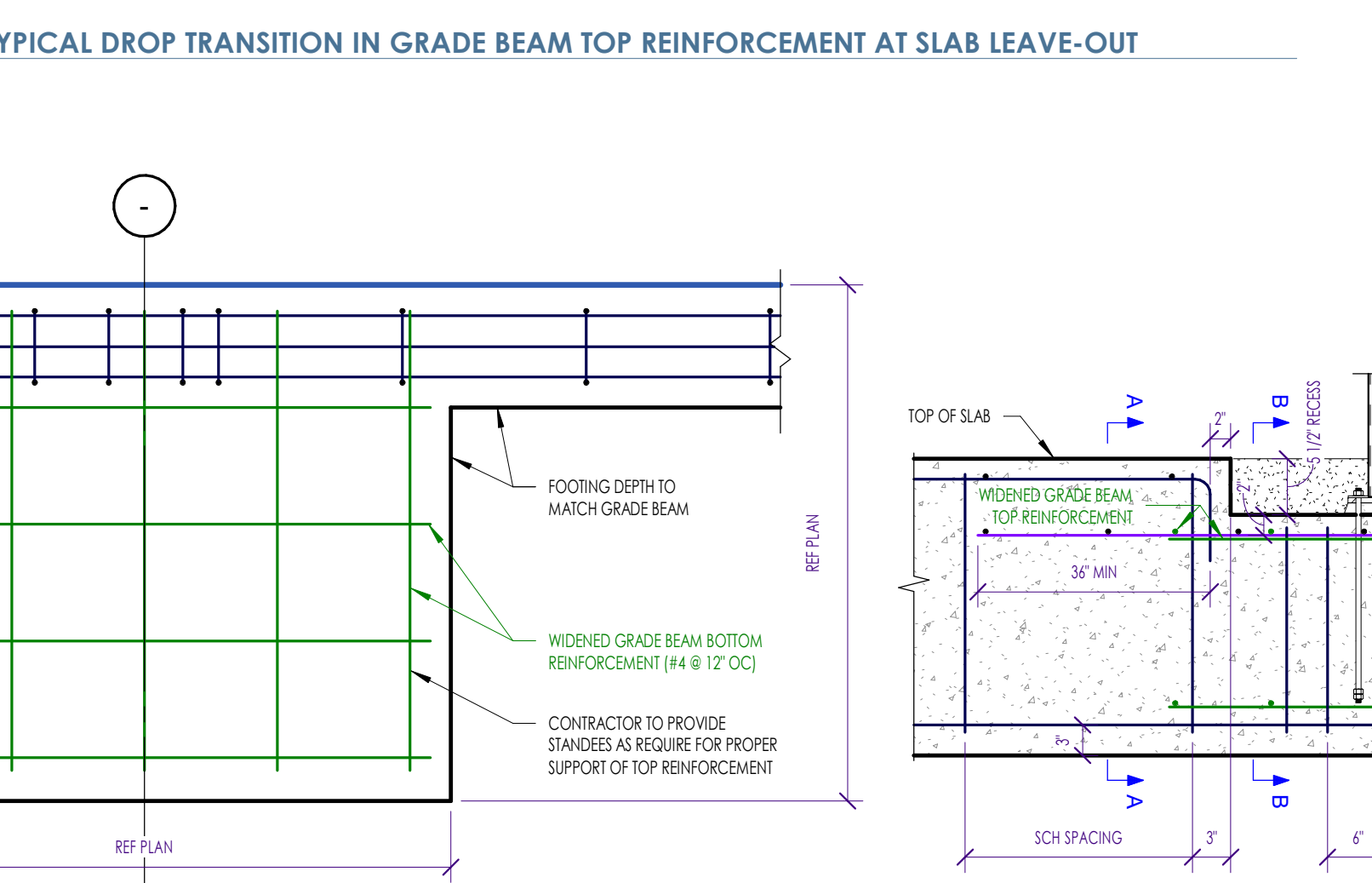
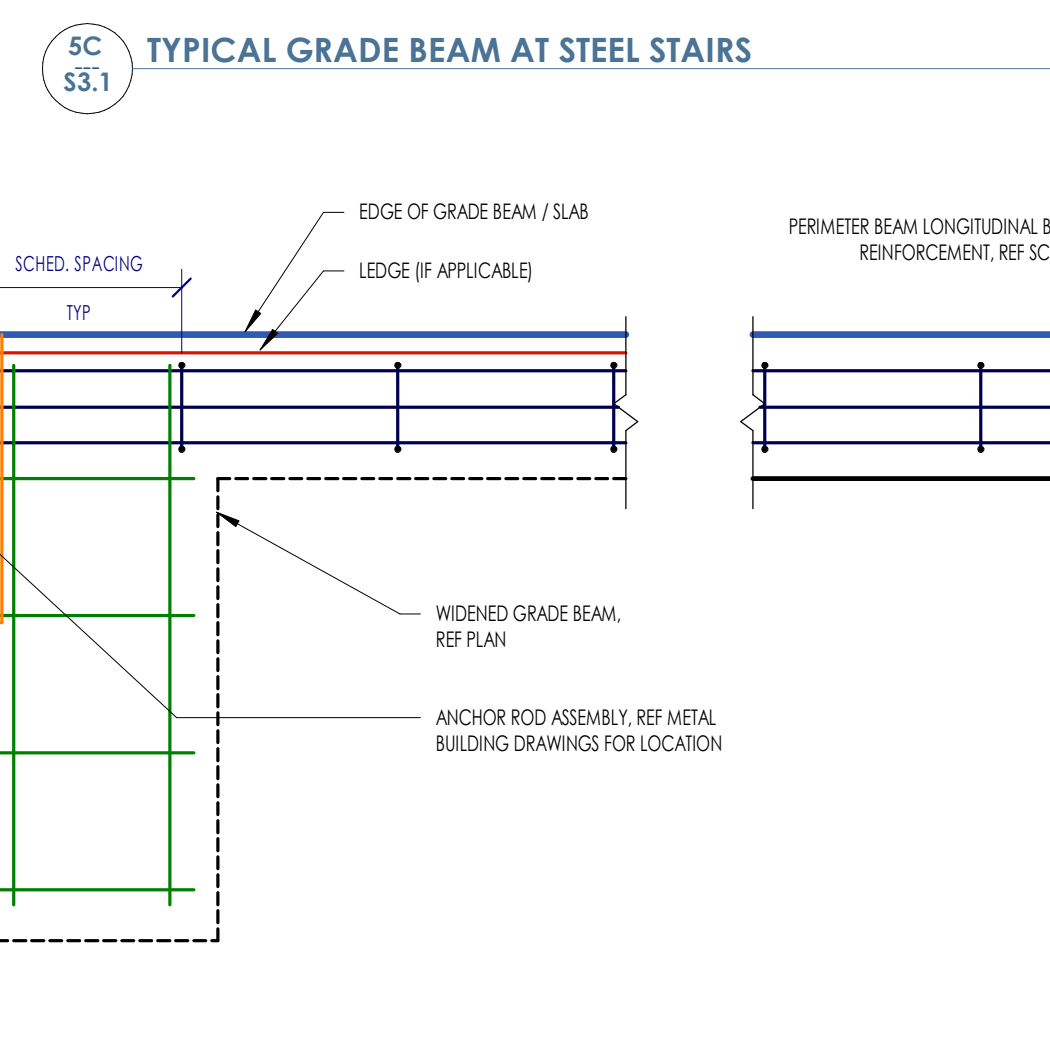
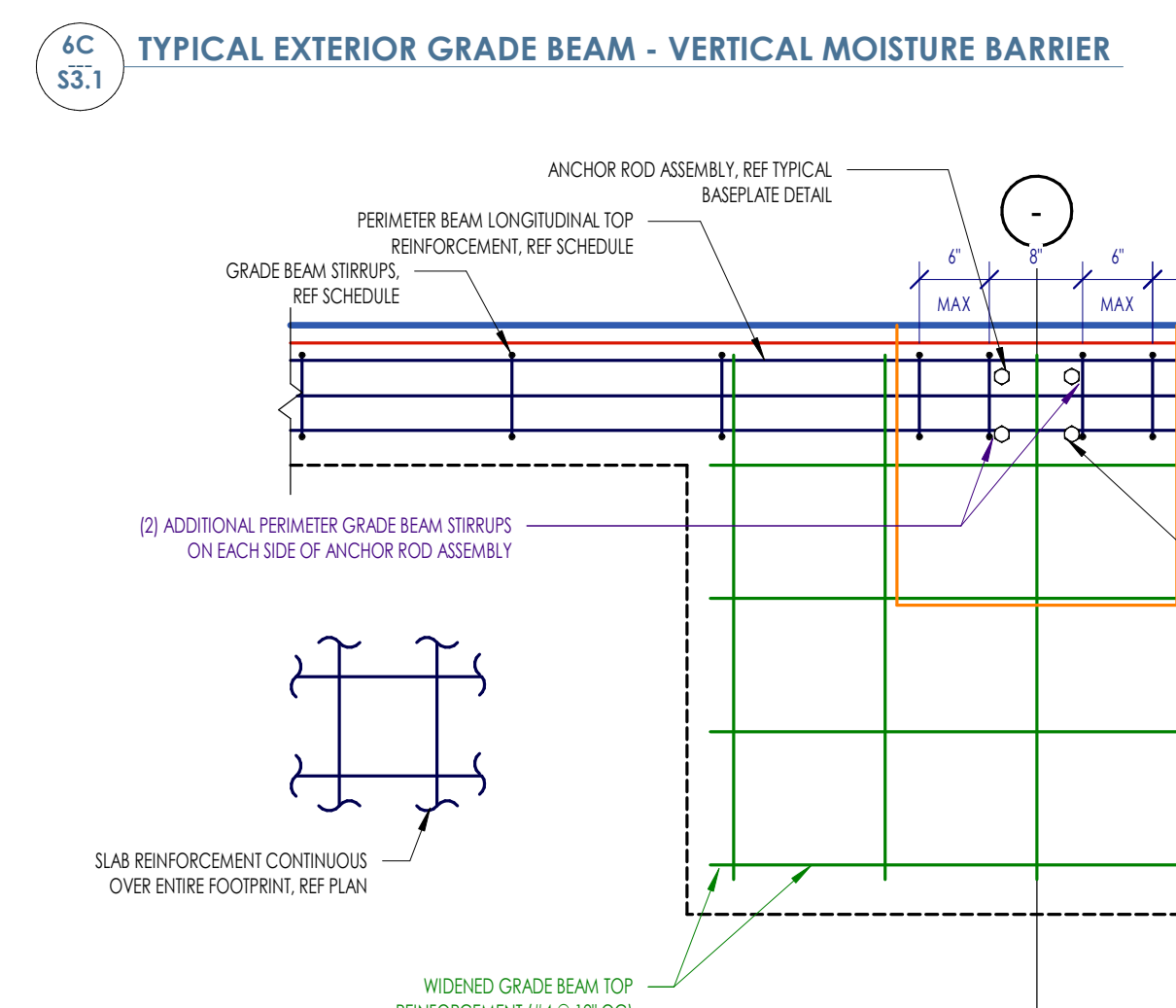
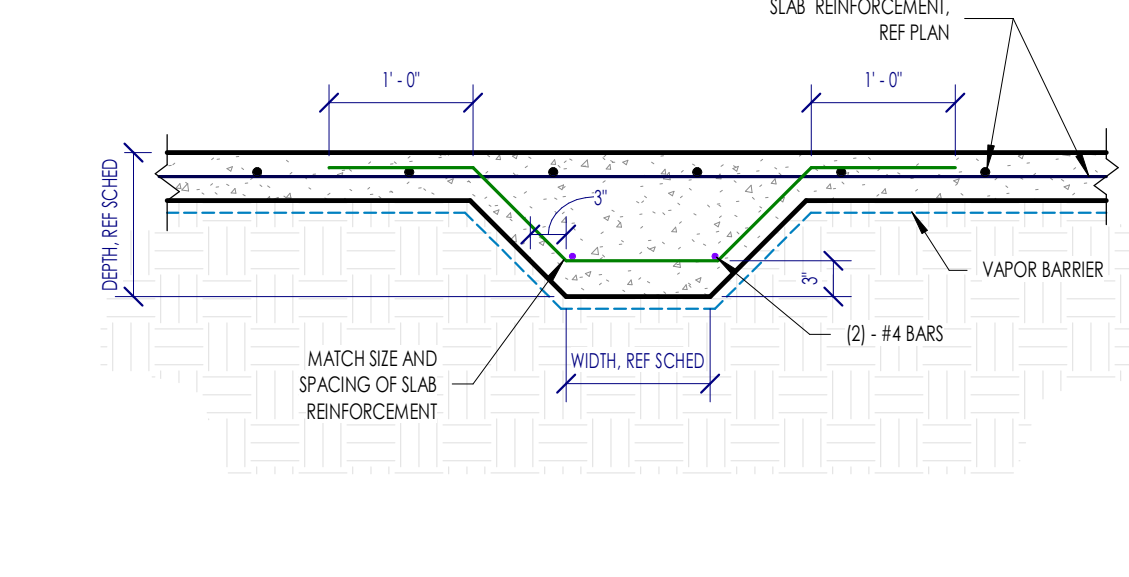
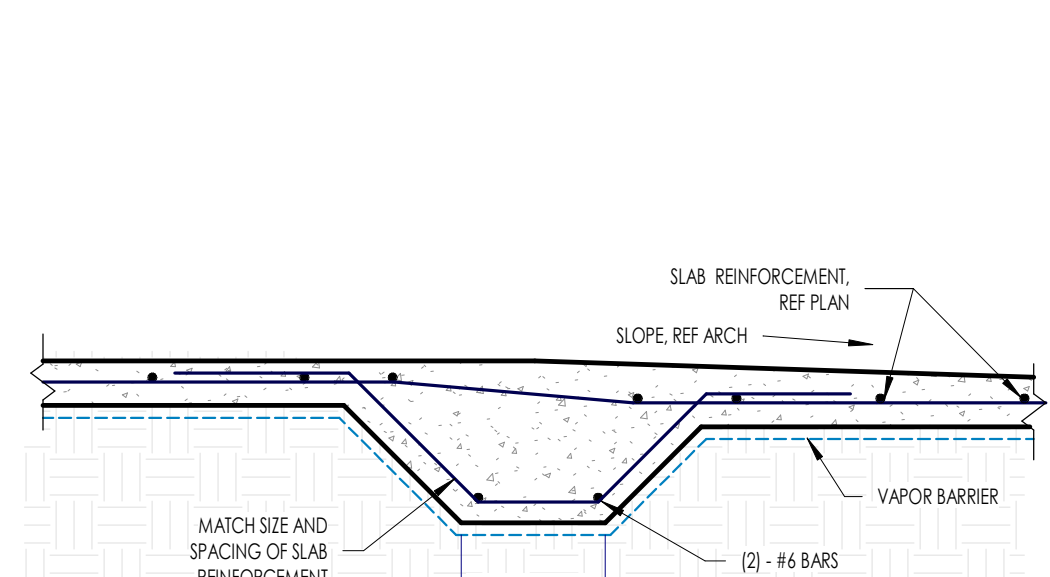
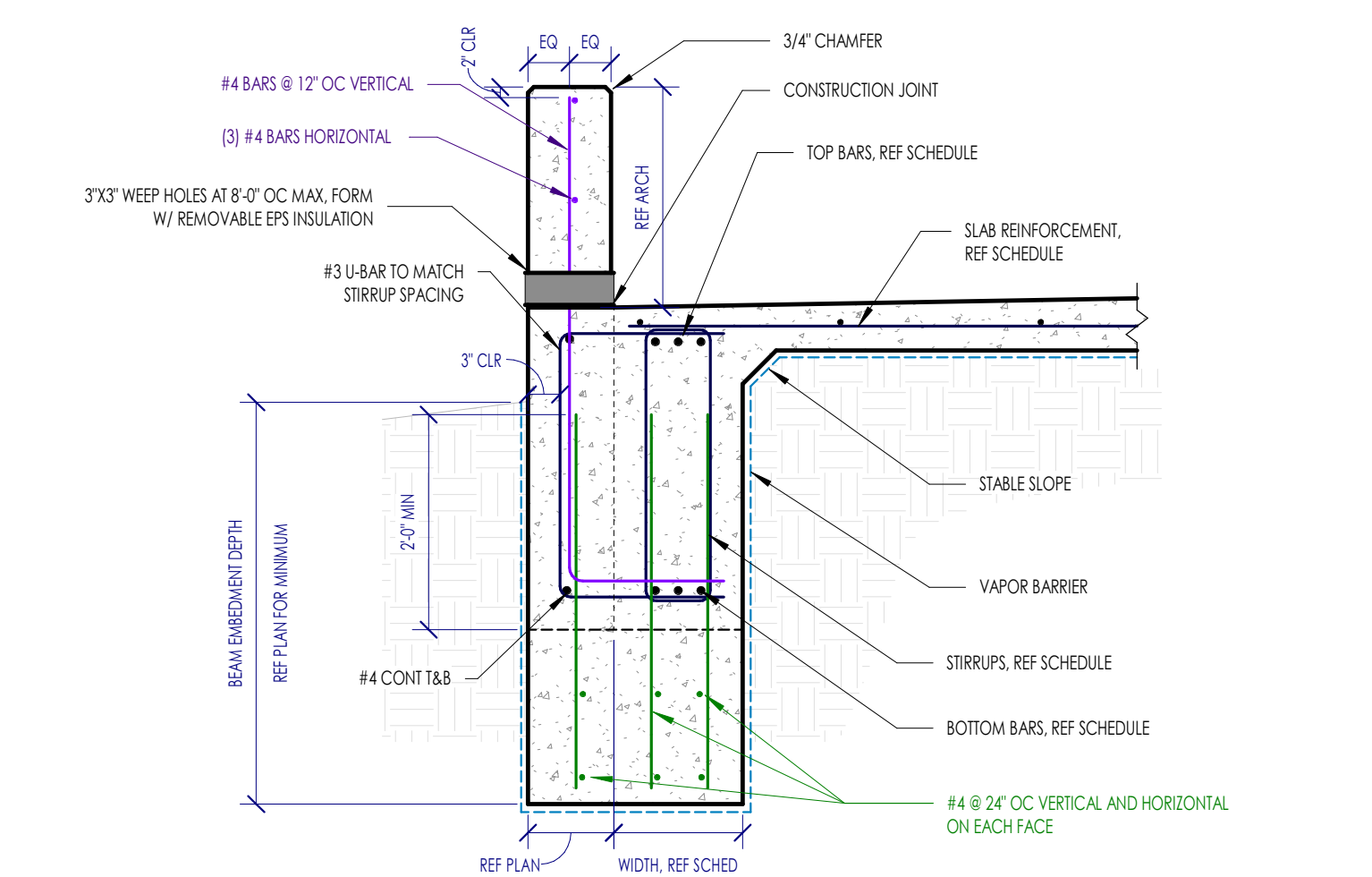
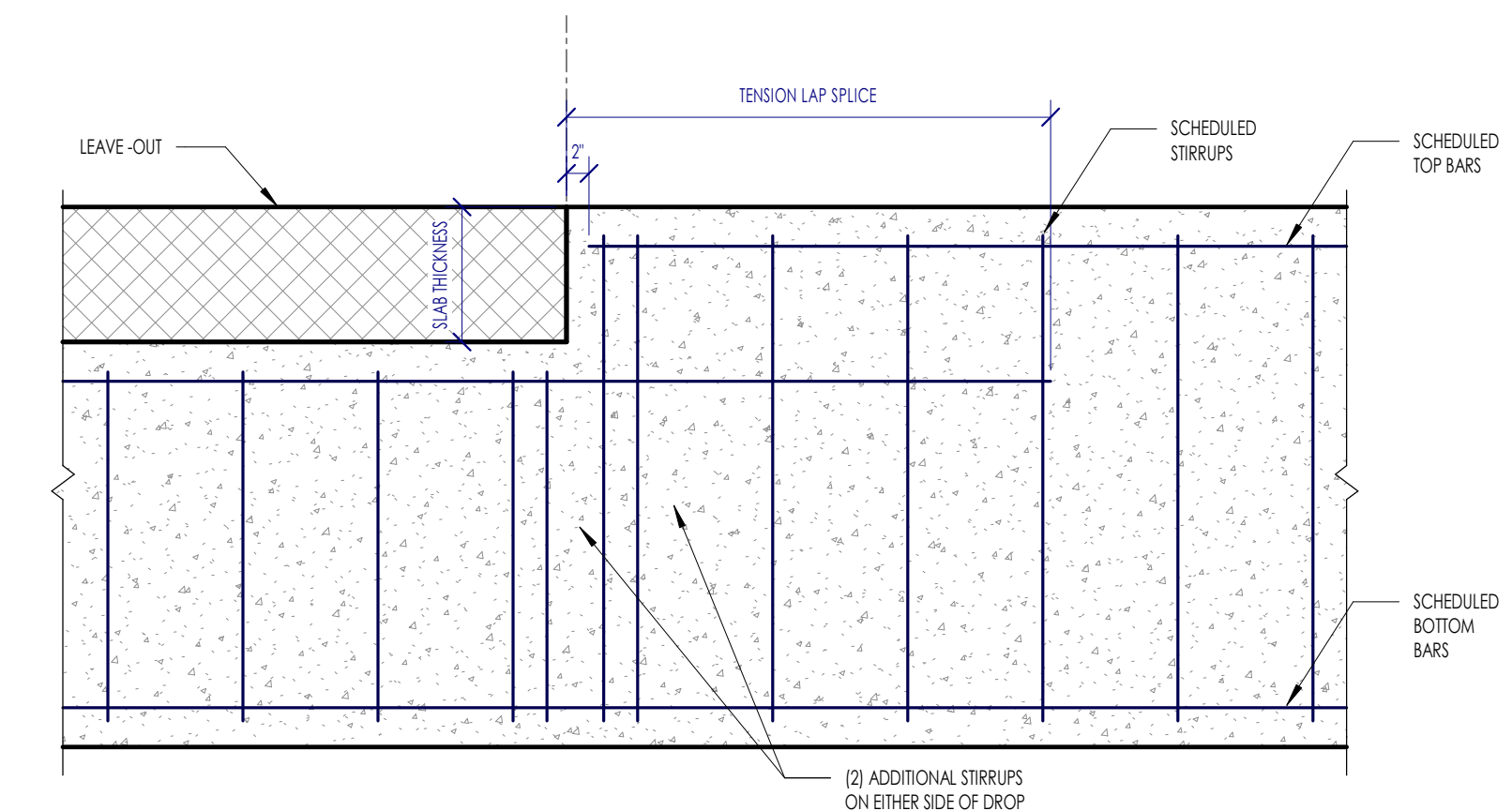
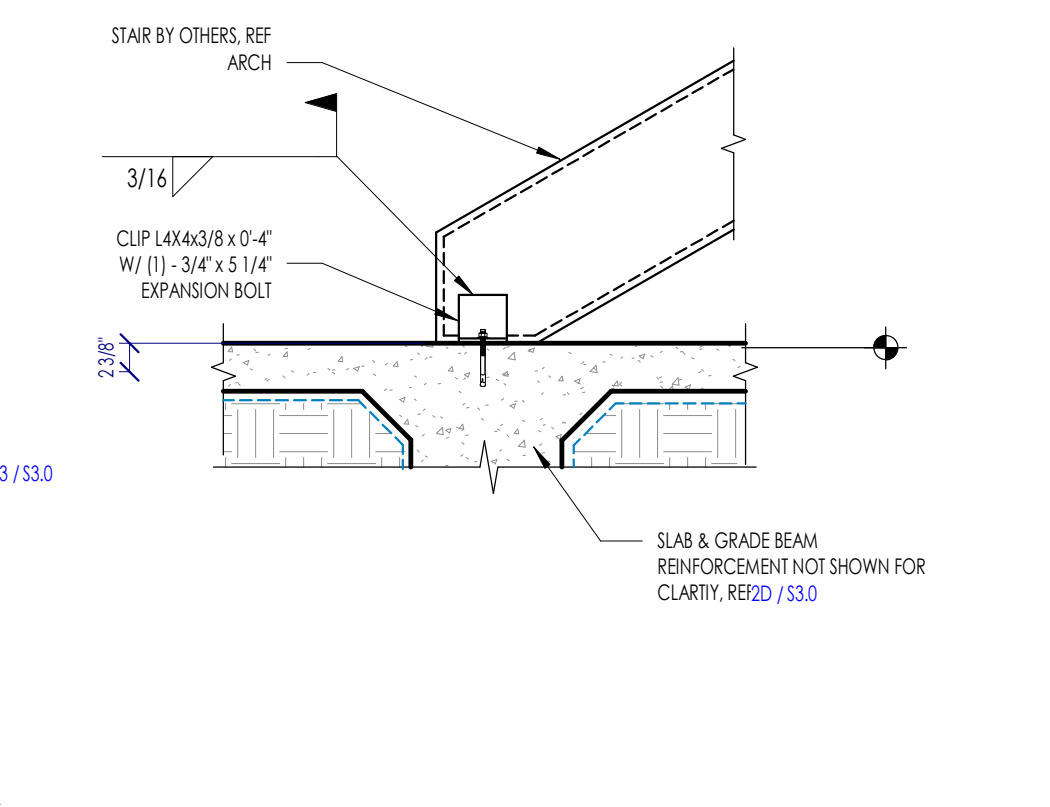
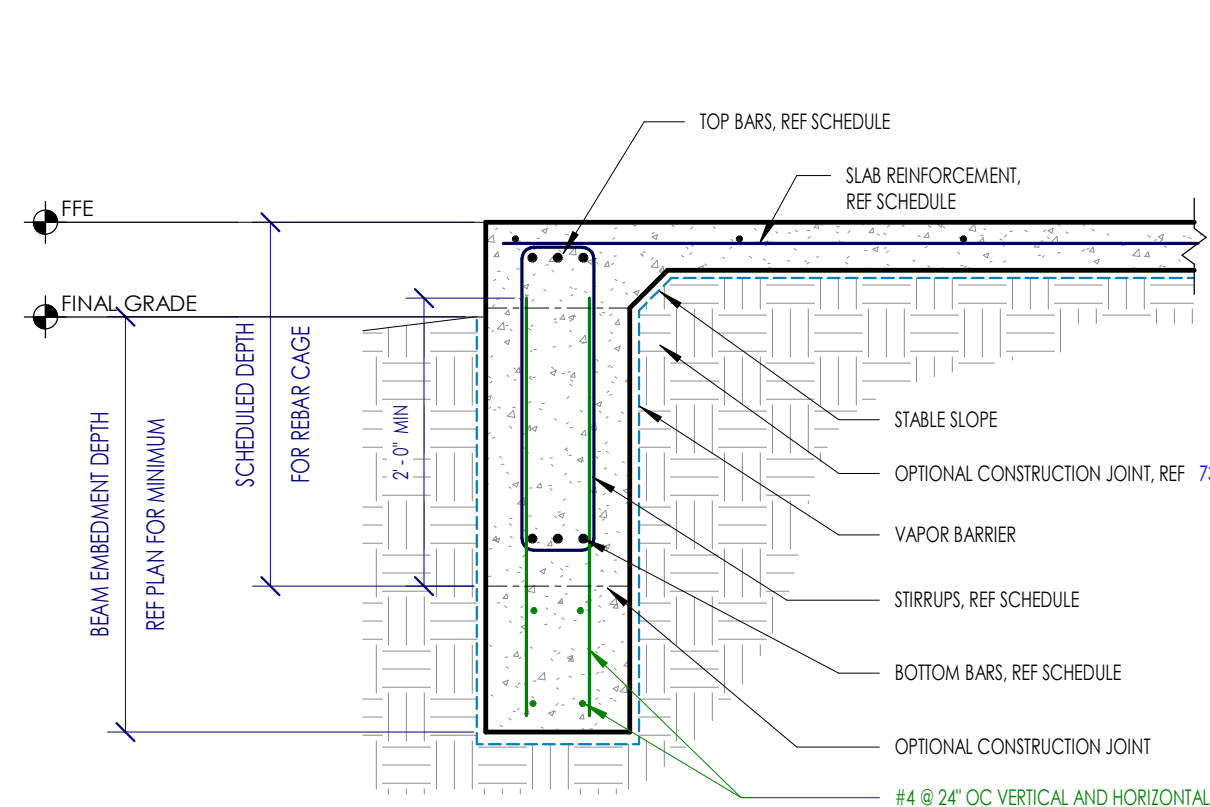
E

D

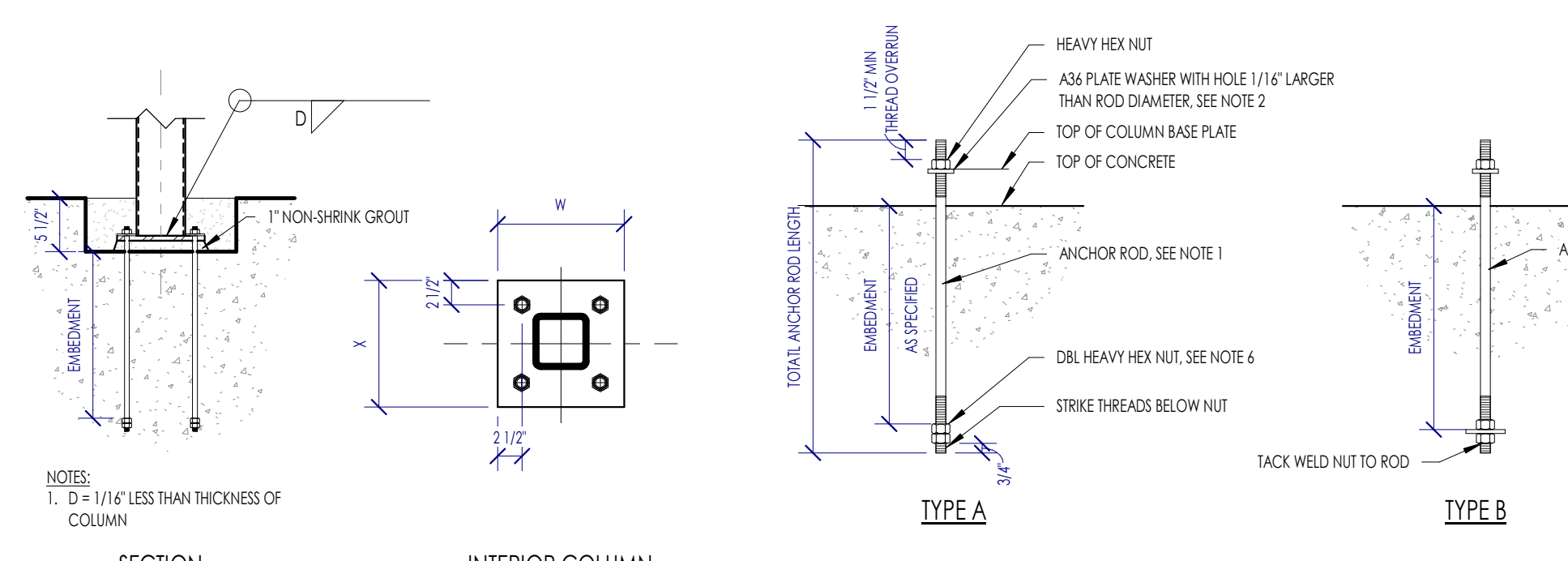
C

B

A



COLUMN	BASE PLATE DIMENSIONS			CONDITION	ANCHOR BOLTS		
	X	W	T		NO./TYPE	DIA.	EMBEDMENT
HSS/SLS	13"	13"	1"	INTERIOR	4/A	1"	1'-0"
HSS/SLS	16"	16"	1"	INTERIOR	4/A	1"	1'-0"



ANCHOR ROD DIAMETER	HOLE DIAMETER	SQUARE PLATE WASHER SIZE	PLATE WASHER THICKNESS	TYPE B ANCHOR ROD
5/8"	1.316"	1 1/2"	1/4"	PL17X10-4
3/4"	1.516"	2"	1/4"	PL17X10-4
7/8"	1.916"	2 1/2"	5/16"	PL17X10-4
1"	1.1316"	3"	3/8"	PL19X10-5
1 1/2"	2.516"	3 1/2"	1/2"	PL19X10-5

- NOTES:
- ALL TYPE A ANCHOR RODS SHALL BE F1554 GRADE 36.
  - ALL TYPE B ANCHOR RODS SHALL BE F1554 GRADE 55.1.
  - PLATE WASHERS MUST BE WELDED TO THE BASE PLATE WITH MINIMUM 3/16" FLLET WELD ALL-AROUND.
  - EMBEDMENT DEPTH ARE PRELIMINARY. FINAL EMBEDMENT TO BE PROVIDED AFTER REVIEW OF METAL BUILDING REACTIONS.
  - ALL ANCHOR ROD HOLES SHALL ADHERE TO AISC DESIGN GUIDE 01 - TABLE 2.3.
  - THE DOUBLE NUT MAY BE OMITTED IF THE NUT IS TACK WELDED TO THE ROD.

This project, like most OpeningDesign's projects, is open source. (Attribution-ShareAlike 4.0 International-CC BY-SA 4.0) - freely available to any party for future use, assuming the terms such as Attribution and ShareAlike are honored.

Date	Description
06/10/2022	Issued for Permit