

BXUVU305 - Fire-resistance Ratings - ANSI/UL 263

Design/System/Construction/Assembly Usage Disclaimer

- Authorities Having Jurisdiction should be consulted in all cases as to the particular requirements covering the installation and use of UL Classified products, equipment, systems, devices, and materials.

Fire-resistance Ratings - ANSI/UL 263

BXUV - Fire Resistance Ratings - ANSI/UL 263 Certified for United States BXUV7 - Fire Resistance Ratings - CAN/ULC-S101 Certified for Canada

See General Information for Fire Resistance Ratings - ANSI/UL 263 Certified for United States

See General Information for Fire Resistance Ratings - CAN/ULC-S101 Certified for Canada

Design No. U305

May 27, 2022

Bearing Wall Rating - 1 Hr

Finish Rating - See Items 3, 3A, 3B, 3C, 3D, 3E, 3F, 3G, 3H, 3J, 3L

STC Rating - 56 (See Item 9)

This design was evaluated using a load design method using the Limit State Design Design Method (e.g., Working Stress Design Method). For jurisdictions employing the Limit State Design Method, such as Canada, a load restriction factor shall be used - See Guide RBXUV or RBXUV7

* Indicates such products shall bear the UL or cUL Certification Mark for jurisdictions employing the UL or cUL Certification (such as Canada), respectively.

1. Long, 0.0915 in. shank diam and 15/64 in. diam heads. When used in widths of other than 48 in., gypsum boards are to be installed horizontally.

GEORGIA-PACIFIC GYPSUM L L C - Type DGM (finish rating 20 min). GreenGlue X (finish rating 20 min).

3F. Gypsum Board* - (As an alternate to Item 3, 3A, 3B, 3C, 3D, and 3E) - 5/8 in. glass-mat faced with square edges, applied either horizontally or vertically. Gypsum panels nailed 7 in. OC around the perimeter and in the field with 6d cement coated nails 1-7/8 in. long, 0.0915 in. shank diam and 15/64 in. diam heads. Nails shall be placed 1 inch and 3 inch from horizontal joints and 7 inch OC thereafter.

CGC INC - Type USGX (finish rating 22 min)

UNITED STATES GYPSUM CO - Type USGX (finish rating 22 min)

USG BORAL DRYWALL SFZ LLC - Type USGX (finish rating 22 min)

USG MEXICO S A DE CV - Type USGX (finish rating 22 min)

3G. Gypsum Board* - (As an alternate to Item 3 through 3H) - 5/8 in. thick paper surfaced applied vertically. Gypsum panels nailed 7 in. OC with 6d cement coated nails 1-7/8 in. long, 0.0915 in. shank diam and 15/64 in. diam heads.

GEORGIA-PACIFIC GYPSUM L L C - Type Q-QuaRex Sound DensGloss Gypsum Board (finish rating 27 min)

3H. Gypsum Board* - (As an alternate to Item 3) - Not to be used with Item 6 or 7. 5/8 in. thick paper surfaced applied vertically only. Gypsum panels nailed 7 in. OC with 6d cement coated nails 1-7/8 in. long, 0.0915 in. shank diam and 15/64 in. diam heads.

NATIONAL GYPSUM CO - Type S8W

3I. Gypsum Board* - (As an alternate to Item 3 through 3H. Not Shown) - Nominal 5/8 in. thick, 4 in. wide panels, applied vertically. Panels nailed 7 in. OC with 6d cement coated nails 1-7/8 in. long, 0.0915 in. shank diam and 15/64 in. diam heads. Panel joints covered with paper tape and two layers of joint compound. Nailheads covered with two layers of joint compound.

PAFCO BUILDING PRODUCTS L L C, DBA PAFCO GYPSUM - Type QuaeRox 15 (finish rating 20 min)

3J. Gypsum Board* - (As an alternate to Item 3) - 5/8 in. thick paper surfaced applied vertically or horizontally. Gypsum panels secured with 1-1/4 in. long Type W coarse thread gypsum panel steel screws spaced a maximum of 12 in. OC.

CERTAINTEED GYPSUM INC - Type S1entFX

3K. Gypsum Board* - (As an alternate to Item 3) - 5/8 in. thick gypsum panels, with beveled, square, or tapered edges, applied either horizontally or vertically. Gypsum panels fastened to framing with 1-1/4 in. long Type W coarse thread gypsum panel steel screws spaced a maximum 8 in. OC with the last screw 1 in. from the edge of the board. When used in widths other than 48 in., gypsum panels are to be installed horizontally.

NATIONAL GYPSUM CO - Type FSX (finish rating 20 min). Type FSX-G (finish rating 20 min). Type FSX-F (finish rating 20 min). Type FSX-C (finish rating 20 min). Type FSX-W (finish rating 20 min). Type FSX-V (finish rating 20 min). Type FSX-L (finish rating 20 min). Type FSX-R (finish rating 20 min).

3L. Gypsum Board* - (As an alternate to Item 3) - For Direct Application to Studs Only - Nom 5/8 in. thick lead backed gypsum panels with beveled, square or tapered edges, applied vertically. Vertical joints centered over studs and staggered min 1 stud cavity on opposite sides of studs. Wallboard secured to studs with 1-5/8 in. long Type W coarse thread gypsum panel steel screws spaced 8 in. OC at perimeter and in the field. Lead batter strips required behind vertical joints of lead backed gypsum wallboard and optional at remaining stud locations. Lead batter strips, min 2 in. wide, max 10 ft long with a max thickness of 0.14 in. placed on the face of studs and attached to the stud with two 1 in. long Type S-12 pan head steel screws, one at the top and one at the bottom of the strip and one at the top of the strip and one at the bottom of the strip and one at the top of the strip and one at the bottom of the strip. Lead discs, max 3/16 in. diam by max 0.140 in. thick, compression fitted or adhered over the screw heads. Lead batter strips to have a purity of 99.9% meeting the Federal specification QQ-L-2011, Grade 1B, or 27.

MAICO INDUSTRIES INC - "X-Ray Shielded Gypsum"

3M. Gypsum Board* - (As an alternate to Item 3) - For Direct Application to Studs Only - For use as the base layer or as the face layer. Nom 5/8 in. thick lead backed gypsum panels with beveled, square or tapered edges, applied vertically. Vertical joints centered over studs and staggered min 1 stud cavity on opposite sides of studs. Wallboard secured to studs with 1-5/8 in. long Type W coarse thread gypsum panel steel screws spaced 8 in. OC at perimeter and in the field when applied as the base layer. When applied as

the face layer, gypsum panels shall be installed horizontally.

UNITED STATES GYPSUM CO - Type USGX (finish rating 22 min)

USG BORAL DRYWALL SFZ LLC - Type USGX (finish rating 22 min)

USG MEXICO S A DE CV - Type USGX (finish rating 22 min)

3N. Gypsum Board* - (As an alternate to Item 3) - 5/8 in. thick, 4 ft. wide, applied horizontally or vertically with vertical joints centered over studs and staggered one stud cavity on opposite sides of studs. Secured as described in Item 3 or 3A.

CERTAINTEED GYPSUM INC - Easy-Lite Type X (finish rating 24 min), Easy-Lite Type X-2 (finish rating 24 min)

3O. Wall and Partition Facings and Accessories* - (As an alternate to Item 3, Not Shown) - Nominal 5/8 in. thick, 4 ft wide panels, applied either horizontally or vertically. Gypsum panels fastened to framing with 1-1/4 in. long, 0.0915 in. shank diam and 15/64 in. diam heads. Panel joints covered with paper tape and joint compound. Nailheads covered with two layers of joint compound.

PAFCO BUILDING PRODUCTS L L C, DBA PAFCO GYPSUM - Type QuaeRox 15 (finish rating 20 min)

3P. Gypsum Board* - (As an alternate to Item 3, Not Shown) - Two layers nom. 5/16 in. thick, 4 ft wide gypsum panels applied horizontally or vertically. Horizontal edge joints and horizontal butt joints on opposite sides of studs need not be staggered or backed by wood studs. Horizontal joints on the same side between face and base layers need not be staggered. Base layer gypsum panels fastened to studs with 1-1/4 in. long drywall nails spaced 8 in. OC. Face layer gypsum panels fastened to studs with 1-7/8 in. long drywall nails spaced 8 in. OC, starting with 4" stagger.

NATIONAL GYPSUM CO - Type FSX (finish rating 25 min)

3Q. Gypsum Board* - (As an alternate to Item 3) - 5/8 in. thick gypsum panels, with beveled, square, or tapered edges, applied either horizontally or vertically. Gypsum panels fastened to framing with 1-1/4 in. long Type W coarse thread gypsum panel steel screws spaced a maximum 10 in. OC with the last two screws 4 and 3/4 in. from the edges of the board. When used in widths other than 48 in., gypsum panels are to be installed horizontally.

CERTAINTEED GYPSUM INC - Type LGFCGA (finish rating 21 min), Type LGFCBA, Type LGFC-CA, Type LGFC-WD, Type LGGLX (finish rating 21 min)

3R. Gypsum Board* - (As an alternate to Item 3. For use with Item 5H) - Any 5/8 in. thick, 4 ft wide, Gypsum Board listed in Item 3 above. Applied either horizontally or vertically, and screwed to panels with 1-5/8 in. long Type W coarse thread steel screws at 8 in. OC at perimeter and in the field with the last two screws 4 and 3/4 in. from the edges of the board when applied as the base layer. When used in widths other than 48 in., gypsum panels are to be installed horizontally.

AMERICAN GYPSUM CO - Types AGK-1

3S. Gypsum Board* - 3/4 in. thick paper or vinyl surfaced, with beveled, square, or tapered edges, applied either horizontally or vertically. Gypsum panels secured as described in Item 3 with wall nails increased to 2 in.

PAFCO BUILDING PRODUCTS L L C, DBA PAFCO GYPSUM - Type PG-13

3T. Wall and Partition Facings and Accessories* - (As an alternate to 5/8 in. thick board as outlined in Item 3) - Nominal 1-3/8 in. thick, 4 ft wide panels, applied vertically or horizontally. Fastened with #8 x 2 in. long drywall screws spaced 8 in. OC along the perimeter and 12 in. OC in the field.

PAFCO BUILDING PRODUCTS L L C, DBA PAFCO GYPSUM - Type QuaeRox 15

3U. Gypsum Board* - (As an alternate to Item 3) - For use with Formed/Fabric Products. Item 5H) - 5/8 in. thick, 4 ft. wide, applied vertically with vertical joints centered over studs and staggered one stud cavity on opposite sides of studs. Gypsum panels nailed 7 in. OC with 6d cement coated nails 1-7/8 in. long, 0.0915 in. shank diam and 15/64 in. diam heads.

AMERICAN GYPSUM CO - Types AGK-1

BEING NEW BUILDING MATERIALS PUBLIC LTD CO - Type DRK-1 (finish rating 24 min)

CAOIT MANUFACTURING LLC - Type X

CERTAINTEED GYPSUM INC - Type X

CAOIT MANUFACTURING LLC - Type X

3V. Gypsum Board* - (As an alternate to Item 3) - For use with Item 5H) - Any 5/8 in. thick, 4 ft wide, Gypsum Board listed in Item 3 above. Applied vertically with vertical joints centered over studs and staggered one stud cavity on opposite sides of studs. Gypsum panels fastened to studs with 1-1/4 in. long drywall nails spaced 8 in. OC. Face layer gypsum panels fastened to studs with 1-7/8 in. long drywall nails spaced 8 in. OC, starting with 4" stagger.

NATIONAL GYPSUM CO - Type FSX (finish rating 25 min)

3W. Gypsum Board* - (As an alternate to Item 3) - 5/8 in. thick gypsum panels, with beveled, square, or tapered edges, applied either horizontally or vertically. Gypsum panels fastened to framing with 1-1/4 in. long Type W coarse thread gypsum panel steel screws spaced a maximum 10 in. OC with the last two screws 4 and 3/4 in. from the edges of the board. When used in widths other than 48 in., gypsum panels are to be installed horizontally.

CERTAINTEED GYPSUM INC - Type S1entFX

3X. Gypsum Board* - (As an alternate to Item 3) - 5/8 in. thick gypsum panels, with beveled, square, or tapered edges, applied either horizontally or vertically. Gypsum panels fastened to framing with 1-1/4 in. long Type W coarse thread gypsum panel steel screws spaced a maximum 10 in. OC with the last two screws 4 and 3/4 in. from the edges of the board. When used in widths other than 48 in., gypsum panels are to be installed horizontally.

NATIONAL GYPSUM CO - Type FSX (finish rating 20 min). Type FSX-G (finish rating 20 min). Type FSX-F (finish rating 20 min). Type FSX-C (finish rating 20 min). Type FSX-W (finish rating 20 min). Type FSX-V (finish rating 20 min). Type FSX-L (finish rating 20 min). Type FSX-R (finish rating 20 min).

3Y. Gypsum Board* - (As an alternate to Item 3) - For use with Item 5H) - Any 5/8 in. thick, 4 ft wide, Gypsum Board listed in Item 3 above. Applied vertically with vertical joints centered over studs and staggered one stud cavity on opposite sides of studs. Gypsum panels fastened to studs with 1-1/4 in. long drywall nails spaced 8 in. OC. Face layer gypsum panels fastened to studs with 1-7/8 in. long drywall nails spaced 8 in. OC, starting with 4" stagger.

NATIONAL GYPSUM CO - Type FSX (finish rating 25 min)

3Z. Gypsum Board* - (As an alternate to Item 3) - 5/8 in. thick gypsum panels, with beveled, square, or tapered edges, applied either horizontally or vertically. Gypsum panels fastened to framing with 1-1/4 in. long Type W coarse thread gypsum panel steel screws spaced a maximum 10 in. OC with the last two screws 4 and 3/4 in. from the edges of the board. When used in widths other than 48 in., gypsum panels are to be installed horizontally.

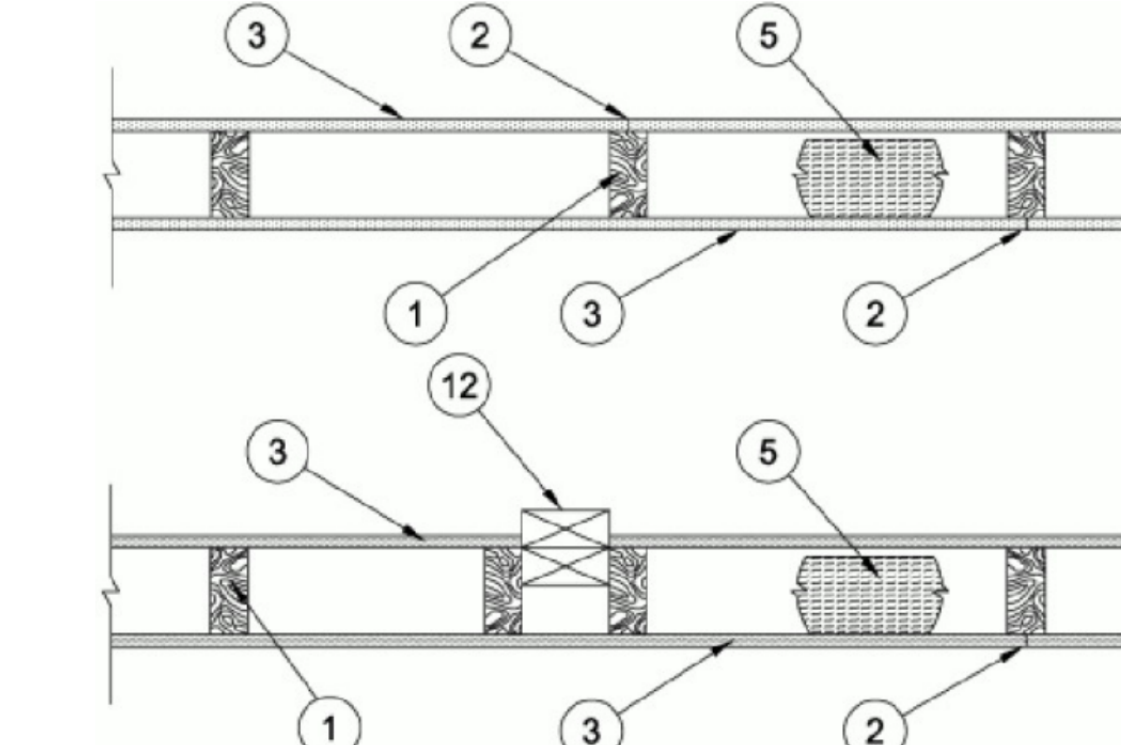
CERTAINTEED GYPSUM INC - Type S1entFX

3AA. Gypsum Board* - (As an alternate to Item 3) - 5/8 in. thick gypsum panels, with beveled, square, or tapered edges, applied either horizontally or vertically. Gypsum panels fastened to framing with 1-1/4 in. long Type W coarse thread gypsum panel steel screws spaced a maximum 10 in. OC with the last two screws 4 and 3/4 in. from the edges of the board. When used in widths other than 48 in., gypsum panels are to be installed horizontally.

NATIONAL GYPSUM CO - Type FSX (finish rating 20 min). Type FSX-G (finish rating 20 min). Type FSX-F (finish rating 20 min). Type FSX-C (finish rating 20 min). Type FSX-W (finish rating 20 min). Type FSX-V (finish rating 20 min). Type FSX-L (finish rating 20 min). Type FSX-R (finish rating 20 min).

3AB. Gypsum Board* - (As an alternate to Item 3) - 5/8 in. thick gypsum panels, with beveled, square, or tapered edges, applied either horizontally or vertically. Gypsum panels fastened to framing with 1-1/4 in. long Type W coarse thread gypsum panel steel screws spaced a maximum 10 in. OC with the last two screws 4 and 3/4 in. from the edges of the board. When used in widths other than 48 in., gypsum panels are to be installed horizontally.

CERTAINTEED GYPSUM INC - Type S1entFX



1. Wood Studs - Nom 2 by 4 in. spaced 16 in. OC max, effectively firestopped.

2. Joints and Nail-Heads - Joints covered with joint compound and paper tape. Joint compound and paper tape may be omitted when square edges are used. As an alternate, nom 3/32 in. thick gypsum veneer plaster may be applied to the entire surface of Classified veneer baseboard with the joints reinforced with paper tape. Nailheads exposed or covered with joint compound.

3. Gypsum Board* - 5/8 in. thick paper or vinyl surfaced, with beveled, square, or tapered edges, applied either horizontally or vertically. Gypsum panels nailed 7 in. OC with 6d cement coated nails 1-7/8 in. long, 0.0915 in. shank diam and 15/64 in. diam heads. When used in widths other than 48 in., gypsum panels are to be installed horizontally. For an alternate method of attachment, gypsum panels, refer to Items 6 through 6F. Steel Framing Members* - When Items 6, 6B, 6C, 6E, or 6F. Steel Framing Members* are used, gypsum panels attached to furring channels with 1 in. long Type 5 boggle-head steel screws spaced 12 in. OC. All joints on face layers staggered with joints in base layers. One layer of gypsum board attached to opposite side of wood stud with furring channels as described in Item 3.

When Item 6A, Steel Framing Members* are used, two layers of gypsum panels attached to furring channels. Base layer attached to furring channels with 1 in. long Type 5 boggle-head steel screws spaced 12 in. OC. Face layer attached to furring channels with 1-5/8 in. long Type 5 boggle-head steel screws spaced 12 in. OC. All joints on face layers staggered with joints in base layers. One layer of gypsum board attached to opposite side of wood stud with furring channels as described in Item 3.

When Item 7, resilient channels are used, 5/8 in. thick, 4 ft wide gypsum panels applied vertically. Screw attached furring channels with 1 in. long self-drilling, self-tapping Type S or S-12 steel screws spaced 8 in. OC. Vertical joints spaced midway between studs.

AMERICAN GYPSUM CO - Types AGK-1 (finish rating 23 min), AGK-2 (finish rating 23 min), AGK-11 (finish rating 26 min), AGK-12 (finish rating 26 min), Type LGHRC (finish rating 23 min), or Type AG-C

BEING NEW BUILDING MATERIALS PUBLIC LTD CO - Type DRK-1 (finish rating 24 min)

CAOIT MANUFACTURING LLC - Type X (finish rating 22 min), 5/8 Type X, Moisture Resistant Type X, Gypsum Sheathing Type X, Mold & Mildew Resistant Type X and Mold & Mildew Resistant AR Type X, Type Bugless Exterior Sheathing

3A. Gypsum Board* - (As an alternate to Item 3) - 5/8 in. thick, 4 ft. wide, applied horizontally or vertically with vertical joints centered over studs and staggered one stud cavity on opposite sides of studs. Secured as described in Item 3 or 3A.

CERTAINTEED GYPSUM INC - Easy-Lite Type X (finish rating 24 min), Easy-Lite Type X-2 (finish rating 24 min)

3B. Wall and Partition Facings and Accessories* - (As an alternate to Item 3, Not Shown) - Nominal 5/8 in. thick, 4 ft wide panels, applied either horizontally or vertically. Gypsum panels fastened to framing with 1-1/4 in. long, 0.0915 in. shank diam and 15/64 in. diam heads. Panel joints covered with paper tape and joint compound. Nailheads covered with two layers of joint compound.

PAFCO BUILDING PRODUCTS L L C, DBA PAFCO GYPSUM - Type QuaeRox 15 (finish rating 20 min)

3C. Gypsum Board* - (As an alternate to Item 3, Not Shown) - Two layers nom. 5/16 in. thick, 4 ft wide gypsum panels applied horizontally or vertically. Horizontal edge joints and horizontal butt joints on opposite sides of studs need not be staggered or backed by wood studs. Horizontal joints on the same side between face and base layers need not be staggered. Base layer gypsum panels fastened to studs with 1-1/4 in. long drywall nails spaced 8 in. OC. Face layer gypsum panels fastened to studs with 1-7/8 in. long drywall nails spaced 8 in. OC, starting with 4" stagger.

NATIONAL GYPSUM CO - Type FSX (finish rating 25 min)

3D. Gypsum Board* - (As an alternate to Item 3) - 5/8 in. thick gypsum panels, with beveled, square, or tapered edges, applied either horizontally or vertically. Gypsum panels fastened to framing with 1-1/4 in. long Type W coarse thread gypsum panel steel screws spaced a maximum 10 in. OC with the last two screws 4 and 3/4 in. from the edges of the board. When used in widths other than 48 in., gypsum panels are to be installed horizontally.

CERTAINTEED GYPSUM INC - Type S1entFX

3E. Gypsum Board* - (As an alternate to Item 3) - 5/8 in. thick gypsum panels, with beveled, square, or tapered edges, applied either horizontally or vertically. Gypsum panels fastened to framing with 1-1/4 in. long Type W coarse thread gypsum panel steel screws spaced a maximum 10 in. OC with the last two screws 4 and 3/4 in. from the edges of the board. When used in widths other than 48 in., gypsum panels are to be installed horizontally.

NATIONAL GYPSUM CO - Type FSX (finish rating 20 min). Type FSX-G (finish rating 20 min). Type FSX-F (finish rating 20 min). Type FSX-C (finish rating 20 min). Type FSX-W (finish rating 20 min). Type FSX-V (finish rating 20 min). Type FSX-L (finish rating 20 min). Type FSX-R (finish rating 20 min).

3F. Gypsum Board* - (As an alternate to Item 3) - 5/8 in. thick gypsum panels, with beveled, square, or tapered edges, applied either horizontally or vertically. Gypsum panels fastened to framing with 1-1/4 in. long Type W coarse thread gypsum panel steel screws spaced a maximum 10 in. OC with the last two screws 4 and 3/4 in. from the edges of the board. When used in widths other than 48 in., gypsum panels are to be installed horizontally.

NATIONAL GYPSUM CO - Type FSX (finish rating 20 min). Type FSX-G (finish rating 20 min). Type FSX-F (finish rating 20 min). Type FSX-C (finish rating 20 min). Type FSX-W (finish rating 20 min). Type FSX-V (finish rating 20 min). Type FSX-L (finish rating 20 min). Type FSX-R (finish rating 20 min).

3G. Gypsum Board* - (As an alternate to Item 3) - 5/8 in. thick gypsum panels, with beveled, square, or tapered edges, applied either horizontally or vertically. Gypsum panels fastened to framing with 1-1/4 in. long Type W coarse thread gypsum panel steel screws spaced a maximum 10 in. OC with the last two screws 4 and 3/4 in. from the edges of the board. When used in widths other than 48 in., gypsum panels are to be installed horizontally.

NATIONAL GYPSUM CO - Type FSX (finish rating 20 min). Type FSX-G (finish rating 20 min). Type FSX-F (finish rating 20 min). Type FSX-C (finish rating 20 min). Type FSX-W (finish rating 20 min). Type FSX-V (finish rating 20 min). Type FSX-L (finish rating 20 min). Type FSX-R (finish rating 20 min).

3H. Gypsum Board* - (As an alternate to Item 3) - 5/8 in. thick gypsum panels, with beveled, square, or tapered edges, applied either horizontally or vertically. Gypsum panels fastened to framing with 1-1/4 in. long Type W coarse thread gypsum panel steel screws spaced a maximum 10 in. OC with the last two screws 4 and 3/4 in. from the edges of the board. When used in widths other than 48 in., gypsum panels are to be installed horizontally.

NATIONAL GYPSUM CO - Type FSX (finish rating 20 min). Type FSX-G (finish rating 20 min). Type FSX-F (finish rating 20 min). Type FSX-C (finish rating 20 min). Type FSX-W (finish rating 20 min). Type FSX-V (finish rating 20 min). Type FSX-L (finish rating 20 min). Type FSX-R (finish rating 20 min).

3I. Gypsum Board* - (As an alternate to Item 3) - 5/8 in. thick gypsum panels, with beveled, square, or tapered edges, applied either horizontally or vertically. Gypsum panels fastened to framing with 1-1/4 in. long Type W coarse thread gypsum panel steel screws spaced a maximum 10 in. OC with the last two screws 4 and 3/4 in. from the edges of the board. When used in widths other than 48 in., gypsum panels are to be installed horizontally.

NATIONAL GYPSUM CO - Type FSX (finish rating 20 min). Type FSX-G (finish rating 20 min). Type FSX-F (finish rating 20 min). Type FSX-C (finish rating 20 min). Type FSX-W (finish rating 20 min). Type FSX-V (finish rating 20 min). Type FSX-L (finish rating 20 min). Type FSX-R (finish rating 20 min).

3J. Gypsum Board* - (As an alternate to Item 3) - 5/8 in. thick gypsum panels, with beveled, square, or tapered edges, applied either horizontally or vertically. Gypsum panels fastened to framing with 1-1/4 in. long Type W coarse thread gypsum panel steel screws spaced a maximum 10 in. OC with the last two screws 4 and 3/4 in. from the edges of the board. When used in widths other than 48 in., gypsum panels are to be installed horizontally.

NATIONAL GYPSUM CO - Type FSX (finish rating 20 min). Type FSX-G (finish rating 20 min). Type FSX-F (finish rating 20 min). Type FSX-C (finish rating 20 min). Type FSX-W (finish rating 20 min). Type FSX-V (finish rating 20 min). Type FSX-L (finish rating 20 min). Type FSX-R (finish rating 20 min).

3K. Gypsum Board* - (As an alternate to Item 3) - 5/8 in. thick gypsum panels, with beveled, square, or tapered edges, applied either horizontally or vertically. Gypsum panels fastened to framing with 1-1/4 in. long Type W coarse thread gypsum panel steel screws spaced a maximum 10 in. OC with the last two screws 4 and 3/4 in. from the edges of the board. When used in widths other than 48 in., gypsum panels are to be installed horizontally.

NATIONAL GYPSUM CO - Type FSX (finish rating 20 min). Type FSX-G (finish rating 20 min). Type FSX-F (finish rating 20 min). Type FSX-C (finish rating 20 min). Type FSX-W (finish rating 20 min). Type FSX-V (finish rating 20 min). Type FSX-L (finish rating 20 min). Type FSX-R (finish rating 20 min).

3L. Gypsum Board* - (As an alternate to Item 3) - 5/8 in. thick gypsum panels, with beveled, square, or tapered edges, applied either horizontally or vertically. Gypsum panels fastened to framing with 1-1/4 in. long Type W coarse thread gypsum panel steel screws spaced a maximum 10 in. OC with the last two screws 4 and 3/4 in. from the edges of the board. When used in widths other than 48 in., gypsum panels are to be installed horizontally.

NATIONAL GYPSUM CO - Type FSX (finish rating 20 min). Type FSX-G (finish rating 20 min). Type FSX-F (finish rating 20 min). Type FSX-C (finish rating 20 min). Type FSX-W (finish rating 20 min). Type FSX-V (finish rating 20 min). Type FSX-L (finish rating 20 min). Type FSX-R (finish rating 20 min).

3M. Gypsum Board* - (As an alternate to Item 3) - 5/8 in. thick gypsum panels, with beveled, square, or tapered edges, applied either horizontally or vertically. Gypsum panels fastened to framing with 1-1/4 in. long Type W coarse thread gypsum panel steel screws spaced a maximum 10 in. OC with the last two screws 4 and 3/4 in. from the edges of the board. When used in widths other than 48 in., gypsum panels are to be installed horizontally.

NATIONAL GYPSUM CO - Type FSX (finish rating 20 min). Type FSX-G (finish rating 20 min). Type FSX-F (finish rating 20 min). Type FSX-C (finish rating 20 min). Type FSX-W (finish rating 20 min). Type FSX-V (finish rating 20 min). Type FSX-L (finish rating 20 min). Type FSX-R (finish rating 20 min).

3N. Gypsum Board* - (As an alternate to Item 3) - 5/8 in. thick gypsum panels, with beveled, square, or tapered edges, applied either horizontally or vertically. Gypsum panels fastened to framing with 1-1/4 in. long Type W coarse thread gypsum panel steel screws spaced a maximum 10 in. OC with the last two screws 4 and 3/4 in. from the edges of the board. When used in widths other than 48 in., gypsum panels are to be installed horizontally.

NATIONAL GYPSUM CO - Type FSX (finish rating 20 min). Type FSX-G (finish rating 20 min). Type FSX-F (finish rating 20 min). Type FSX-C (finish rating 20 min). Type FSX-W (finish rating 20 min). Type FSX-V (finish rating 20 min). Type FSX-L (finish rating 20 min). Type FSX-R (finish rating 20 min).

3O. Wall and Partition Facings and Accessories* - (As an alternate to 5/8 in. thick board as outlined in Item 3) - Nominal 1-3/8 in. thick, 4 ft wide panels, applied vertically or horizontally. Fastened with #8 x 2 in. long drywall screws spaced 8 in. OC along the perimeter and 12 in. OC in the field.

PAFCO BUILDING PRODUCTS L L C, DBA PAFCO GYPSUM - Type QuaeRox 15

3P. Gypsum Board* - (As an alternate to Item 3) - For use with Formed/Fabric Products. Item 5H) - 5/8 in. thick, 4 ft. wide, applied vertically with vertical joints centered over studs and staggered one stud cavity on opposite sides of studs. Gypsum panels nailed 7 in. OC with 6d cement coated nails 1-7/8 in. long, 0.0915 in. shank diam and 15/64 in. diam heads.

AMERICAN GYPSUM CO - Types AGK-1

3Q. Gypsum Board* - (As an alternate to Item 3) - 5/8 in. thick gypsum panels, with beveled, square, or tapered edges, applied either horizontally or vertically. Gypsum panels fastened to framing with 1-1/4 in. long Type W coarse thread gypsum panel steel screws spaced a maximum 10 in. OC with the last two screws 4 and 3/4 in. from the edges of the board. When used in widths other than 48 in., gypsum panels are to be installed horizontally.

CERTAINTEED GYPSUM INC - Type S1entFX

3R. Gypsum Board* - (As an alternate to Item 3) - 5/8 in. thick gypsum panels, with beveled, square, or tapered edges, applied either horizontally or vertically. Gypsum panels fastened to framing with 1-1/4 in. long Type W coarse thread gypsum panel steel screws spaced a maximum 10 in. OC with the last two screws 4 and 3/4 in. from the edges of the board. When used in widths other than 48 in., gypsum panels are to be installed horizontally.

NATIONAL GYPSUM CO - Type FSX (finish rating 20 min). Type FSX-G (finish rating 20 min). Type FSX-F (finish rating 20 min). Type FSX-C (finish rating 20 min). Type FSX-W (finish rating 20 min). Type FSX-V (finish rating 20 min). Type FSX-L (finish rating 20 min). Type FSX-R (finish rating 20 min).

3S. Gypsum Board* - (As an alternate to Item 3) - 5/8 in. thick gypsum panels, with beveled, square, or tapered edges, applied either horizontally or vertically. Gypsum panels fastened to framing with 1-1/4 in. long Type W coarse thread gypsum panel steel screws spaced a maximum 1