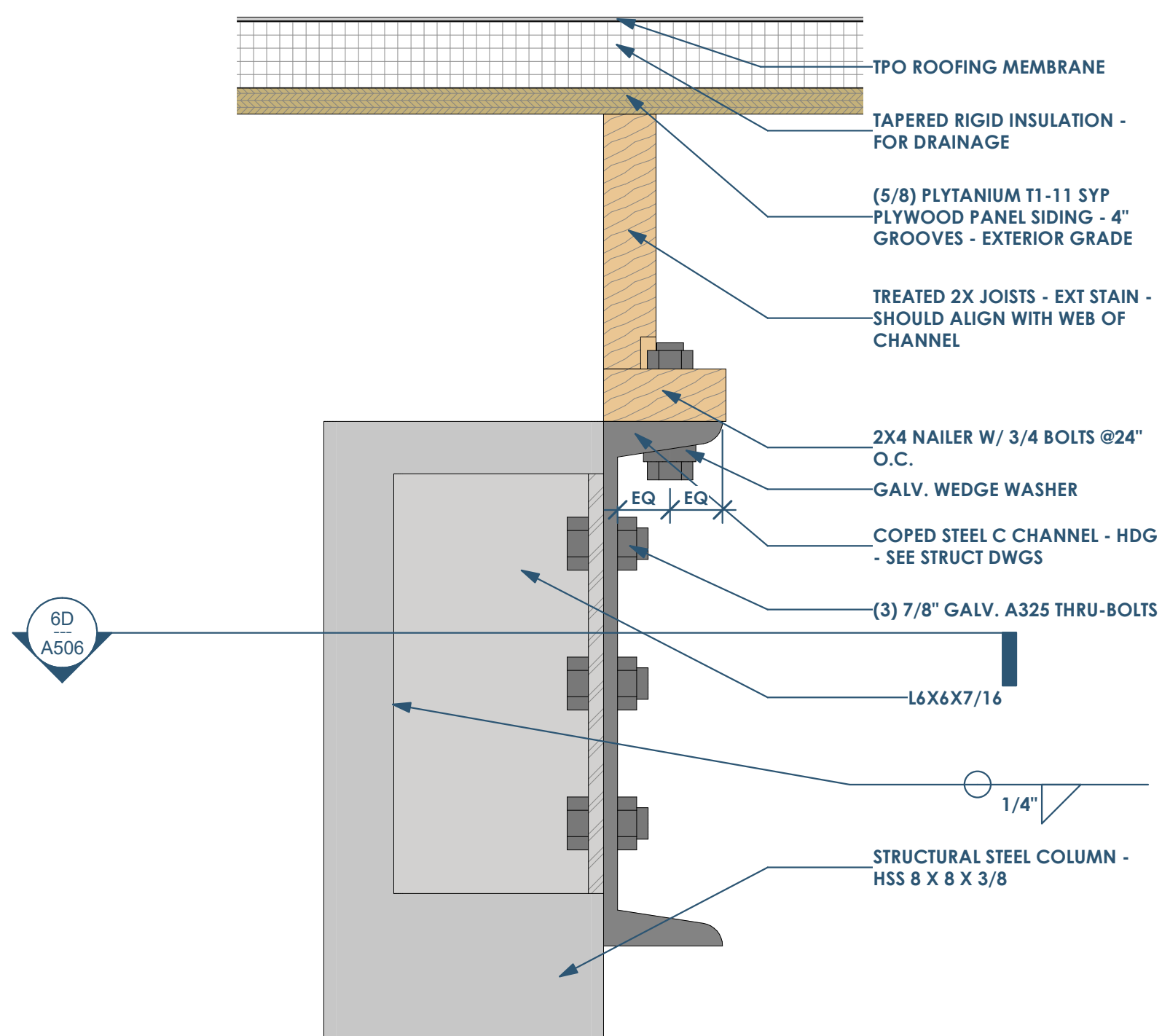
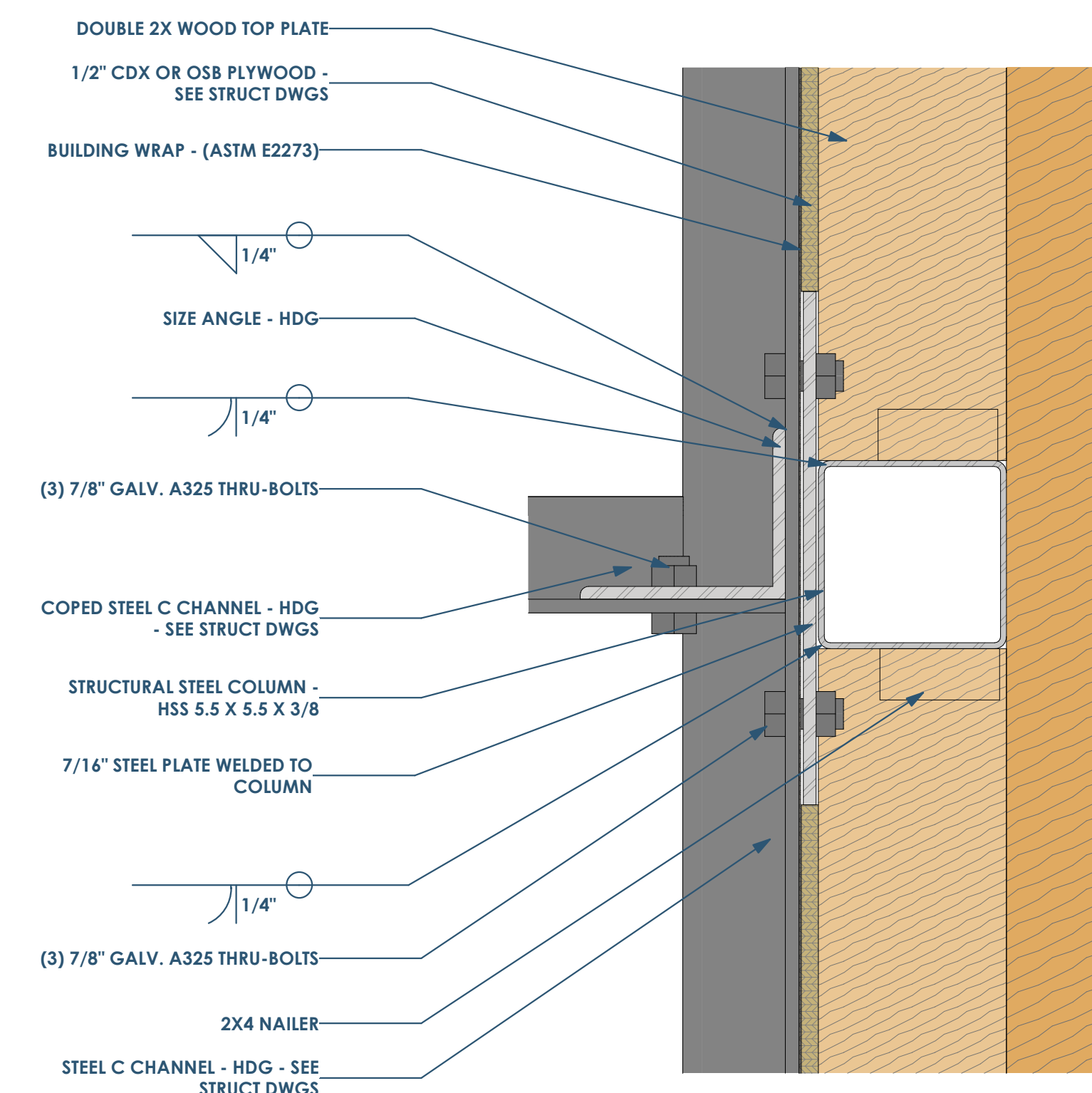


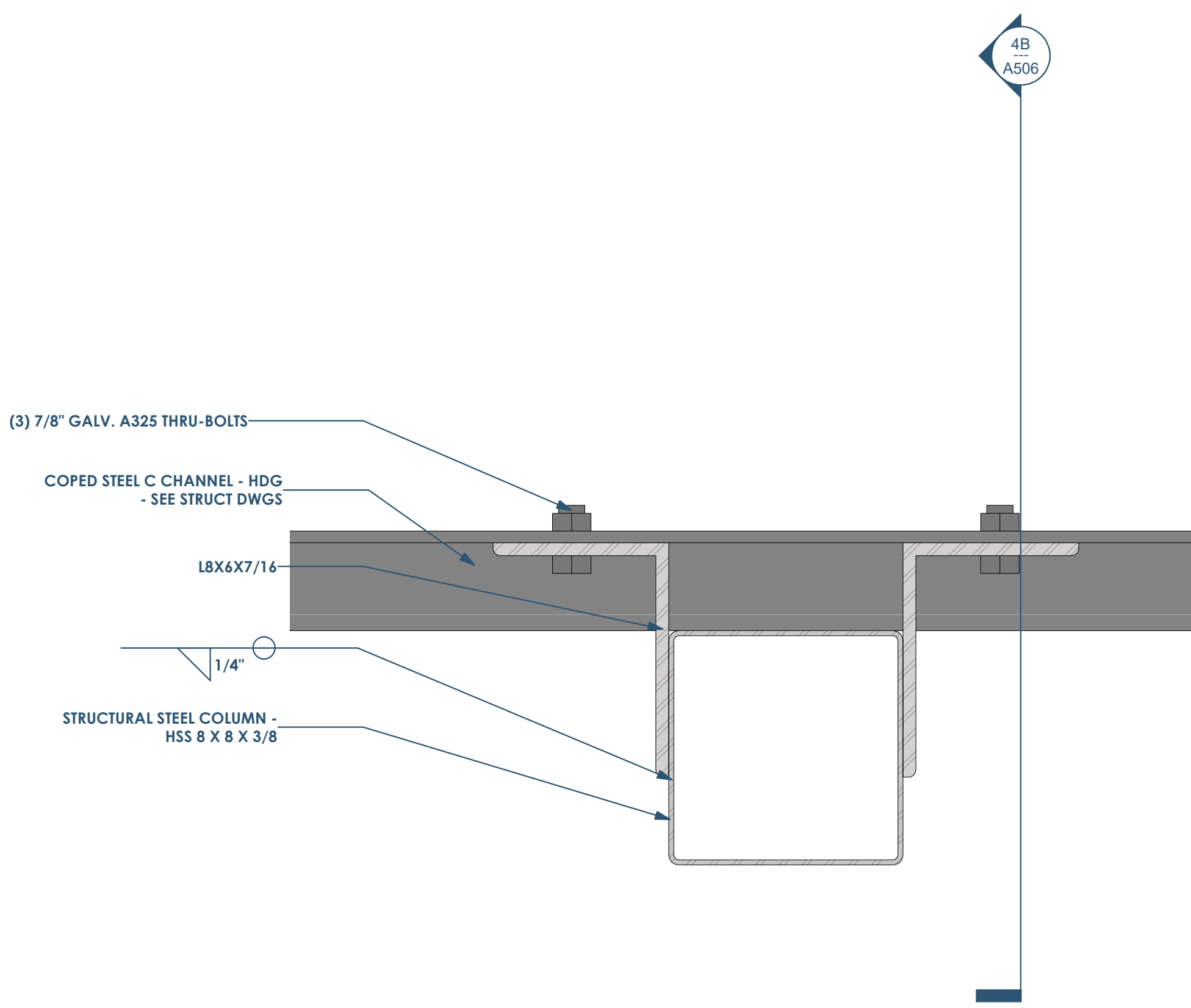
4D A506 PLAN DETAIL C CHANNEL TO COLUMN - AT ROOF
3" = 1'-0"



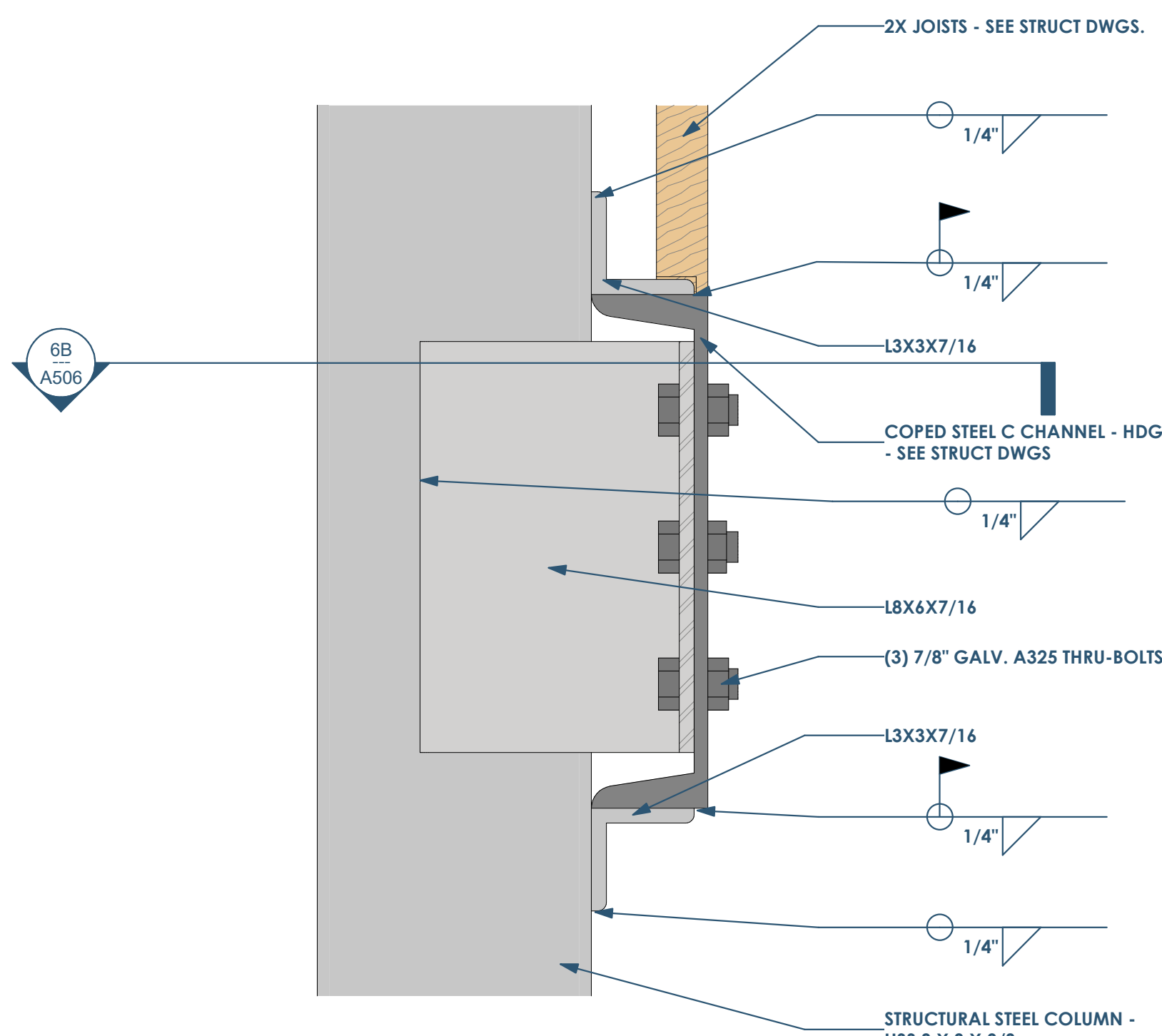
4D A506 SECTION DETAIL C CHANNEL TO COLUMN - AT ROOF
3" = 1'-0"



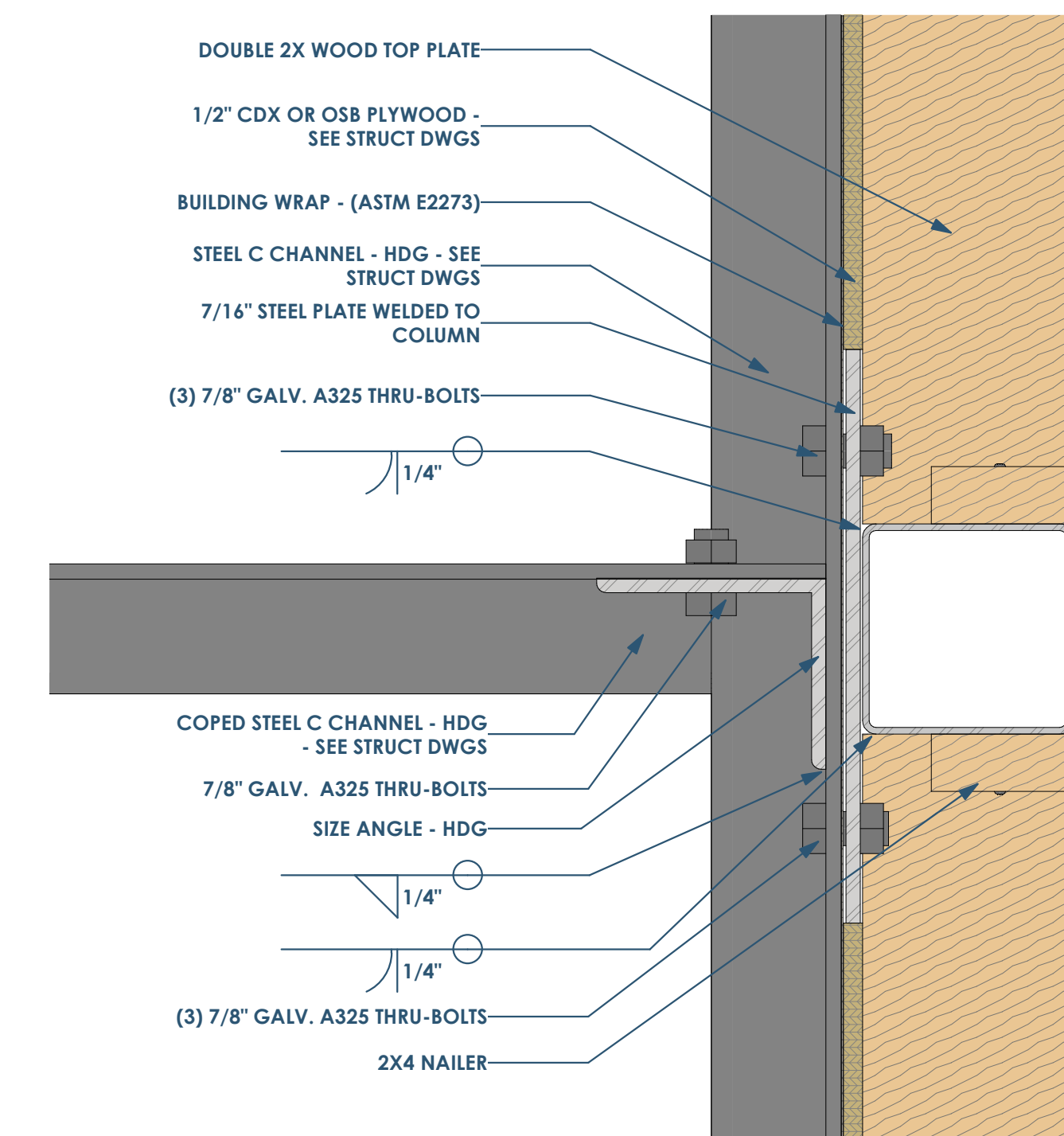
2D A506 PLAN DETAIL C CHANNEL TO COLUMN AT WALL - ROOF
3" = 1'-0"



4B A506 PLAN DETAIL C CHANNEL TO COLUMN - 3RD AND 2ND FLOORS
3" = 1'-0"



4B A506 SECTION DETAIL C CHANNEL TO COLUMN - AT ROOF 2ND AND 3RD FLOORS
3" = 1'-0"



2B A506 PLAN DETAIL C CHANNEL TO COLUMN AT WALL - 3RD AND 2ND FLOORS
3" = 1'-0"

RENOVATION Wranglers
Owner: Renovation Wranglers
102 E 26th St
Bryan, TX 77803
Kateneason@me.com | 979.450.9969

ARCHITECTURE
Architect of Record: LKB Architecture
2929 Allen Pkwy Suite 200
Houston, TX 77019
isa@lkbarchitecture.com | 713.425.3076

DUDDLEY
Structural: Dudley
6102 Imperial Loop Drive
College Station, TX 77845
(979) 777-0720

MEP: AMC Engineers
508 E Jackson St # 552
Burnet, TX 78611
info@amcengineers.com

This project, like most OpeningDesign's projects, is open source (Attribution-ShareAlike 4.0 International-CC BY-SA 4.0)-freely available to any party for future use, assuming the terms such as Attribution and ShareAlike are honored.

openingdesign
Architect: OpeningDesign
17 S Fairchild | FL 7
Madison, WI 53703
ryan@openingdesign.com | 773.425.6456

Date	Description
06/10/2022	Issued for Permit