

6

5

4

3

2

1

E

D

C

B

A

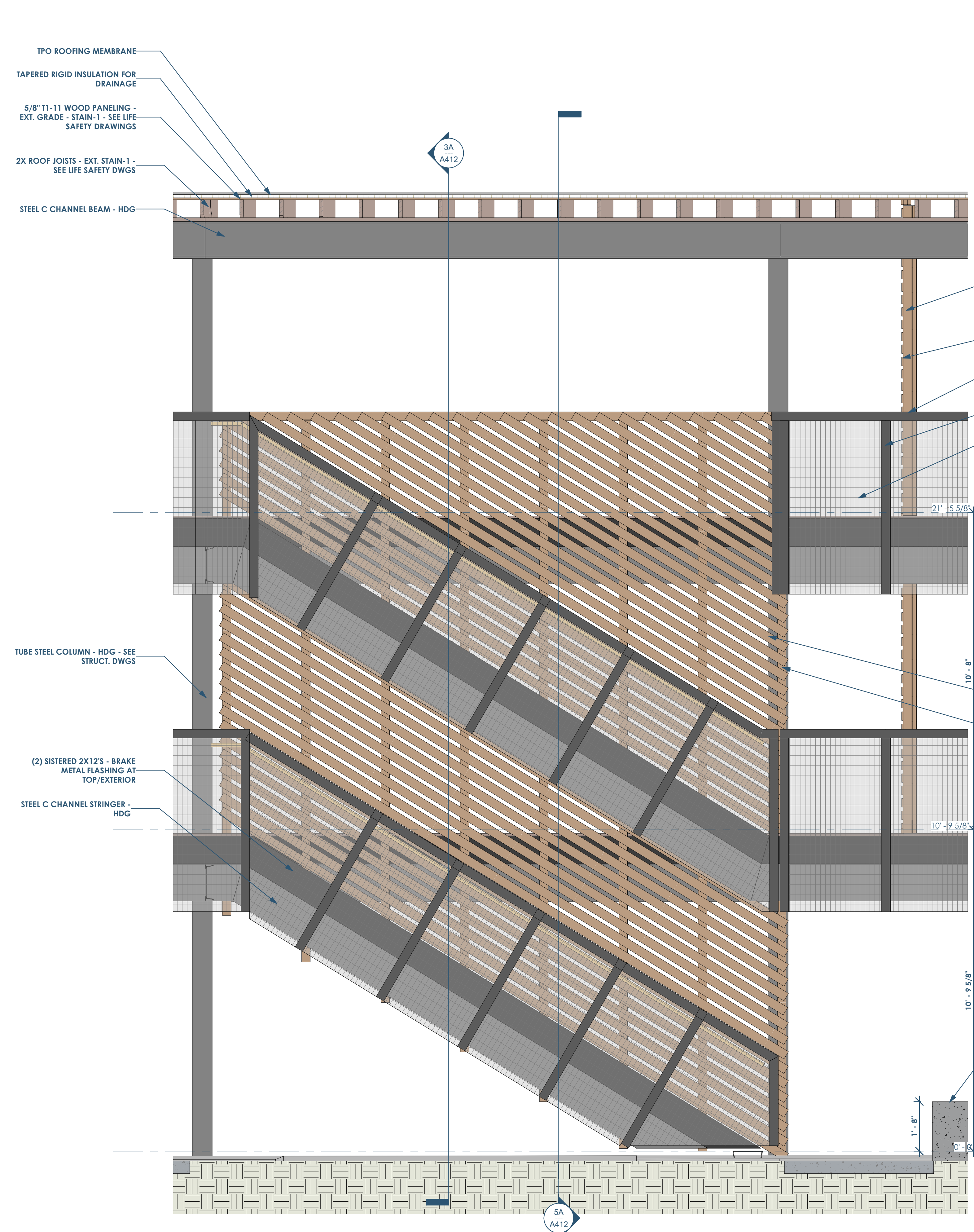
E

D

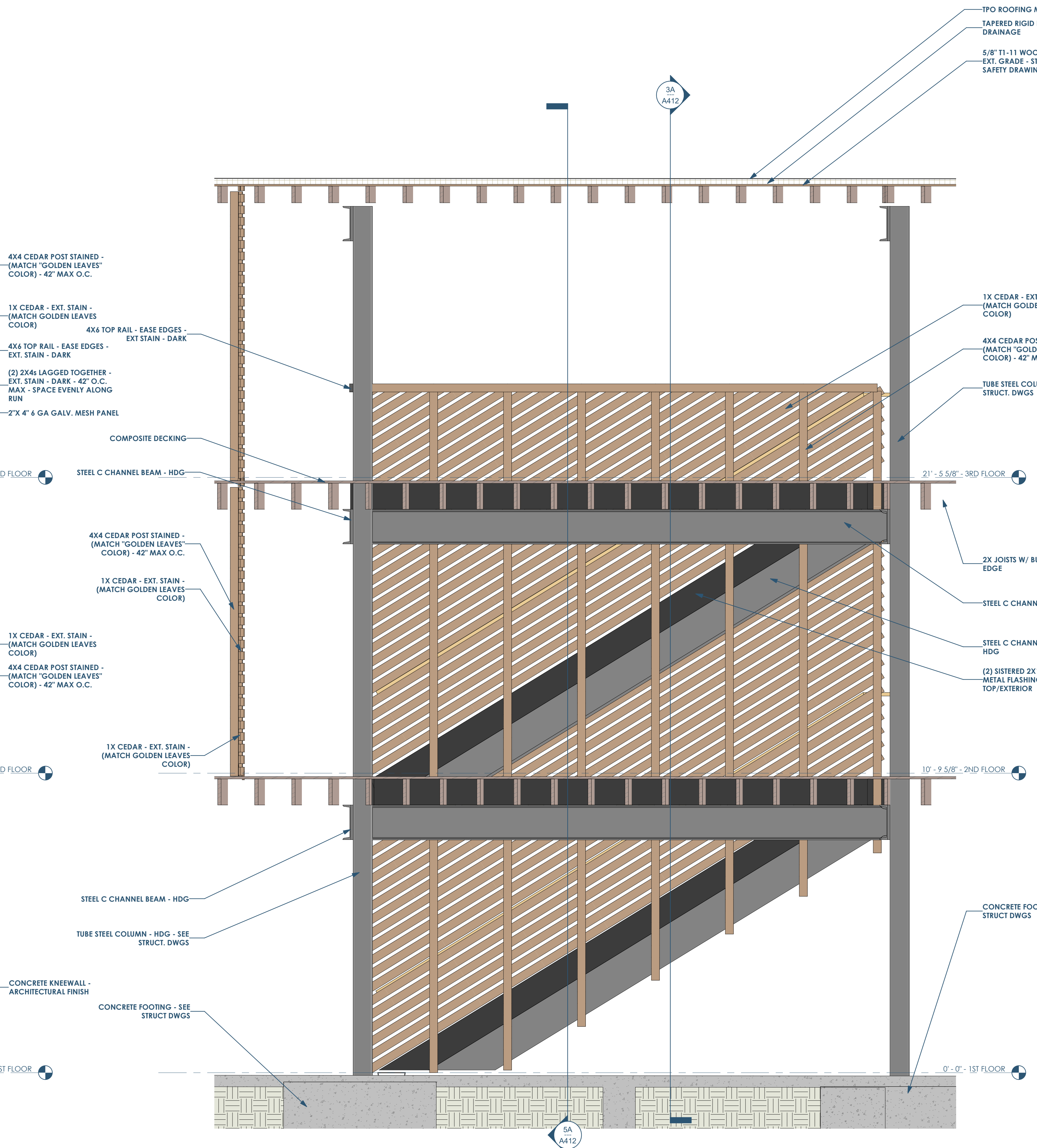
C

B

A



6A A411 STAIR VIEW - FRONT OF STAIR
1/2" = 1'-0"



3A A412 STAIR SECTION - CUT THROUGH BALCONY
1/2" = 1'-0"

TPO ROOFING MEMBRANE
TAPERED RIGID INSULATION FOR DRAINAGE
5/8" T1-11 WOOD PANELING - EXT. GRADE - STAIN-1 - SEE LIFE SAFETY DRAWINGS
2X ROOF JOISTS - EXT. STAIN-1 - SEE LIFE SAFETY DWGS
STEEL C CHANNEL BEAM - HDG

TPO ROOFING MEMBRANE
TAPERED RIGID INSULATION FOR DRAINAGE
5/8" T1-11 WOOD PANELING - EXT. GRADE - STAIN-1 - SEE LIFE SAFETY DRAWINGS

4X4 CEDAR POST STAINED - (MATCH "GOLDEN LEAVES" COLOR) - 42" MAX O.C.
1X CEDAR - EXT. STAIN - (MATCH GOLDEN LEAVES COLOR)
4X4 TOP RAIL - EASE EDGES - EXT. STAIN - DARK
(2) 2X4s LAGGED TOGETHER - EXT. STAIN - DARK - 42" O.C. MAX - SPACE EVENLY ALONG RUN
2" X 4" 6 GA GALV. MESH PANEL
COMPOSITE DECKING

1X CEDAR - EXT. STAIN - (MATCH GOLDEN LEAVES COLOR)
4X4 CEDAR POST STAINED - (MATCH "GOLDEN LEAVES" COLOR) - 42" MAX O.C.
TUBE STEEL COLUMN - HDG - SEE STRUCT. DWGS

4X4 CEDAR POST STAINED - (MATCH "GOLDEN LEAVES" COLOR) - 42" MAX O.C.
1X CEDAR - EXT. STAIN - (MATCH GOLDEN LEAVES COLOR)
10" - 8"
1X CEDAR - EXT. STAIN - (MATCH GOLDEN LEAVES COLOR)
4X4 CEDAR POST STAINED - (MATCH "GOLDEN LEAVES" COLOR) - 42" MAX O.C.

1X CEDAR - EXT. STAIN - (MATCH GOLDEN LEAVES COLOR)
2X JOISTS W/ BUTYL TAPE AT TOP EDGE
STEEL C CHANNEL BEAM - HDG
STEEL C CHANNEL STRINGER - HDG
(2) SISTERED 2X12'S - BRAKE METAL FLASHING AT TOP/EXTERIOR

STEEL C CHANNEL BEAM - HDG
TUBE STEEL COLUMN - HDG - SEE STRUCT. DWGS
CONCRETE KNEEWALL - ARCHITECTURAL FINISH
CONCRETE FOOTING - SEE STRUCT. DWGS

CONCRETE FOOTING - SEE STRUCT. DWGS

This project, like most OpeningDesign's projects, is open source (Attribution-ShareAlike 4.0 International-CC BY-SA 4.0)-freely available to any party for future use, assuming the terms such as Attribution and ShareAlike are honored.

RENOVATION
Wranglers
Owner: Renovation Wranglers
102 E 26th St
Bryan, TX 77803
kate@renovations.com | 979.450.9969

LKB
ARCHITECTURE
Architect of Record: LKB Architecture
2929 Allen Pkwy Suite 200
Houston, TX 77019
isa@lkbarchitecture.com | 713.425.3076

DUDLEY
Structural: Dudley
4102 Imperial Loop Drive
College Station, TX 77845
(979) 777-0720

amc
ENGINEERS
MEP: AMC Engineers
508 E Jackson St # 552
Burnet, TX 78611
info@amcengineers.com

openingdesign
Architect: OpeningDesign
17 S Fairchild | FL 7
Madison, WI 53703
ryan@openingdesign.com | 773.425.6456

Date	Description
06/10/2022	Issued for Permit