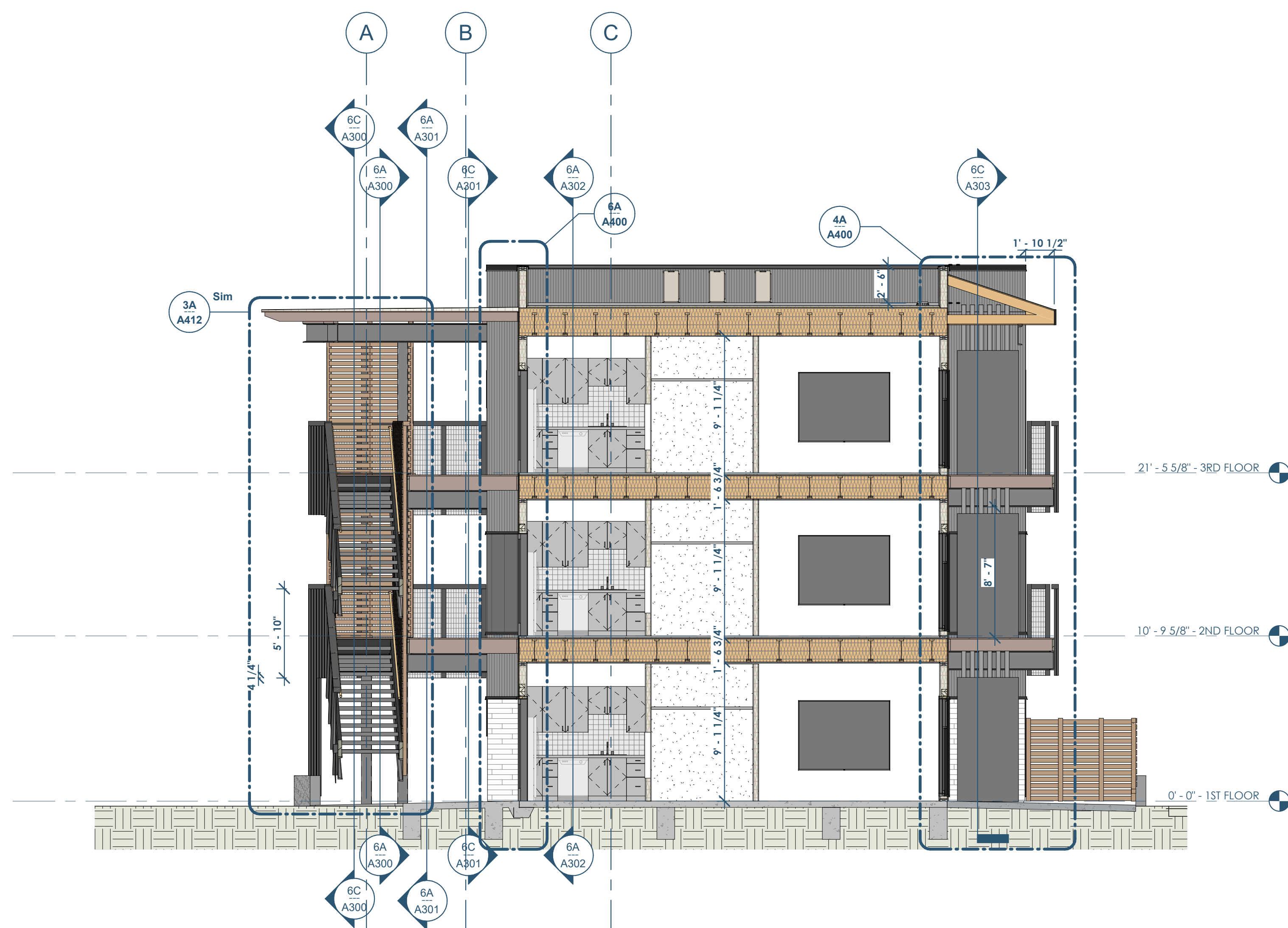
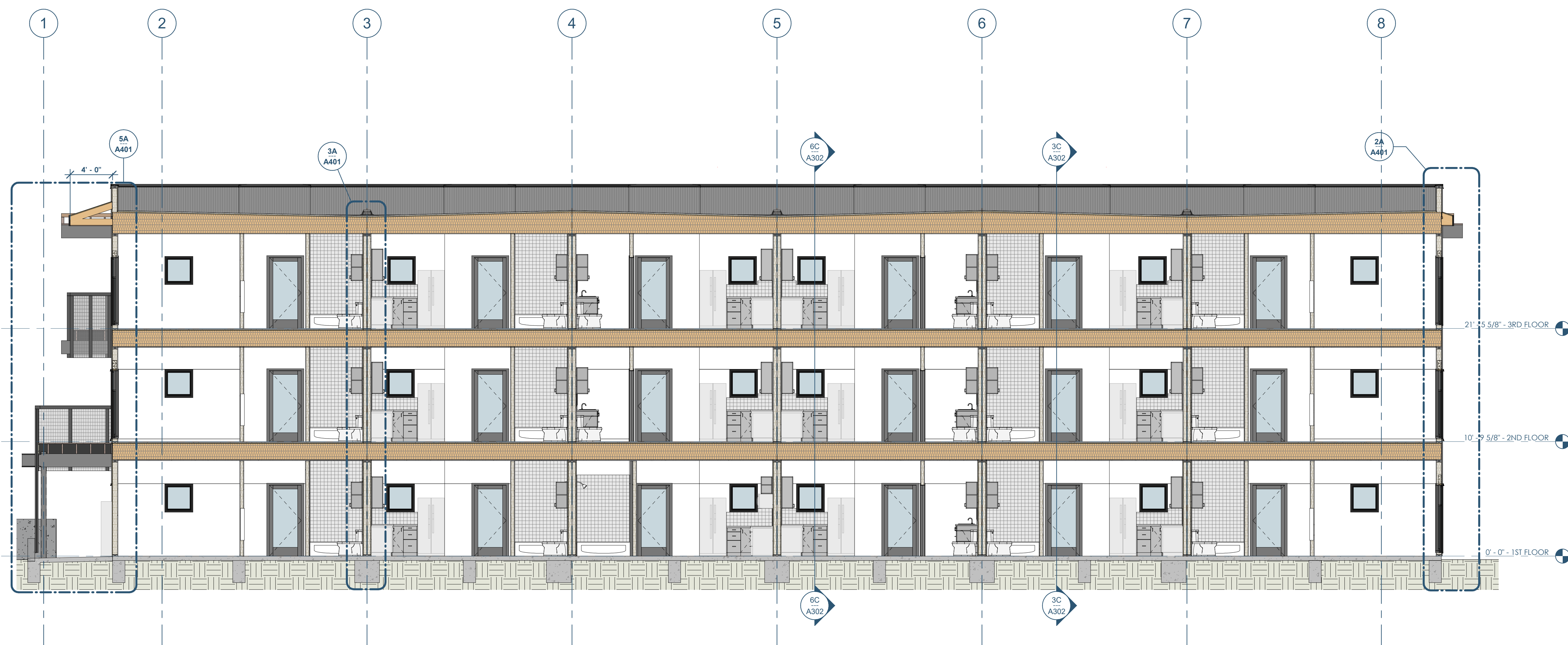


6C A302 BUILDING SECTION - THRU LARGE STUDIO - LOOKING EAST  
3/16" = 1'-0"



3C A302 BUILDING SECTION - THRU SMALL STUDIO - LOOKING EAST  
3/16" = 1'-0"



6A A302 BUILDING SECTION - EAST/WEST - LOOKING NORTH  
3/16" = 1'-0"

**RENOVATION**  
Wranglers  
ENGINEERS

Owner: Renovation Wranglers  
102 E 26th St  
Bryan, TX 77803  
Kateneason@rw.com | 979.450.9969

**LKB**  
ARCHITECTURE

Architect of Record: LKB Architecture  
2929 Allen Pkwy Suite 200  
Houston, TX 77019  
isa@lkbarchitecture.com | 713.425.3076

**DUDDLEY**

Structural: Dudley  
4102 Imperial Loop Drive  
College Station, TX 77845  
(979) 777-0720

**amc**  
ENGINEERS

MEP: AMC Engineers  
508 E Jackson St # 552  
Burnet, TX 78611  
info@amcengineers.com

**opening design**

Architect: OpeningDesign  
17 S Fairchild | FL 7  
Madison, WI 53703  
ryan@openingdesign.com | 773.425.6456

Date	Description
06/10/2022	Issued for Permit

This project, like most OpeningDesign's projects, is open source (Attribution-ShareAlike 4.0 International-CC BY-SA 4.0)-freely available to any party for future use, assuming the terms such as Attribution and ShareAlike are honored.