

6

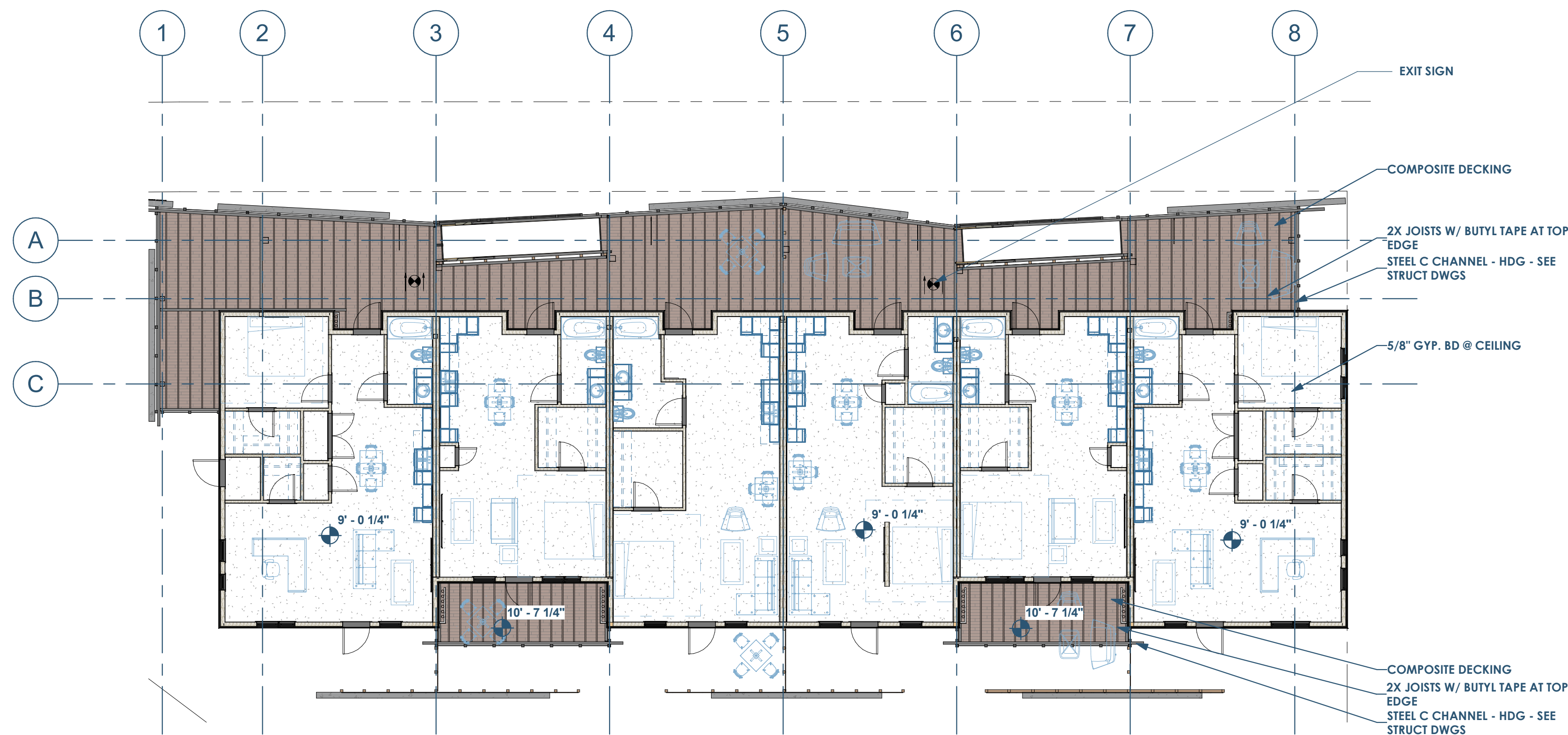
5

4

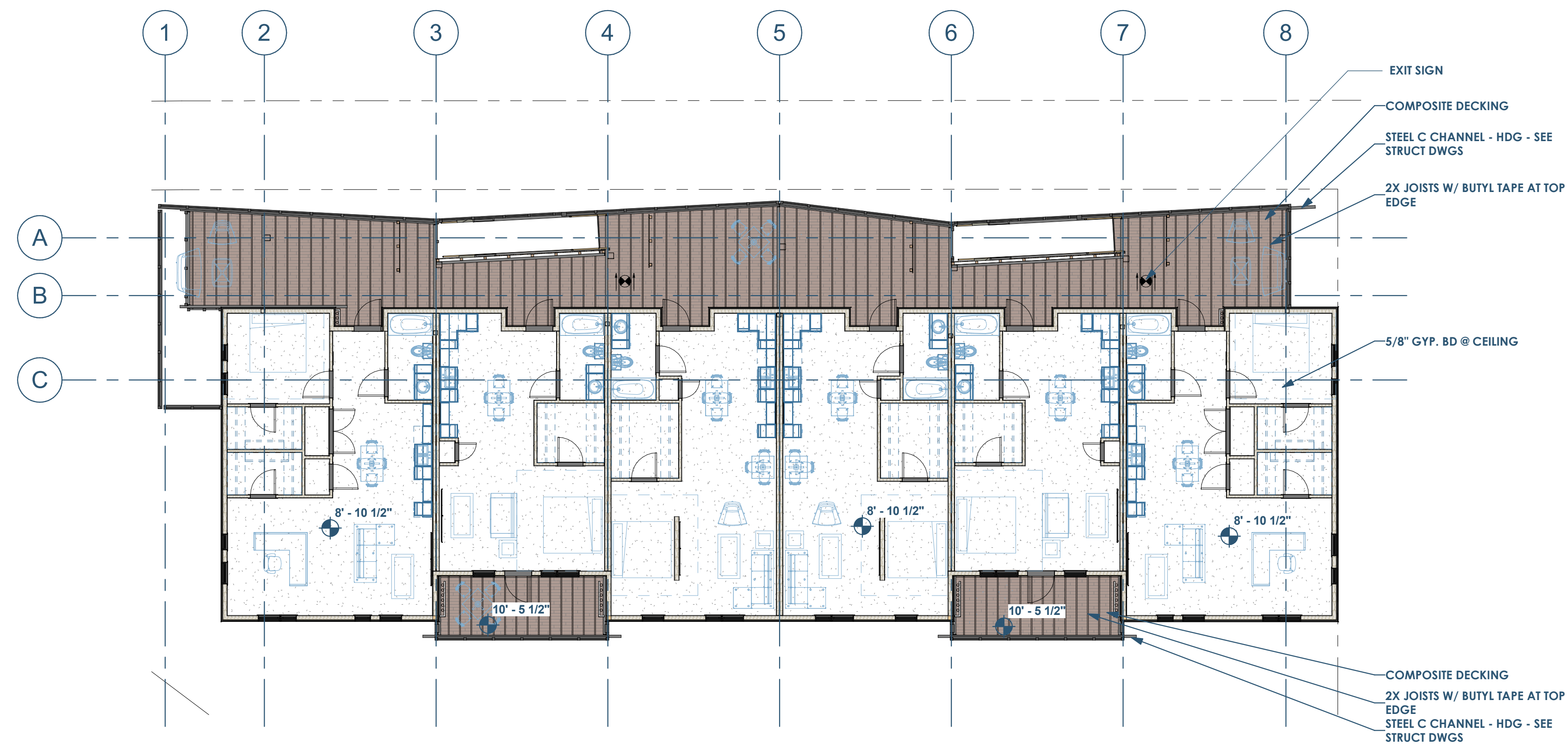
3

2

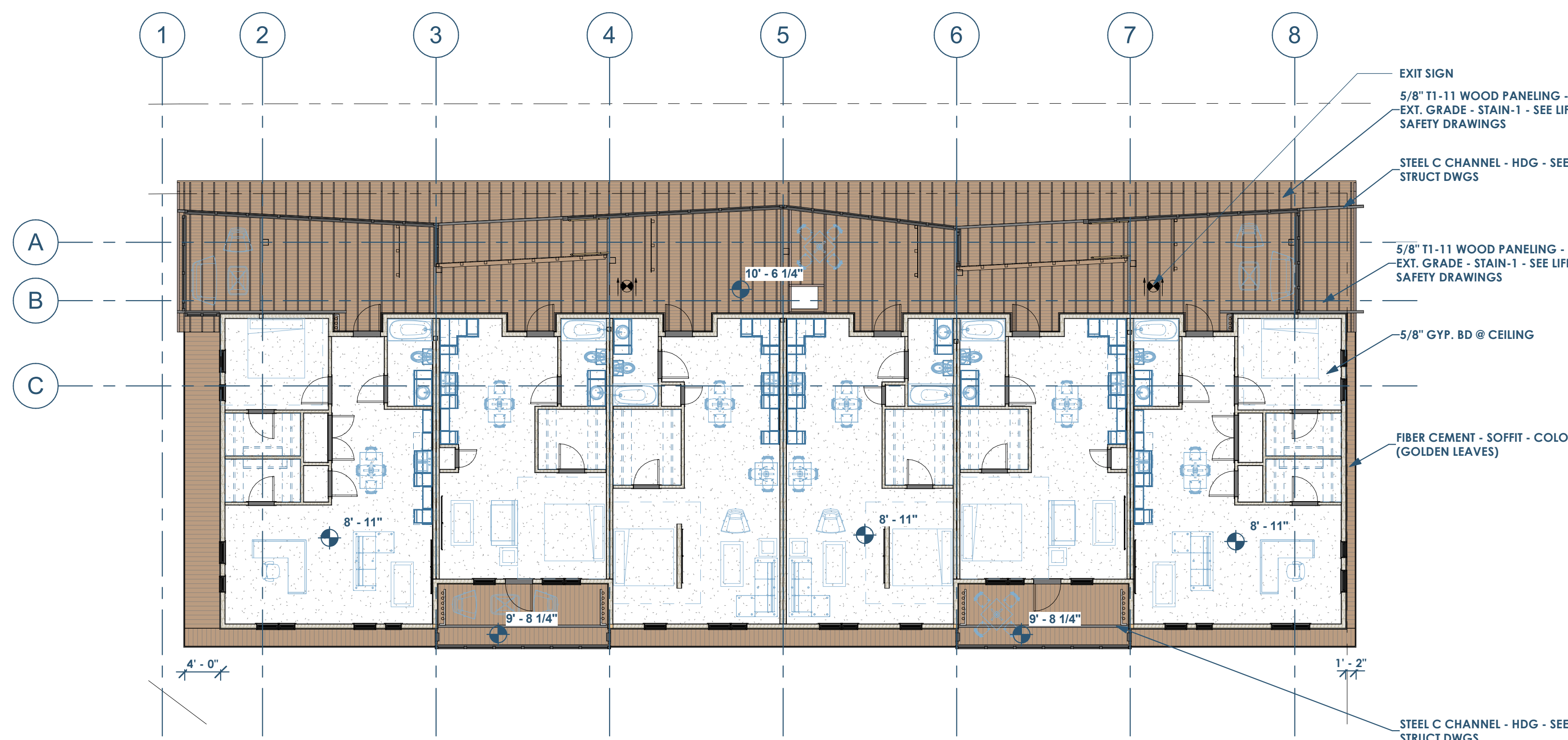
1



6D
A150 RCP - 1ST FLOOR
1" = 10'-0"



3D
A150 RCP - 2ND FLOOR
1" = 10'-0"



6B
A150 RCP - 3RD FLOOR
1" = 10'-0"



This project, like most OpeningDesign's projects, is open source (Attribution-ShareAlike 4.0 International-CC BY-SA 4.0)-freely available to any party for future use, assuming the terms such as Attribution and ShareAlike are honored.

RENOVATION
Wranglers
ENGINEERS
Owner: Renovation Wranglers
102 E 26th St
Bryan, TX 77803
katieneason@wranglers.com | 979.450.9969

LKB
ARCHITECTURE
Architect of Record: LKB Architecture
2929 Allen Pkwy Suite 200
Houston, TX 77019
isa@lkbarchitecture.com | 713.425.3076

DUDDLEY
Structural: Dudley
6102 Imperial Loop Drive
College Station, TX 77845
(979) 777-0720

amc
ENGINEERS
MEP: AMC Engineers
508 E Jackson St # 552
Burnet, TX 78611
info@amcengineers.com

openingdesign
Architect: OpeningDesign
17 S Fairchild | FL 7
Madison, WI 53703
ryan@openingdesign.com | 773.425.6456

Date	Description
06/10/2022	Issued for Permit

REFLECTED CEILING PLANS

MARCO POLO - 101 33RD STREET - CITY OF BRYAN TOWNSITE, BLOCK 96, LOT 3-5 & PT OF 6 & PT OF ALLEY - BRYAN, TX 77803

A150

6

5

4

3

2

1