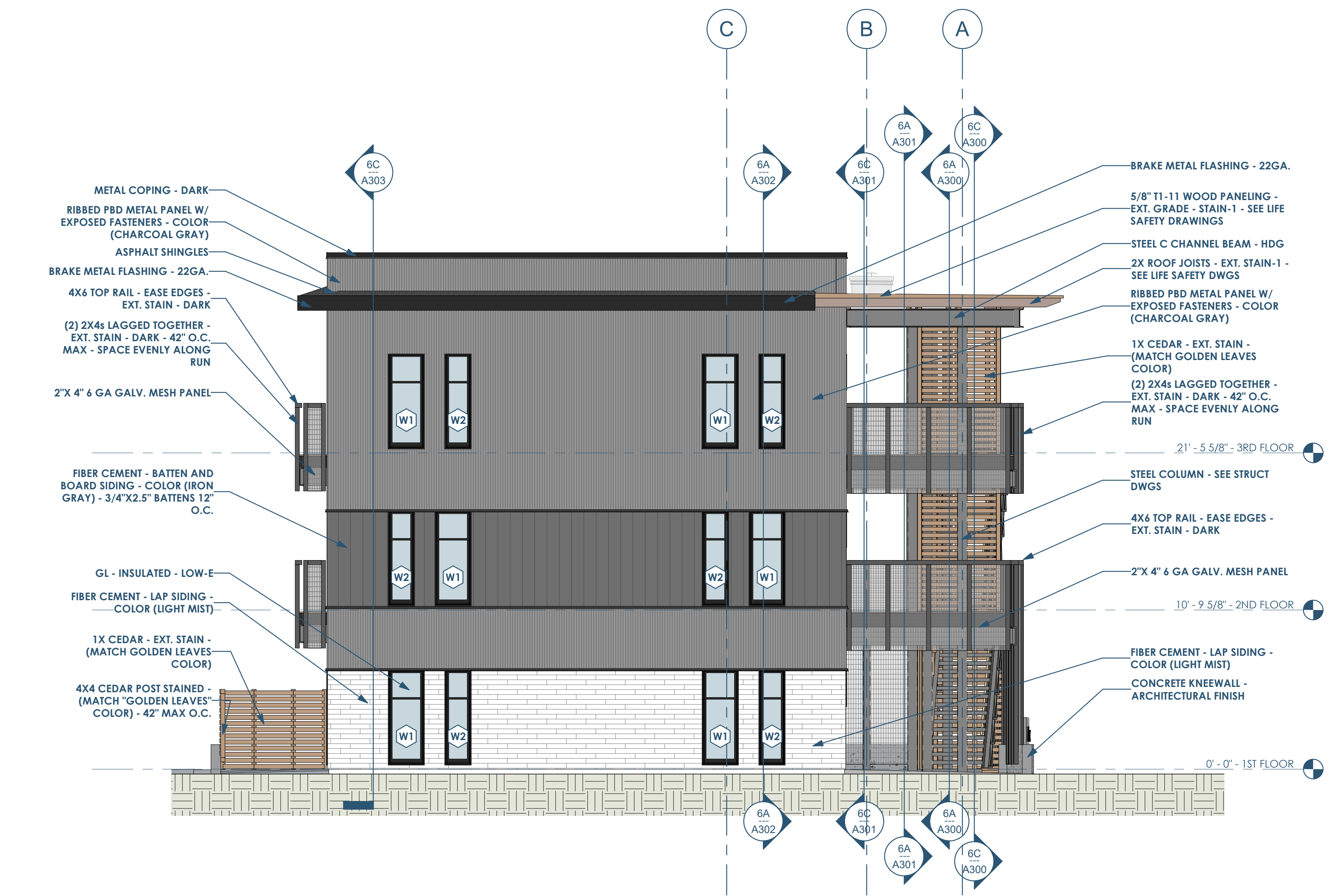




6C A201 BUILDING ELEVATION - SOUTH  
3/16" = 1'-0"

SIMPLIFIED WINDOW SCHEDULE					
TYPE MARK	TYPE	COUNT	WIDTH	HEIGHT	TYPE COMMENTS
W1	SINGLE HUNG - TYPE 2	33	2' - 5 5/8"	6' - 4 7/8"	
W11	SINGLE HUNG - TYPE 2 - TEMPERED	13	2' - 5 5/8"	6' - 4 7/8"	TEMPERED GLAZING
W2	SINGLE HUNG - TYPE 1	28	1' - 9 5/8"	6' - 4 7/8"	
W21	SINGLE HUNG - TYPE 1 - TEMPERED	3	1' - 9 5/8"	6' - 4 7/8"	TEMPERED GLAZING
W3	FIXED PICTURE - TYPE 1	18	2' - 5 1/2"	2' - 5 1/2"	
W4	CASEMENT - TYPE 1	1	2' - 5 5/8"	4' - 7"	ADA REACH REQUIREMENTS FOR TYPE A UNITS
W5	FIXED PICTURE - TYPE 2	1	2' - 5 5/8"	1' - 10"	



6A A201 BUILDING ELEVATION - EAST  
3/16" = 1'-0"

This project, like most OpeningDesign's projects, is open source. (Attribution-ShareAlike 4.0 International-CC BY-SA 4.0)-freely available to any party for future use, assuming the terms such as Attribution and ShareAlike are honored.

**RENOVATION Wranglers**  
 Owner: Renovation Wranglers  
 102 E 26th St  
 Bryan, TX 77803  
 Katerineason@wranglers.com | 979.450.9969

**ARCHITECTURE**  
 Architect of Record: LKB Architecture  
 2929 Allen Pkwy Suite 200  
 Houston, TX 77019  
 isa@lkbarchitecture.com | 713.425.3076

**DUDDLEY**  
 Structural: Dudley  
 4102 Imperial Loop Drive  
 College Station, TX 77845  
 (979) 777-0720

**amc ENGINEERS**  
 MEP: AMC Engineers  
 508 E Jackson St # 552  
 Burnet, TX 78611  
 info@amcengineers.com

**opening design**  
 Architect: OpeningDesign  
 17 S Fairchild | FL 7  
 Madison, WI 53703  
 ryan@openingdesign.com | 773.425.6456

04/10/2022  
 04/20/2022  
 Issued for Permit  
 Locations for Tempered Glazing