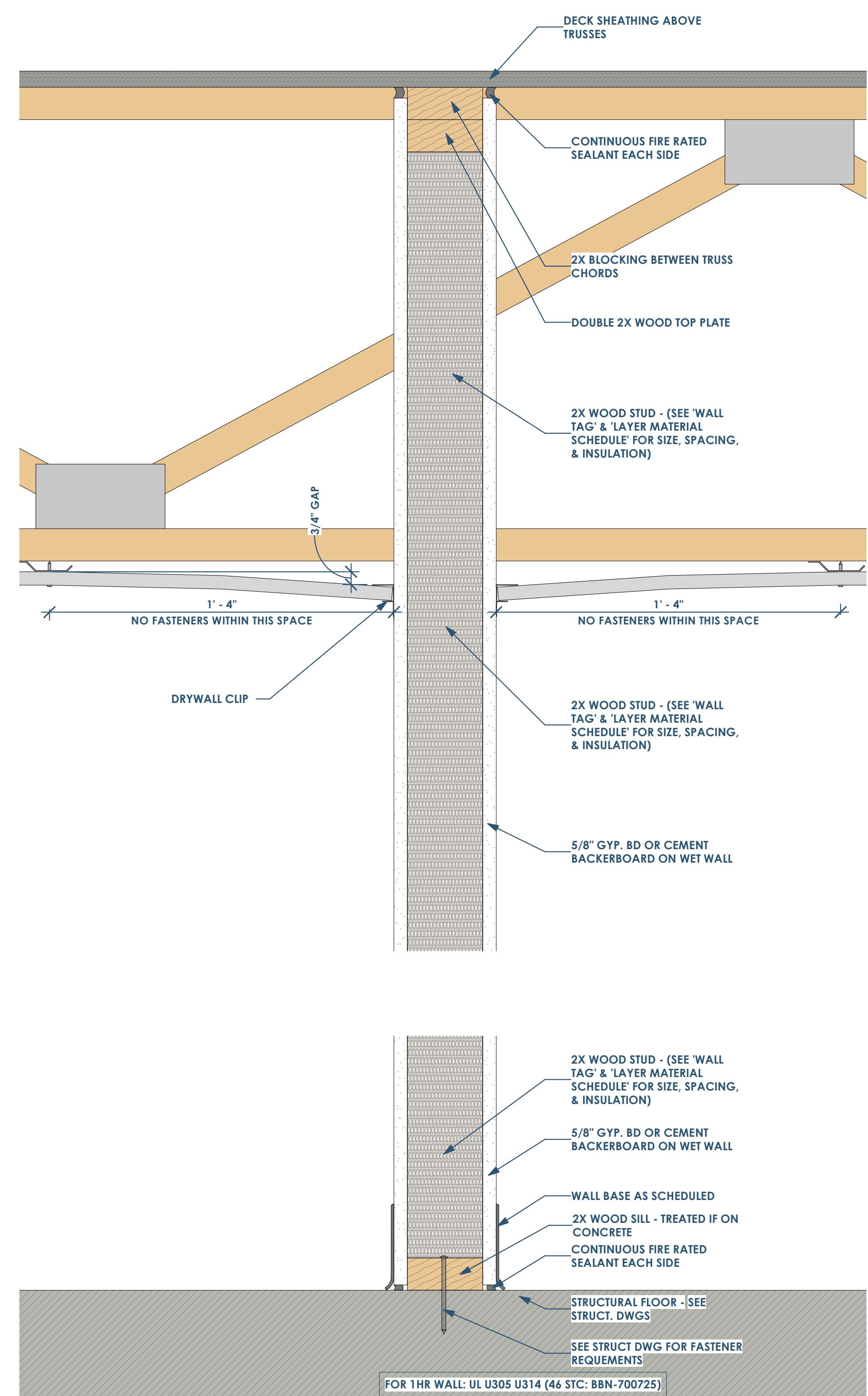
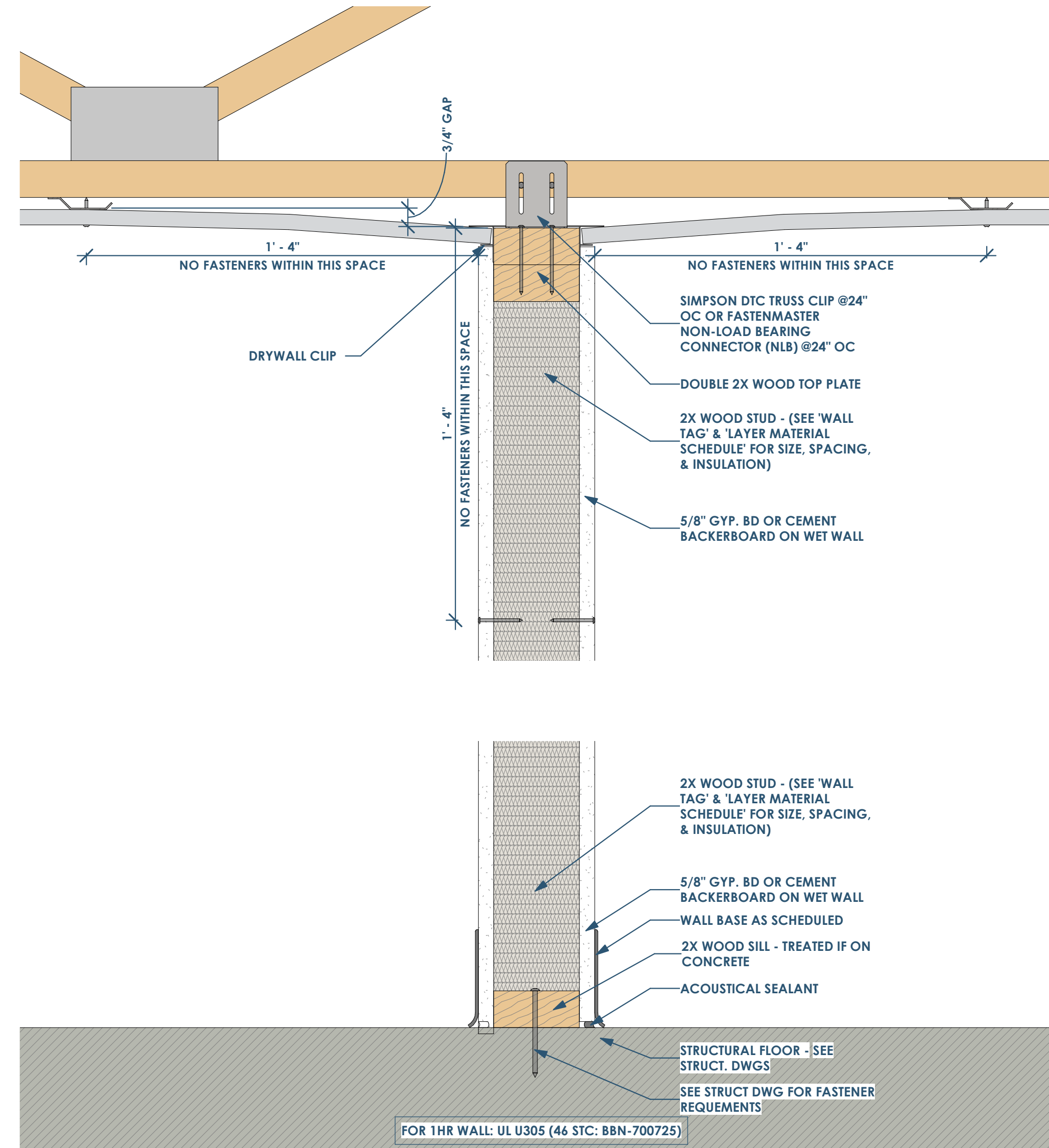


65  
A800 FLOOR/CEILING ASSEMBLY - L521  
1 1/2" = 1'-0"



6A  
A800 W ( ) 1D - FULL HEIGHT - TO DECK - PARTITION (1 HR RATED)  
3" = 1'-0"



5A  
A800 W ( ) 0F FULL HEIGHT PARTITION  
3" = 1'-0"

**PARTITION TAG NOMENCLATURE**

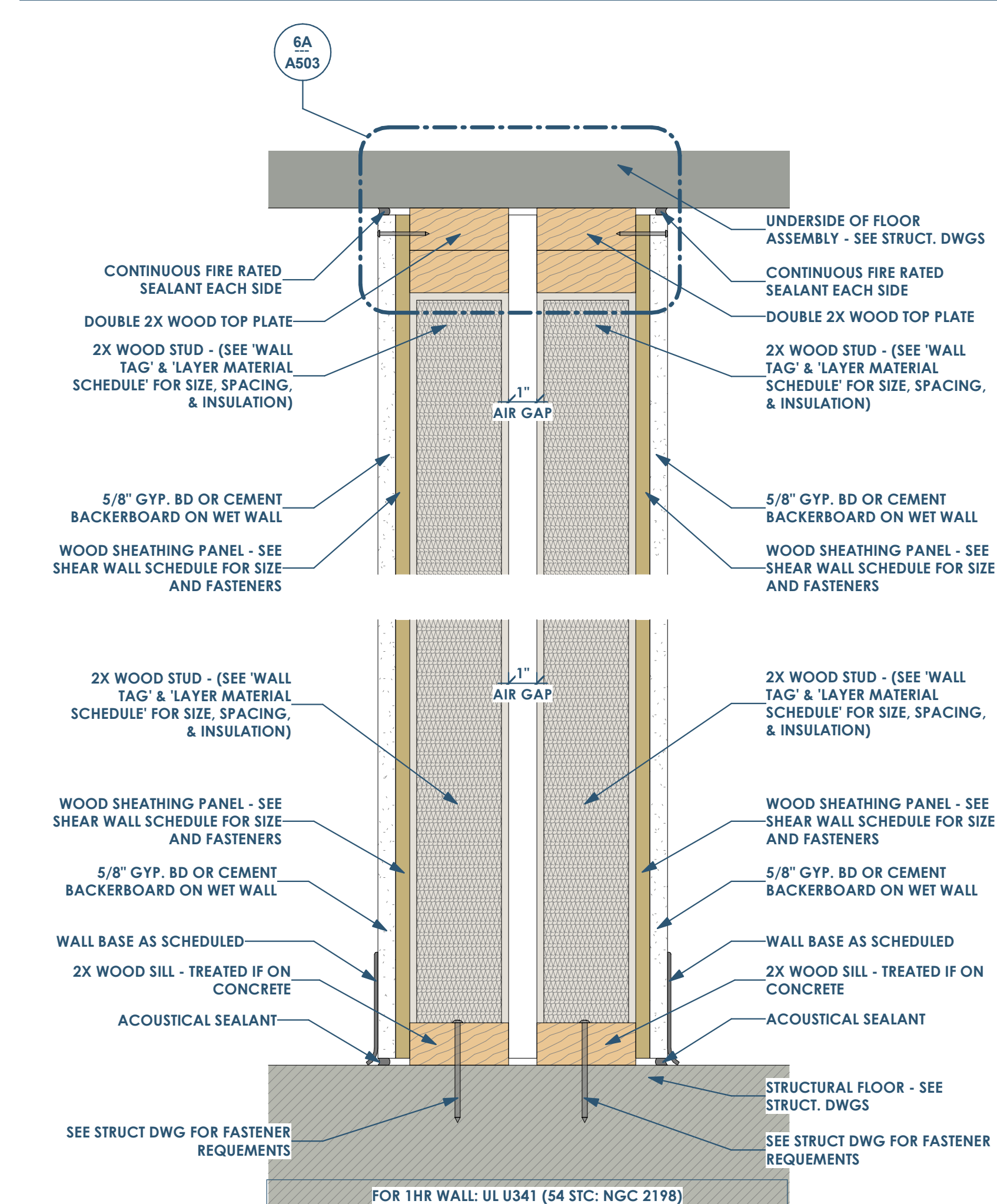
- 1ST LETTER = CORE MATERIAL
  - W= WOOD
  - M=METAL
  - C=CONCRETE
  - B=MASONRY BLOCK
- 2ND LETTER = SIZE OF CORE
  - WOOD: NOMINAL STUD SIZES (EX: 4 = 3 1/2")
  - METAL STUD: (EX 358 = 3 5/8")
  - CONCRETE: ACTUAL WALL THICKNESS (EX: 8 = 8")
  - MASONRY: NOMINAL BRICK MODULES (EX: 8 = 7 5/8")
- 3RD LETTER = LAYER MATERIAL

	LAYER MATERIAL (3RD LETTER)							IF FIRE RATED - UL NUMBER
	LAYER 3	LAYER 2	LAYER 1	CORE	LAYER 1	LAYER 2	LAYER 3	
A=	-	-	5/8" GYP. BD OR CEMENT BACKERBOARD ON WET WALL	STUDS 16" O.C. (20 GA. IF METAL)	5/8" GYP. BD OR CEMENT BACKERBOARD ON WET WALL	-	-	UL U305
B=	-	-	5/8" GYP. BD OR CEMENT BACKERBOARD ON WET WALL	STUDS 16" O.C. (20 GA. IF METAL) BATT INSULATION	5/8" GYP. BD OR CEMENT BACKERBOARD ON WET WALL	-	-	UL U305
C=	-	-	5/8" GYP. BD OR CEMENT BACKERBOARD ON WET WALL	STUDS 16" O.C. (20 GA. IF METAL)	(PROVIDE 1/4" AIR GAP IF AGAINST CONCRETE OR MASONRY)	-	-	-
D=	-	-	5/8" GYP. BD OR CEMENT BACKERBOARD ON WET WALL	STUDS 16" O.C. (20 GA. IF METAL) BATT INSULATION	(PROVIDE 1/4" AIR GAP IF AGAINST CONCRETE OR MASONRY) - USE TREATED WOOD STUDS IF IN CONTACT WITH CONCRETE/MASONRY	-	-	-
G=	-	-	5/8" GYP. BD OR CEMENT BACKERBOARD ON WET WALL	SEE WALL STUD SCHEDULE - STRUCT. DWGS. - W/(R-19) BATT INSULATION	1" AIR GAP (PART OF A DOUBLE STUD WALL)	-	-	UL 341
H=	-	5/8" GYP. BD OR CEMENT BACKERBOARD ON WET WALL	SHEATHING - SEE STRUCT. DWGS	SEE WALL STUD SCHEDULE - STRUCT. DWGS. - W/(R-19) BATT INSULATION	1" AIR GAP (PART OF A DOUBLE STUD WALL)	-	-	UL 341
Q=	FIBER CEMENT - CLAPBOARD SIDING	DRAINAGE WRAP - ASTM 2273	SHEATHING - SEE STRUCT. DWGS	SEE WALL STUD SCHEDULE - STRUCT. DWGS. - W/(R-19) BATT INSULATION	5/8" GYP. BD OR CEMENT BACKERBOARD ON WET WALL	-	-	-
R=	FIBER CEMENT - BATTEN AND BOARD SIDING	DRAINAGE WRAP - ASTM 2273	SHEATHING - SEE STRUCT. DWGS	SEE WALL STUD SCHEDULE - STRUCT. DWGS. - W/(R-19) BATT INSULATION	5/8" GYP. BD OR CEMENT BACKERBOARD ON WET WALL & SHEATHING LAYER, IF AT PARTY WALL (SEE STRUCT DWGS)	-	-	-
S=	7/8" CORRUGATED METAL SIDING	DRAINAGE WRAP - ASTM 2273	SHEATHING - SEE STRUCT. DWGS	SEE WALL STUD SCHEDULE - STRUCT. DWGS. - W/(R-19) BATT INSULATION	5/8" GYP. BD OR CEMENT BACKERBOARD ON WET WALL & SHEATHING LAYER, IF AT PARTY WALL (SEE STRUCT DWGS)	-	-	-
T=	FIBER CEMENT - CLAPBOARD SIDING	DRAINAGE WRAP - ASTM 2273	5/8" FIBERGLASS MAT GYPSUM SHEATHING	SEE WALL STUD SCHEDULE - STRUCT. DWGS. - W/(R-19) BATT INSULATION	5/8" GYP. BD OR CEMENT BACKERBOARD ON WET WALL & SHEATHING LAYER, IF AT PARTY WALL (SEE STRUCT DWGS)	-	-	UL U305
U=	FIBER CEMENT - BATTEN AND BOARD SIDING	DRAINAGE WRAP - ASTM 2273	5/8" FIBERGLASS MAT GYPSUM SHEATHING	SEE WALL STUD SCHEDULE - STRUCT. DWGS. - W/(R-19) BATT INSULATION	5/8" GYP. BD OR CEMENT BACKERBOARD ON WET WALL & SHEATHING LAYER, IF AT PARTY WALL (SEE STRUCT DWGS)	-	-	UL U305
V=	7/8" CORRUGATED METAL SIDING	DRAINAGE WRAP - ASTM 2273	5/8" FIBERGLASS MAT GYPSUM SHEATHING	SEE WALL STUD SCHEDULE - STRUCT. DWGS. - W/(R-19) BATT INSULATION	5/8" GYP. BD OR CEMENT BACKERBOARD ON WET WALL & SHEATHING LAYER, IF AT PARTY WALL (SEE STRUCT DWGS)	-	-	UL U305
W=	7/8" CORRUGATED METAL SIDING	DRAINAGE WRAP - ASTM 2273	SHEATHING - SEE STRUCT. DWGS	SEE WALL STUD SCHEDULE - STRUCT. DWGS. - W/(R-19) BATT INSULATION	SHEATHING - SEE STRUCT. DWGS	DRAINAGE WRAP - ASTM 2273	7/8" CORRUGATED METAL SIDING	-
X=	7/8" CORRUGATED METAL SIDING	DRAINAGE WRAP - ASTM 2273	5/8" FIBERGLASS MAT GYPSUM SHEATHING	SEE WALL STUD SCHEDULE - STRUCT. DWGS. - W/(R-19) BATT INSULATION	5/8" FIBERGLASS MAT GYPSUM SHEATHING	DRAINAGE WRAP - ASTM 2273	7/8" CORRUGATED METAL SIDING	UL U305
Z=	-	-	16 GA PERFORATED GALV. STEEL	2.5" 12GA. STRUCTURAL METAL STUD - CFP90 GALV.	-	-	-	-

- 4TH NUMBER: FIRE RATING
  - 0=0 HOUR
  - 1=1 HOUR
  - 2=2 HOUR
  - 3=3 HOUR
  - 5=1/2 HOUR

- 5TH (AND BEYOND) LETTERS = MODIFIERS
  - A=PARTIAL HEIGHT PARTITION (WALL LAYER 1, 2, & 3 TO EXTEND 4" ABOVE FINISHED CEILING HEIGHT)
  - B=PARTIAL HEIGHT WALL (WALL LAYER 1, 2, & 3 TO TERMINATE AT OR BELOW HUNG CEILING)
  - D=FULL HEIGHT TO UNDERSIDE OF STRUCTURAL DECK/SHEATHING (CORE AND WALL LAYER 1, 2, & 3 TO TERMINATE AT STRUCTURAL DECK)
  - F=FULL HEIGHT TO THE BOTTOM OF STRUCTURE
  - K=KNEE WALL PARTITION
  - R=FURRED OUT WALL

- EXAMPLE: M358B0AR
  - M=METAL
  - 358=3 5/8" METAL STUD
  - B=20 GA METAL STUDS 16" O.C. W/ BATT INSULATION
  - 0=0 HOUR
  - A=PARTIAL HEIGHT PARTITION (WALL LAYER 1, 2, & 3 TO EXTEND 4" ABOVE FINISHED CEILING HEIGHT)
  - R=FURRED OUT WALL



2A  
A800 W4 ( ) 5F PARTY WALL - 1 HR RATED WALL (ONLY NEEDS TO BE 1/2 HR RATED)  
3" = 1'-0"

This project, like most OpeningDesign's projects, is open source (Attribution-ShareAlike 4.0 International-CC BY-SA 4.0)-freely available to any party for future use, assuming the terms such as Attribution and ShareAlike are honored.

**RENOVATION**  
Wranglers  
Owner: Renovation Wranglers  
102 E 26th St  
Bryan, TX 77803  
kate@renovationtime.com | 979.450.9969

**ARCHITECTURE**  
Architect of Record: LKB Architecture  
2929 Allen Pkwy Suite 200  
Houston, TX 77019  
isa@lkbarchitecture.com | 713.425.3076

**DUDDLEY**  
Structural: Dudley  
6102 Imperial Loop Drive  
College Station, TX 77845  
(979) 777-0720

**amc**  
ENGINEERS  
MEP: AMC Engineers  
508 E Jackson St # 552  
Burnet, TX 78611  
info@amcengineers.com

**openingdesign**  
Architect: OpeningDesign  
17 S Fairchild | FL 7  
Madison, WI 53703  
ryan@openingdesign.com | 773.425.6456

Date	Description
06/02/2022	Review before Permit