

6

5

4

3

2

1

E

D

C

B

A

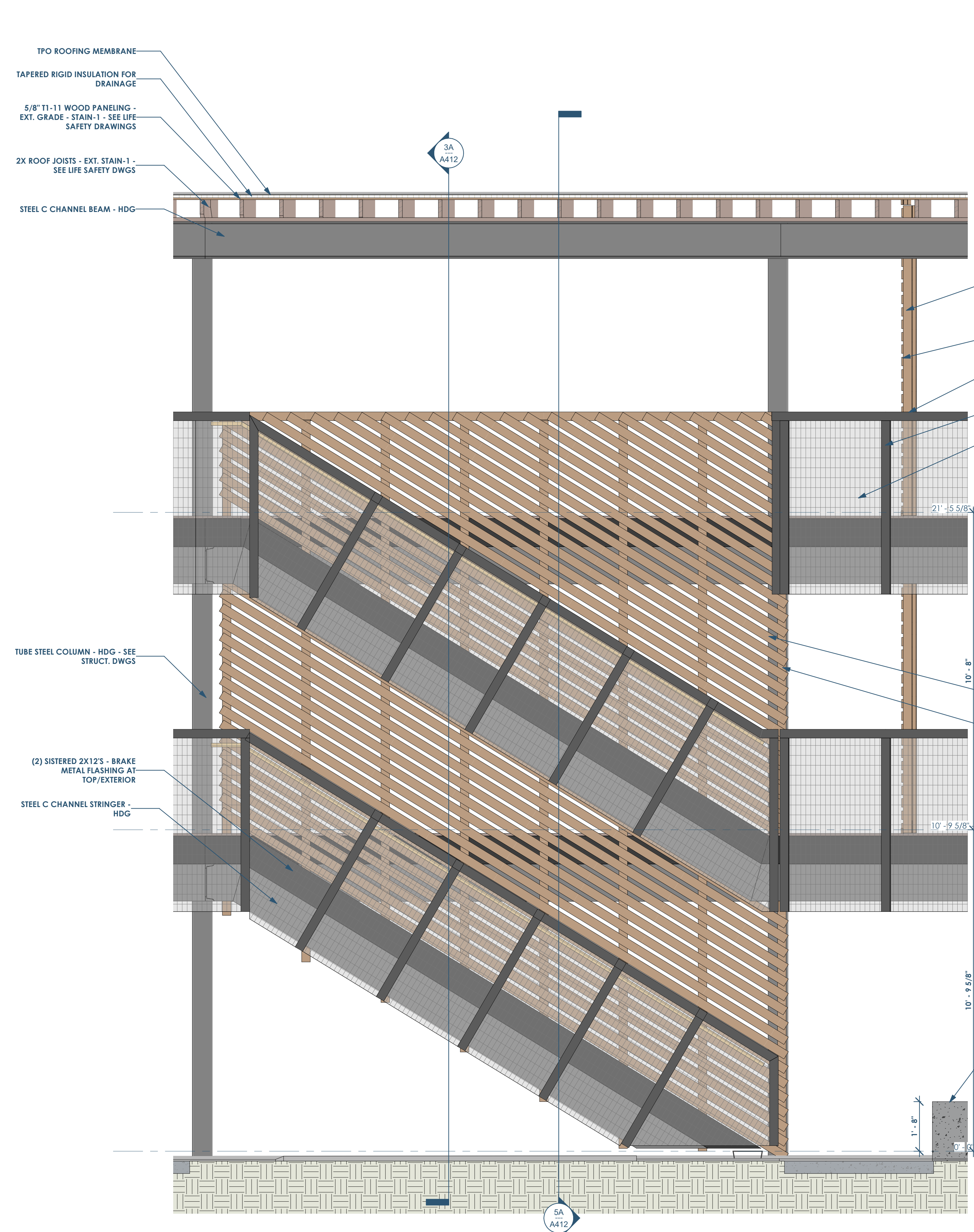
E

D

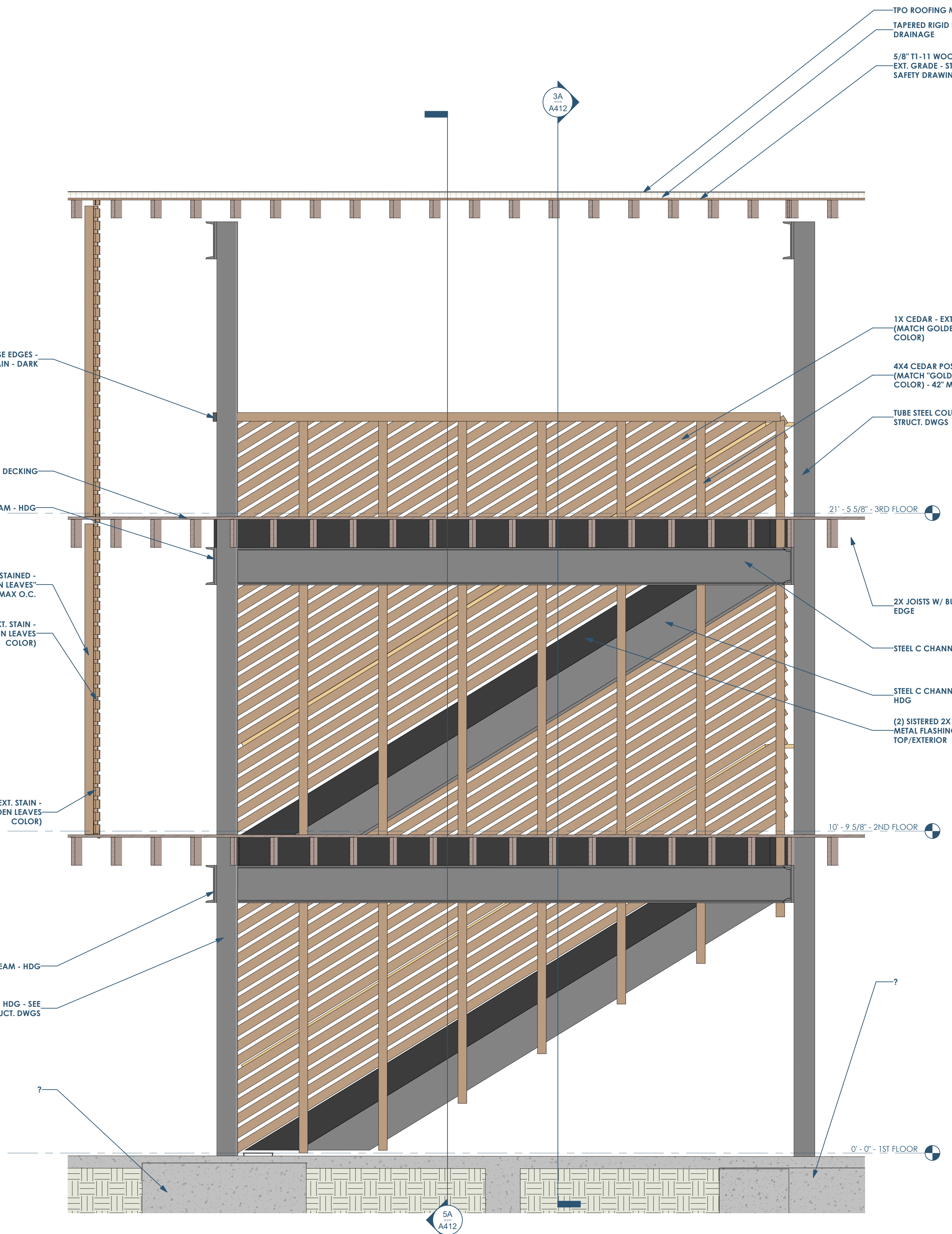
C

B

A



6A A411 STAIR VIEW - FRONT OF STAIR  
1/2" = 1'-0"



3A A412 STAIR SECTION - CUT THROUGH BALCONY  
1/2" = 1'-0"

This project, like most OpeningDesign's projects, is open source (Attribution-ShareAlike 4.0 International-CC BY-SA 4.0)-freely available to any party for future use, assuming the terms such as Attribution and ShareAlike are honored.

**RENOVATION**  
 Wranglers  
 Owner: Renovation Wranglers  
 102 E 26th St  
 Bryan, TX 77803  
 kate@renovations.com | 979.450.9969

**LKB**  
 ARCHITECTURE  
 Architect of Record: LKB Architecture  
 2929 Allen Pkwy Suite 200  
 Houston, TX 77019  
 isa@lkbarchitecture.com | 713.425.3076

**DUDDLEY**  
 Structural: Dudley  
 4102 Imperial Loop Drive  
 College Station, TX 77845  
 (979) 777-0720

**amc**  
 ENGINEERS  
 MEP: AMC Engineers  
 508 E Jackson St # 552  
 Burnet, TX 78611  
 info@amcengineers.com

**openingdesign**  
 Architect: OpeningDesign  
 17 S Fairchild | FL 7  
 Madison, WI 53703  
 ryan@openingdesign.com | 773.425.6456

Date	Description
06/02/2022	Review before Permit