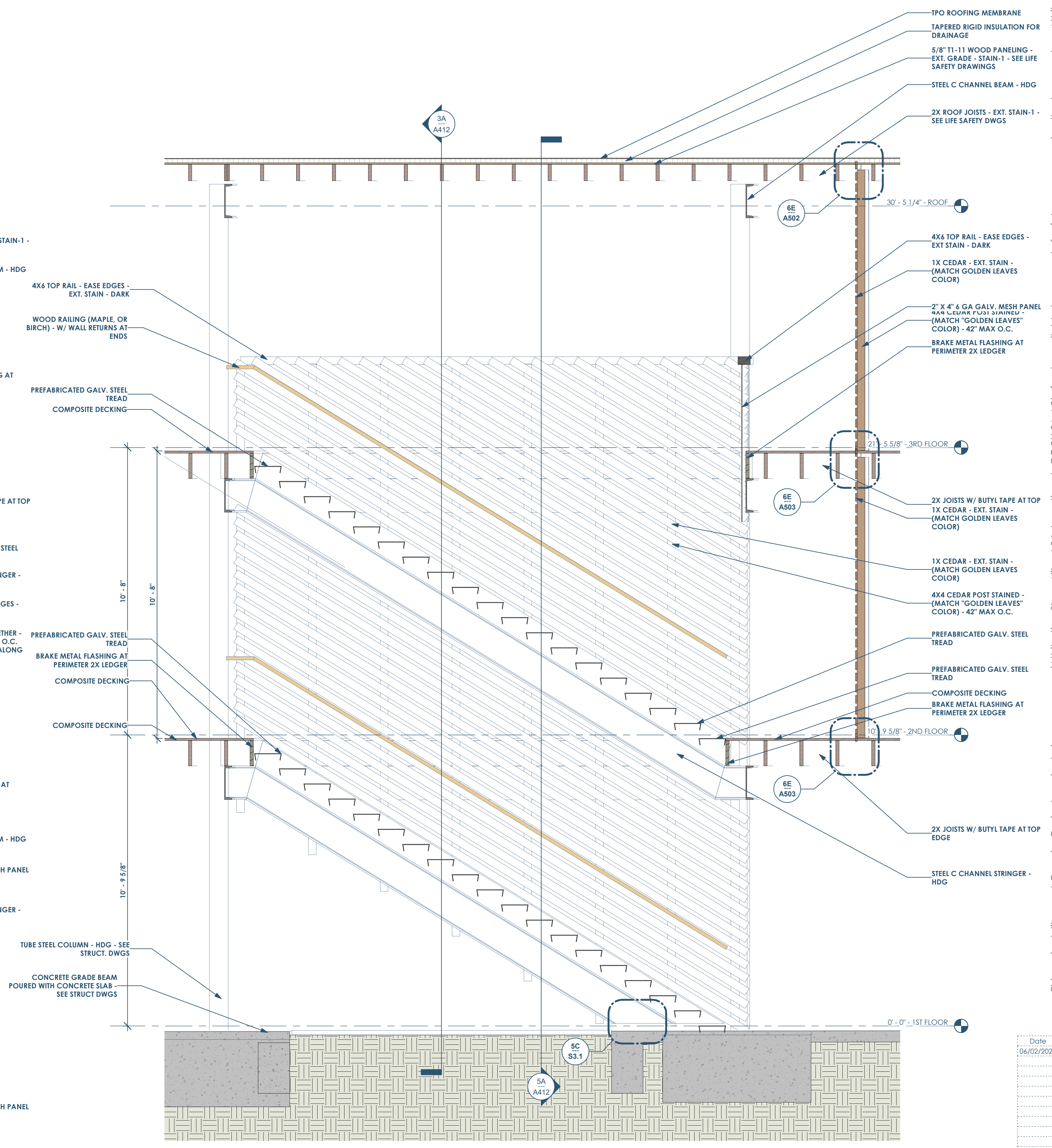


6A A410 STAIR SECTION - LOOKING NORTH
1/2" = 1'-0"



3A A410 STAIR SECTION - LOOKING SOUTH
1/2" = 1'-0"

This project, like most OpeningDesign's projects, is open source (Attribution-ShareAlike 4.0 International-CC BY-SA 4.0)-freely available to any party for future use, assuming the terms such as Attribution and ShareAlike are honored.

RENOVATION Wranglers
 Owner: Renovation Wranglers
 102 E 26th St
 Bryan, TX 77803
 kate@renovations.com | 979.450.9969

LKB ARCHITECTURE
 Architect of Record: LKB Architecture
 2929 Allen Pkwy Suite 200
 Houston, TX 77019
 isa@lkbarchitecture.com | 713.425.3076

DUDLEY
 Structural: Dudley
 6102 Imperial Loop Drive
 College Station, TX 77845
 (979) 777-0720

amc ENGINEERS
 MEP: AMC Engineers
 508 E Jackson St # 552
 Burnet, TX 78611
 info@amcengineers.com

Date	Description
06/02/2022	Review before Permit