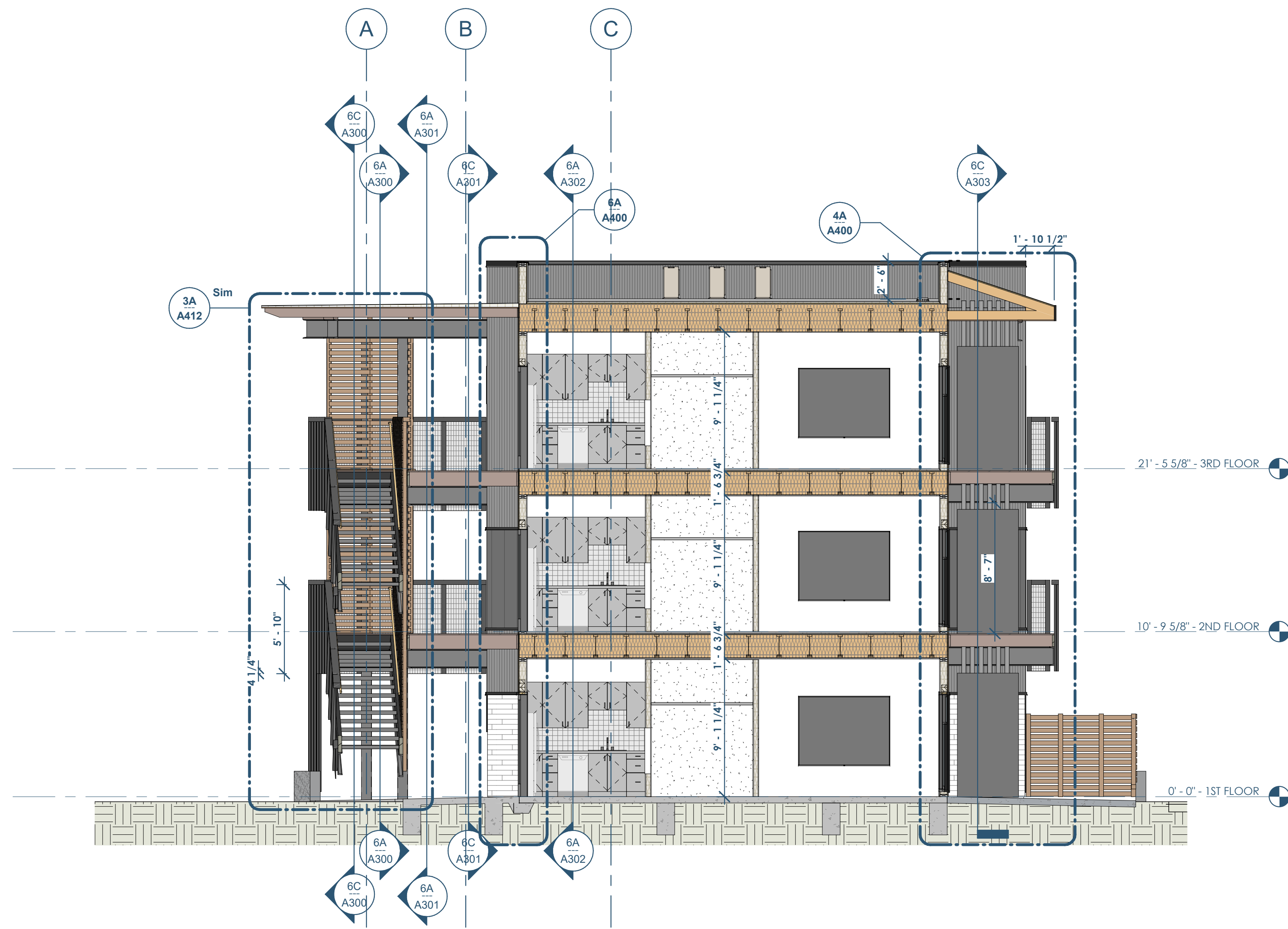
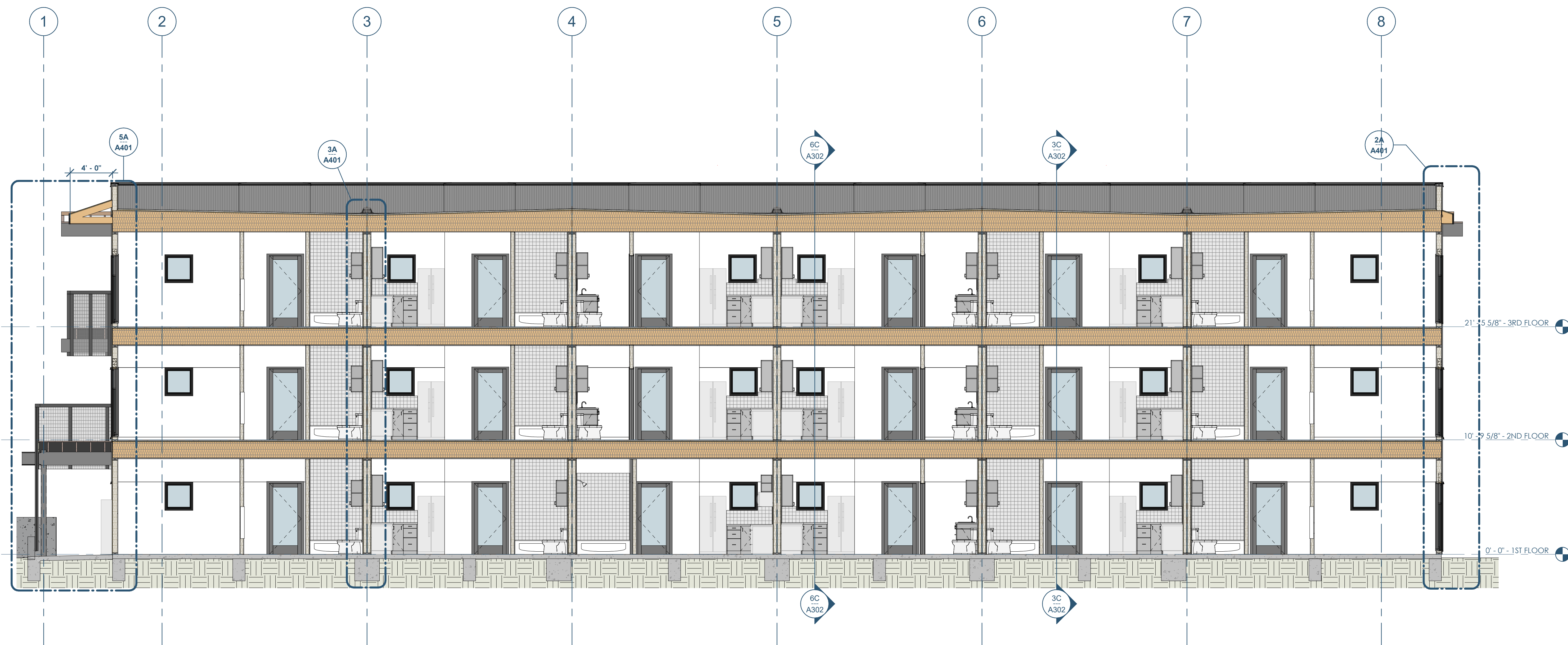


6C A302 BUILDING SECTION - THRU LARGE STUDIO - LOOKING EAST
3/16" = 1'-0"



3C A302 BUILDING SECTION - THRU SMALL STUDIO - LOOKING EAST
3/16" = 1'-0"



6A A302 BUILDING SECTION - EAST/WEST - LOOKING NORTH
3/16" = 1'-0"

RENOVATION
Wranglers
Engineers

Owner: Renovation Wranglers
102 E 26th St
Bryan, TX 77803
Kateneason@rwe.com | 979.450.9969

LKB
ARCHITECTURE

Architect of Record: LKB Architecture
2929 Allen Pkwy Suite 200
Houston, TX 77019
isa@lkbarchitecture.com | 713.425.3076

DUDDLEY

Structural: Dudley
4102 Imperial Loop Drive
College Station, TX 77845
(979) 777-0720

amc
ENGINEERS

MEP: AMC Engineers
508 E Jackson St # 552
Burnet, TX 78611
info@amcengineers.com

opening design

Architect: OpeningDesign
17 S Fairchild | FL 7
Madison, WI 53703
ryan@openingdesign.com | 773.425.6456

Date	Description
06/02/2022	Review before Permit

This project, like most OpeningDesign's projects, is open source (Attribution-ShareAlike 4.0 International-CC BY-SA 4.0)-freely available to any party for future use, assuming the terms such as Attribution and ShareAlike are honored.