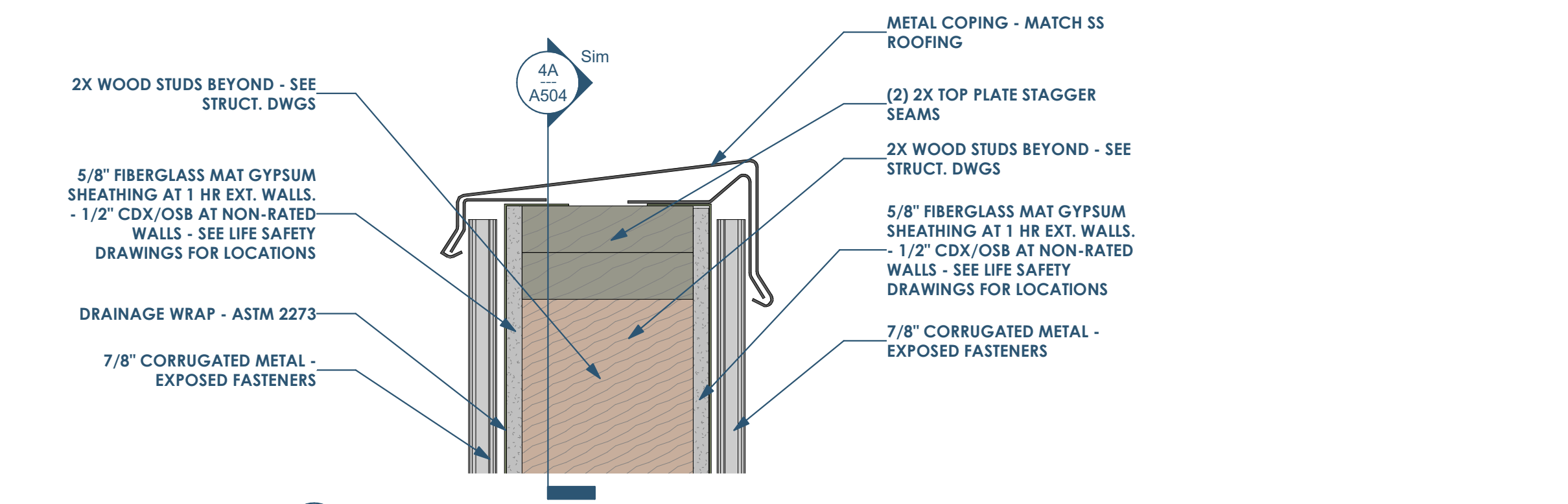
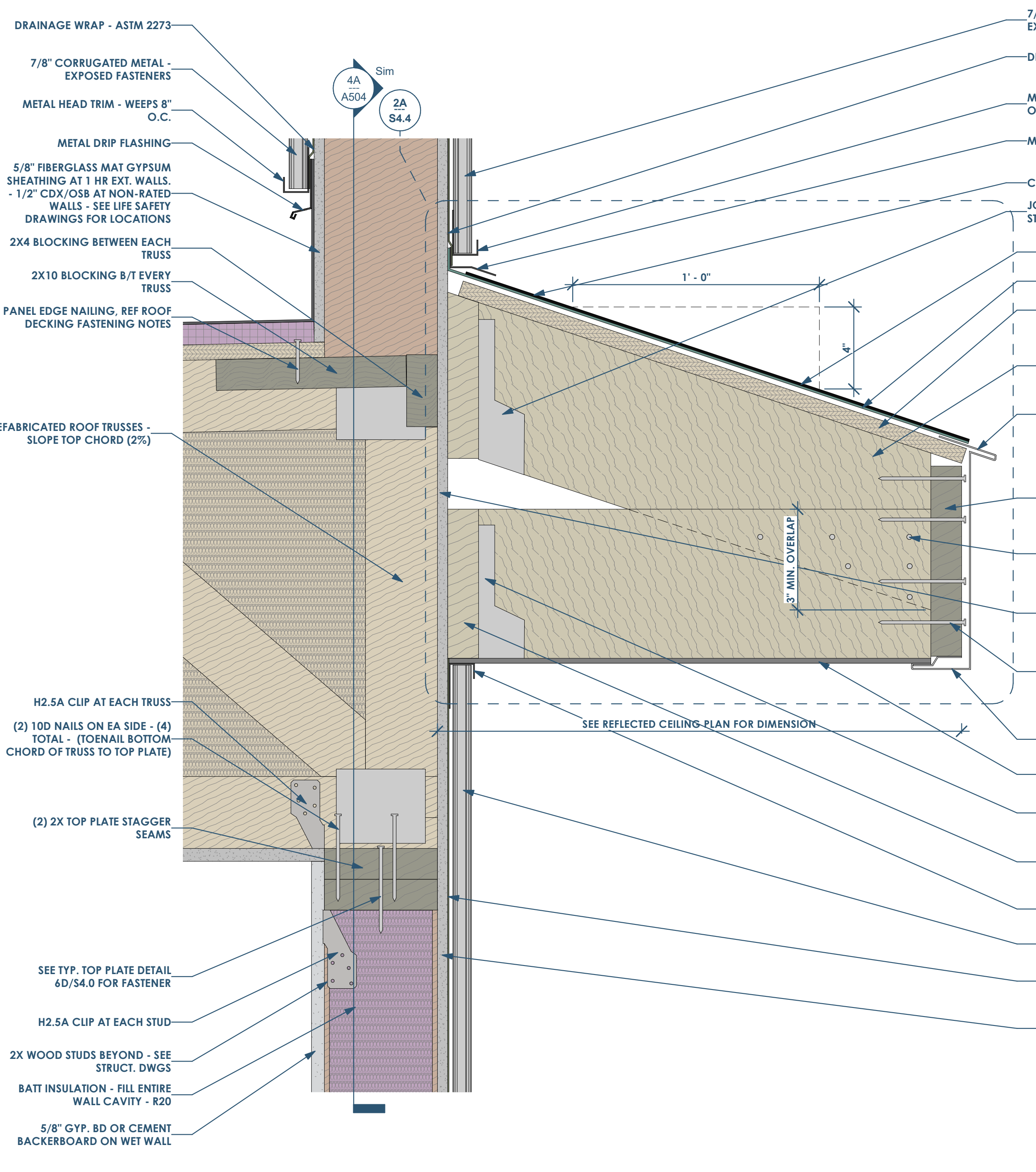


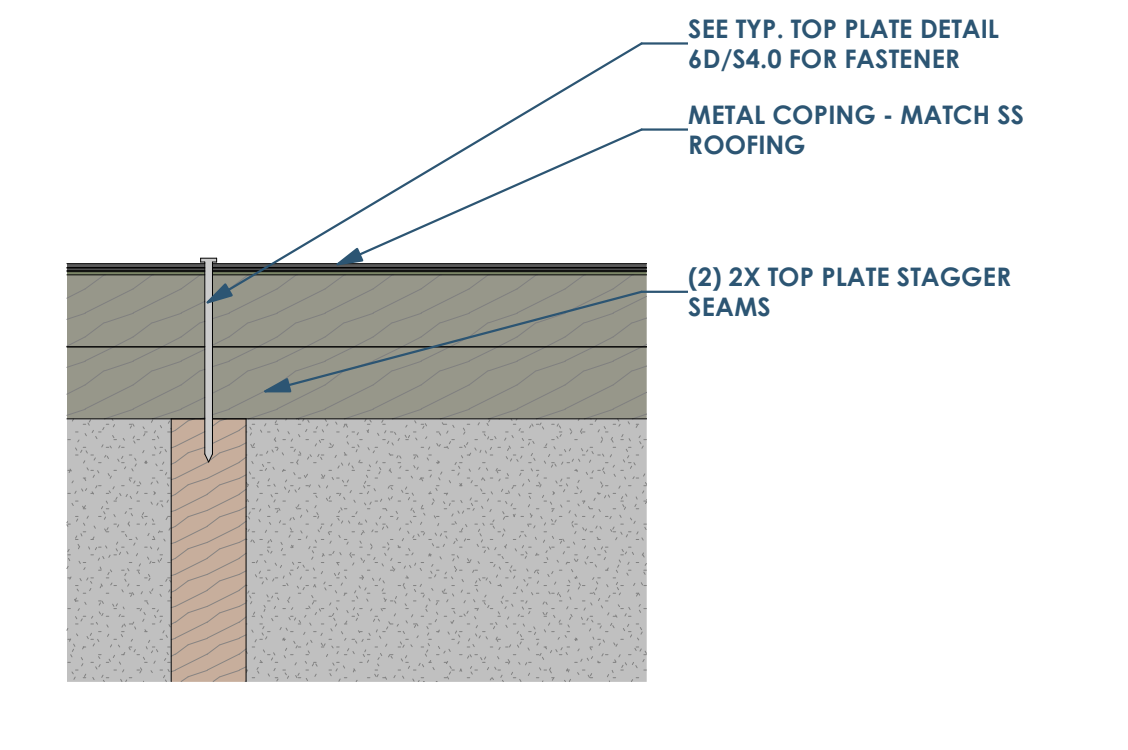
6E SECTION DETAIL AT OUTRIGGER 1 1/2" = 1'-0"



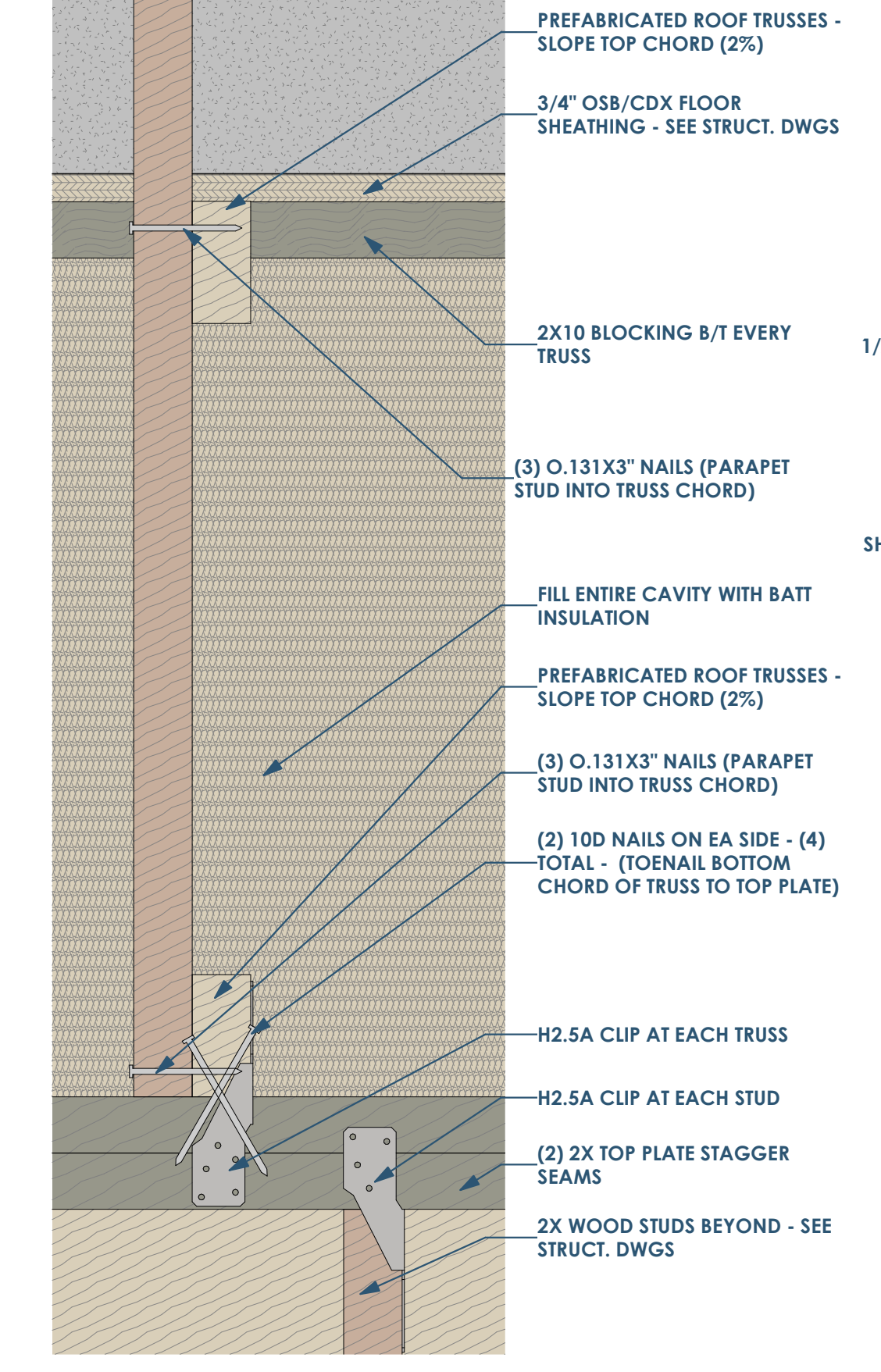
6D SECTION DETAIL - TOP OF PARAPET 3" = 1'-0"



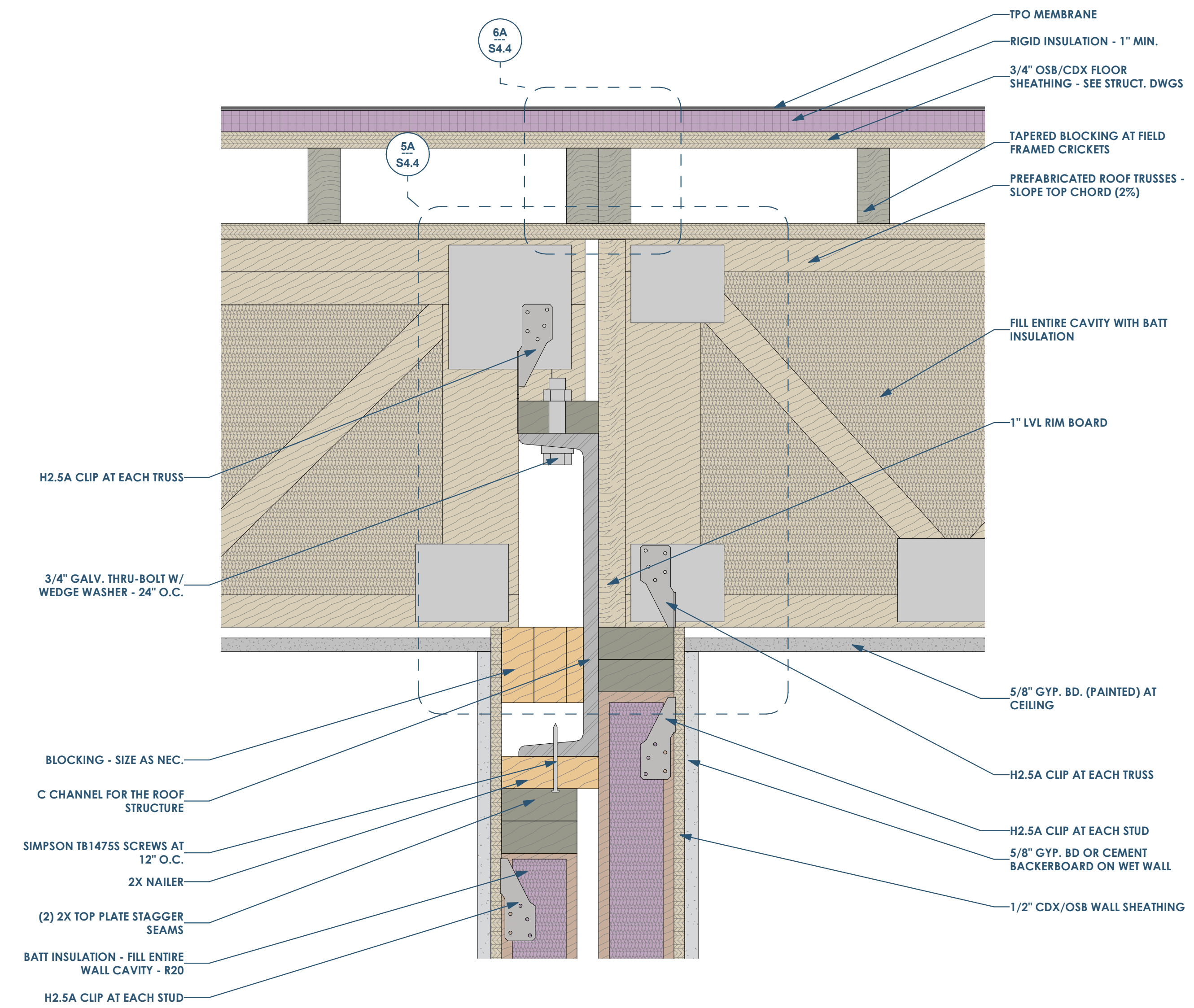
4A SECTION DETAIL - AT PARAPET WALL 3" = 1'-0"



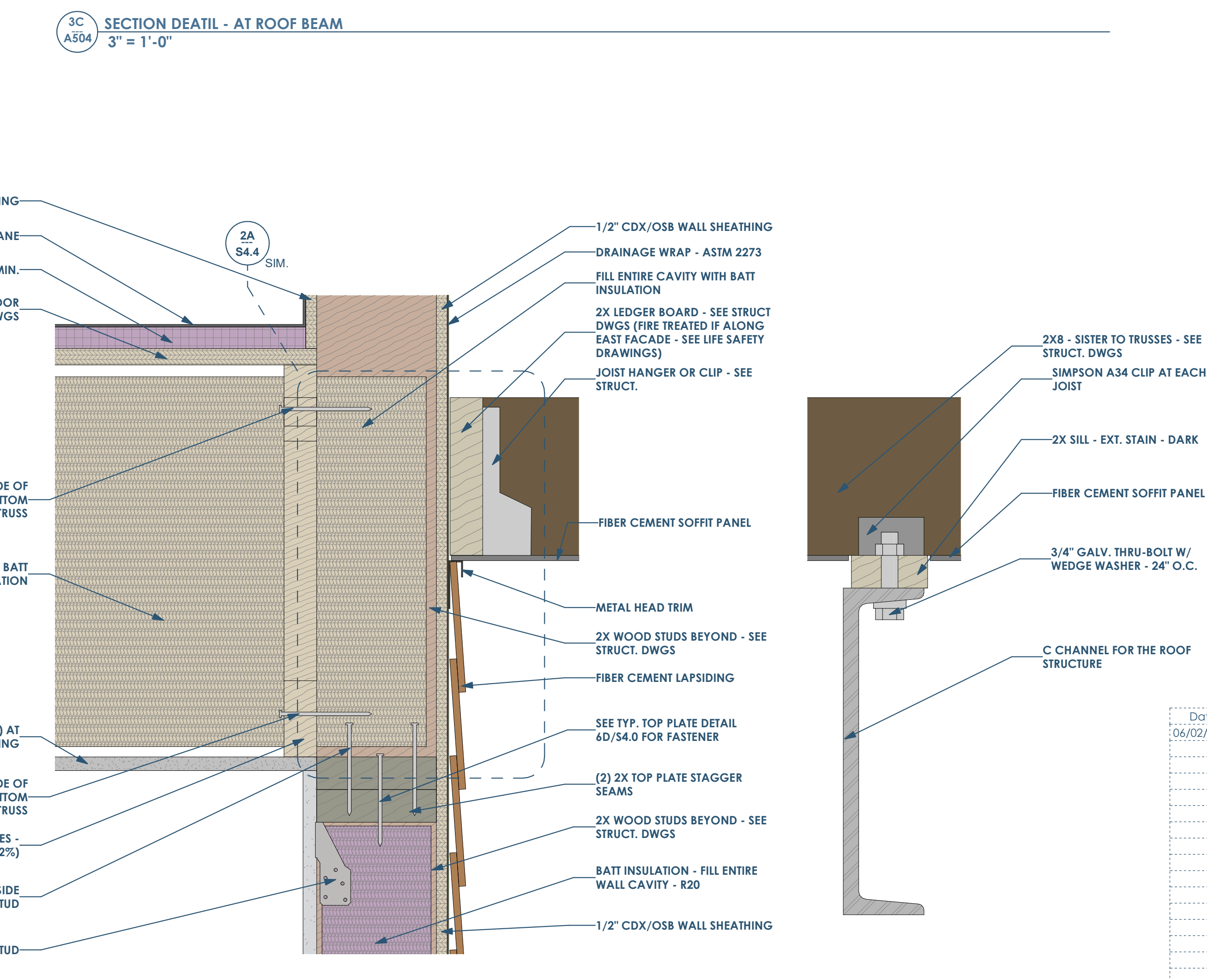
3C SECTION DETAIL - AT ROOF BEAM 3" = 1'-0"



3A SECTION DETAIL - AT SOFFIT AND ALCOVE 3" = 1'-0"



2A SECTION DETAIL - ALCOVE AT ROOF BEAM 3" = 1'-0"



6A SECTION DETAIL - ROOF AND SOFFIT 3" = 1'-0"

**RENOVATION**  
Wranglers

Owner: Renovation Wranglers  
102 E 26th St  
Bryan, TX 77803  
kate@renovations.com | 979.450.9969

**DUDDLEY**  
ARCHITECTURE  
Architect of Record: LKB Architecture  
2929 Allen Pkwy Suite 200  
Houston, TX 77019  
isa@lkbarchitecture.com | 713.425.3076

**MEP: AMC ENGINEERS**  
MEP: AMC Engineers  
508 E Jackson St # 552  
Burnet, TX 78611  
info@amcengineers.com

This project, like most OpeningDesign's projects, is open source (Attribution-ShareAlike 4.0 International-CC BY-SA 4.0)-freely available to any party for future use, assuming the terms such as Attribution and ShareAlike are honored.

Date	Description
06/02/2022	Review before Permit

**openingdesign**  
Architect: OpeningDesign  
17 S Fairchild | FL 7  
Madison, WI 53703  
ryan@openingdesign.com | 773.425.6456