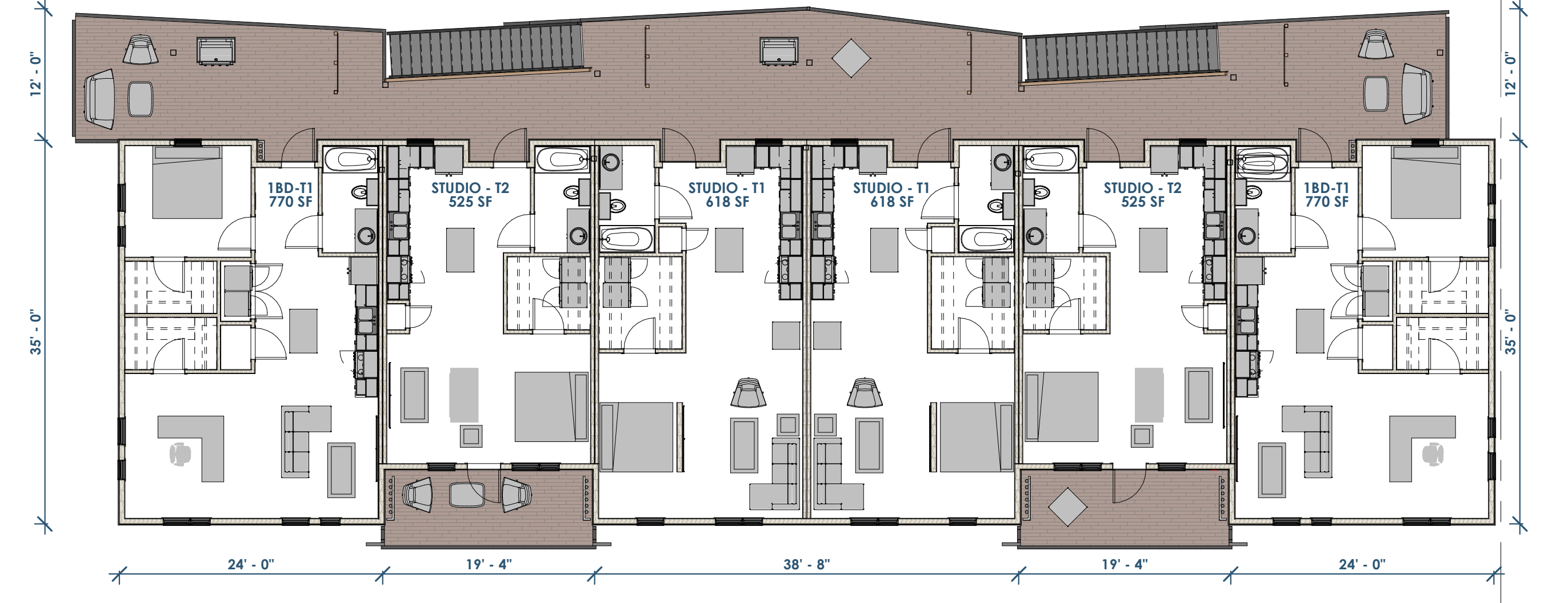
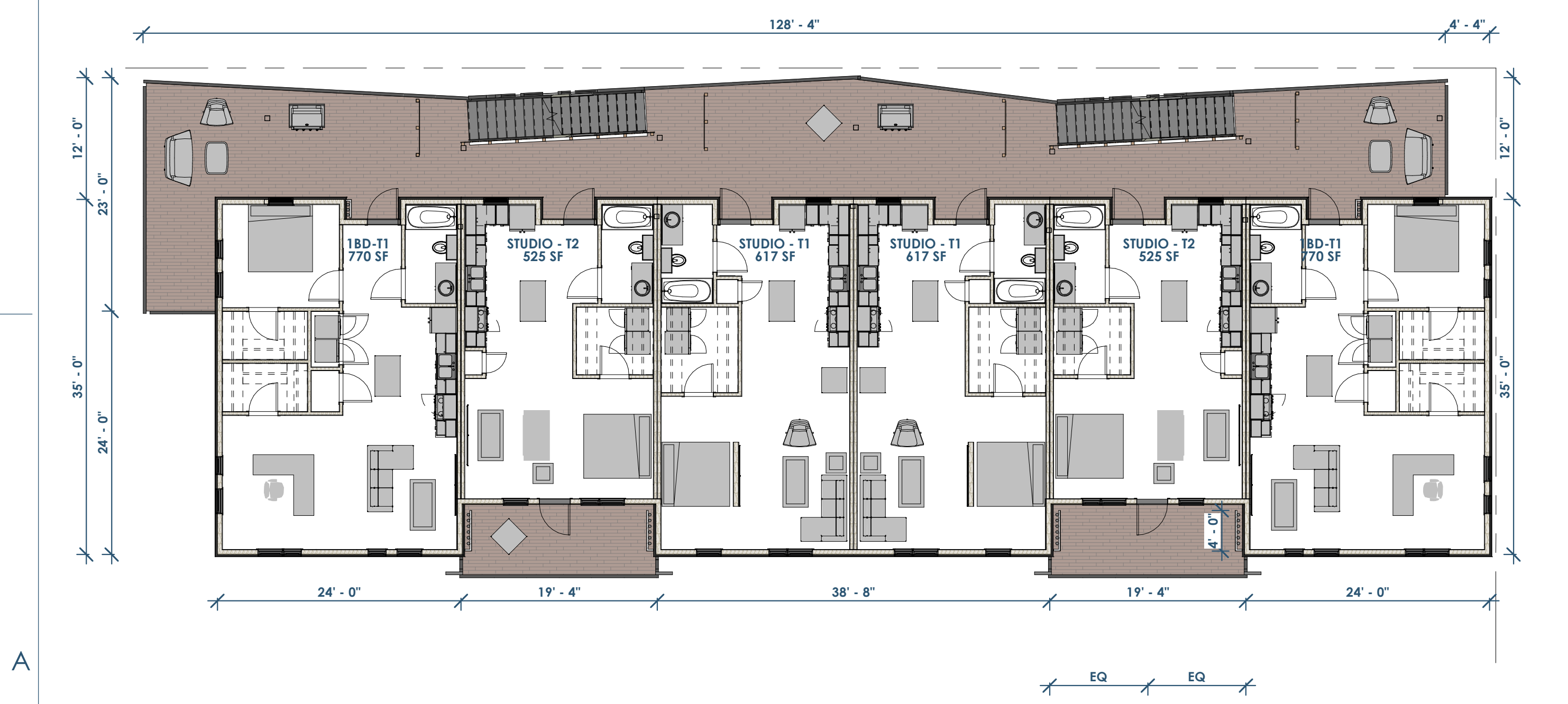


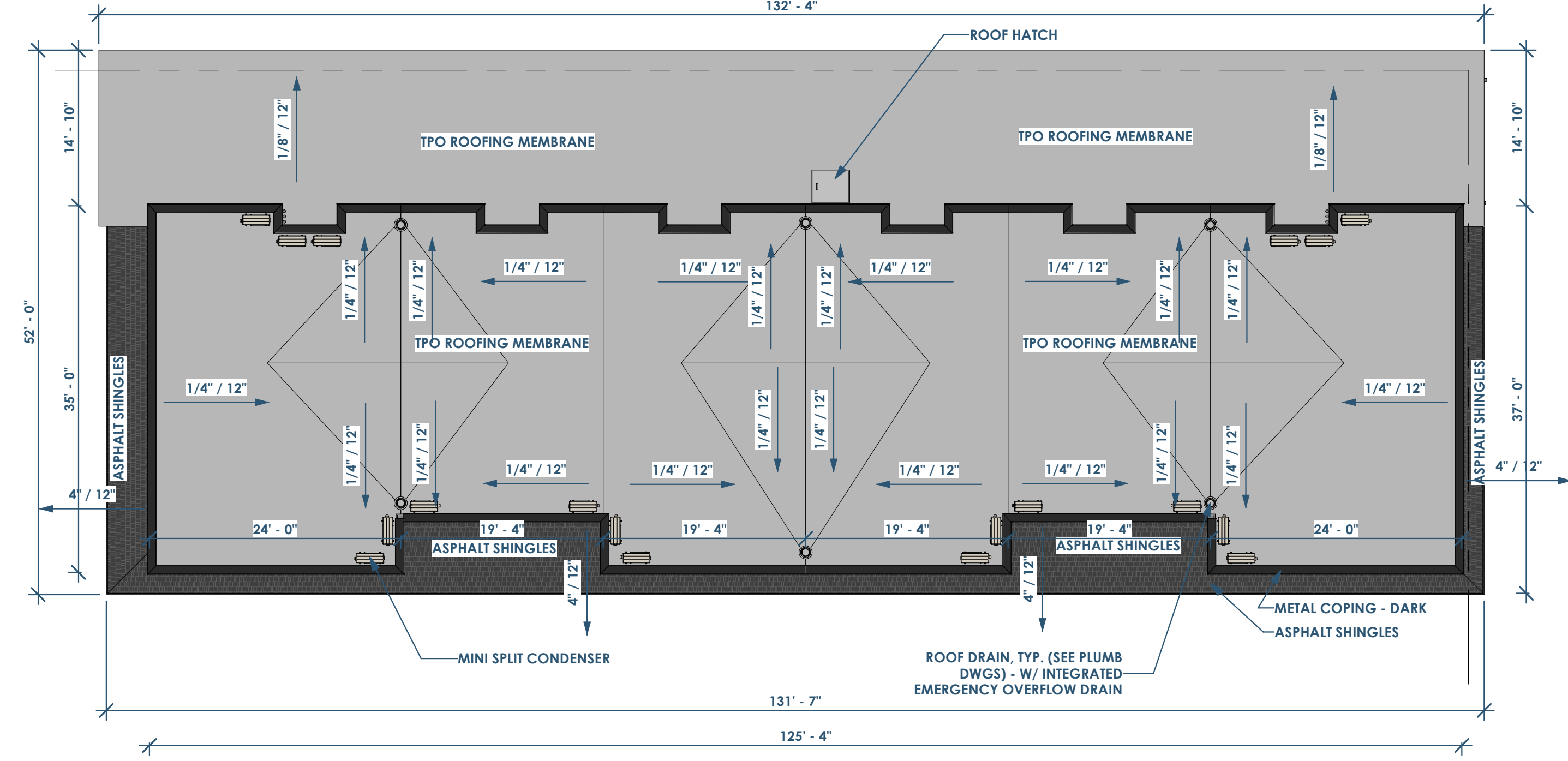
5B
A11 FLOOR PLAN - 1ST
1" = 10'-0"



3B
A11 FLOOR PLAN - 3RD
1" = 10'-0"



5A
A11 FLOOR PLAN - 2ND
1" = 10'-0"



3A
A11 FLOOR PLAN - ROOF
1" = 10'-0"






Owner: Renovation Wranglers
 102 E 26th St
 Bryan, TX 77803
 katieneason@me.com | 979.450.9969

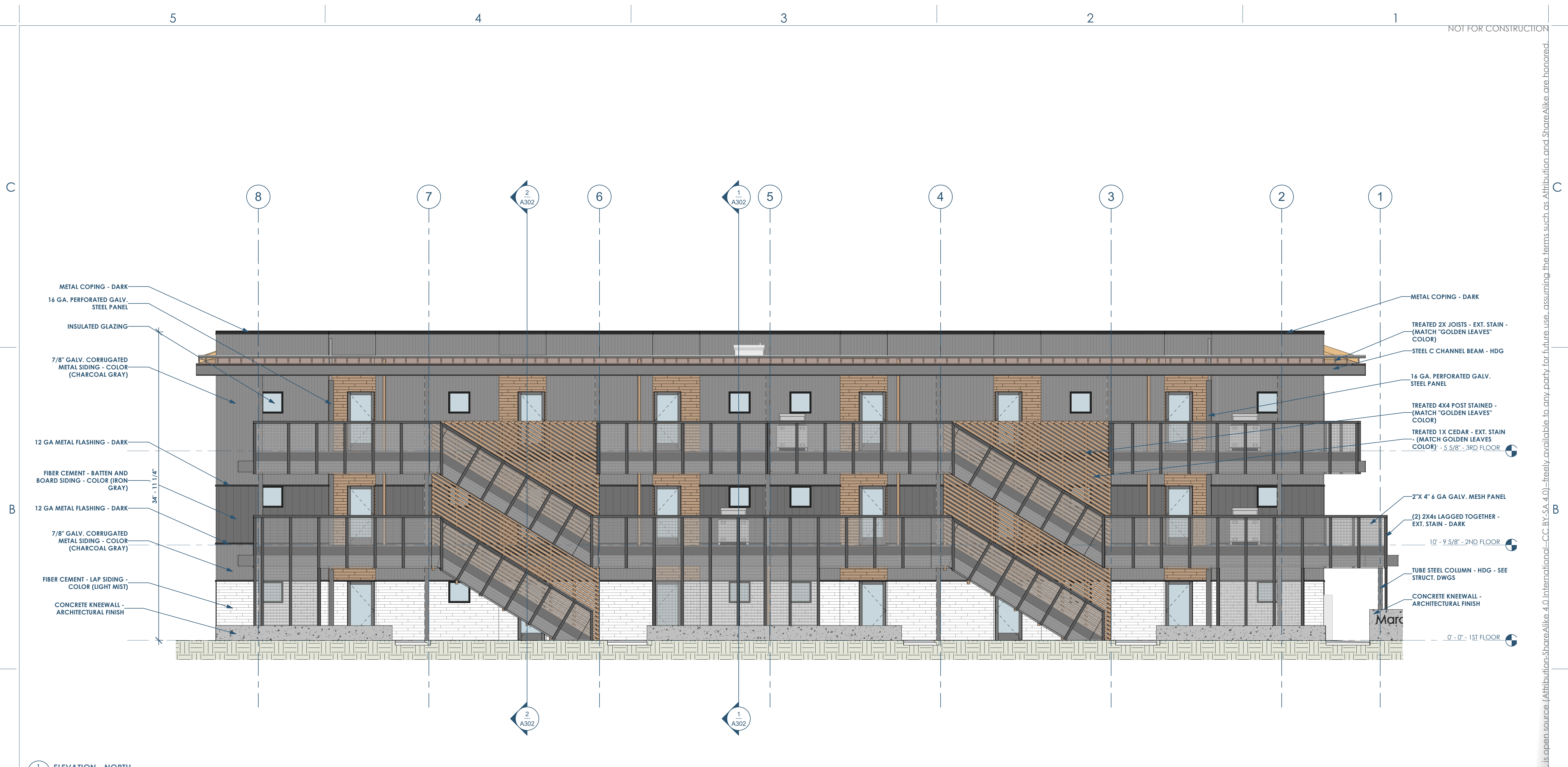
Architect of Record: LKB Architecture
 2929 Allen Pkwy Suite 200
 Houston, TX 77019
 lisa@lkbarchitecture.com | 713.425.3076

Civil: Glenn Jones - J4 Engineering
 1135 N. Earl Rudder Frwy, Suite 100
 Bryan, Texas 77805
 gjones@j4engineering.com | 979.739.0567

Architect: Ryan Schultz - OpeningDesign
 17 S Fairchild St | FL 7
 Madison, WI 53703
 ryan@openingdesign.com | 773.425.6456

FLOOR PLANS - 04.27.2022
 MARCO POLO - 101 W 33RD STREET - CITY OF BRYAN TOWNSITE, BLOCK 96, LOT 3-5 & PT OF 6 & PT OF ALLEY
 BRYAN, TX 77803

This project, like most OpeningDesign's projects, is open source. (Attribution-ShareAlike 4.0 International - CC BY-SA 4.0) - freely available to any party for future use, assuming the terms such as Attribution and ShareAlike are honored.



1 A20 ELEVATION - NORTH
3/16" = 1'-0"



Owner: Renovation Wranglers
102 E 26th St
Bryan, TX 77803
katieneason@me.com | 979.450.9969

Architect of Record: LKB Architecture
2929 Allen Pkwy Suite 200
Houston, TX 77019
lisa@lkbarchitecture.com | 713.425.3076

Civil: Glenn Jones - J4 Engineering
1135 N. Earl Rudder Frwy, Suite 100
Bryan, Texas 77805
gjones@j4engineering.com | 979.739.0567

Architect: Ryan Schultz - Opening Design
17 S Fairchild St | FL 7
Madison, WI 53703
ryan@openingdesign.com | 773.425.6456

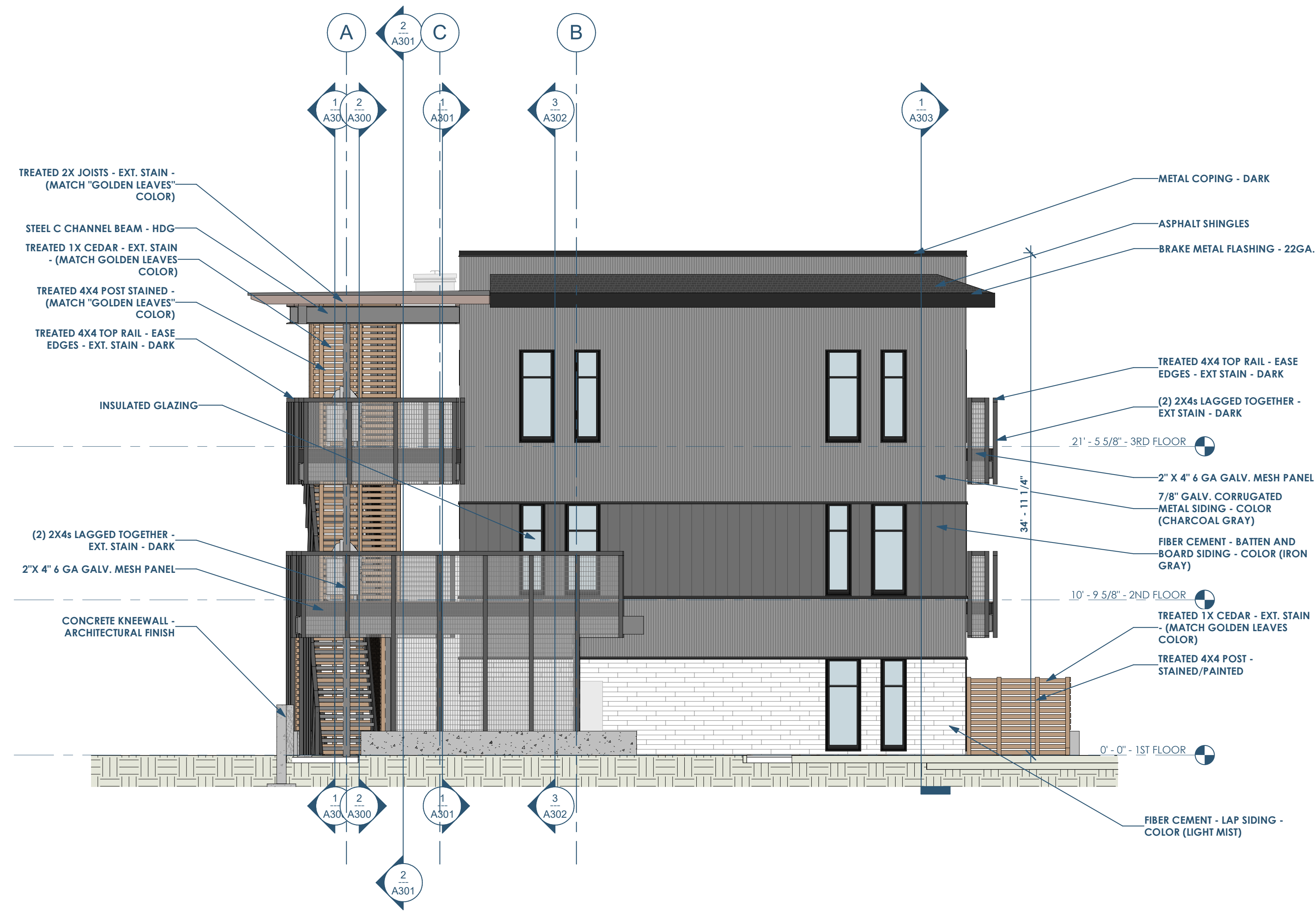
BUILDING ELEVATION - NORTH - 04.27.2022
MARCO POLO - 101 W 33RD STREET - CITY OF BRYAN TOWNSITE, BLOCK 96, LOT 3-5 & PT OF 6 & PT OF ALLEY
BRYAN, TX 77803

This project, like most OpeningDesign's projects, is open source. (Attribution-ShareAlike 4.0 International) - CC BY-SA 4.0 - freely available to any party for future use, assuming the terms such as Attribution and ShareAlike are honored.

C

B

A



1
A21
ELEVATION - WEST
3/16" = 1'-0"



Owner: Renovation Wranglers
102 E 26th St
Bryan, TX 77803
Katieneason@me.com | 979.450.9969

Architect of Record: LKB Architecture
2929 Allen Pkwy Suite 200
Houston, TX 77019
lisa@lkbarchitecture.com | 713.425.3076

Civil: Glenn Jones - J4 Engineering
1135 N. Earl Rudder Frwy, Suite 100
Bryan, Texas 77805
gjones@j4engineering.com | 979.739.0567

Architect: Ryan Schultz - Opening Design
17 S Fairchild St | FL 7
Madison, WI 53703
ryan@openingdesign.com | 773.425.6456

BUILDING ELEVATION - WEST - 04.27.2022
MARCO POLO - 101 W 33RD STREET - CITY OF BRYAN TOWNSITE, BLOCK 96, LOT 3-5 & PT OF 6 & PT OF ALLEY
BRYAN, TX 77803

A21

This project, like most OpeningDesign's projects, is open source. Attribution-ShareAlike 4.0 International - CC BY-SA 4.0 - freely available to any party for future use, assuming the terms such as Attribution and ShareAlike are honored.



1
A22 ELEVATION - SOUTH
3/16" = 1'-0"

 Renovation Wranglers <small>Owner: Renovation Wranglers 102 E 26th St Bryan, TX 77803 katieneason@me.com 979.450.9969</small>	 LKB ARCHITECTURE <small>Architect of Record: LKB Architecture 2929 Allen Pkwy Suite 200 Houston, TX 77019 lisa@lkbarchitecture.com 713.425.3076</small>	 J4E <small>Civil: Glenn Jones - J4 Engineering 1135 N. Earl Rudder Frwy, Suite 100 Bryan, Texas 77805 gjones@j4engineering.com 979.739.0567</small>	 Opening Design <small>Architect: Ryan Schultz - Opening Design 17 S Fairchild St FL 7 Madison, WI 53703 ryan@openingdesign.com 773.425.6456</small>
--	--	--	---

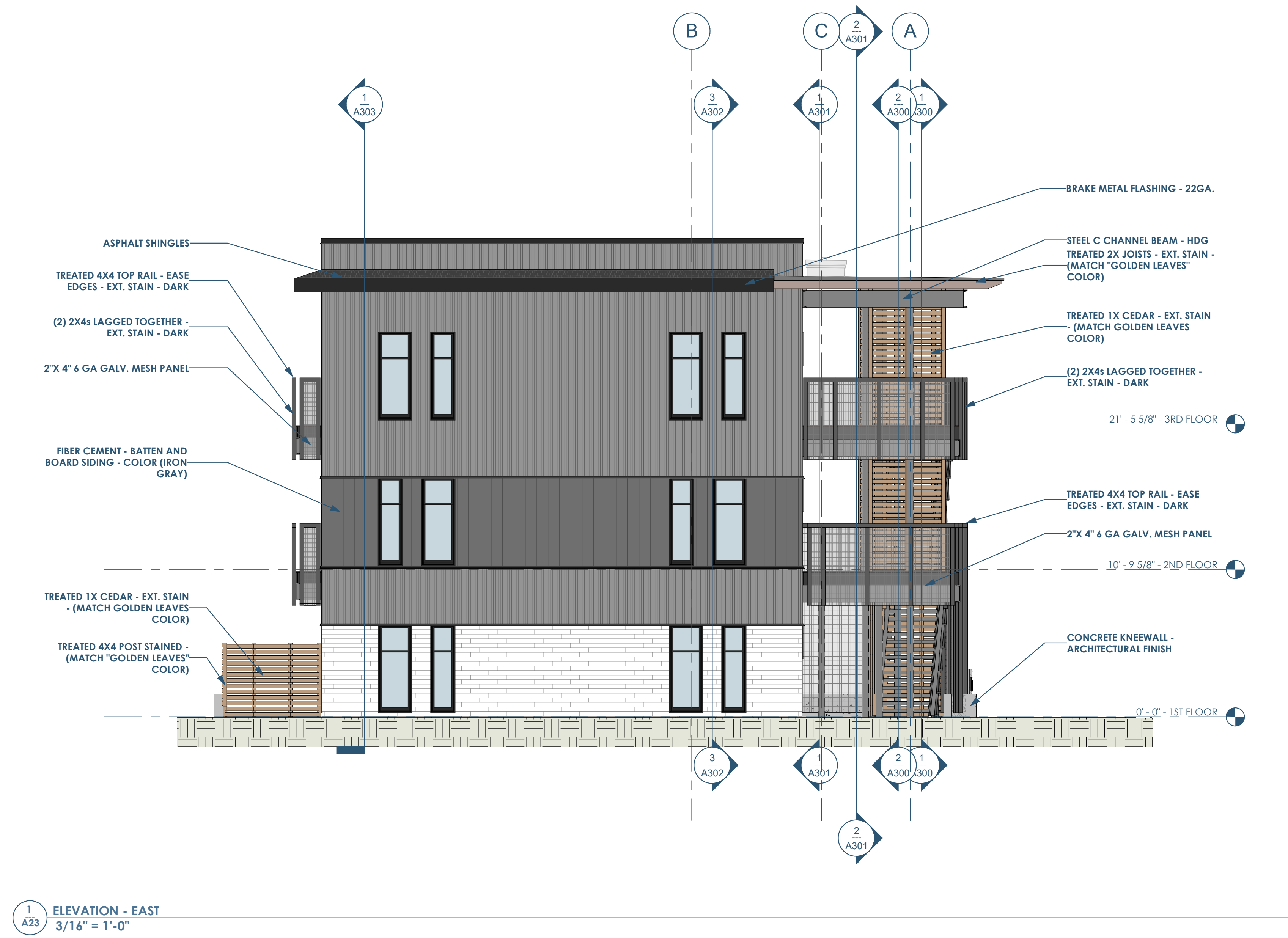
BUILDING ELEVATION - SOUTH - 04.27.2022
 MARCO POLO - 101 W 33RD STREET - CITY OF BRYAN TOWNSITE, BLOCK 96, LOT 3-5 & PT OF 6 & PT OF ALLEY
 BRYAN, TX 77803

This project, like most OpeningDesign's projects, is open source. (Attribution-ShareAlike 4.0 International) - CC BY-SA 4.0 - freely available to any party for future use, assuming the terms such as Attribution and ShareAlike are honored.

C

B

A



Owner: Renovation Wranglers
102 E 26th St
Bryan, TX 77803
Katieneason@me.com | 979.450.9969

Architect of Record: LKB Architecture
2929 Allen Pkwy Suite 200
Houston, TX 77019
lisa@lkbarchitecture.com | 713.425.3076

Civil: Glenn Jones - J4 Engineering
1135 N. Earl Rudder Frwy, Suite 100
Bryan, Texas 77805
gjones@j4engineering.com | 979.739.0567

Architect: Ryan Schultz - Opening Design
17 S Fairchild St | FL 7
Madison, WI 53703
ryan@openingdesign.com | 773.425.6456

BUILDING ELEVATION - EAST - 04.27.2022
MARCO POLO - 101 W 33RD STREET - CITY OF BRYAN TOWNSITE, BLOCK 96, LOT 3-5 & PT OF 6 & PT OF ALLEY
BRYAN, TX 77803

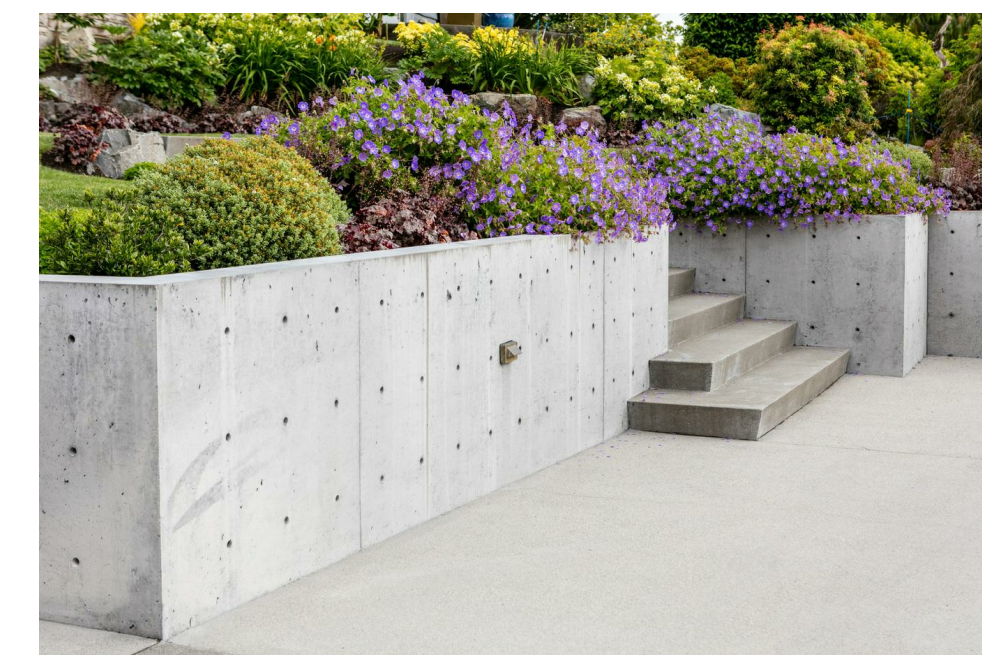
A23

This project, like most Opening Design's projects, is open source. (Attribution-ShareAlike 4.0 International) - CC BY-SA 4.0 - freely available to any party for future use, assuming the terms such as Attribution and ShareAlike are honored.

FACADE MATERIAL TAKE OFF	
MATERIAL NAME	AREA
2" X 4" 6 GA GALV. MESH PANEL	108 SF
7/8" GALV. CORRUGATED METAL SIDING - COLOR (CHARCOAL GRAY)	627 SF
FIBER CEMENT - BATTEN AND BOARD SIDING - COLOR (IRON GRAY)	177 SF
FIBER CEMENT - LAP SIDING - COLOR (LIGHT MIST)	185 SF
INSULATED GLAZING	228 SF
FACADE - EAST	1325 SF
2" X 4" 6 GA GALV. MESH PANEL	1245 SF
7/8" GALV. CORRUGATED METAL SIDING - COLOR (CHARCOAL GRAY)	2994 SF
FIBER CEMENT - BATTEN AND BOARD SIDING - COLOR (IRON GRAY)	729 SF
FIBER CEMENT - LAP SIDING - COLOR (GOLDEN LEAVES)	626 SF
FIBER CEMENT - LAP SIDING - COLOR (LIGHT MIST)	861 SF
INSULATED GLAZING	163 SF
TREATED 1X CEDAR - EXT. STAIN - (MATCH GOLDEN LEAVES COLOR)	414 SF
FACADE - NORTH	7031 SF
2" X 4" 6 GA GALV. MESH PANEL	440 SF
7/8" GALV. CORRUGATED METAL SIDING - COLOR (CHARCOAL GRAY)	2600 SF
FIBER CEMENT - BATTEN AND BOARD SIDING - COLOR (IRON GRAY)	495 SF
FIBER CEMENT - LAP SIDING - COLOR (GOLDEN LEAVES)	757 SF
FIBER CEMENT - LAP SIDING - COLOR (LIGHT MIST)	631 SF
INSULATED GLAZING	1128 SF
TREATED 1X CEDAR - EXT. STAIN - (MATCH GOLDEN LEAVES COLOR)	430 SF
FACADE - SOUTH	6481 SF
2" X 4" 6 GA GALV. MESH PANEL	298 SF
7/8" GALV. CORRUGATED METAL SIDING - COLOR (CHARCOAL GRAY)	765 SF
FIBER CEMENT - BATTEN AND BOARD SIDING - COLOR (IRON GRAY)	170 SF
FIBER CEMENT - LAP SIDING - COLOR (LIGHT MIST)	205 SF
INSULATED GLAZING	190 SF
FACADE - WEST	1629 SF



2" X 4" 6GA. GALV. MESH PANEL



CONCRETE WALL - ARCHITECTURE FINISH



IRON GRAY



CHARCOAL GRAY



HOT DIPPED GALVANIZED STEEL



COLOR: LIGHT MIST



COLOR: GOLDEN LEAVES



Owner: Renovation Wranglers
102 E 26th St
Bryan, TX 77803
katieneason@me.com | 979.450.9969



Architect of Record: LKB Architecture
2929 Allen Pkwy Suite 200
Houston, TX 77019
lisa@lkbarchitecture.com | 713.425.3076



Civil: Glenn Jones - J4 Engineering
1135 N. Earl Rudder Frwy, Suite 100
Bryan, Texas 77805
gjones@j4engineering.com | 979.739.0567



Architect: Ryan Schultz - Opening Design
17 S Fairchild St | FL 7
Madison, WI 53703
ryan@openingdesign.com | 773.425.6456

SCHEDULES & COLORS - 04.27.2022
MARCO POLO - 101 W 33RD STREET - CITY OF BRYAN TOWNSITE, BLOCK 96, LOT 3-5 & PT OF 6 & PT OF ALLEY
BRYAN, TX 77803

This project, like most OpeningDesign's projects, is open source. (Attribution-ShareAlike 4.0 International) CC BY-SA 4.0 - freely available to any party for future use, assuming the terms such as Attribution and ShareAlike are honored.

C



B



A



Owner: Renovation Wranglers
102 E 26th St
Bryan, TX 77803
katieneason@me.com | 979.450.9969



Architect of Record: LKB Architecture
2929 Allen Pkwy Suite 200
Houston, TX 77019
lisa@lkbarchitecture.com | 713.425.3076



Civil: Glenn Jones - J4 Engineering
1135 N. Earl Rudder Frwy, Suite 100
Bryan, Texas 77805
gjones@j4engineering.com | 979.739.0567



Architect: Ryan Schultz - Opening Design
17 S Fairchild St | FL 7
Madison, WI 53703
ryan@openingdesign.com | 773.425.6456

RENDERINGS - 04.27.2022
MARCO POLO - 101 W 33RD STREET - CITY OF BRYAN TOWNSITE, BLOCK 96, LOT 3-5 & PT OF 6 & PT OF ALLEY
BRYAN, TX 77803

A90

This project, like most Opening Design's projects, is open source. (Attribution-ShareAlike 4.0 International--CC BY-SA 4.0)--freely available to any party for future use, assuming the terms such as Attribution and ShareAlike are honored.