



- 2X LOAD BEARING STUD WALL
- PREFAB TRUSSES
- STEEL DROP BEAM
- 2X JOIST
- GLULAM DROP BEAM
- STEEL COLUMN

1 OK'z FLOOR PLAN - 2ND
3/16" = 1'-0"



Owner: Renovation Wranglers
102 E 26th St
Bryan, TX 77803
katieneason@me.com | 979.450.9969

Architect of Record: LKB Architecture
2929 Allen Pkwy Suite 200
Houston, TX 77019
lisa@lkbarchitecture.com | 713.425.3076

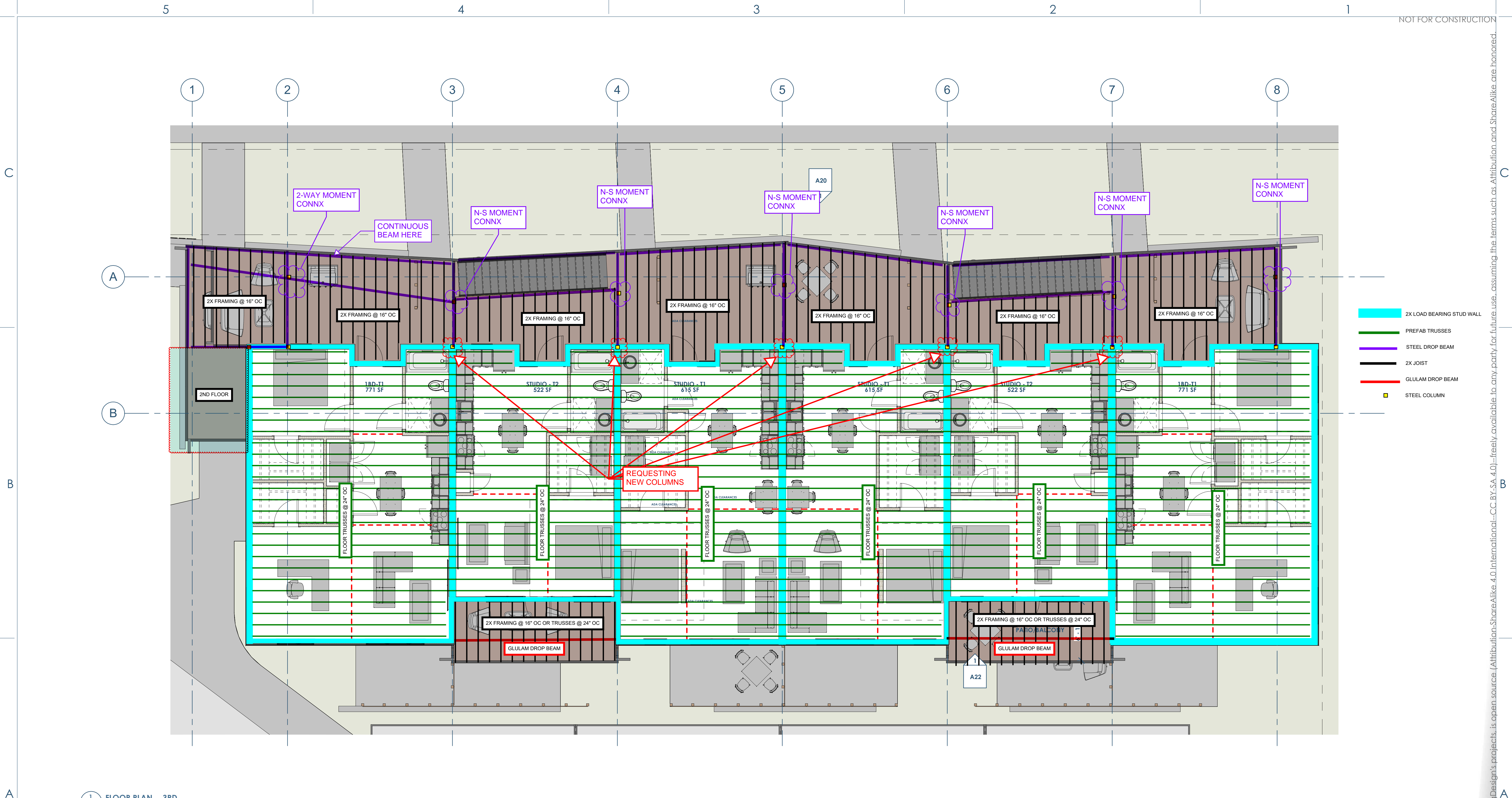
Civil: Glenn Jones - J4 Engineering
1135 N. Earl Rudder Frwy, Suite 100
Bryan, Texas 77805
gjones@j4engineering.com | 979.739.0567

Architect: Ryan Schultz - OpeningDesign
17 S Fairchild St | FL 7
Madison, WI 53703
ryan@openingdesign.com | 773.425.6456

2ND FLOOR PLAN - 03.17.2022
MARCO POLO - 101 W 33RD STREET
BRYAN, TX 77803



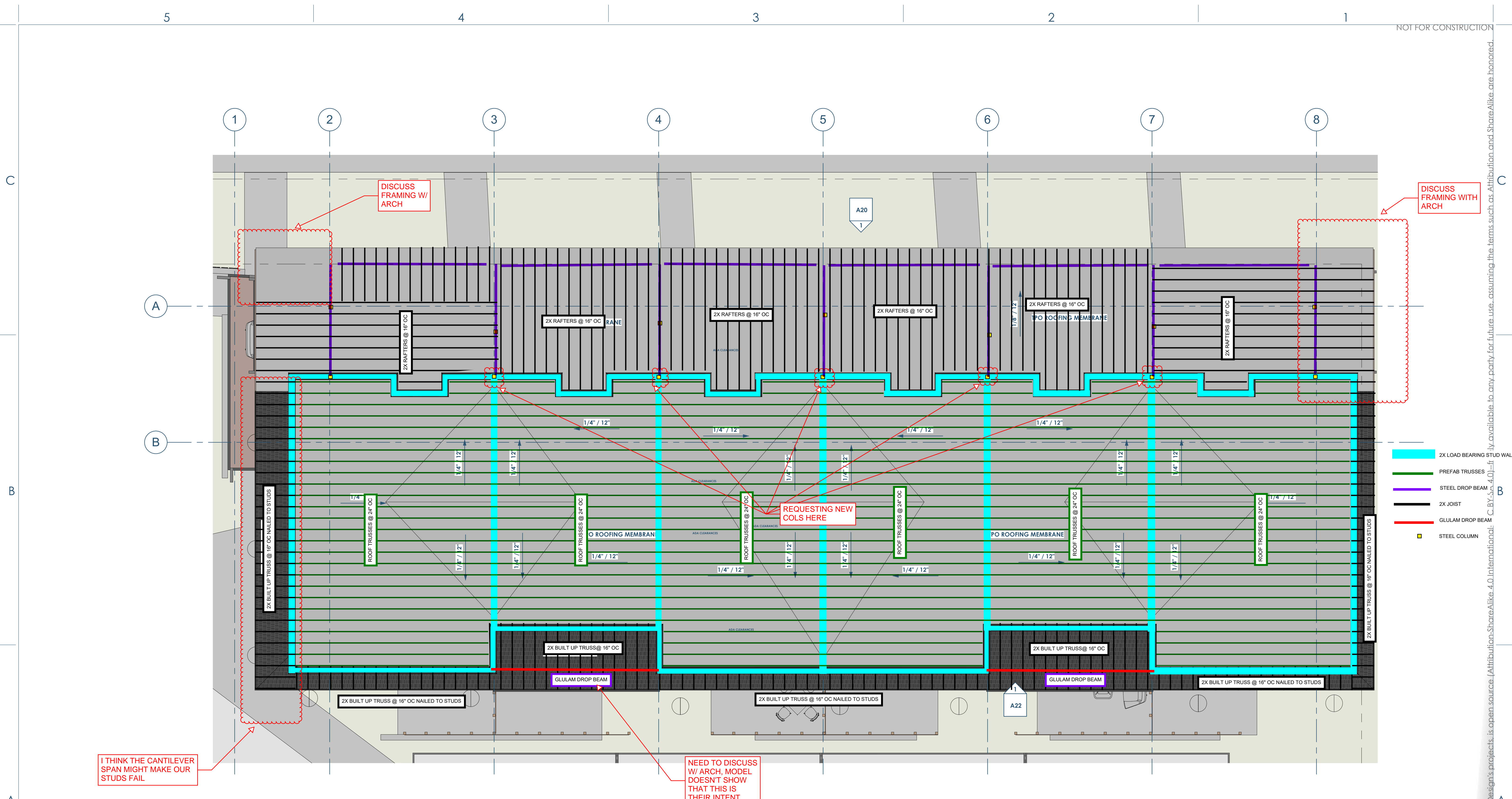
This project, like most OpeningDesign's projects, is open source. (Attribution-ShareAlike 4.0 International - CC BY-SA 4.0) - freely available to any party for future use, assuming the terms such as Attribution and ShareAlike are honored.



- 2X LOAD BEARING STUD WALL
- PREFAB TRUSSES
- STEEL DROP BEAM
- 2X JOIST
- GLULAM DROP BEAM
- STEEL COLUMN

1
OKE3
FLOOR PLAN - 3RD
3/16" = 1'-0"

This project, like most OpeningDesign's projects, is open source. (Attribution-ShareAlike 4.0 International - CC BY-SA 4.0) - freely available to any party for future use, assuming the terms such as Attribution and ShareAlike are honored.



I THINK THE CANTILEVER SPAN MIGHT MAKE OUR STUDS FAIL

DISCUSS FRAMING W/ ARCH

DISCUSS FRAMING WITH ARCH

REQUESTING NEW COLS HERE

NEED TO DISCUSS W/ ARCH, MODEL DOESN'T SHOW THAT THIS IS THEIR INTENT

1 FLOOR PLAN - ROOF Copy 1
 OKE4 3/16" = 1'-0"

- █ 2X LOAD BEARING STUD WALL
- █ PREFAB TRUSSES
- █ STEEL DROP BEAM
- █ 2X JOIST
- █ GLULAM DROP BEAM
- █ STEEL COLUMN



Owner: Renovation Wranglers
 102 E 26th St
 Bryan, TX 77803
 katieneason@me.com | 979.450.9969

Architect of Record: LKB Architecture
 2929 Allen Pkwy Suite 200
 Houston, TX 77019
 lisa@lkbarchitecture.com | 713.425.3076

Civil: Glenn Jones - J4 Engineering
 1135 N. Earl Rudder Frwy, Suite 100
 Bryan, Texas 77805
 gjones@j4engineering.com | 979.739.0567

Architect: Ryan Schultz - OpeningDesign
 17 S Fairchild St | FL 7
 Madison, WI 53703
 ryan@openingdesign.com | 773.425.6456

ROOF FRAMING PLAN - 03.17.2022
 MARCO POLO - 101 W 33RD STREET
 BRYAN, TX 77803



This project, like most OpeningDesign's projects, is open source. (Attribution-ShareAlike 4.0 International). It is available to any party for future use, assuming the terms such as Attribution and ShareAlike are honored.