



**RENOVATION**  
Wranglers  
Engineers

Owner: Renovation Wranglers  
102 E 26th St  
Bryan, TX 77803  
Kateneason@wrangler.com | 979.450.9969

**ARCHITECTURE**  
Architect of Record: LKB Architecture  
2929 Allen Pkwy Suite 200  
Houston, TX 77019  
isa@lkbarchitecture.com | 713.425.3076

**DUDLEY**

Structural: Dudley  
6102 Imperial Loop Drive  
College Station, TX 77845  
(979) 777-0720

**amc**  
ENGINEERS

MEP: AMC Engineers  
508 E Jackson St # 552  
Burnet, TX 78611  
info@amcengineers.com

This project, like most OpeningDesign's projects, is open source (Attribution-ShareAlike 4.0 International-CC BY-SA 4.0)-freely available to any party for future use, assuming the terms such as Attribution and ShareAlike are honored.



**01 - FLOOR PLAN - 2ND FLOOR**  
1/4" = 1'-0"

**openingdesign**

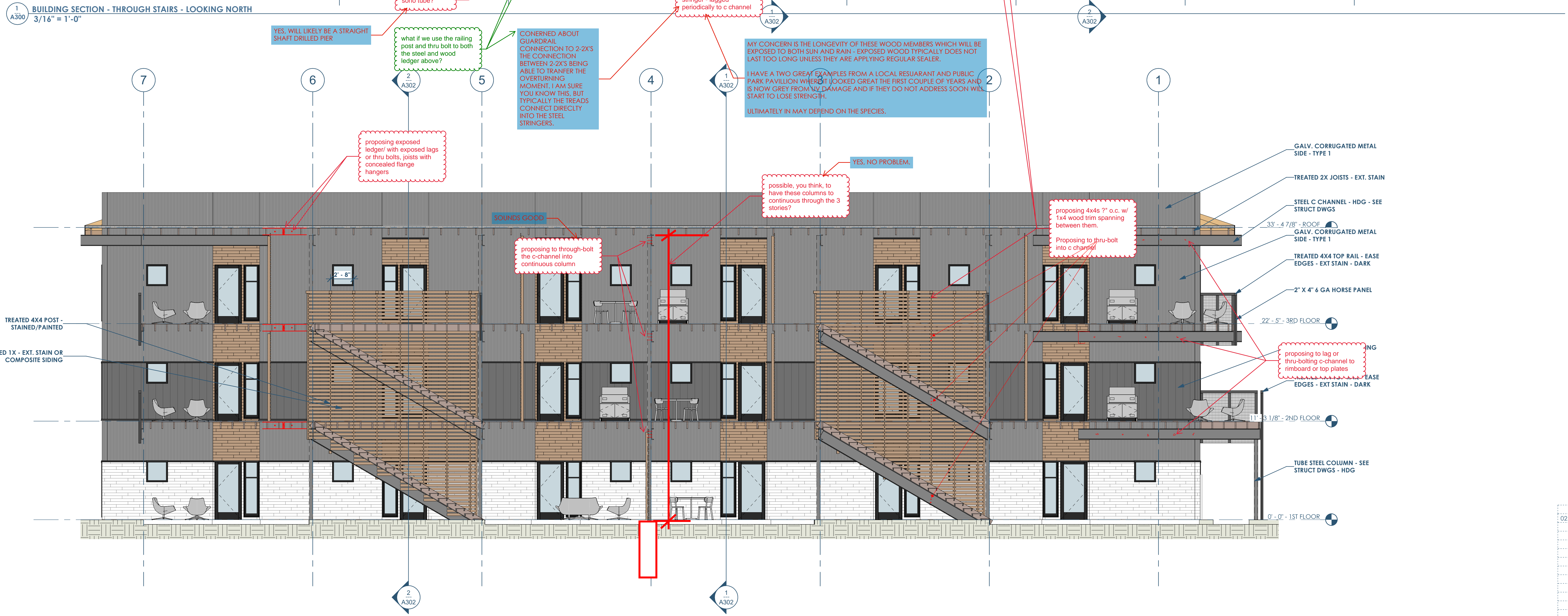
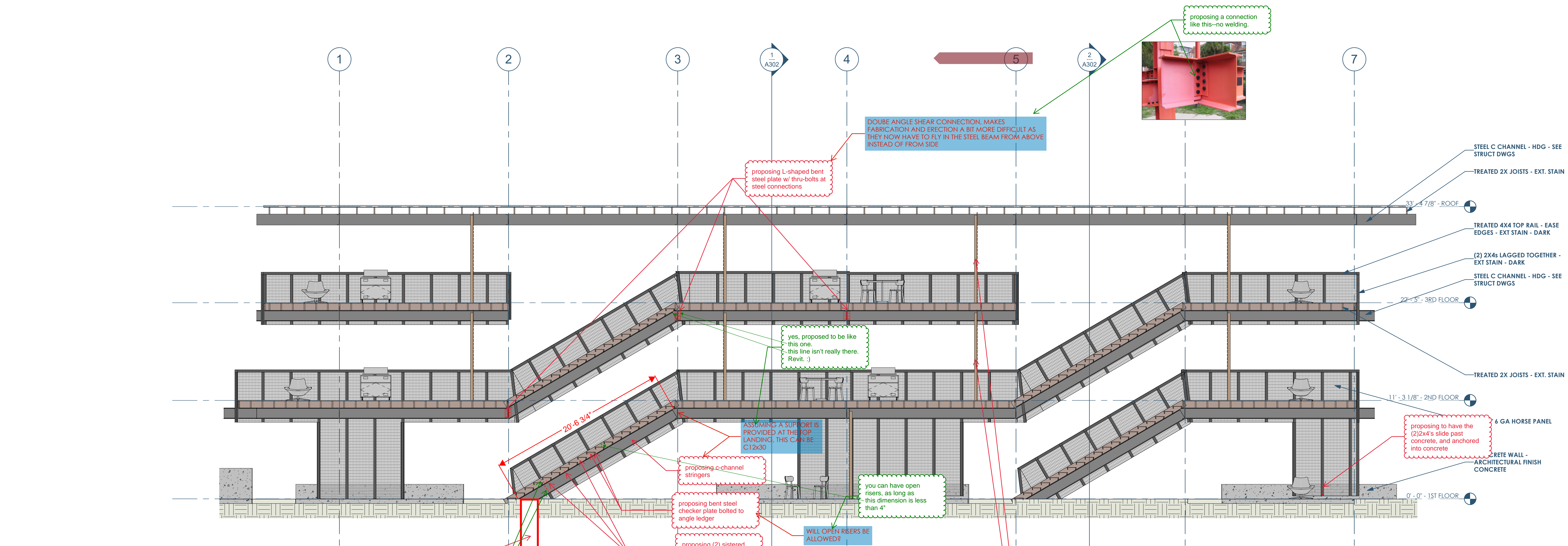
Architect: OpeningDesign  
17 S Fairchild | FL 7  
Madison, WI 53703  
ryan@openingdesign.com | 773.425.6456

Date	Description
02.22.2022	Progress DD Set









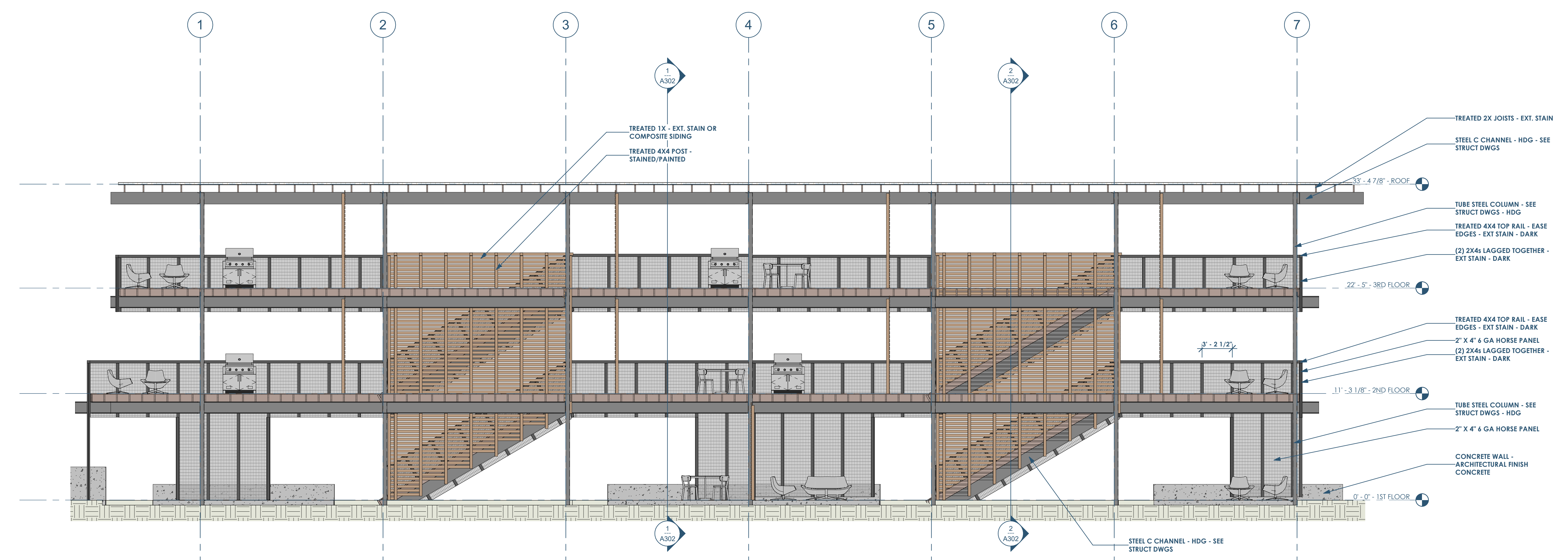
This project, like most OpeningDesign's projects, is open source. (Attribution-ShareAlike 4.0 International-CC BY-SA 4.0) -freely available to any party for future use, assuming the terms such as Attribution and ShareAlike are honored.

Date	Description
02.22.2022	Progress DD Set

This project, like most OpeningDesign's projects, is open source. (Attribution-ShareAlike 4.0 International-CC BY-SA 4.0)-freely available to any party for future use, assuming the terms such as Attribution and ShareAlike are honored.

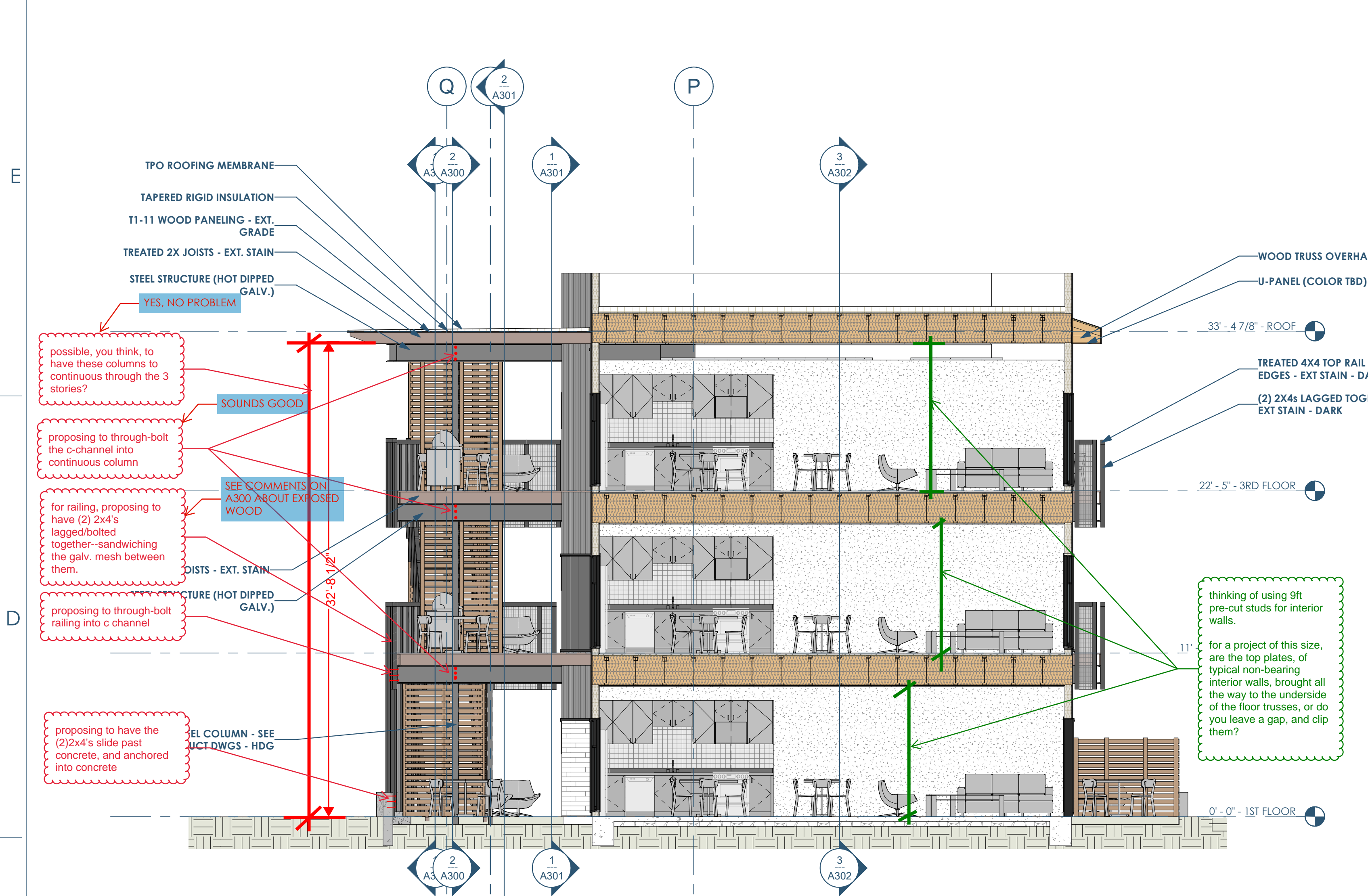


1 A301 BUILDING SECTION - THRU BALCONY - LOOKING SOUTH  
3/16" = 1'-0"

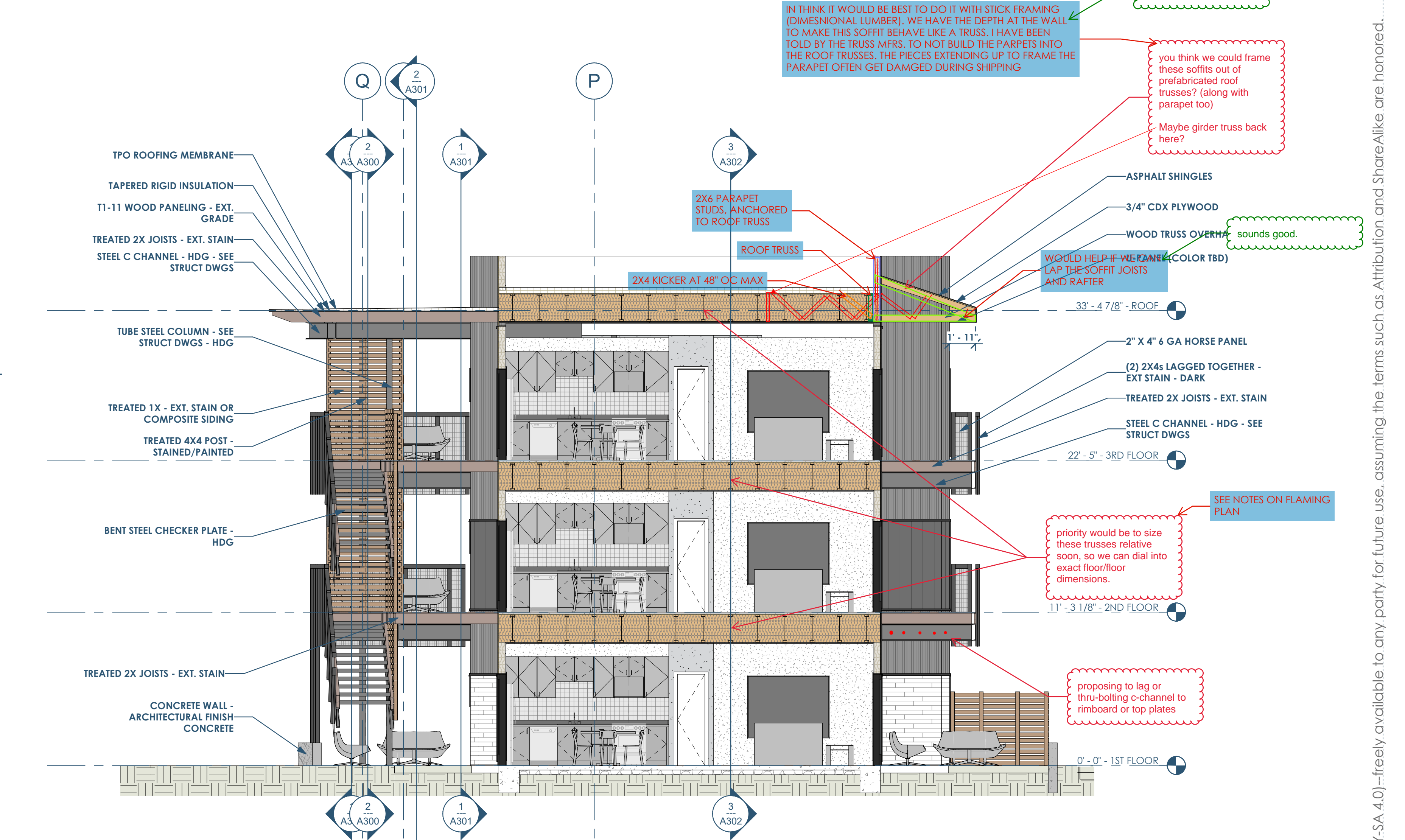


2 A301 BUILDING SECTION - THRU BALCONY - LOOKING NORTH  
3/16" = 1'-0"

Date	Description
02.22.2022	Progress DD Set



1 BUILDING SECTION - THRU LARGE STUDIO - LOOKING EAST  
3/16" = 1'-0"



2 BUILDING SECTION - THRU SMALL STUDIO - LOOKING EAST  
3/16" = 1'-0"



3 BUILDING SECTION - EAST/WEST - LOOKING SOUTH  
3/16" = 1'-0"

possible, you think, to have these columns to continuous through the 3 stories?  
SOUNDS GOOD

proposing to through-bolt the c-channel into continuous column

for railing, proposing to have (2) 2x4's lagged together - sandwiching the galv. mesh between them.

proposing to through-bolt railing into c channel

SEE COMMENTS ON A300 ABOUT EXPOSED WOOD

thinking of using 9ft pre-cut studs for interior walls.

for a project of this size, are the top plates, of typical non-bearing interior walls, brought all the way to the underside of the floor trusses, or do you leave a gap, and clip them?

YES, NO PROBLEM

SEE COMMENTS ON A300 ABOUT EXPOSED WOOD

proposing to have the (2) 2x4's slide past concrete, and anchored into concrete

SEE NOTES ON FLAMING PLAN

proposing to lag or thru-bolting c-channel to rimbard or top plates

is proposed so we can carry drywall all the way up to the deck, for acoustical and fire separation reasons.

IN THINK IT WOULD BE BEST TO DO IT WITH STICK FRAMING (DIMENSIONAL LUMBER). WE HAVE THE DEPTH AT THE WALL TO MAKE THIS SOFFIT BEHAVE LIKE A TRUSS. I HAVE BEEN TOLD BY THE TRUSS MFRS. TO NOT BUILD THE PARAPETS INTO THE ROOF TRUSSES. THE PIECES EXTENDING UP TO FRAME THE PARAPET OFTEN GET DAMAGED DURING SHIPPING

sounds good.

you think we could frame these soffits out of prefabricated roof trusses? (along with parapet too)  
Maybe girder truss back here?

sounds good.

WORLD HELP IF WE FRAME (COLOR TBD) LAP THE SOFFIT JOISTS AND RAFTER

2X4 KICKER AT 48" OC MAX

2X4 PARAPET STUDS, ANCHORED TO ROOF TRUSS

ROOF TRUSS

2" X 4" & 6" HORSE PANEL

(2) 2X4s LAGGED TOGETHER - EXT STAIN - DARK

TREATED 2X JOISTS - EXT. STAIN

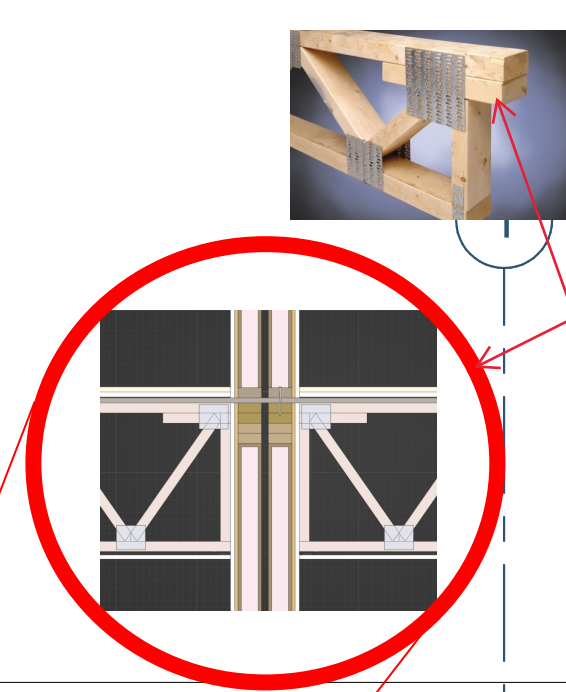
STEEL C CHANNEL - HDG - SEE STRUCT DWGS

priority would be to size these trusses relative soon, so we can dial into exact floor/floor dimensions.

SEE NOTES ON FLAMING PLAN

proposing to lag or thru-bolting c-channel to rimbard or top plates

is proposed so we can carry drywall all the way up to the deck, for acoustical and fire separation reasons.



WE HAVE DONE THIS BEFORE. IT HELPS REDUCE THE OVERALL WOOD SHRINKAGE IN THE BUILDING.

FRAMERS DONT TYPICALLY LIKE IT AND NOT TYPICAL IN OUR AREA BECAUSE IT MAKES THEM BUILD THE WALL ABOVE THE TYPICAL PLATE HEIGHT

proposing top-loading trusses... thoughts?

This project, like most OpeningDesign's projects, is open source. (Attribution-ShareAlike 4.0 Int'l)

**RENOVATION Wranglers**  
Owner: Renovation Wranglers  
102 E 26th St  
Bryan, TX 77803  
Kateneason@time.com | 979.450.9969

**ARCHITECTURE**  
Architect of Record: LKB Architecture  
2929 Allen Pkwy Suite 200  
Houston, TX 77019  
isa@lkbarchitecture.com | 713.425.3076

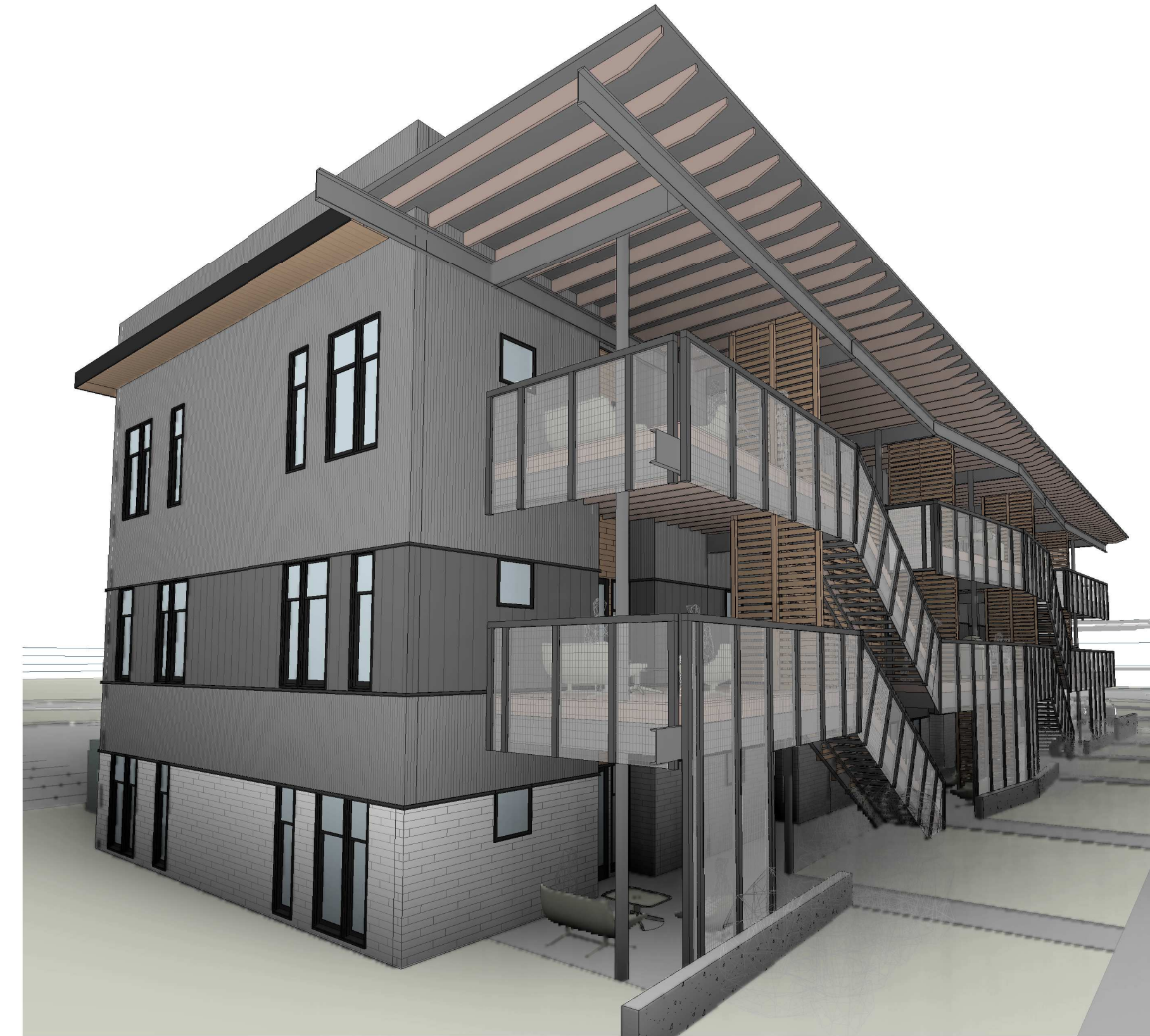
**DUDDLEY**  
Structural: Dudley  
4102 Imperial Loop Drive  
College Station, TX 77845  
(979) 777-0720

**amc ENGINEERS**  
MEP: AMC Engineers  
508 E Jackson St # 552  
Burnet, TX 78611  
info@amcengineers.com

**openingdesign**  
Architect: OpeningDesign  
17 S Fairchild | FL 7  
Madison, WI 53703  
ryan@openingdesign.com | 773.425.6456

Date	Description
02.22.2022	Progress DD Set





Owner: Renovation Wranglers  
102 E 26th St  
Bryan, TX 77803  
Kateneason@time.com | 979.450.9969



ARCHITECTURE  
Architect of Record: LKB Architecture  
2929 Allen Pkwy Suite 200  
Houston, TX 77019  
isa@lkbarchitecture.com | 713.425.3076



**DUDLEY**  
Structural: Dudley  
6102 Imperial Loop Drive  
College Station, TX 77845  
(979) 777-0720



MEP: AMC Engineers  
508 E Jackson St # 552  
Burnet, TX 78611  
info@amcengineers.com

This project, like most OpeningDesign's projects, is open source (Attribution-ShareAlike 4.0 International-CC BY-SA 4.0)-freely available to any party for future use, assuming the terms such as Attribution and ShareAlike are honored.



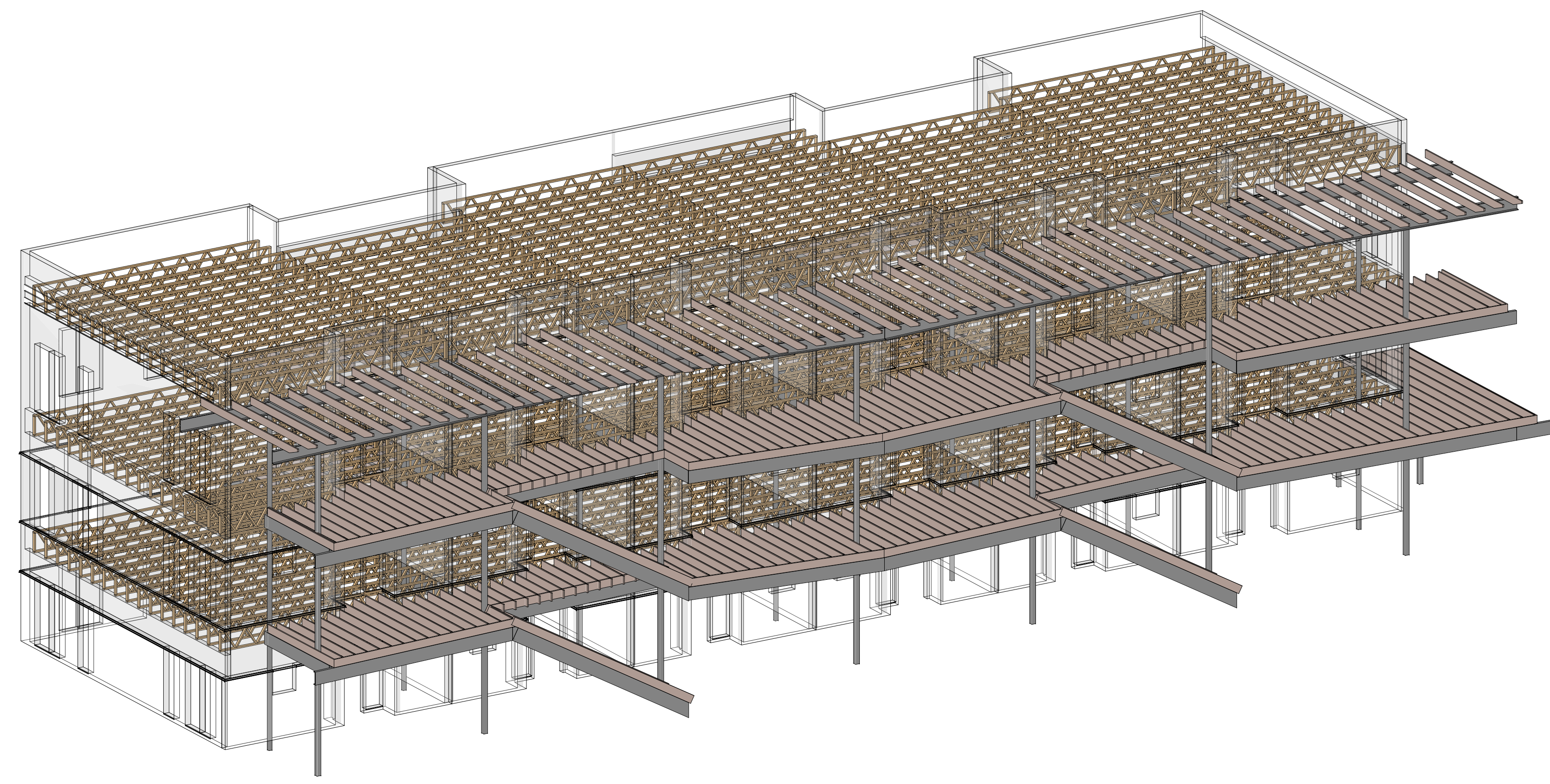
Architect: OpeningDesign  
17 S Fairchild | FL 7  
Madison, WI 53703  
ryan@openingdesign.com | 773.425.6456

Date	Description
02.22.2022	Progress DD Set

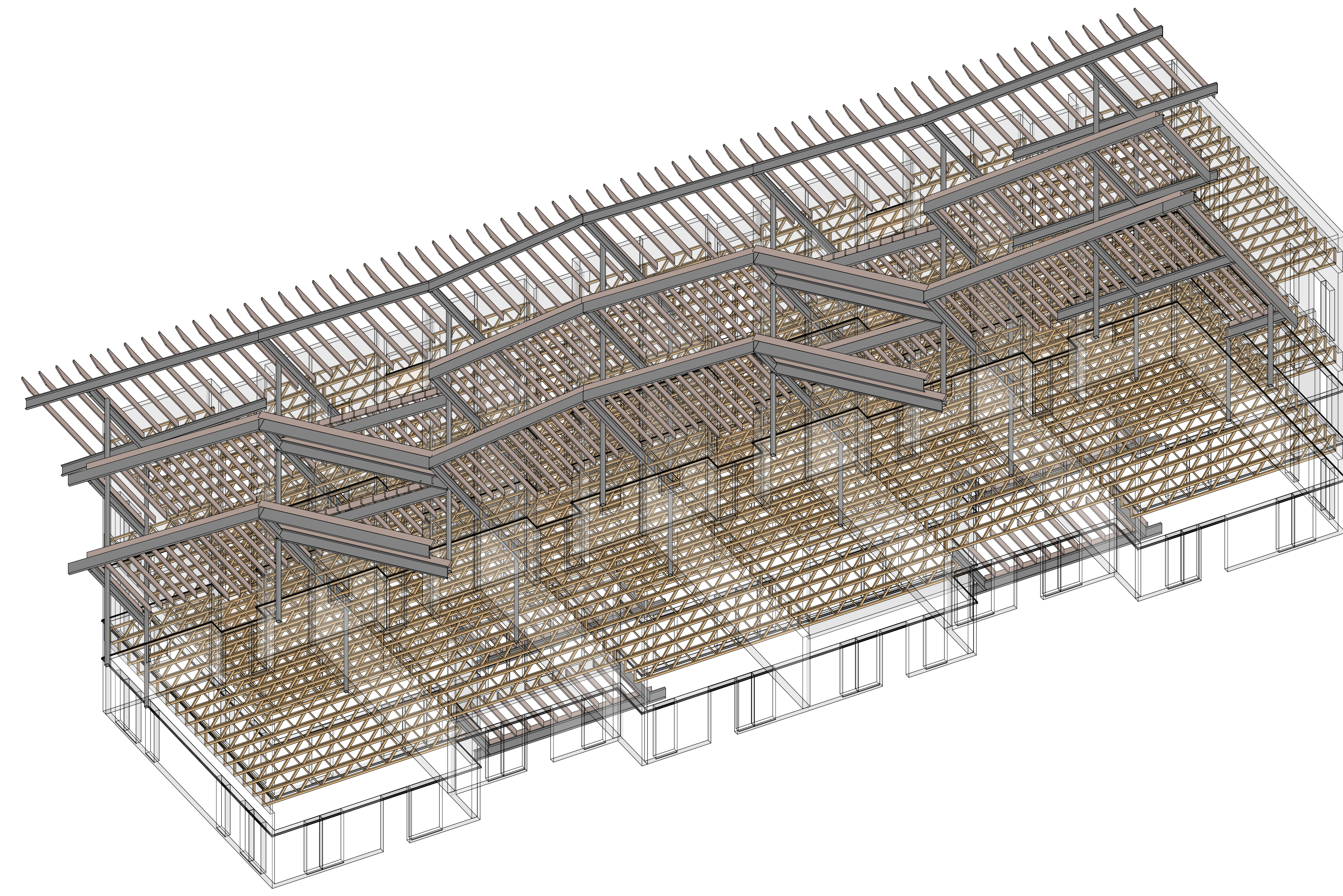








1 STRUCTURAL FRAMING - 3D - 1  
S900



2 STRUCTURAL FRAMING - 3D - 2  
S900

Owner: Renovation Wranglers  
102 E 26th St  
Bryan, TX 77803  
kate@renovationwranglers.com | 979.450.9969

ARCHITECTURE  
Architect of Record: LKB Architecture  
2929 Allen Pkwy Suite 200  
Houston, TX 77019  
isa@lkbarchitecture.com | 713.425.3076

STRUCTURAL: DUDLEY  
6102 Imperial Loop Drive  
College Station, TX 77845  
(979) 777-0720

MEP: AMC ENGINEERS  
508 E Jackson St # 552  
Burnet, TX 78611  
info@amcengineers.com

This project, like most OpeningDesign's projects, is open source (Attribution-ShareAlike 4.0 International-CC BY-SA 4.0)-freely available to any party for future use, assuming the terms such as Attribution and ShareAlike are honored.

openingdesign  
Architect: OpeningDesign  
17 S Fairchild | FL 7  
Madison, WI 53703  
ryan@openingdesign.com | 773.425.6456

Date	Description
02.22.2022	Progress DD Set