

RENOVATION
Wranglers
Engineers

Owner: Renovation Wranglers
102 E 26th St
Bryan, TX 77803
Kateneason@rwe.com | 979.450.9969

LKB
ARCHITECTURE

Architect of Record: LKB Architecture
2929 Allen Pkwy Suite 200
Houston, TX 77019
isa@lkbarchitecture.com | 713.425.3076

DUDLEY

Structural: Dudley
6102 Imperial Loop Drive
College Station, TX 77845
(979) 777-0720

amc
ENGINEERS

MEP: AMC Engineers
508 E Jackson St # 552
Burnet, TX 78611
info@amcengineers.com

This project, like most OpeningDesign's projects, is open source (Attribution-ShareAlike 4.0 International-CC BY-SA 4.0)-freely available to any party for future use, assuming the terms such as Attribution and ShareAlike are honored.



1
A102
O1 - FLOOR PLAN - 2ND FLOOR
1/4" = 1'-0"

openingdesign

Architect: OpeningDesign
17 S Fairchild | FL 7
Madison, WI 53703
ryan@openingdesign.com | 773.425.6456

Date	Description
02/22/2022	Progress DD Set

RENOVATION
Wranglers
ENGINEERS
Owner: Renovation Wranglers
102 E 26th St
Bryan, TX 77803
kate@renovations.com | 979.450.9969

ARCHITECTURE
Architect of Record: LKB Architecture
2929 Allen Pkwy Suite 200
Houston, TX 77019
isa@lkbarchitecture.com | 713.425.3076

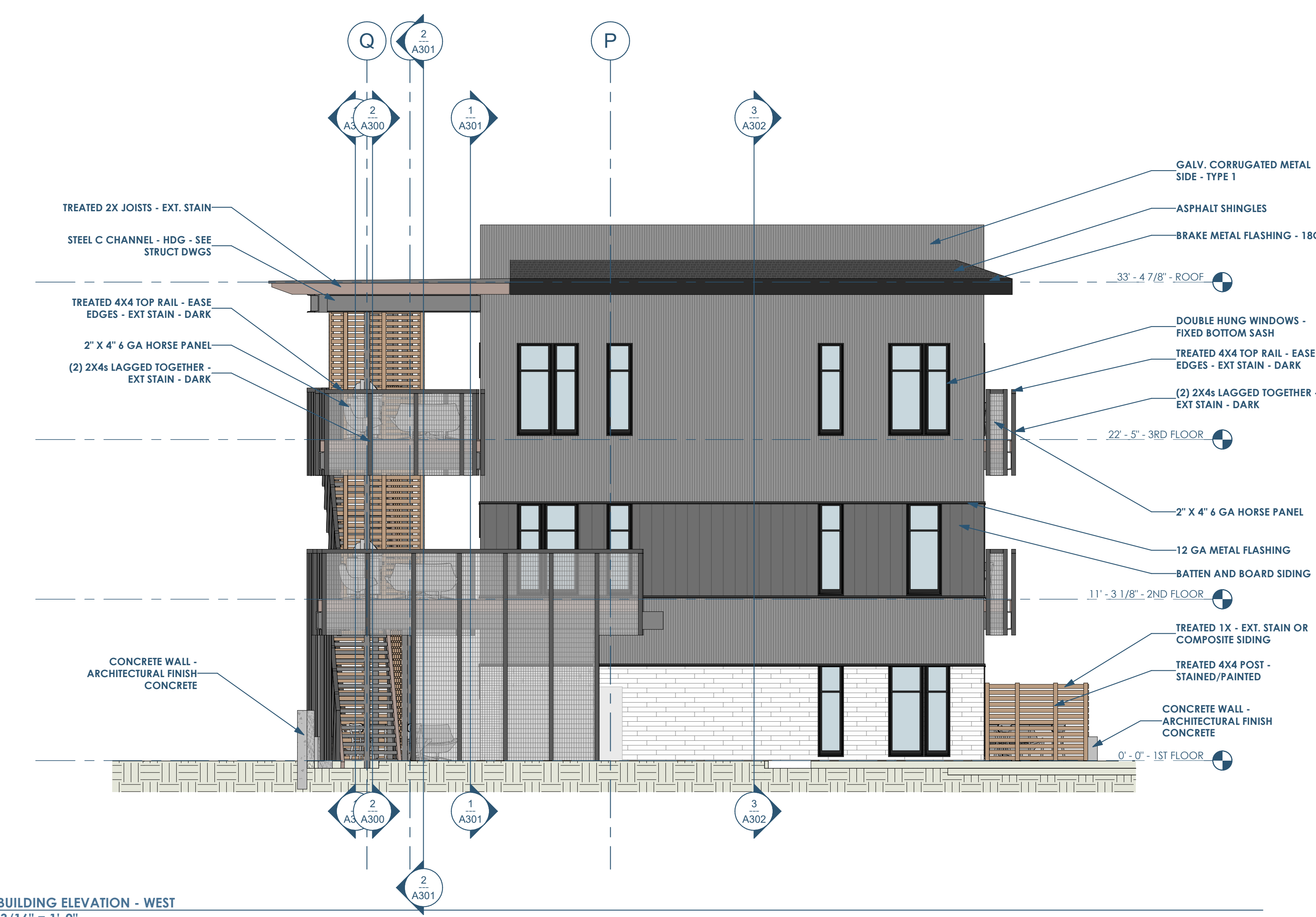
STRUCTURE
DUDLEY
Structural: Dudley
4102 Imperial Loop Drive
College Station, TX 77845
(979) 777-0720

MEP: AMC ENGINEERS
AMC ENGINEERS
MEP: AMC Engineers
508 E Jackson St # 552
Burnet, TX 78611
info@amcengineers.com

This project, like most OpeningDesign's projects, is open source (Attribution-ShareAlike 4.0 International-CC BY-SA 4.0)-freely available to any party for future use, assuming the terms such as Attribution and ShareAlike are honored.



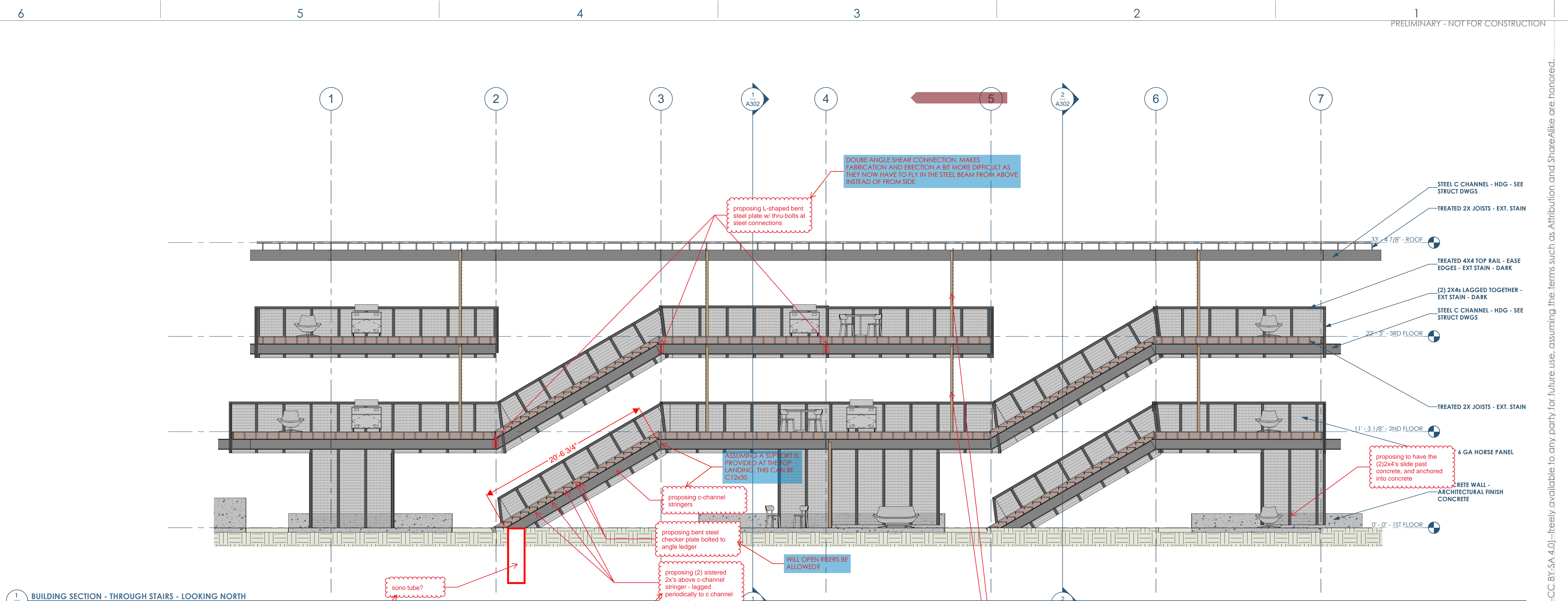
1 A200 BUILDING ELEVATION - NORTH
3/16" = 1'-0"



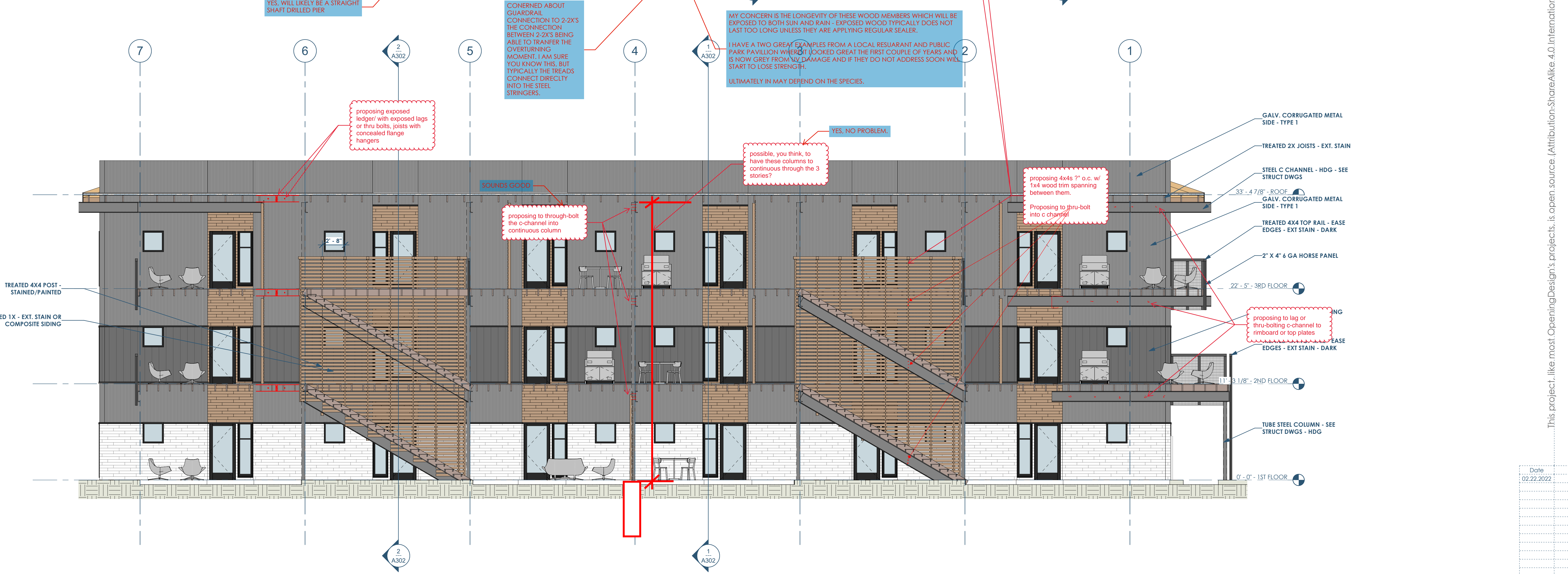
2 A200 BUILDING ELEVATION - WEST
3/16" = 1'-0"

openingdesign
Architect: OpeningDesign
17 S Fairchild | FL 7
Madison, WI 53703
ryan@openingdesign.com | 773.425.6456

Date	Description
02.22.2022	Progress DD Set



1 A300 BUILDING SECTION - THROUGH STAIRS - LOOKING NORTH
3/16" = 1'-0"



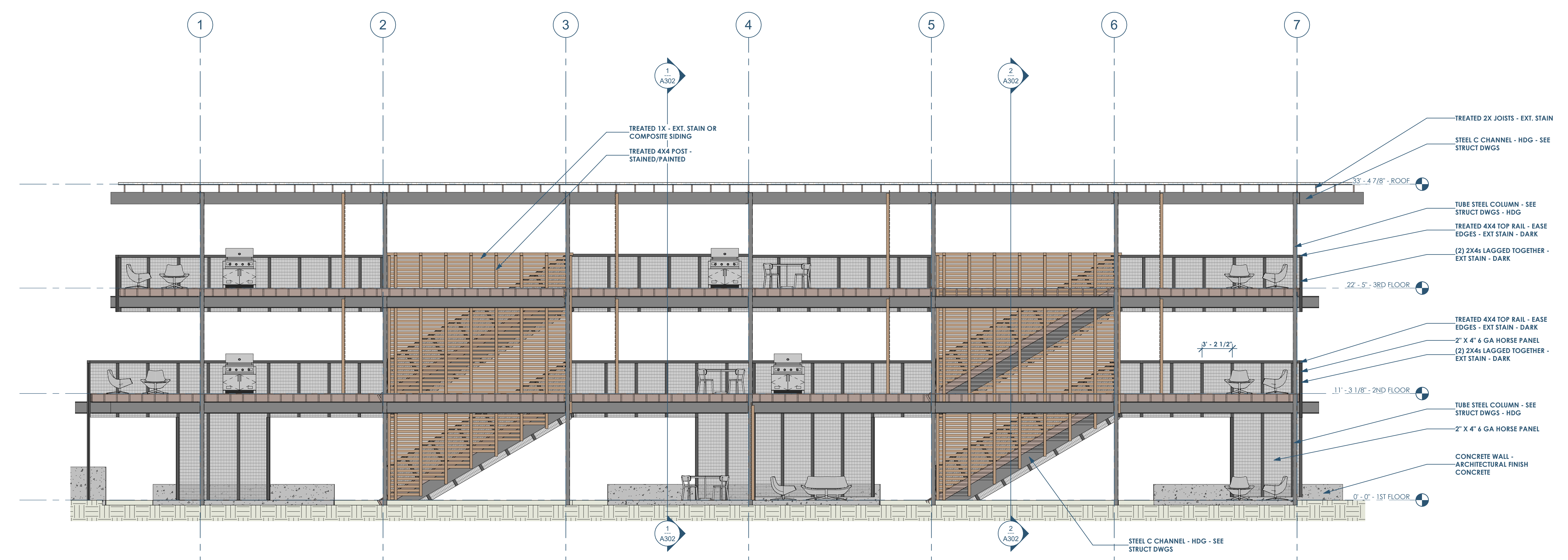
2 A300 BUILDING SECTION - THROUGH STAIRS - LOOKING SOUTH
3/16" = 1'-0"

This project, like most OpeningDesign's projects, is open source. (Attribution-ShareAlike 4.0 International-CC BY-SA 4.0) - freely available to any party for future use, assuming the terms such as Attribution and ShareAlike are honored.

Date	Description
02.22.2022	Progress DD Set



1 A301 BUILDING SECTION - THRU BALCONY - LOOKING SOUTH
3/16" = 1'-0"



2 A301 BUILDING SECTION - THRU BALCONY - LOOKING NORTH
3/16" = 1'-0"

This project, like most OpeningDesign's projects, is open source (Attribution-ShareAlike 4.0 International-CC BY-SA 4.0)-freely available to any party for future use, assuming the terms such as Attribution and ShareAlike are honored.

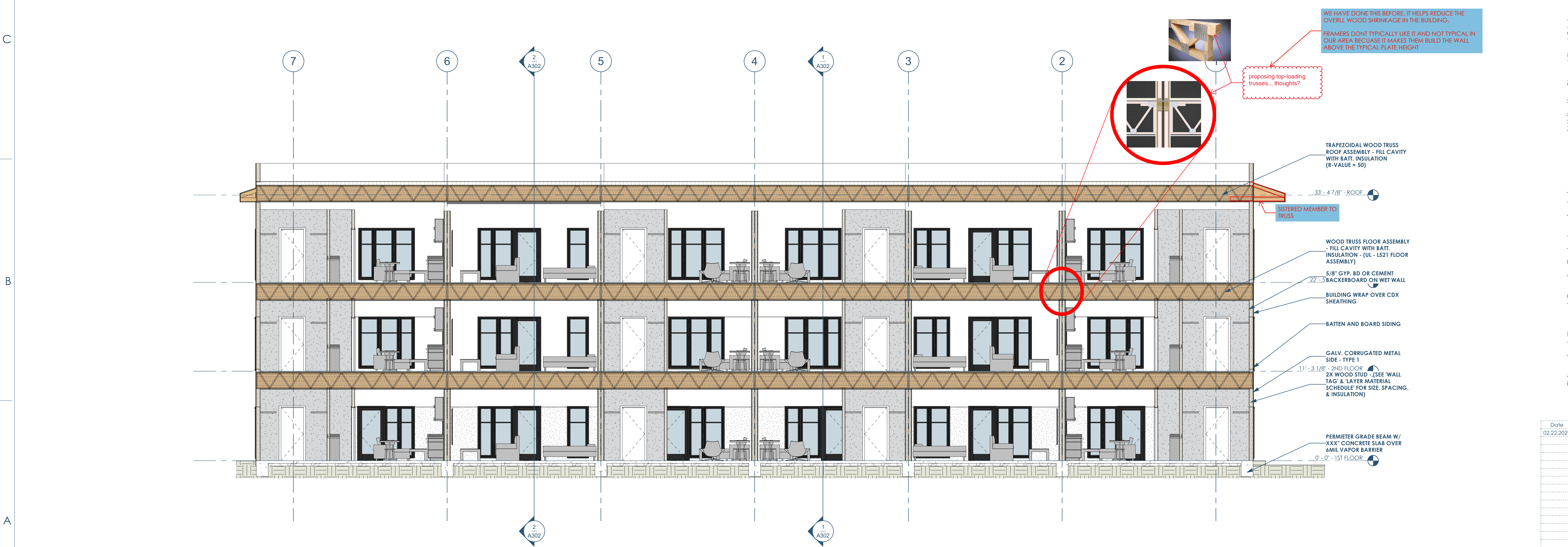
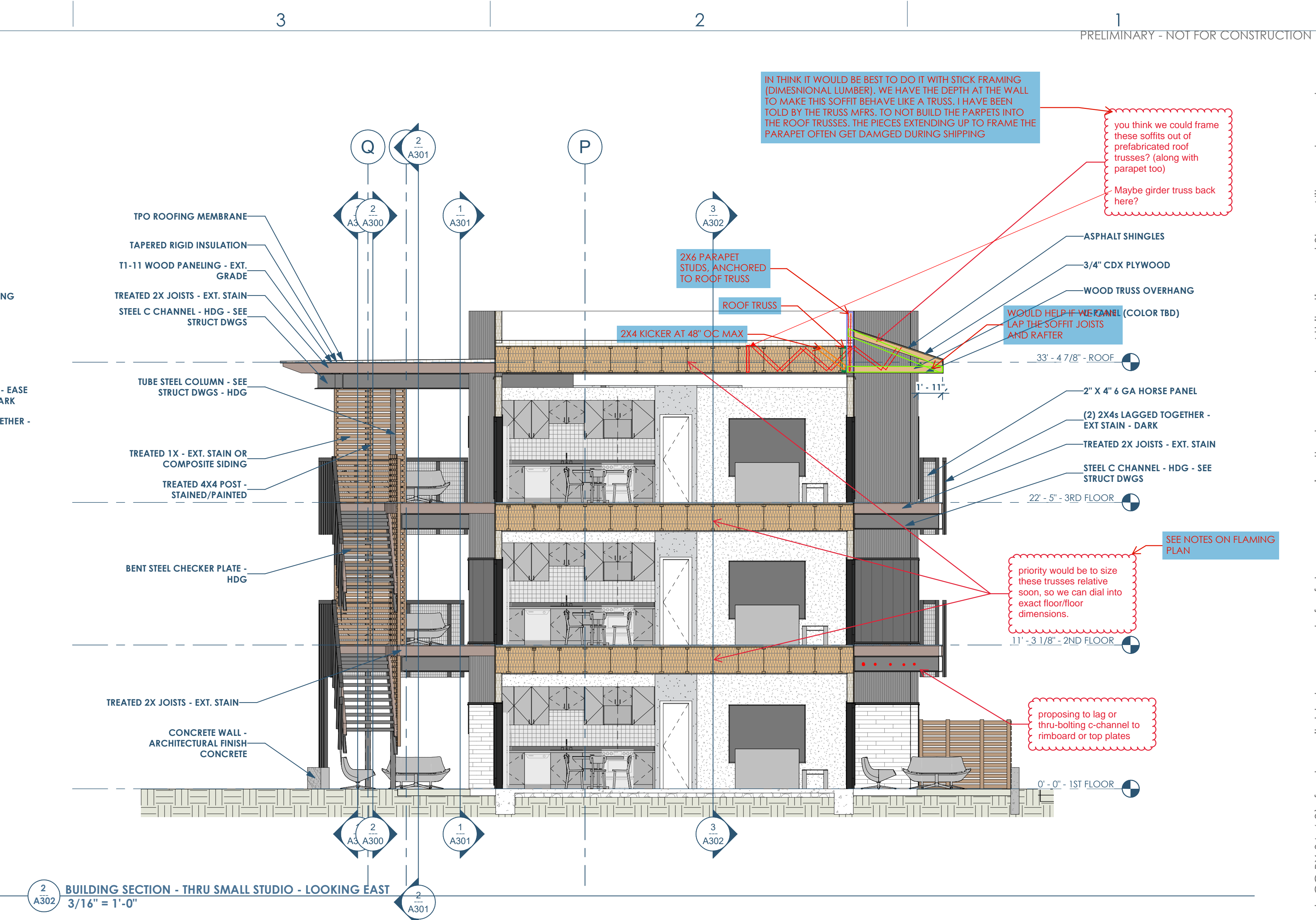
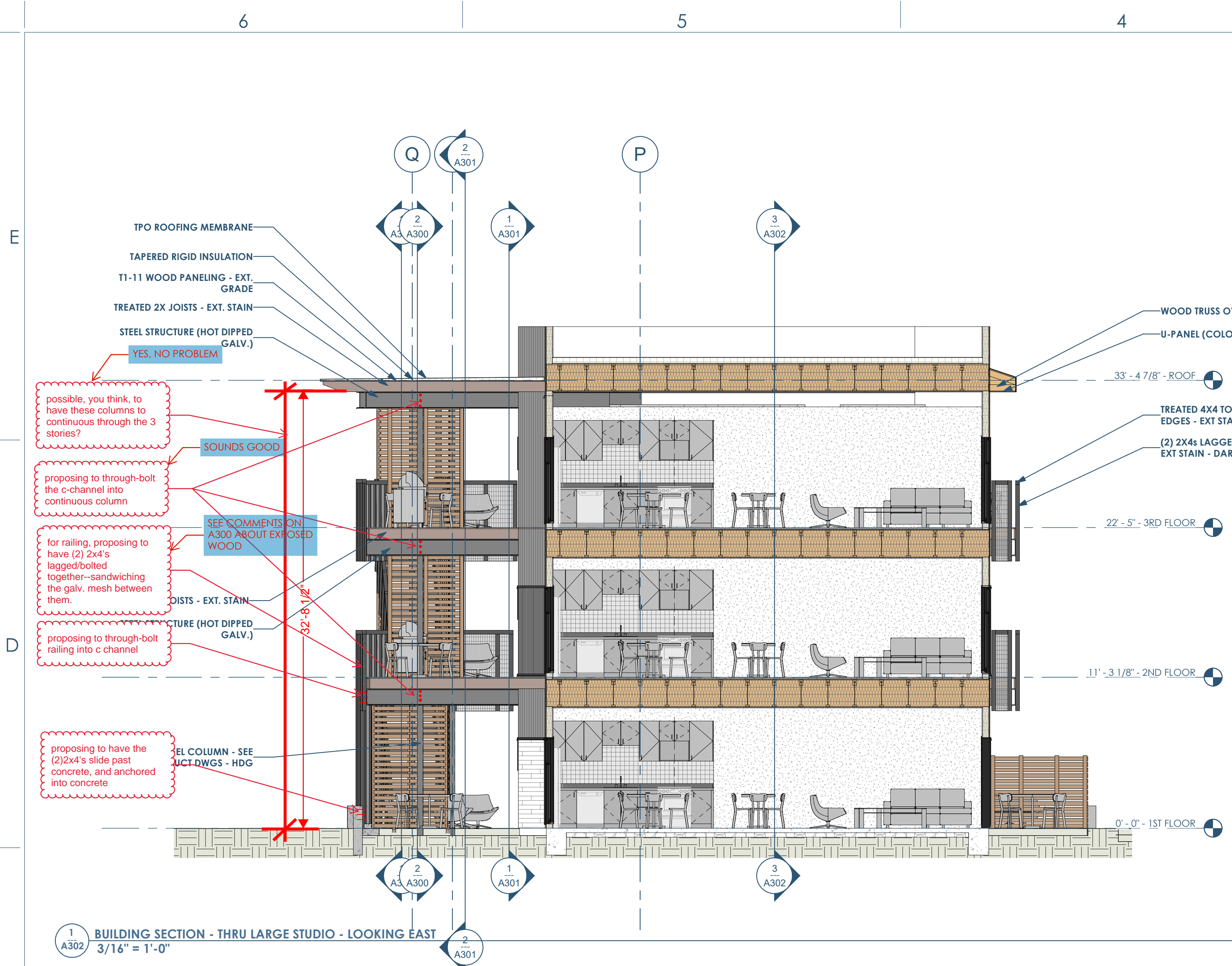
Date	Description
02.22.2022	Progress DD Set

RENOVATION Wranglers
 Owner: Renovation Wranglers
 102 E 26th St
 Bryan, TX 77803
 Katerencason@time.com | 979.450.9969

ARCHITECTURE
 Architect of Record: LKB Architecture
 2929 Allen Pkwy Suite 200
 Houston, TX 77019
 isa@lkbarchitecture.com | 713.425.3076

DUDDLEY
 Structural: Dudley
 4102 Imperial Loop Drive
 College Station, TX 77845
 (979) 777-0720

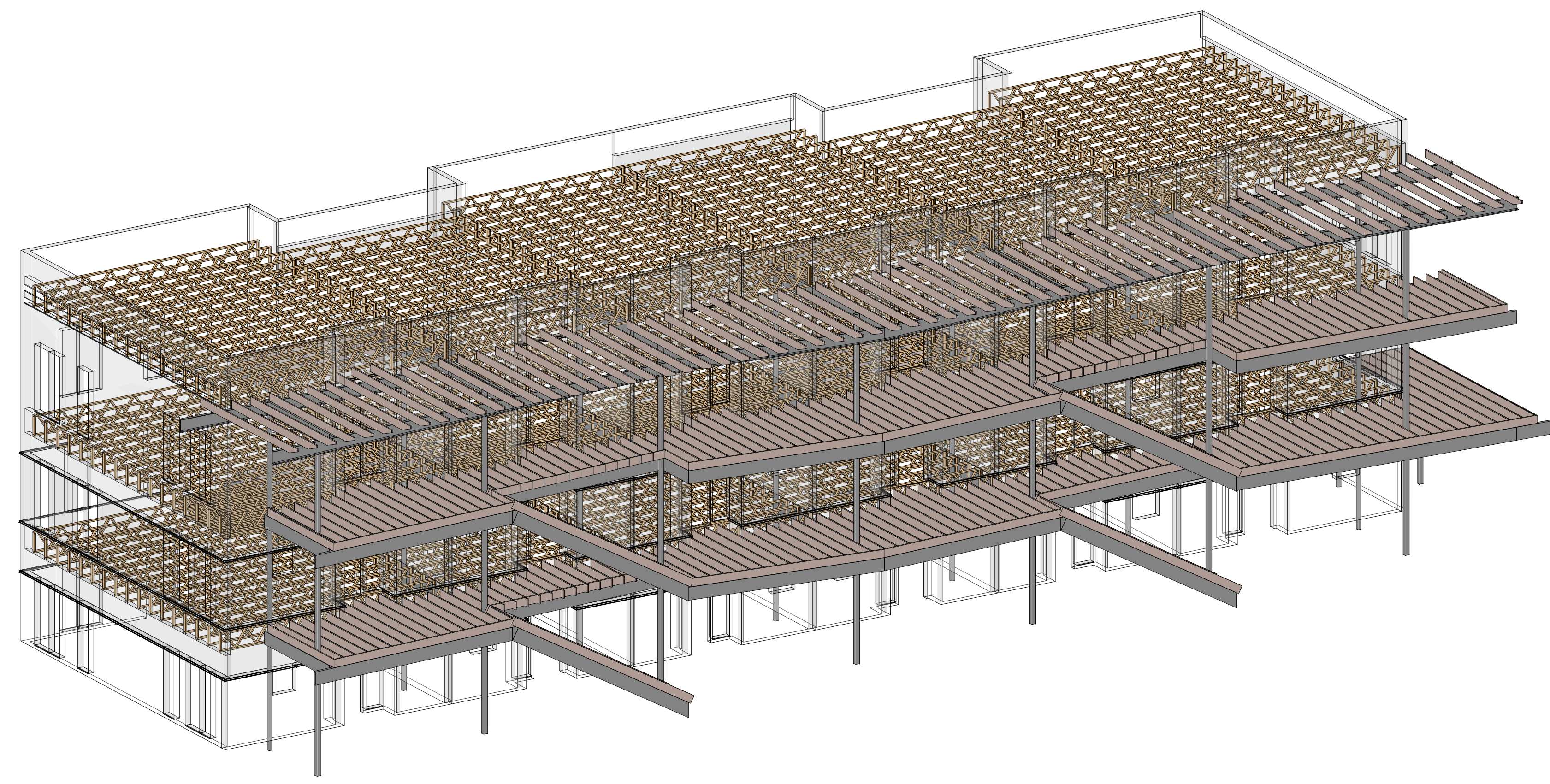
amc ENGINEERS
 MEP: AMC Engineers
 508 E Jackson St # 552
 Burnet, TX 78611
 info@amcengineers.com



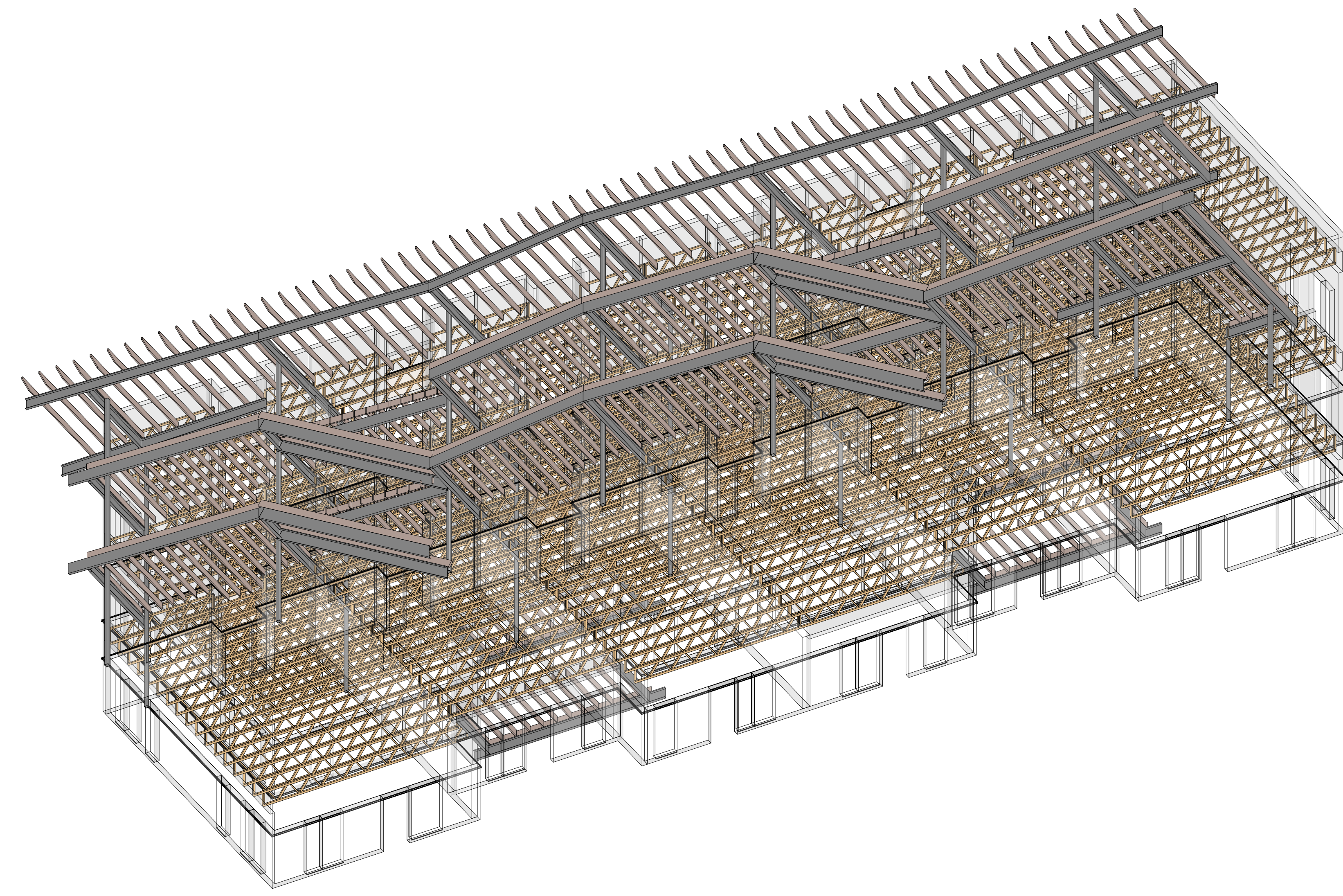
3 BUILDING SECTION - EAST/WEST - LOOKING SOUTH
3/16" = 1'-0"

This project, like most OpeningDesign's projects, is open source (Attribution-ShareAlike 4.0 International-CC BY-SA 4.0)-freely available to any party for future use, assuming the terms such as Attribution and ShareAlike are honored.

Date	Description
02/22/2022	Progress DD Set



1 STRUCTURAL FRAMING - 3D - 1
S900



2 STRUCTURAL FRAMING - 3D - 2
S900

RENOVATION Wranglers
Owner: Renovation Wranglers
102 E 26th St
Bryan, TX 77803
Katherine@wranglers.com | 979.450.9969

LKB ARCHITECTURE
Architect of Record: LKB Architecture
2929 Allen Pkwy Suite 200
Houston, TX 77019
isa@lkbarchitecture.com | 713.425.3076

DUDLEY
Structural: Dudley
6102 Imperial Loop Drive
College Station, TX 77845
(979) 777-0720

amc ENGINEERS
MEP: AMC Engineers
508 E Jackson St # 552
Burnet, TX 78611
info@amcengineers.com

This project, like most OpeningDesign's projects, is open source (Attribution-ShareAlike 4.0 International-CC BY-SA 4.0)—freely available to any party for future use, assuming the terms such as Attribution and ShareAlike are honored.

openingdesign
Architect: OpeningDesign
17 S Fairchild | FL 7
Madison, WI 53703
ryan@openingdesign.com | 773.425.6456

Date	Description
02.22.2022	Progress DD Set