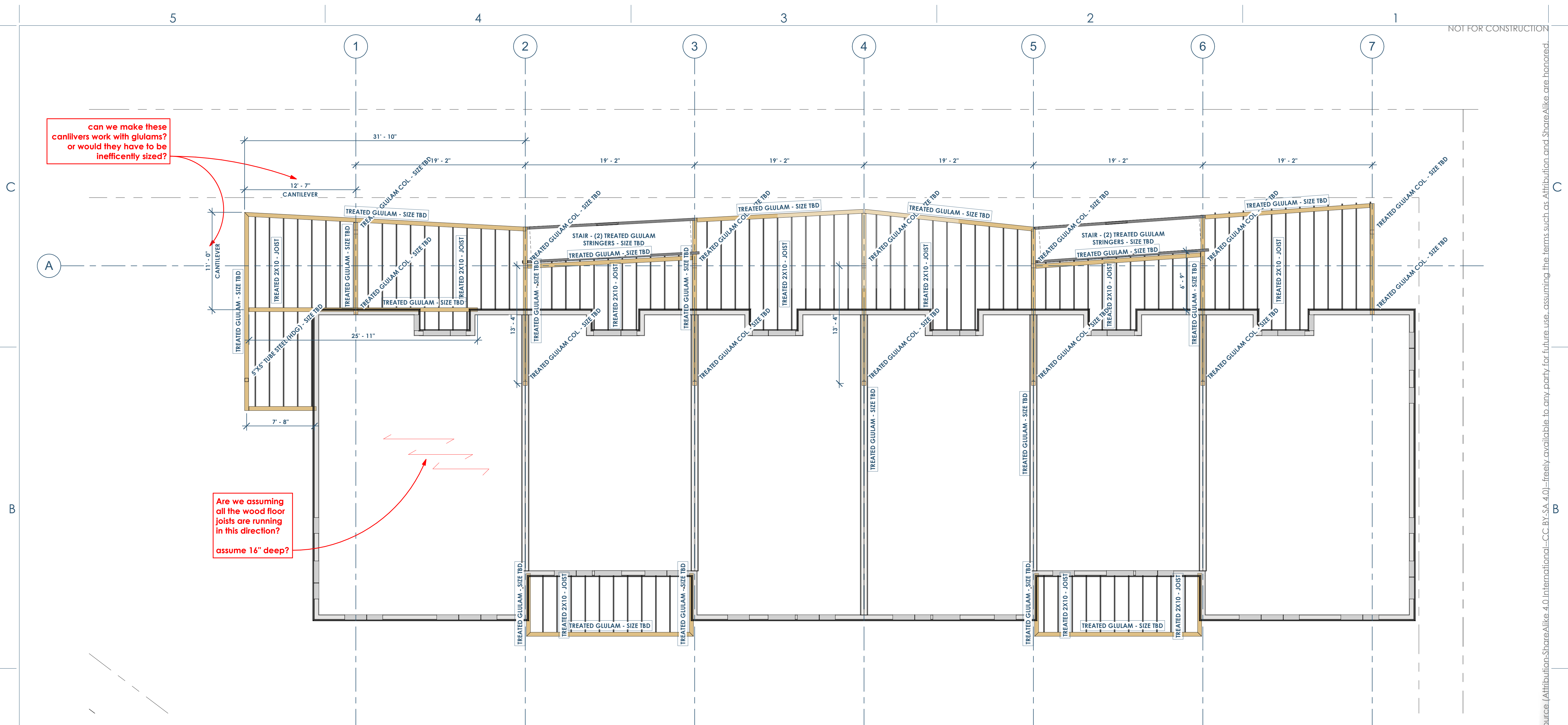


can we make these cantilevers work with glulams? or would they have to be inefficiently sized?

Are we assuming all the wood floor joists are running in this direction? assume 16" deep?



1 ST01 SCHEMATIC FRAMING PLAN - 2ND FLOOR  
3/16" = 1'-0"



Owner: Renovation Wranglers  
102 E 26th St  
Bryan, TX 77803  
katieneason@me.com | 979.450.9969

Architect of Record: LKB Architecture  
2929 Allen Pkwy Suite 200  
Houston, TX 77019  
lisa@lkbarchitecture.com | 713.425.3076

Architect: Ryan Schultz - OpeningDesign  
17 S Fairchild St | FL 7  
Madison, WI 53703  
ryan@openingdesign.com | 773.425.6456

SCHEMATIC FRAMING PLAN - 2ND FLOOR - 02.09.2022

101 W 33RD STREET  
BRYAN, TX 77803

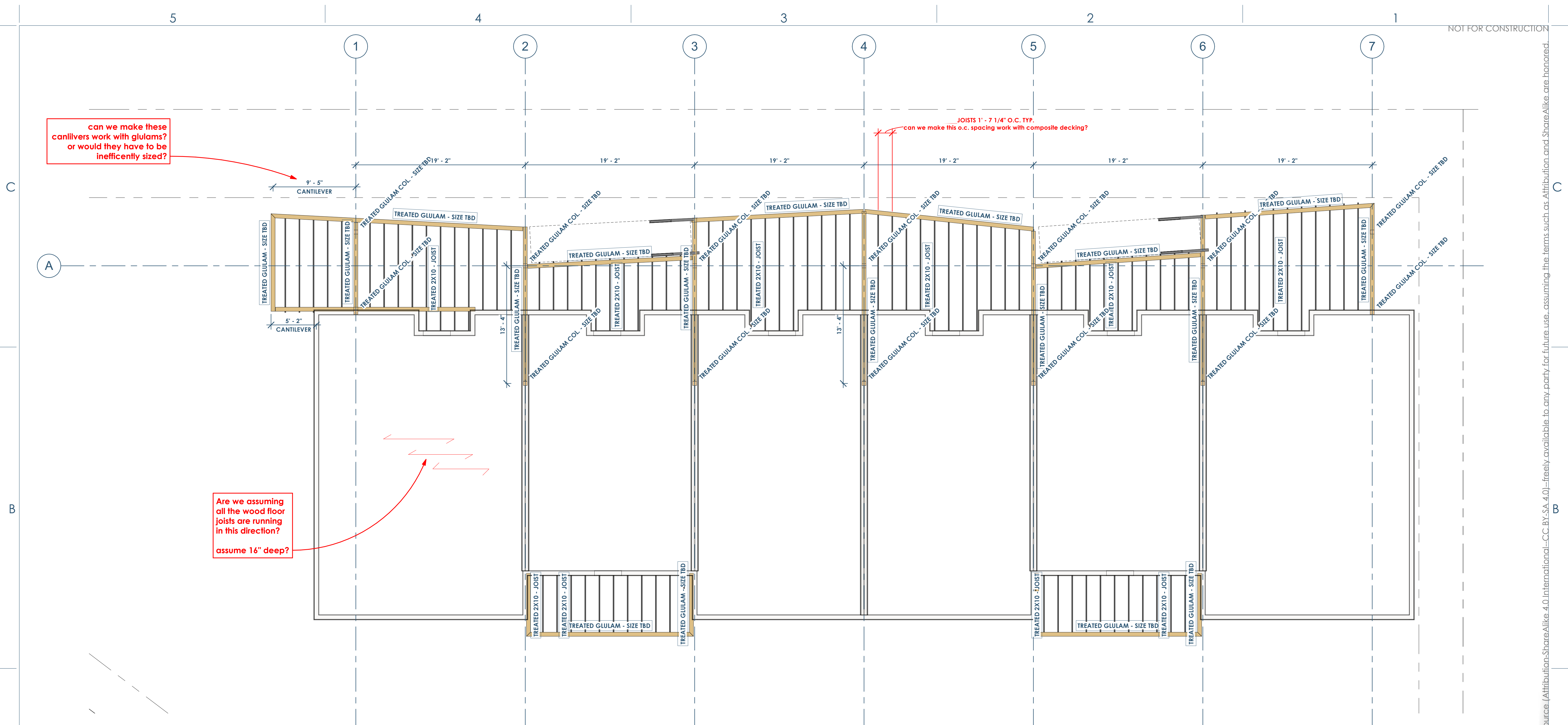
S101

This project, like most OpeningDesign's projects, is open source. (Attribution-ShareAlike 4.0 International) - CC BY-SA 4.0 - freely available to any party for future use, assuming the terms such as Attribution and ShareAlike are honored.

can we make these cantilevers work with glulams? or would they have to be inefficiently sized?

JOISTS 1' - 7 1/4" O.C. TYP. can we make this o.c. spacing work with composite decking?

Are we assuming all the wood floor joists are running in this direction? assume 16" deep?



1 S102 SCHEMATIC FRAMING PLAN - 3RD FLOOR 3/16" = 1'-0"



Owner: Renovation Wranglers  
102 E 26th St  
Bryan, TX 77803  
katieneason@me.com | 979.450.9969

Architect of Record: LKB Architecture  
2929 Allen Pkwy Suite 200  
Houston, TX 77019  
lisa@lkbarchitecture.com | 713.425.3076

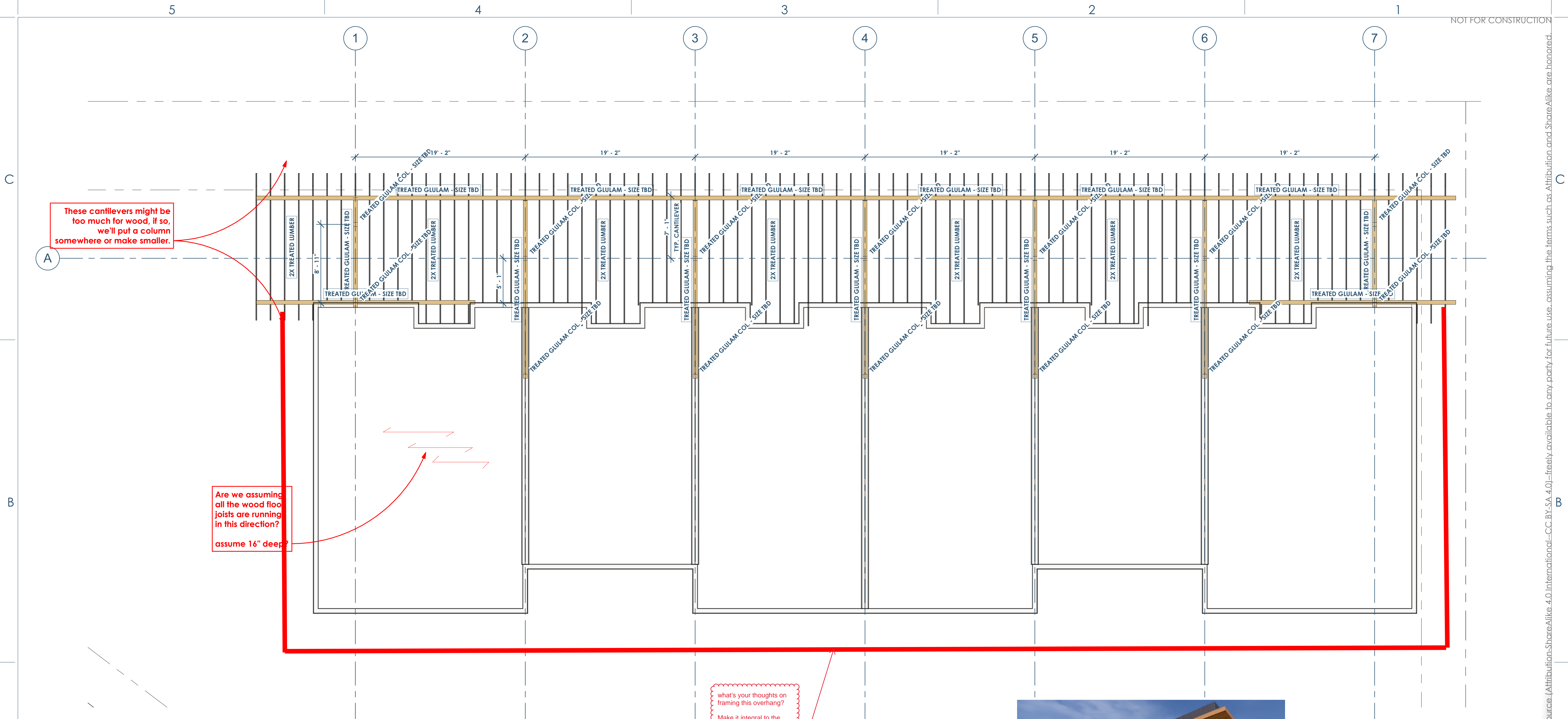
Architect: Ryan Schultz - OpeningDesign  
17 S Fairchild St | Fl 7  
Madison, WI 53703  
ryan@openingdesign.com | 773.425.6456

SCHEMATIC FRAMING PLAN - 3RD FLOOR - 02.09.2022  
101 W 33RD STREET  
BRYAN, TX 77803

S102

This project, like most OpeningDesign's projects, is open source. (Attribution-ShareAlike 4.0 International) - CC BY-SA 4.0 - freely available to any party for future use, assuming the terms such as Attribution and ShareAlike are honored.





These cantilevers might be too much for wood, if so, we'll put a column somewhere or make smaller.

Are we assuming all the wood floor joists are running in this direction? assume 16" deep?

what's your thoughts on framing this overhang? Make it integral to the wood roof trusses? Make the parapet integral to the trusses as well?

1 S103 SCHEMATIC FRAMING PLAN - ROOF  
3/16" = 1'-0"

