

RENOVATION
Wranglers

Owner: Renovation Wranglers
102 E 26th St
Bryan, TX 77803
kate@renovationtime.com | 979.450.9969

ARCHITECTURE
Architect of Record: LKB Architecture
2929 Allen Pkwy Suite 200
Houston, TX 77019
isa@lkbarchitecture.com | 713.425.3076

DUDLEY
Structural: Dudley
Firm # 18677
6102 Imperial Loop Drive
College Station, TX 77845
colleka@dudleyeng.com | (979) 777-0720

amc
ENGINEERS
MEP: AMC Engineers
Texas Firm #9441
508 E Jackson St # 552
Bunnet, TX 78611
info@amcengineers.com | 512.535.6427

REGISTERED ARCHITECT
LISA B. BIXLER
22039
STATE OF TEXAS

Lisa Bixler
8.26.22

PARTITION TAG NOMENCLATURE

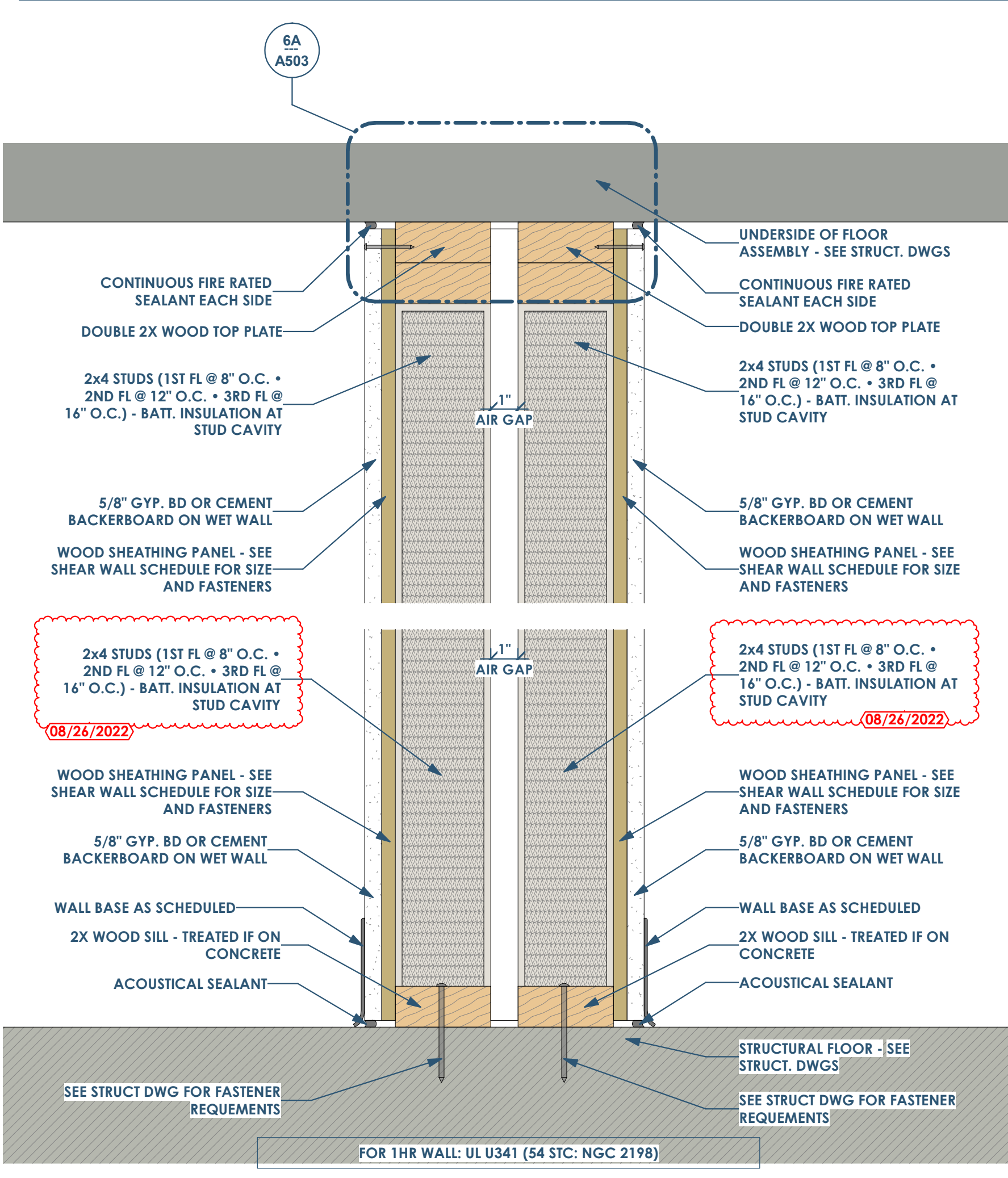
- 1ST LETTER = CORE MATERIAL
 - W= WOOD
 - M=METAL
 - C=CONCRETE
 - B=MASONRY BLOCK
- 2ND LETTER = SIZE OF CORE
 - WOOD: NOMINAL STUD SIZES (EX: 4 = 3 1/2")
 - METAL STUD: (EX 358 = 3 5/8")
 - CONCRETE: ACTUAL WALL THICKNESS (EX: 8 = 8")
 - MASONRY: NOMINAL BRICK MODULES (EX: 8 = 7 5/8")
- 3RD LETTER = LAYER MATERIAL

| | LAYER 3 | LAYER 2 | LAYER 1 | CORE | LAYER 1 | LAYER 2 | LAYER 3 | IF FIRE RATED - UL NUMBER |
|----|--|--|--|---|--|---------------------------|------------------------------|---------------------------|
| A= | - | - | 5/8" GYP. BD OR CEMENT BACKERBOARD ON WET WALL | STUDS 16" O.C. (20 GA. IF METAL) | 5/8" GYP. BD OR CEMENT BACKERBOARD ON WET WALL | - | - | UL U305 |
| B= | - | - | 5/8" GYP. BD OR CEMENT BACKERBOARD ON WET WALL | STUDS 16" O.C. (20 GA. IF METAL) BATT INSULATION | 5/8" GYP. BD OR CEMENT BACKERBOARD ON WET WALL | - | - | UL U305 |
| C= | - | - | 5/8" GYP. BD OR CEMENT BACKERBOARD ON WET WALL | STUDS 16" O.C. (20 GA. IF METAL) | (PROVIDE 1/4" AIR GAP IF AGAINST CONCRETE OR MASONRY) | - | - | - |
| D= | - | - | 5/8" GYP. BD OR CEMENT BACKERBOARD ON WET WALL | STUDS 16" O.C. (20 GA. IF METAL) BATT INSULATION | (PROVIDE 1/4" AIR GAP IF AGAINST CONCRETE OR MASONRY) - USE TREATED WOOD STUDS IF IN CONTACT WITH CONCRETE/MASONRY | - | - | - |
| G= | - | - | 5/8" GYP. BD OR CEMENT BACKERBOARD ON WET WALL | SEE WALL STUD SCHEDULE - STRUCT. DWGS. - W/(R-19) BATT INSULATION | 1" AIR GAP (PART OF A DOUBLE STUD WALL) | - | - | UL 341 |
| H= | - | 5/8" GYP. BD OR CEMENT BACKERBOARD ON WET WALL | SHEATHING - SEE STRUCT. DWGS | SEE WALL STUD SCHEDULE - STRUCT. DWGS. - W/(R-19) BATT INSULATION | 1" AIR GAP (PART OF A DOUBLE STUD WALL) | - | - | UL 341 |
| Q= | FIBER CEMENT - CLAPBOARD SIDING | DRAINAGE WRAP - ASTM 2273 | SHEATHING - SEE STRUCT. DWGS | SEE WALL STUD SCHEDULE - STRUCT. DWGS. - W/(R-19) BATT INSULATION | 5/8" GYP. BD OR CEMENT BACKERBOARD ON WET WALL | - | - | - |
| R= | FIBER CEMENT - BATTEN AND BOARD SIDING | DRAINAGE WRAP - ASTM 2273 | SHEATHING - SEE STRUCT. DWGS | SEE WALL STUD SCHEDULE - STRUCT. DWGS. - W/(R-19) BATT INSULATION | 5/8" GYP. BD OR CEMENT BACKERBOARD ON WET WALL & SHEATHING LAYER, IF AT PARTY WALL (SEE STRUCT DWGS) | - | - | - |
| S= | 7/8" CORRUGATED METAL SIDING | DRAINAGE WRAP - ASTM 2273 | SHEATHING - SEE STRUCT. DWGS | SEE WALL STUD SCHEDULE - STRUCT. DWGS. - W/(R-19) BATT INSULATION | 5/8" GYP. BD OR CEMENT BACKERBOARD ON WET WALL & SHEATHING LAYER, IF AT PARTY WALL (SEE STRUCT DWGS) | - | - | - |
| T= | FIBER CEMENT - CLAPBOARD SIDING | DRAINAGE WRAP - ASTM 2273 | 5/8" FIBERGLASS MAT GYPSUM SHEATHING | SEE WALL STUD SCHEDULE - STRUCT. DWGS. - W/(R-19) BATT INSULATION | 5/8" GYP. BD OR CEMENT BACKERBOARD ON WET WALL & SHEATHING LAYER, IF AT PARTY WALL (SEE STRUCT DWGS) | - | - | UL U305 |
| U= | FIBER CEMENT - BATTEN AND BOARD SIDING | DRAINAGE WRAP - ASTM 2273 | 5/8" FIBERGLASS MAT GYPSUM SHEATHING | SEE WALL STUD SCHEDULE - STRUCT. DWGS. - W/(R-19) BATT INSULATION | 5/8" GYP. BD OR CEMENT BACKERBOARD ON WET WALL & SHEATHING LAYER, IF AT PARTY WALL (SEE STRUCT DWGS) | - | - | UL U305 |
| V= | 7/8" CORRUGATED METAL SIDING | DRAINAGE WRAP - ASTM 2273 | 5/8" FIBERGLASS MAT GYPSUM SHEATHING | SEE WALL STUD SCHEDULE - STRUCT. DWGS. - W/(R-19) BATT INSULATION | 5/8" GYP. BD OR CEMENT BACKERBOARD ON WET WALL & SHEATHING LAYER, IF AT PARTY WALL (SEE STRUCT DWGS) | - | - | UL U305 |
| W= | 7/8" CORRUGATED METAL SIDING | DRAINAGE WRAP - ASTM 2273 | SHEATHING - SEE STRUCT. DWGS | SEE WALL STUD SCHEDULE - STRUCT. DWGS. - W/(R-19) BATT INSULATION | SHEATHING - SEE STRUCT. DWGS | DRAINAGE WRAP - ASTM 2273 | 7/8" CORRUGATED METAL SIDING | - |
| X= | 7/8" CORRUGATED METAL SIDING | DRAINAGE WRAP - ASTM 2273 | 5/8" FIBERGLASS MAT GYPSUM SHEATHING | SEE WALL STUD SCHEDULE - STRUCT. DWGS. - W/(R-19) BATT INSULATION | 5/8" FIBERGLASS MAT GYPSUM SHEATHING | DRAINAGE WRAP - ASTM 2273 | 7/8" CORRUGATED METAL SIDING | UL U305 |
| Z= | - | - | 1/4 GA PERFORATED GALV. STEEL | 2.5" 12GA. STRUCTURAL METAL STUD - C/P90 GALV. | - | - | - | - |

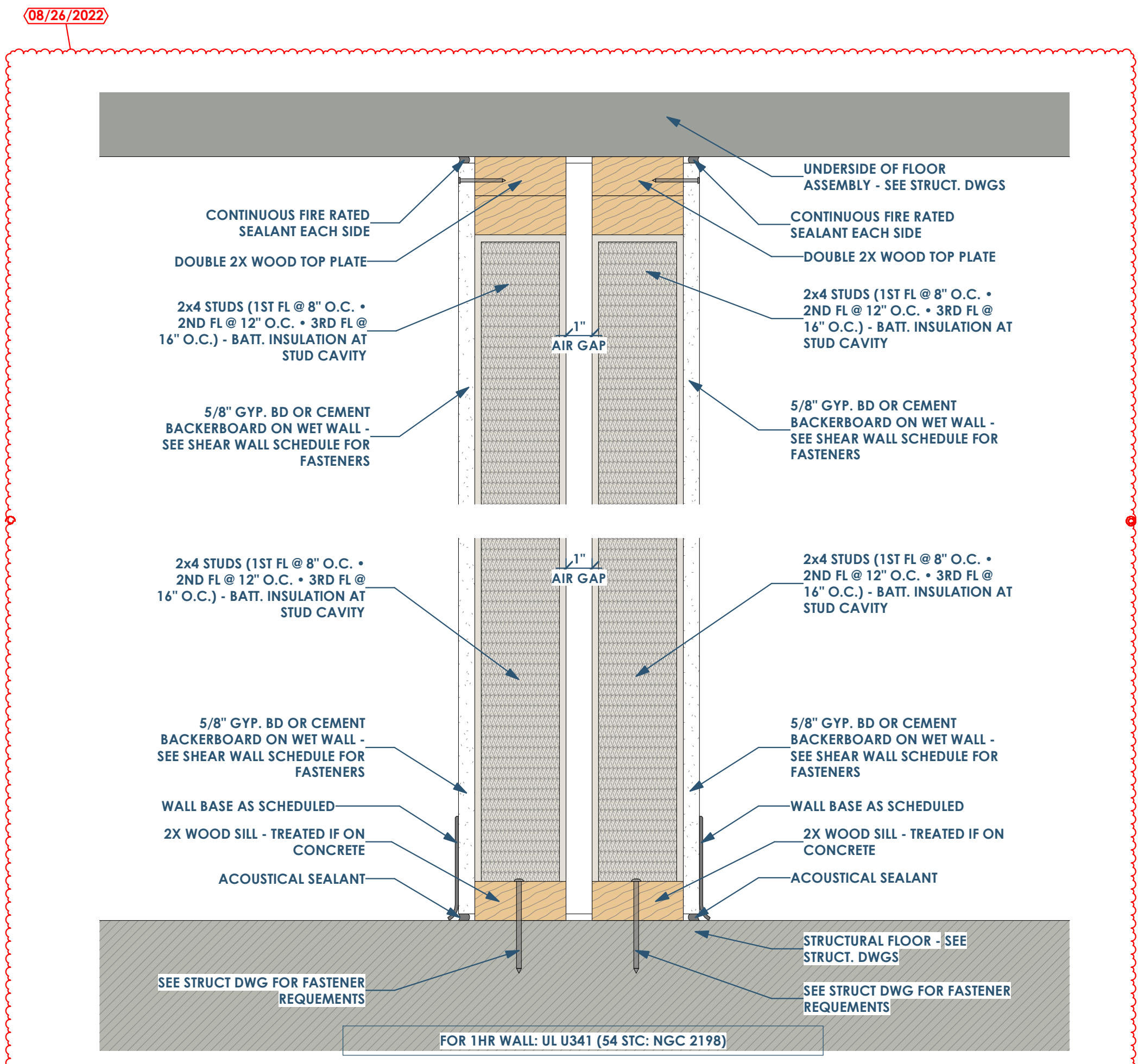
- 4TH NUMBER: FIRE RATING
 - 0=0 HOUR
 - 1=1 HOUR
 - 2=2 HOUR
 - 3=3 HOUR
 - 5=5 HOUR

- 5TH (AND BEYOND) LETTERS = MODIFIERS
 - A=PARTIAL HEIGHT PARTITION (WALL LAYER 1, 2, & 3 TO EXTEND 4" ABOVE FINISHED CEILING HEIGHT)
 - B=PARTIAL HEIGHT WALL (WALL LAYER 1, 2, & 3 TO TERMINATE AT OR BELOW HUNG CEILING)
 - D=FULL HEIGHT TO UNDERSIDE OF STRUCTURAL DECK/SHEATHING (CORE AND WALL LAYER 1, 2, & 3 TO TERMINATE AT STRUCTURAL DECK)
 - F=FULL HEIGHT TO THE BOTTOM OF STRUCTURE
 - K=KNEE WALL PARTITION
 - R=FURRED OUT WALL

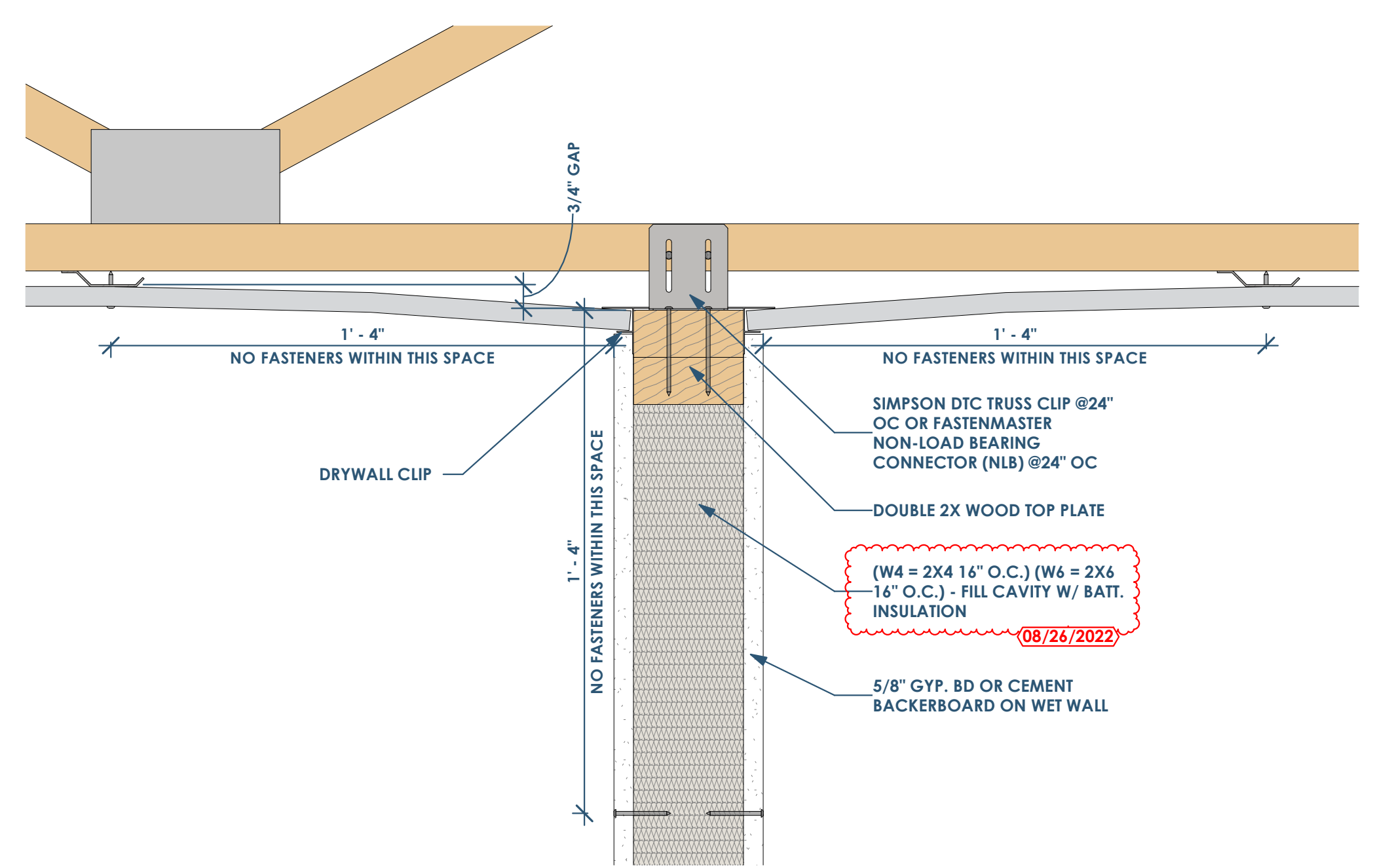
- EXAMPLE: M358B0AR
 - M=METAL
 - 358=3 5/8" METAL STUD
 - B=20 GA METAL STUDS 16" O.C. W/ BATT INSULATION
 - 0=0 HOUR
 - A=PARTIAL HEIGHT PARTITION (WALL LAYER 1, 2, & 3 TO EXTEND 4" ABOVE FINISHED CEILING HEIGHT)
 - R=FURRED OUT WALL



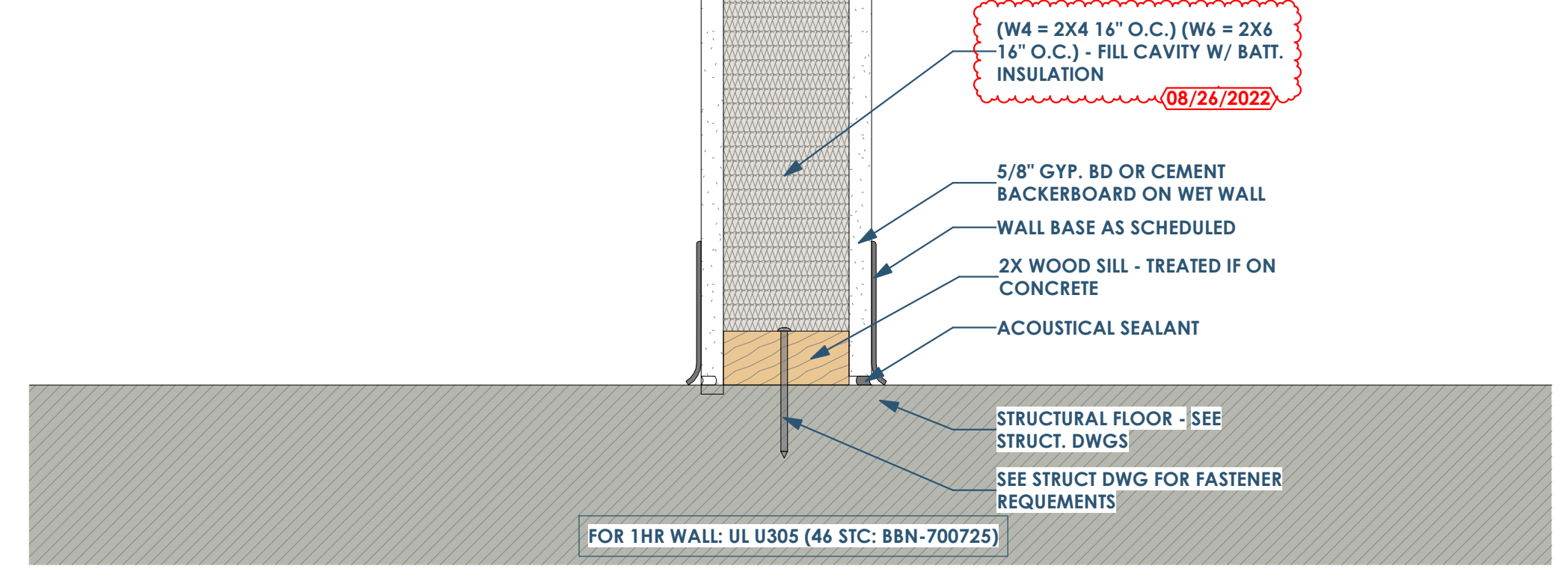
W4H5F PARTY WALL - 1 HR RATED WALL (ONLY NEEDS TO BE 1/2 HR RATED)
3" = 1'-0"



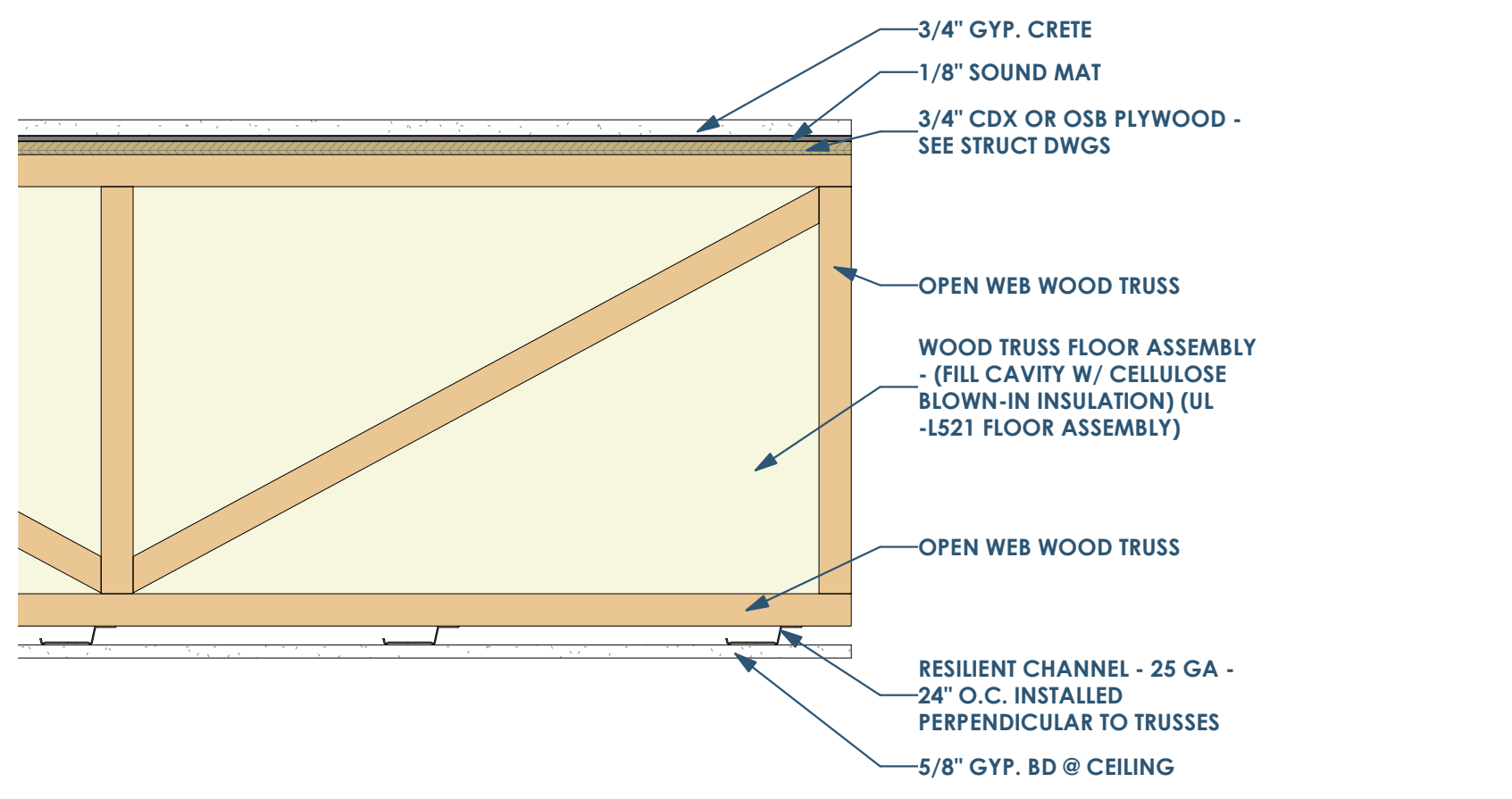
W4G5F PARTY WALL - 1 HR RATED WALL (ONLY NEEDS TO BE 1/2 HR RATED)
3" = 1'-0"



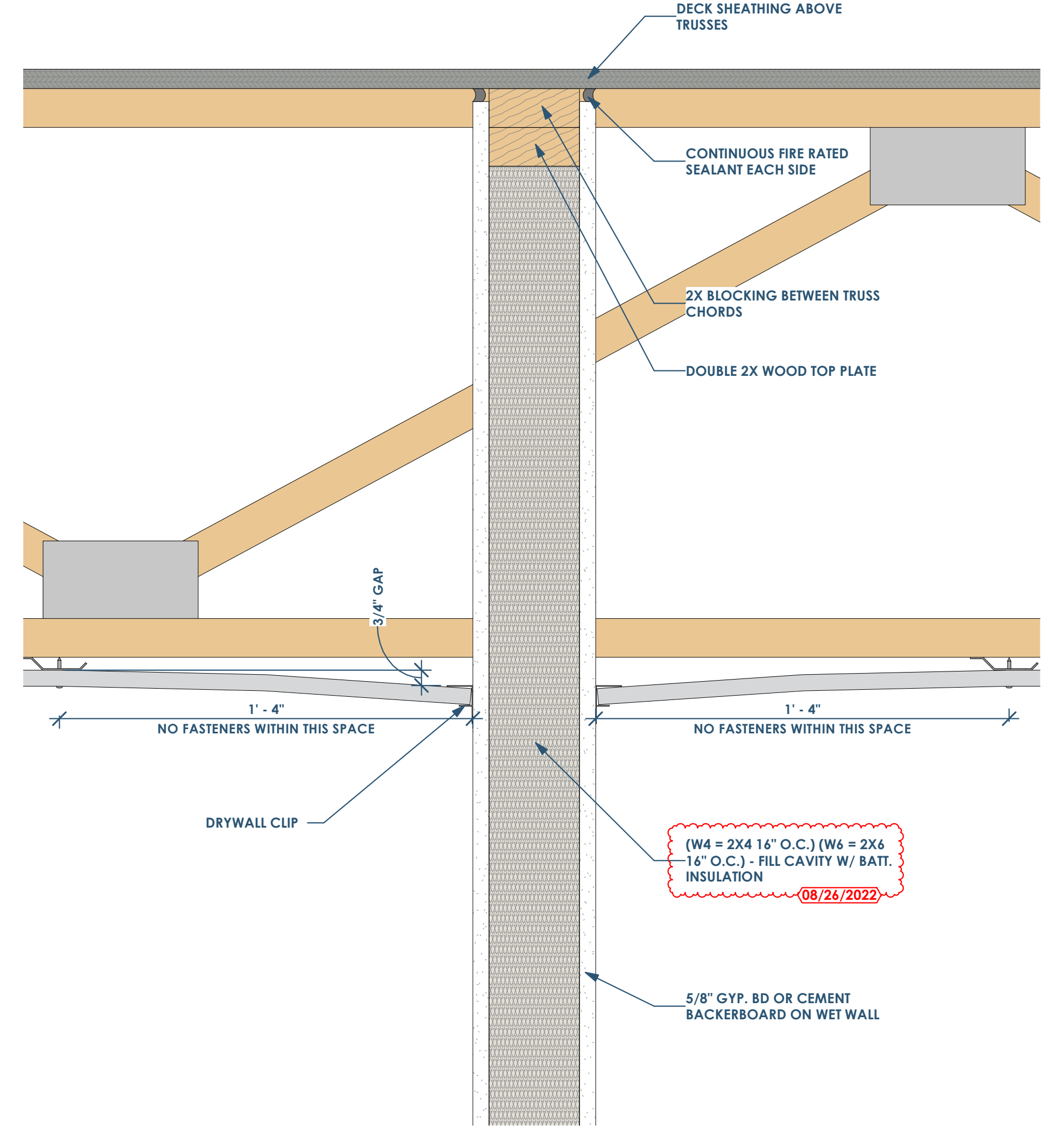
W4B0F PARTY WALL - 1 HR RATED WALL (ONLY NEEDS TO BE 1/2 HR RATED)
3" = 1'-0"



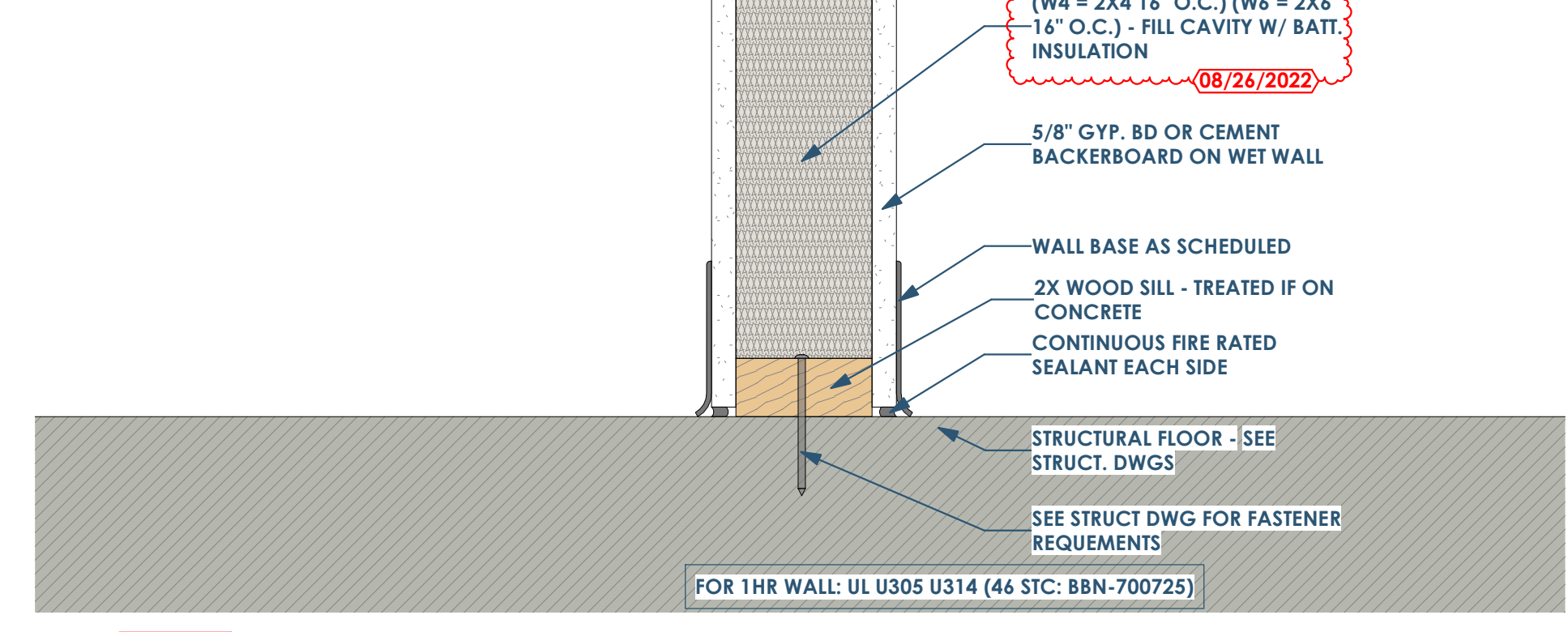
W4B0F PARTY WALL - 1 HR RATED WALL (ONLY NEEDS TO BE 1/2 HR RATED)
3" = 1'-0"



FLOOR/CEILING ASSEMBLY - L521
1 1/2" = 1'-0"



W4B1D FULL HEIGHT - TO DECK - PARTITION (1 HR RATED)
3" = 1'-0"



W4B0F FULL HEIGHT PARTITION
3" = 1'-0"

This project, like most OpeningDesign's projects, is open source. (Attribution-ShareAlike 4.0 International-CC BY-SA 4.0)-freely available to any party for future use, assuming the terms such as Attribution and ShareAlike are honored.

| Date | Description |
|------------|-------------------|
| 08/10/2022 | Issued for Permit |
| 08/26/2022 | Permit Revisions |

openingdesign
Architect: OpeningDesign
17 S Fairchild | FL 7
Madison, WI 53703
ryan@openingdesign.com | 773.425.6456