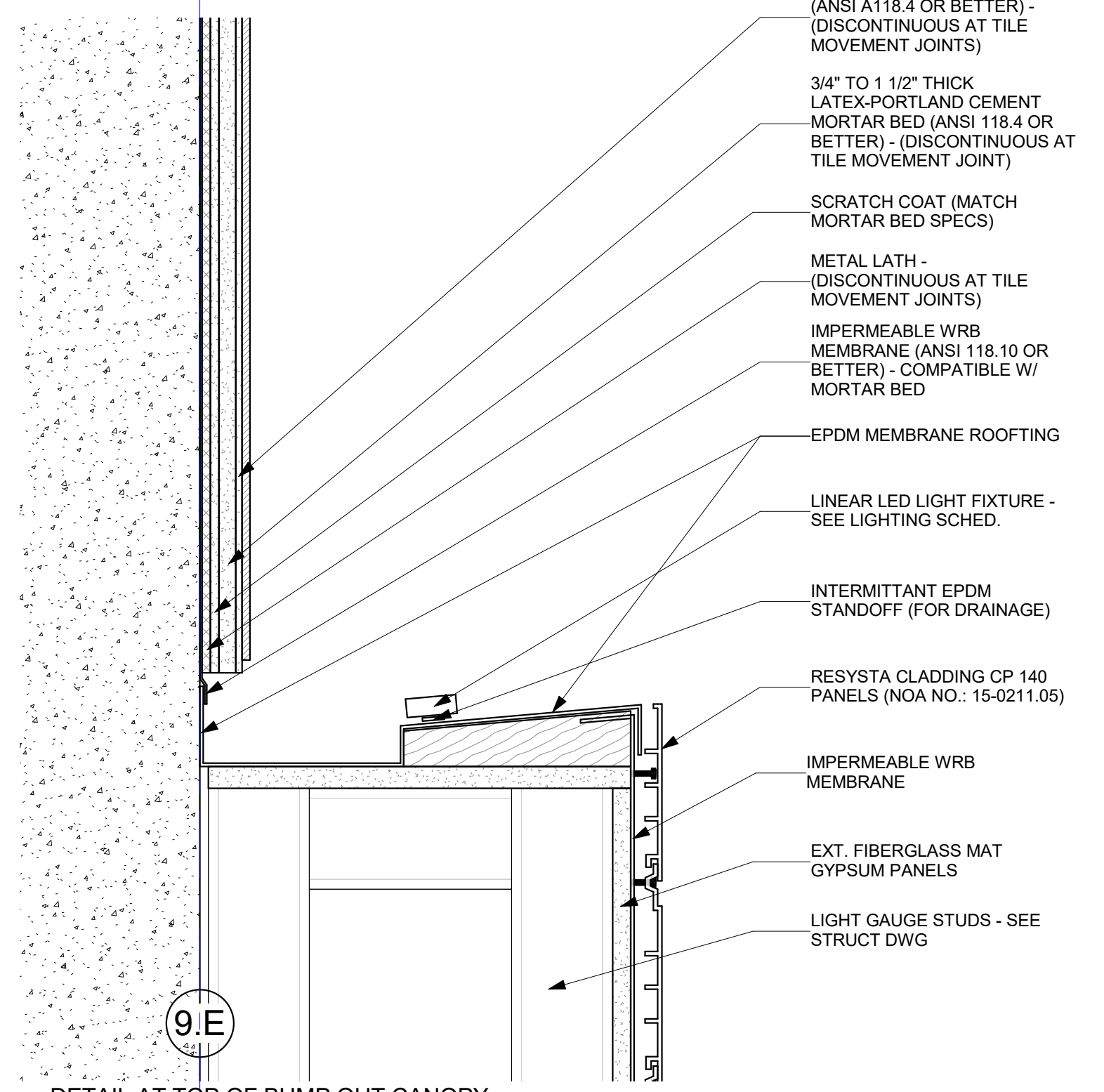


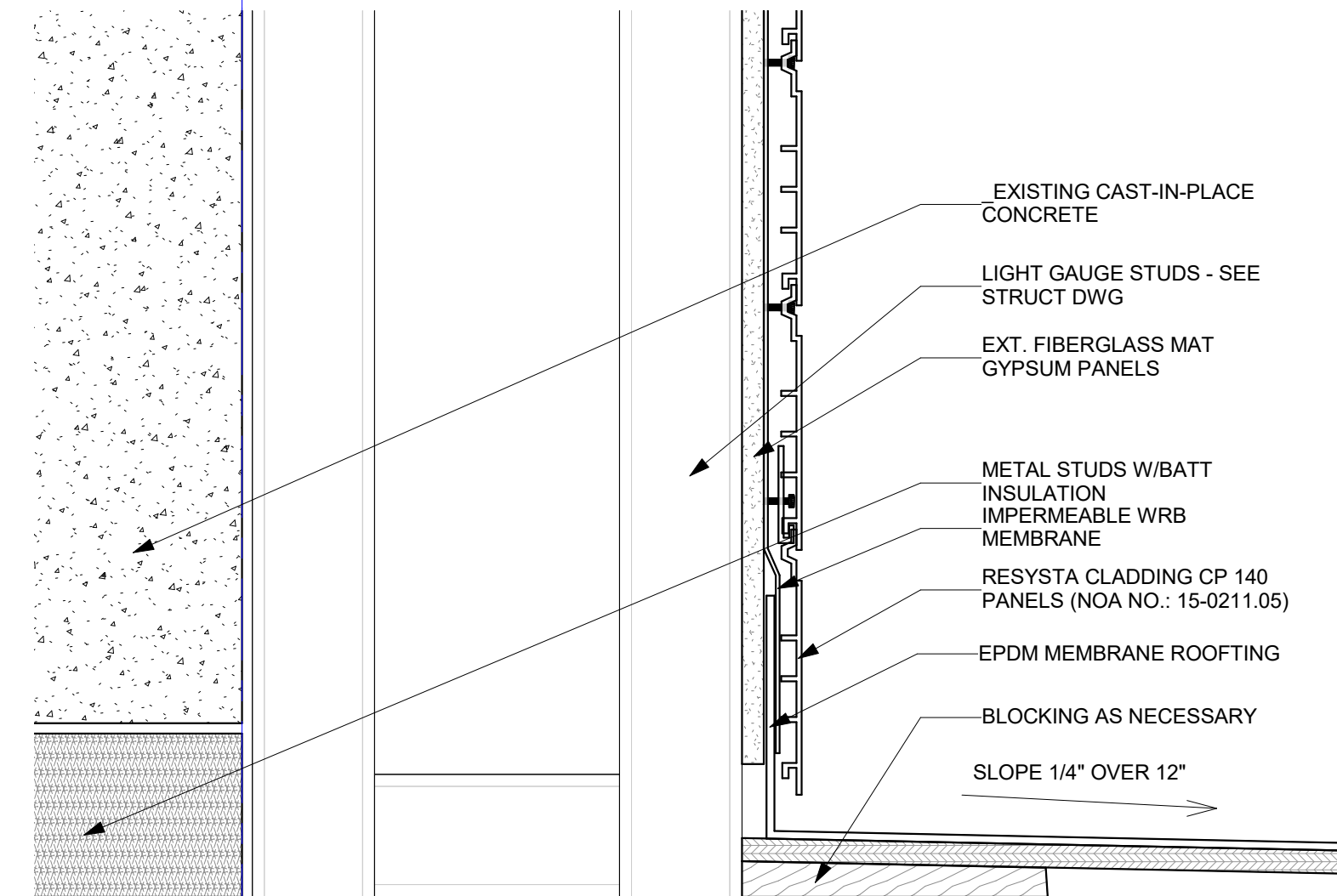
- SHEET METAL COPING
- PRESSURE TREATED WOOD BLOCKING - SIZE AS NECESSARY
- 3X5X1/4" ALUMINUM ANGLE
- (CT-01) PORCELAIN WALL TILE (W/ CEMENTITIOUS GROUT ANSI A118.6 OR BETTER) - (FLEXIBLE SEALANT MOVEMENT JOINTS EVERY 10FT)
- CEMENTITIOUS BOND COAT (ANSI A118.4 OR BETTER) - (DISCONTINUOUS AT TILE MOVEMENT JOINTS)
- 3/4" TO 1 1/2" THICK LATEX-PORTLAND CEMENT MORTAR BED (ANSI 118.4 OR BETTER) - (DISCONTINUOUS AT TILE MOVEMENT JOINT)
- SCRATCH COAT (MATCH MORTAR BED SPECS)
- METAL LATH - (DISCONTINUOUS AT TILE MOVEMENT JOINTS)
- IMPERMEABLE WRB MEMBRANE (ANSI 118.10 OR BETTER) - COMPATIBLE W/ MORTAR BED

5 DETAIL AT PARAPET
3" = 1'-0"



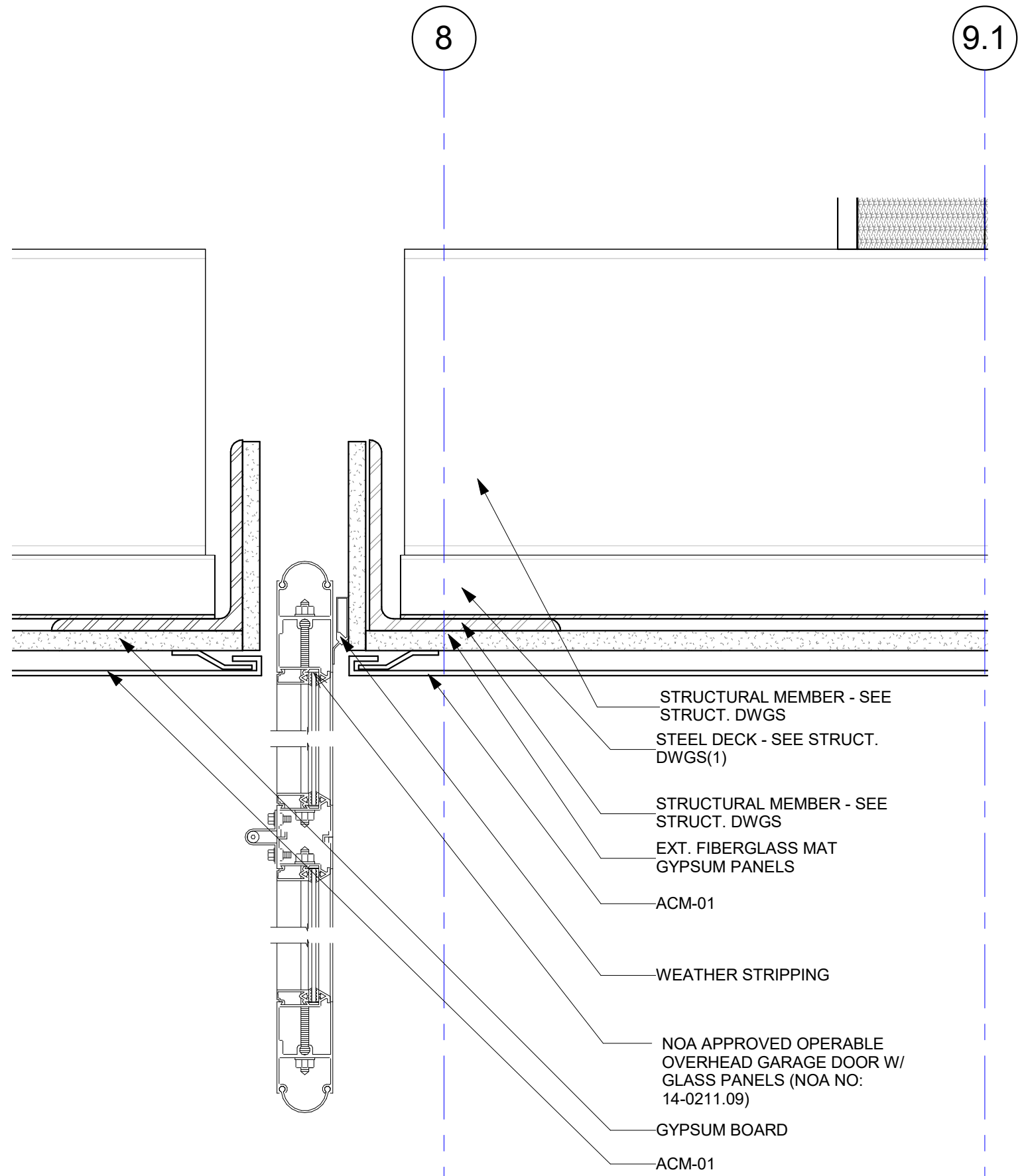
- CEMENTITIOUS BOND COAT (ANSI A118.4 OR BETTER) - (DISCONTINUOUS AT TILE MOVEMENT JOINTS)
- 3/4" TO 1 1/2" THICK LATEX-PORTLAND CEMENT MORTAR BED (ANSI 118.4 OR BETTER) - (DISCONTINUOUS AT TILE MOVEMENT JOINT)
- SCRATCH COAT (MATCH MORTAR BED SPECS)
- METAL LATH - (DISCONTINUOUS AT TILE MOVEMENT JOINTS)
- IMPERMEABLE WRB MEMBRANE (ANSI 118.10 OR BETTER) - COMPATIBLE W/ MORTAR BED
- EPDM MEMBRANE ROOFING
- LINEAR LED LIGHT FIXTURE - SEE LIGHTING SCHED.
- INTERMITTANT EPDM STANDOFF (FOR DRAINAGE)
- RESYSTA CLADDING CP 140 PANELS (NOA NO.: 15-0211.05)
- IMPERMEABLE WRB MEMBRANE
- EXT. FIBERGLASS MAT GYPSUM PANELS
- LIGHT GAUGE STUDS - SEE STRUCT DWG

3 DETAIL AT TOP OF BUMP OUT CANOPY
3" = 1'-0"



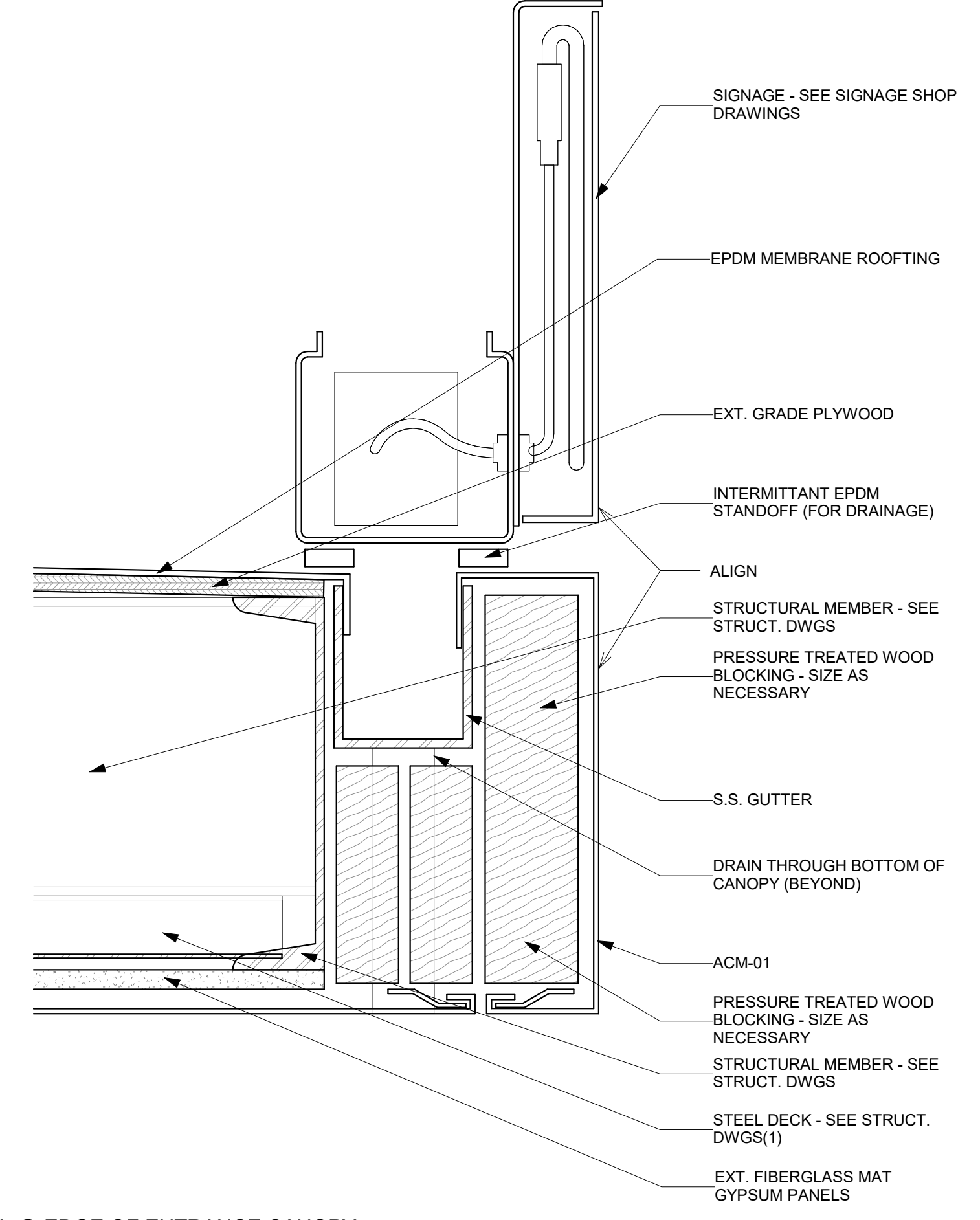
- EXISTING CAST-IN-PLACE CONCRETE
- LIGHT GAUGE STUDS - SEE STRUCT DWG
- EXT. FIBERGLASS MAT GYPSUM PANELS
- METAL STUDS W/BATT INSULATION
- IMPERMEABLE WRB MEMBRANE
- RESYSTA CLADDING CP 140 PANELS (NOA NO.: 15-0211.05)
- EPDM MEMBRANE ROOFING
- BLOCKING AS NECESSARY
- SLOPE 1/4" OVER 12"

2 DETAIL AT CANOPY INTERSECTION
3" = 1'-0"



- STRUCTURAL MEMBER - SEE STRUCT. DWGS
- STEEL DECK - SEE STRUCT. DWGS(1)
- STRUCTURAL MEMBER - SEE STRUCT. DWGS
- EXT. FIBERGLASS MAT GYPSUM PANELS
- ACM-01
- WEATHER STRIPPING
- NOA APPROVED OPERABLE OVERHEAD GARAGE DOOR W/ GLASS PANELS (NOA NO.: 14-0211.09)
- GYPSUM BOARD
- ACM-01

4 DETAIL AT GARAGE DOOR HEAD
3" = 1'-0"



- SIGNAGE - SEE SIGNAGE SHOP DRAWINGS
- EPDM MEMBRANE ROOFING
- EXT. GRADE PLYWOOD
- INTERMITTANT EPDM STANDOFF (FOR DRAINAGE)
- ALIGN
- STRUCTURAL MEMBER - SEE STRUCT. DWGS
- PRESSURE TREATED WOOD BLOCKING - SIZE AS NECESSARY
- S.S. GUTTER
- DRAIN THROUGH BOTTOM OF CANOPY (BEYOND)
- ACM-01
- PRESSURE TREATED WOOD BLOCKING - SIZE AS NECESSARY
- STRUCTURAL MEMBER - SEE STRUCT. DWGS
- STEEL DECK - SEE STRUCT. DWGS(1)
- EXT. FIBERGLASS MAT GYPSUM PANELS

1 DETAIL @ EDGE OF ENTRANCE CANOPY
3" = 1'-0"